

Palm Beach County: Strategic Planning and Performance Management



Moving from Outstanding to Excellent!



SUBSTANCE USE AND BEHAVIOR DISORDERS CROSS-DEPARTMENTAL TEAM

December 15, 2020

STRATEGIC PRIORITY: SUBSTANCE USE AND BEHAVIOR DISORDERS

“Addressing substance use and behavior disorders by providing evidence-based prevention, medication-assisted treatment, and recovery support services.”

John Hulick, Joanna Reid, Jill Singer
Community Services

Regenia Herring
Criminal Justice Commission

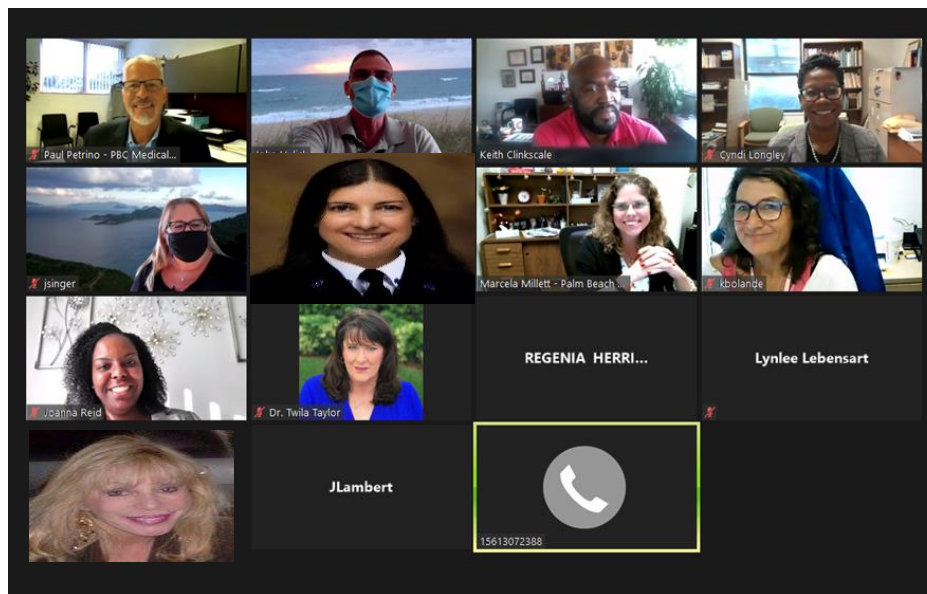
Twila Taylor
Youth Services

Marcy Weiss
Risk Management

Kathy Bolander, Jackie Lambert
Parks & Recreation

Barbara Pinkston
Planning, Zoning & Building

Cross Departmental Team



Lauren Young
Fire Rescue

Cyndi Longley
Cooperative Extension

Vivian Brooks
Office of Community Revitalization

Paul Petrino
Medical Examiner

Brittany Richards
Office of Financial Management and Budget

Lynlee Lebensart
Library System

Primary Sources of the County Budget Allocated to Substance Use and Behavior Disorders

Over \$8.4M have been appropriated for behavioral health and substance use disorders in the past two fiscal years.

● FY20:

- Financially Assisted Agencies (FAA) = \$5,732,391*
- Opioid Response Plan** = \$2,618,751
- TOTAL = \$8,351,142

● FY21:

- Financially Assisted Agencies = \$5,806,415
- Opioid Response Plan** = \$2,623,516
- TOTAL = \$8,430,032

**County FAA
Funding for
Behavioral
Health**

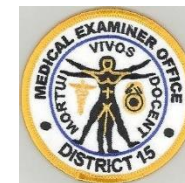
FY17 \$5,481,408

FY18 \$5,773,991

FY19 \$5,732,391*

* FY19 and FY20 were under the same contract cycle. New contract cycle commenced FY21.

** The Opioid Response Plan now encompasses other substances along with opioids.

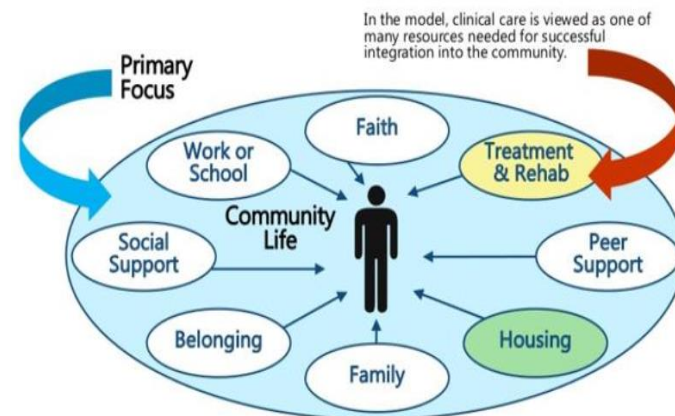


Mission: “Addressing substance use and behavior disorders by providing evidence-based prevention, medication-assisted treatment, and recovery support services.”

- **Goal 1:** Establishing a readily accessible, integrated and coordinated recovery-oriented system of care that is integrated with the County Addiction Stabilization Facility
- **Goal 2:** Promoting best practices and innovative strategies and programming to reduce:
 - drug-related deaths and overdoses
 - crime related to substance use and behavior disorders
 - drug-related infectious diseases and medical complications
- **Goal 3:** Promoting responsible prescription use of opioid pain relievers
- **Goal 4:** Promoting effective substance use and mental health prevention/education programs, sound public policy and commitment to quality, evidence-based addiction and mental health services



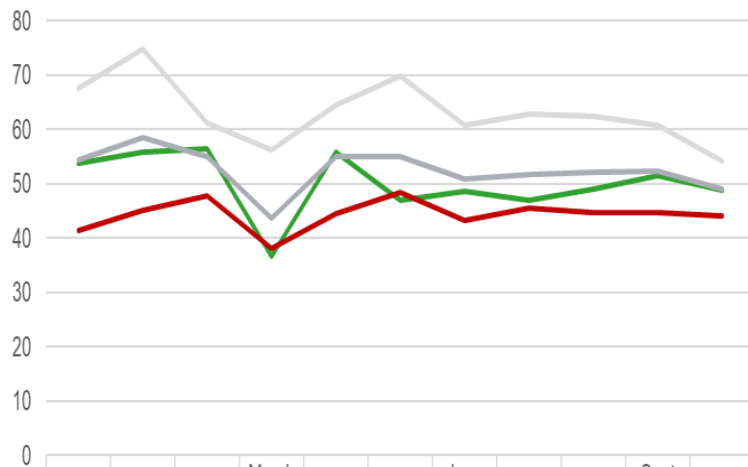
Treating the Whole Person



Goal 1: Establishing a readily accessible, integrated and coordinated recovery-oriented system of care that is integrated with the County Addiction Stabilization Facility



Dec 2019 to Oct 2020 Domain Averages



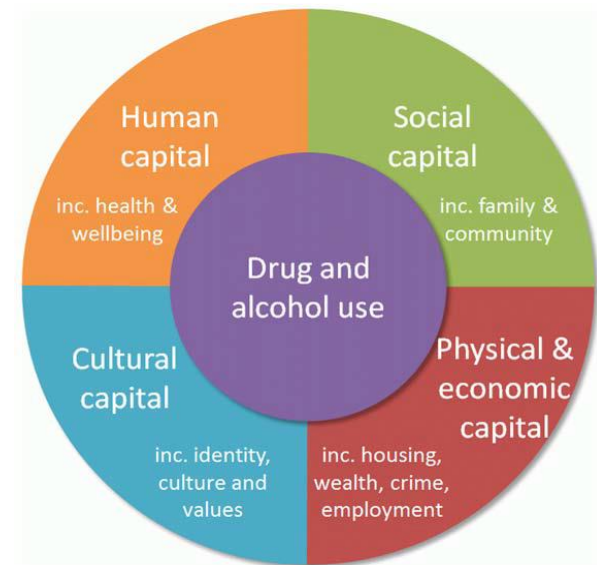
	Dec '19	Jan '20	Feb '20	March '20	April '20	May '20	June '20	July '20	Aug '20	Sept '20	Oct '20
Social Capital	53.8	55.89	56.36	36.57	55.75	46.94	48.55	46.96	49.05	51.48	48.77
Personal Capital	41.46	45.14	47.83	38.19	44.53	48.47	43.21	45.42	44.77	44.79	44.03
Recovery Capital	54.3	58.58	55.1	43.67	54.9	55.08	50.86	51.74	52.06	52.35	48.99
Cultural Capital	67.63	74.72	61.11	56.25	64.42	69.83	60.82	62.85	62.36	60.76	54.17

— Social Capital — Personal Capital — Recovery Capital — Cultural Capital

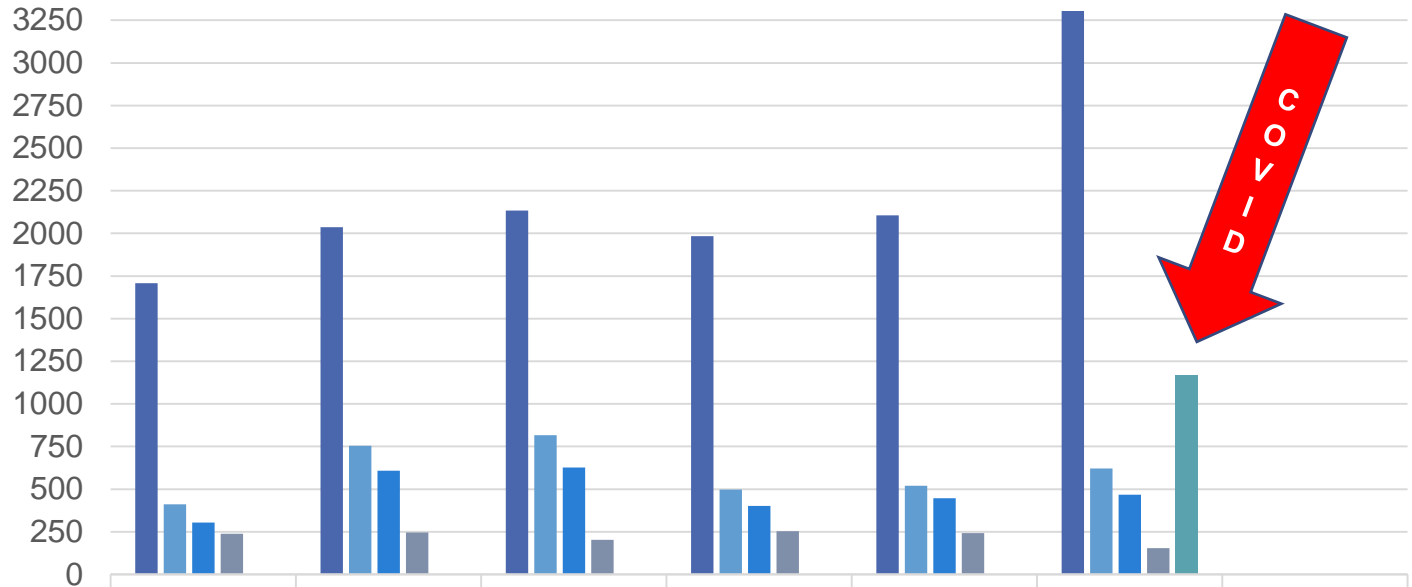
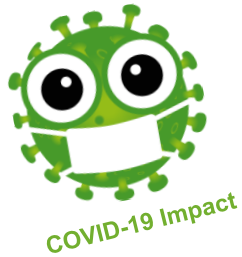
Data Source: D. Whitesock, Founder, Commonly Well and Facilitator for Deployment of the RCI® for PBC


Examples of Recovery-Oriented Activities

	Prevention	Intervention	Treatment	Post-Treatment
Examples Recovery-Oriented Activities	<ul style="list-style-type: none"> • Early screening before onset • Collaborate with other systems, e.g., Child welfare, VA. • Stigma reduction activities • Refer to intervention treatment services 	<ul style="list-style-type: none"> • Screening • Early intervention • Pre-treatment • Recovery support services • Outreach services 	<ul style="list-style-type: none"> • Menu of treatment services • Recovery support services • Alternative services and therapies • Prevention for families and siblings of individuals in treatment 	<ul style="list-style-type: none"> • Continuing care • Recovery support services • Check-ups • Self-monitoring



Goal 2: Promoting best practices and innovative strategies and programming to reduce drug-related deaths & overdoses

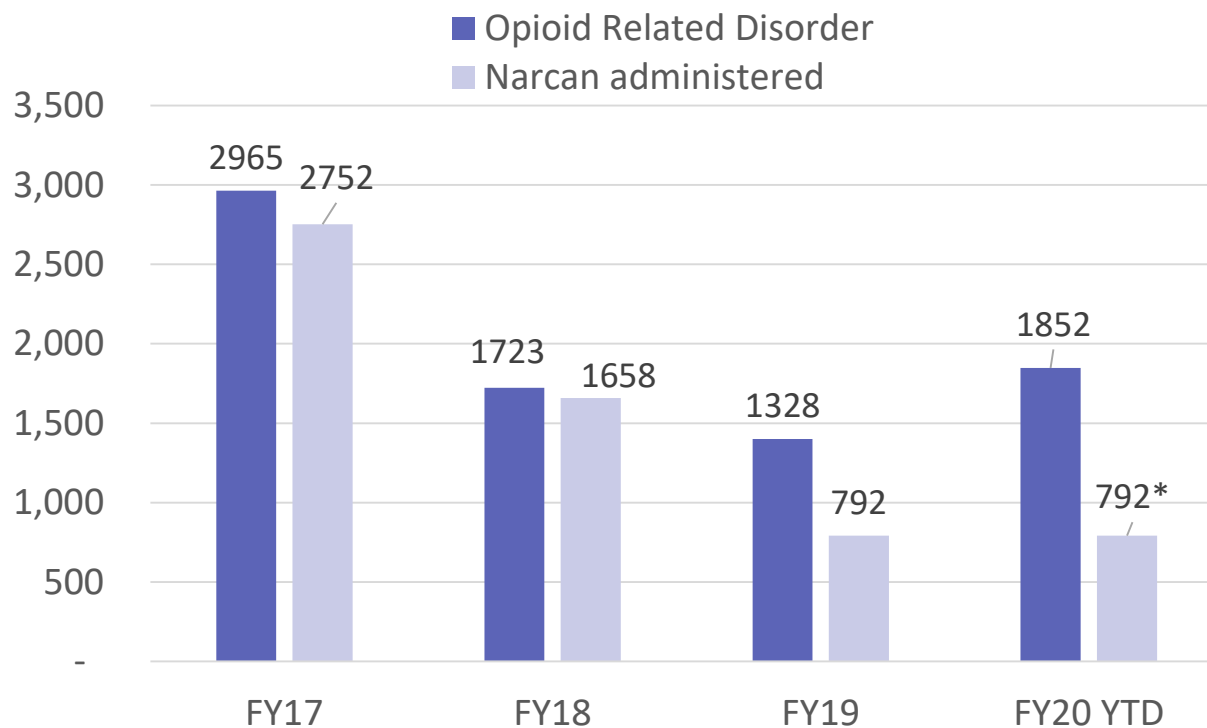


	CY 2015	CY 2016	CY 2017	CY 2018	CY 2019	CY 2020 (11/30)	% Change vs 2019 (YTD)
■ Total Cases	1708	2036	2134	1984	2106	3386	78%
■ Drug Related Deaths	410	754	817	498	519	622	33%
■ Opioid Related Deaths	304	608	626	402	446	468	16%
■ Suicides	238	245	202	254	241	153	-30%
■ COVID-19 Cases 						1170	

Data Source: PBC Medical Examiner's Office

Goal 2: Promoting best practices and innovative strategies and programming to reduce drug-related deaths & overdoses

Number of overdoses and naloxone deployments



Data Source: PBC Fire Rescue

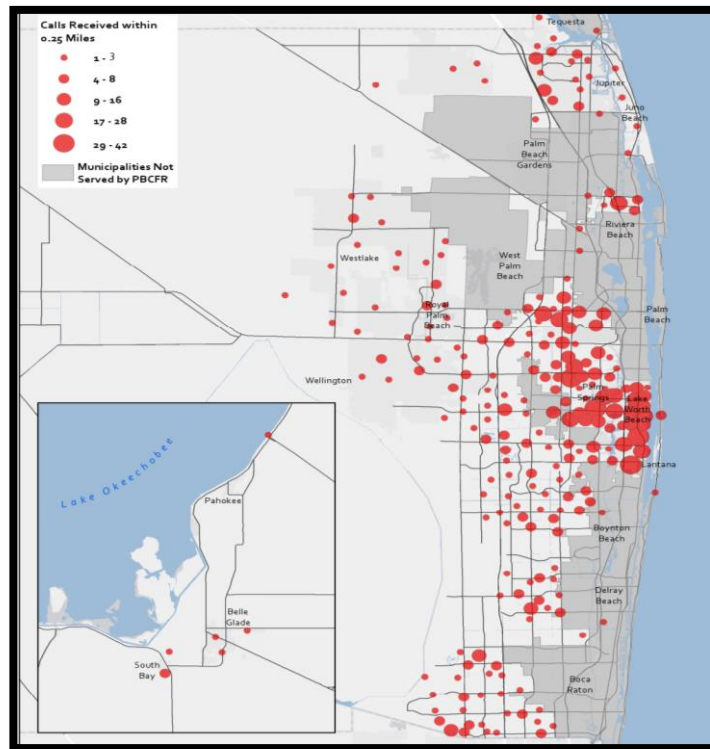


NOTE: EMS Protocols were changed in November 2018 resulting in less usage of Narcan by EMS. * FY20 and FY19 data are coincidentally the same (not an error). In FY20, there were a total of 1116 Narcan deployments, of which 792 were solely for opioid-related overdoses.

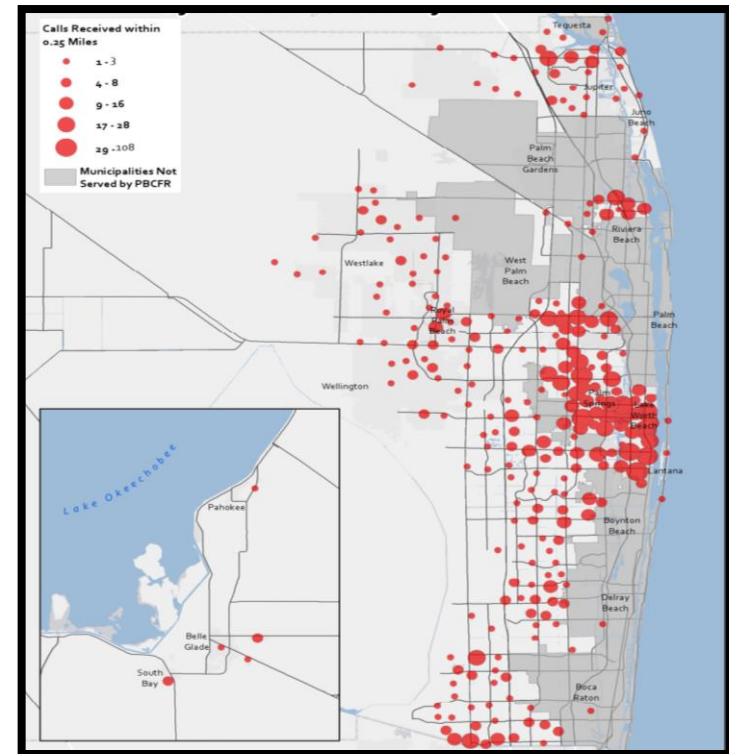
Goal 2: Promoting best practices and innovative strategies and programming to reduce drug-related deaths & overdoses

Opioid-related 911 Calls by Location

2019



2020



Heat maps assist in determining where mitigating efforts and programming should be focused. This particular example illustrates the use of opioids, but these maps are used for all types of substance use disorders to assist in pinpointing intervention needs.

Goal 2: Promoting best practices and innovative strategies and programming to reduce drug-related deaths & overdoses



- Implementing **Syringe Access Program** under the **County Ordinance for the Infectious Disease Elimination Act** and utilizing as a bridge to treatment, recovery support and other social services for Intravenous Drug Users (IDUs)
- Received responses to FY 2019 FAA's Notice of Funding Opportunity (NOFO) and are working with SEFBHN as the lead entity
- Opened two **(2) Recovery Community Organizations** and two **(2) Recovery Community Centers**
- Continuing to monitor monthly, quarterly, and annual metrics for program success
- On-going tracking of clients served by the County's **Ryan White Program** (*3,744 clients in calendar year 2019*)



Goal 2: Promoting best practices and innovative strategies and programming to reduce drug-related deaths & overdoses

PBC Fire Rescue Mobile Integrated Health Addiction Program

Vision: To save lives and help connect patients to ethical Medically Assisted Treatment providers, risk reduction programs, along with mental health and substance/alcohol use disorder education and resources.

Data over the past 3.5 years of this program consistently shows a **75-78% rate of acceptance** of the provision of resources via the telehealth contact with the patient.

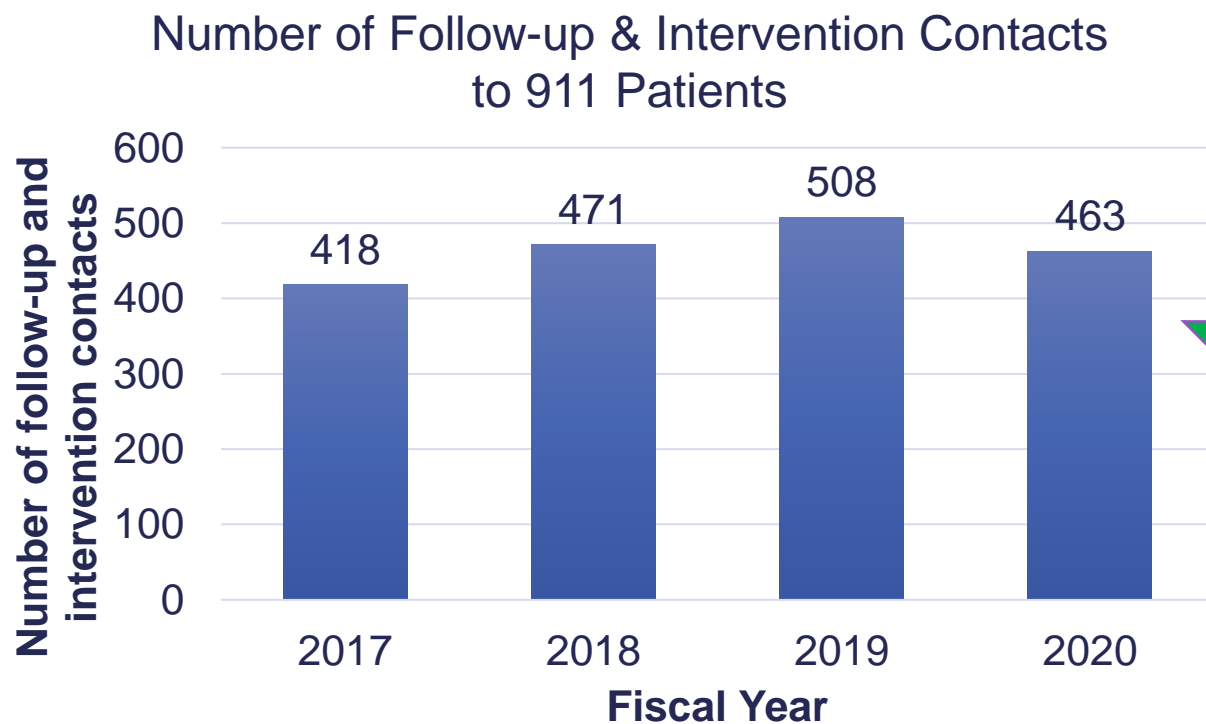


The multidisciplinary MIH team manages the Addiction Program, and is staffed by PBCFR Community Paramedics and Clinical Social Workers.



Goal 2: Promoting best practices and innovative strategies and programming to reduce drug-related deaths & overdoses

Fire Rescue Addiction Telehealth Program Outcomes



Data Source: PBC Fire Rescue

Year-to-Year Reduction in EMS Use by Participants

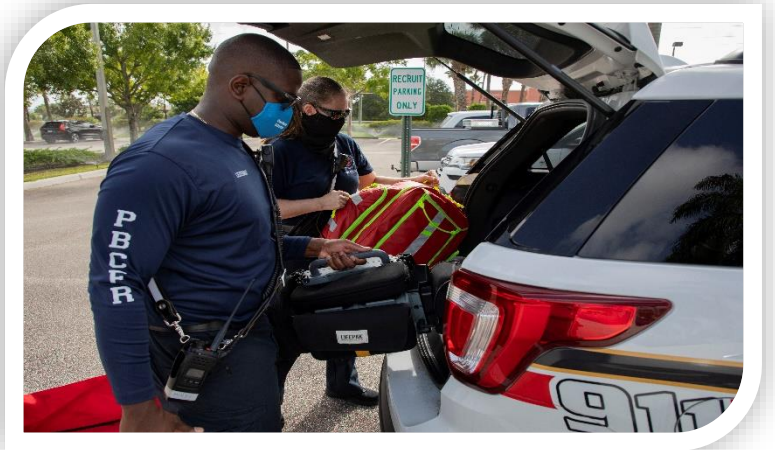
48% 2017
45% 2018
45% 2019
TBD-2020

Goal 2: Promoting best practices and innovative strategies and programming to reduce drug-related deaths & overdoses

PBC Fire Rescue & JFK North Addiction Stabilization Unit

Goal: To ensure patients get to specialized emergency care for their substance/alcohol use disorder, and are able to connect to Medication Assisted Treatment if they are open to it.

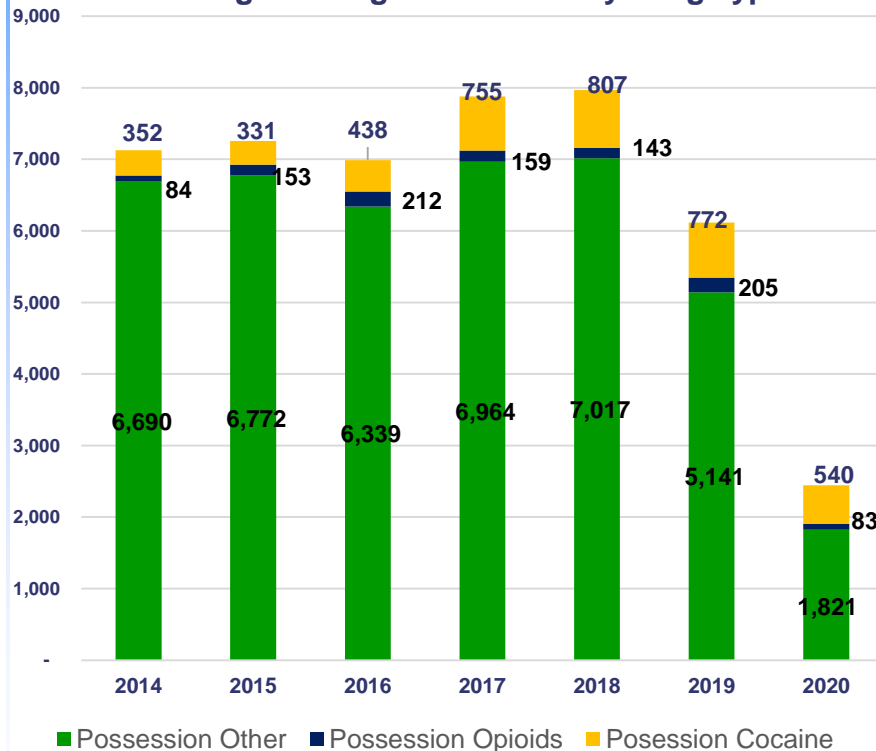
Patients presenting without insurance are able to be immediately transitioned to the Health Care District for enrollment in their addiction, medical, mental health, and/or dental programs.



Goal 2: Promoting best practices and innovative strategies and programming to reduce drug-related deaths & overdoses

Crimes related to substance use and behavior disorders

Case Filing for Drug Possession by Drug Type



Note: "Possession Other" includes marijuana, amphetamines, synthetic narcotics, hallucinogens, barbiturates, and others. Year 2020 includes January 1, 2020 to September 30, 2020.

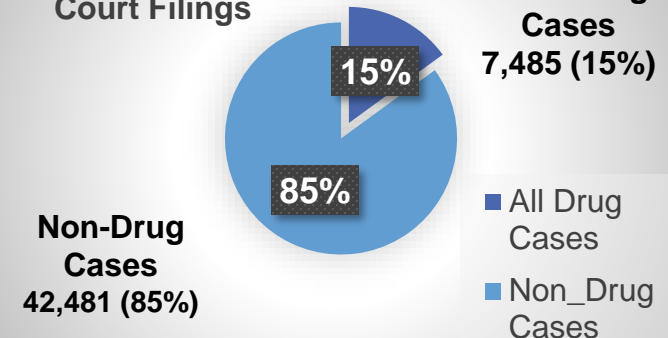
Note: All drug cases here include sales, trafficking, etc. for a total greater than just possession cases of 6,118 depicted in the adjacent chart.

DUI Court Case Filings



Note: Year 2020 includes January 1, 2020 to September 30, 2020.
 Data Source: Date of Query, 30-OCT-2020, CaseView. SPSS.

2019 Percent of Court Filings



Goal 2: Promoting best practices and innovative strategies and programming to reduce drug-related deaths & overdoses

Behavioral Health Intersecting with the Criminal Justice System

STRATEGIES:

- Advance the **Cross-Systems Mapping:**
 - Assist in transforming fragmented systems
 - Identify gaps and resources
 - Implement priority areas, and
 - Identify where to begin or coordinate existing interventions
- Develop a **Cross-Systems Action Plan** around top priorities.
- Implement promising alternative programs, such as **PalmFUSE**, as successful options.



Goal 2: Promoting best practices and innovative strategies and programming to reduce drug-related deaths & overdoses

Behavioral Health Intersecting with the Criminal Justice System

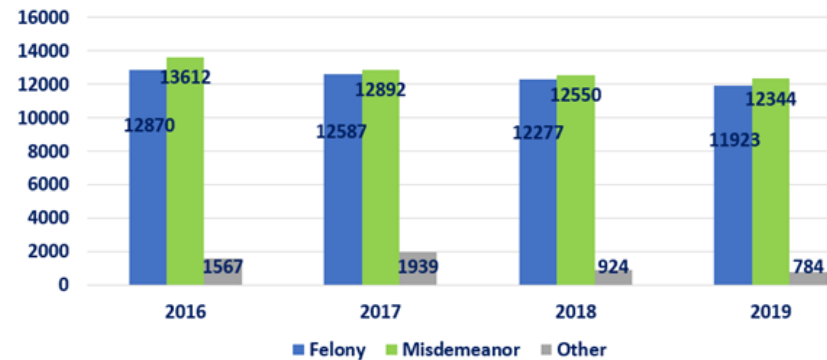
PalmFUSE Pilot (example)



Bookings		Total Jail Bed Days	
Pre-FUSE	Post-FUSE	Pre-FUSE	Post-FUSE
64	0	702	0

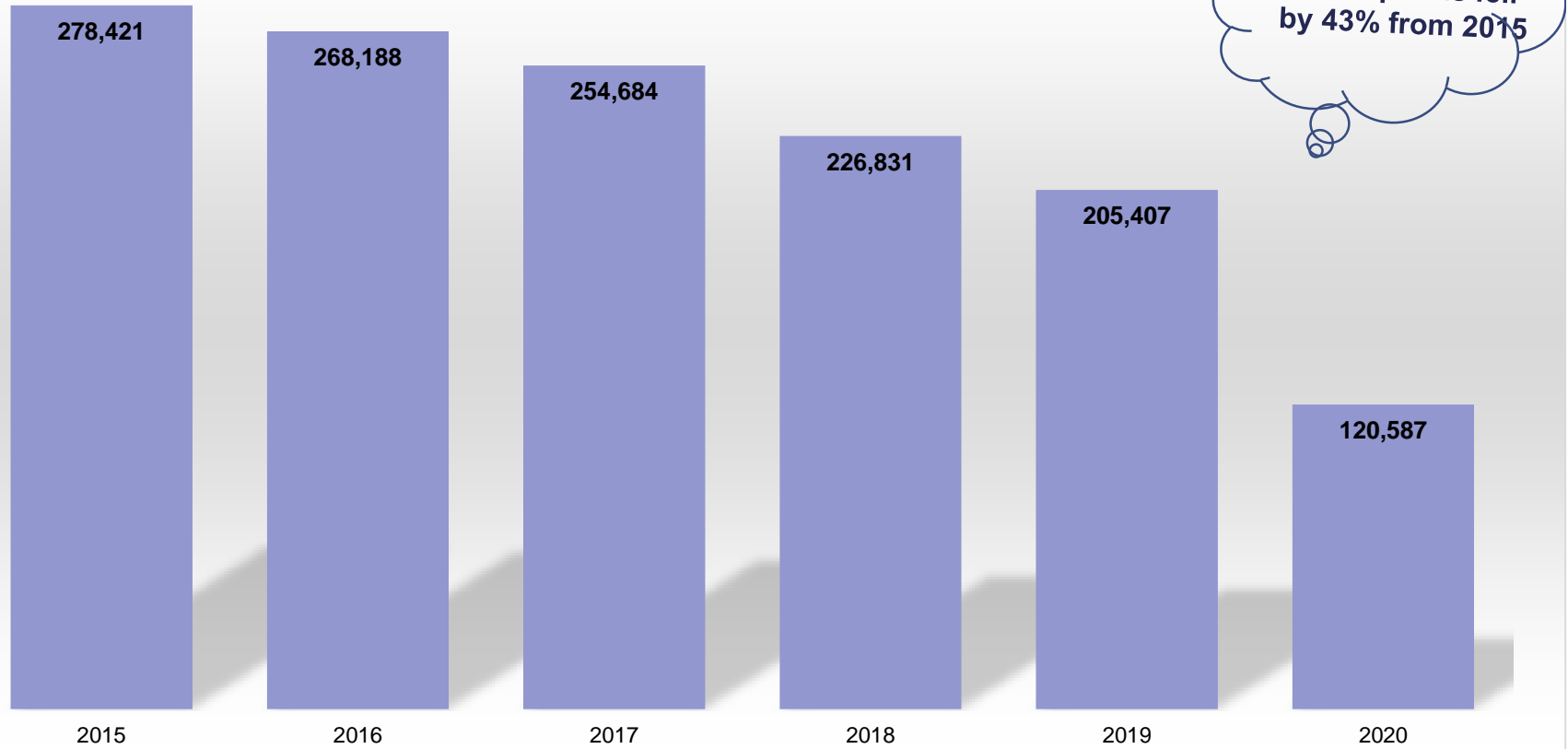
Pretrial Jail Admissions (Bookings) by Felony and Misdemeanor

● Total Admissions by Calendar Month and Year



Goal 3: Promoting responsible prescription use of opioid pain relievers

Unique Opioid Prescriptions



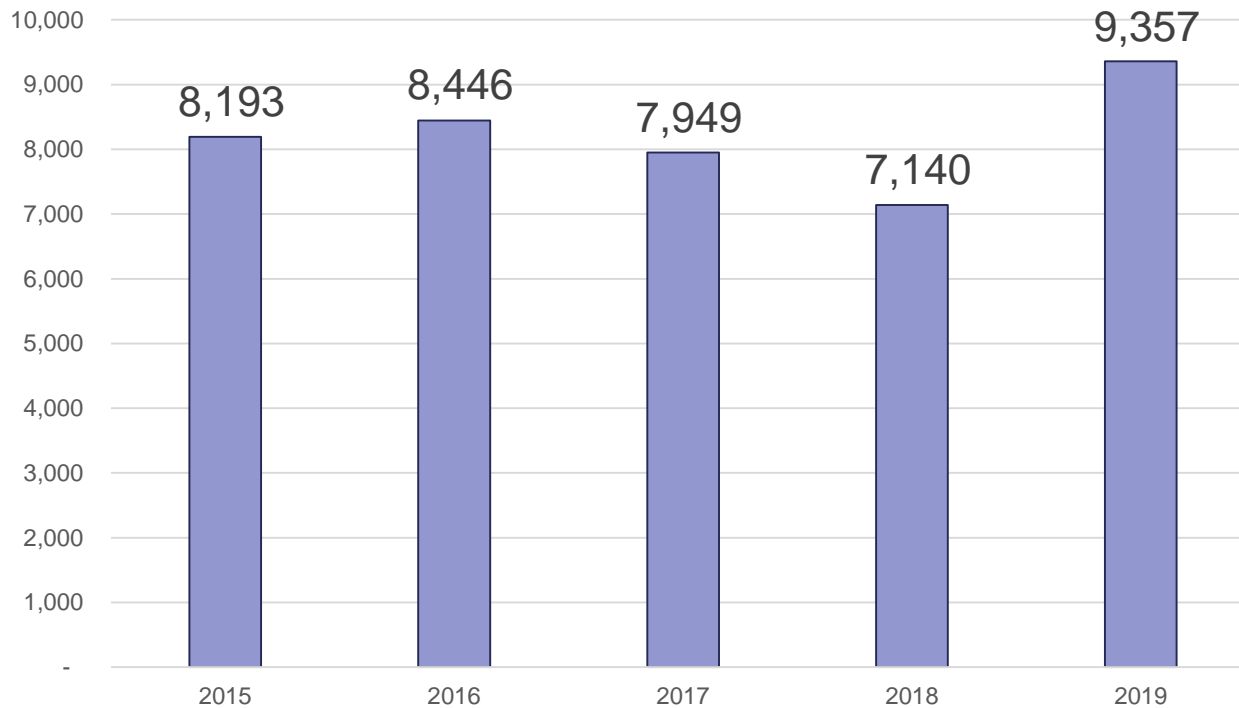
Data Source: Florida Department of Health, Bureau of Community Health Assessment, Division of Public Health Statistics and Performance Management (Opioid Use Dashboard – Palm Beach County) (2020)

Goal 3: Promoting responsible prescription use of opioid pain relievers

Amount of prescription drugs disposed through County pill drop program

32% increase
FY 18 to FY 19

Number of Pounds of Pills

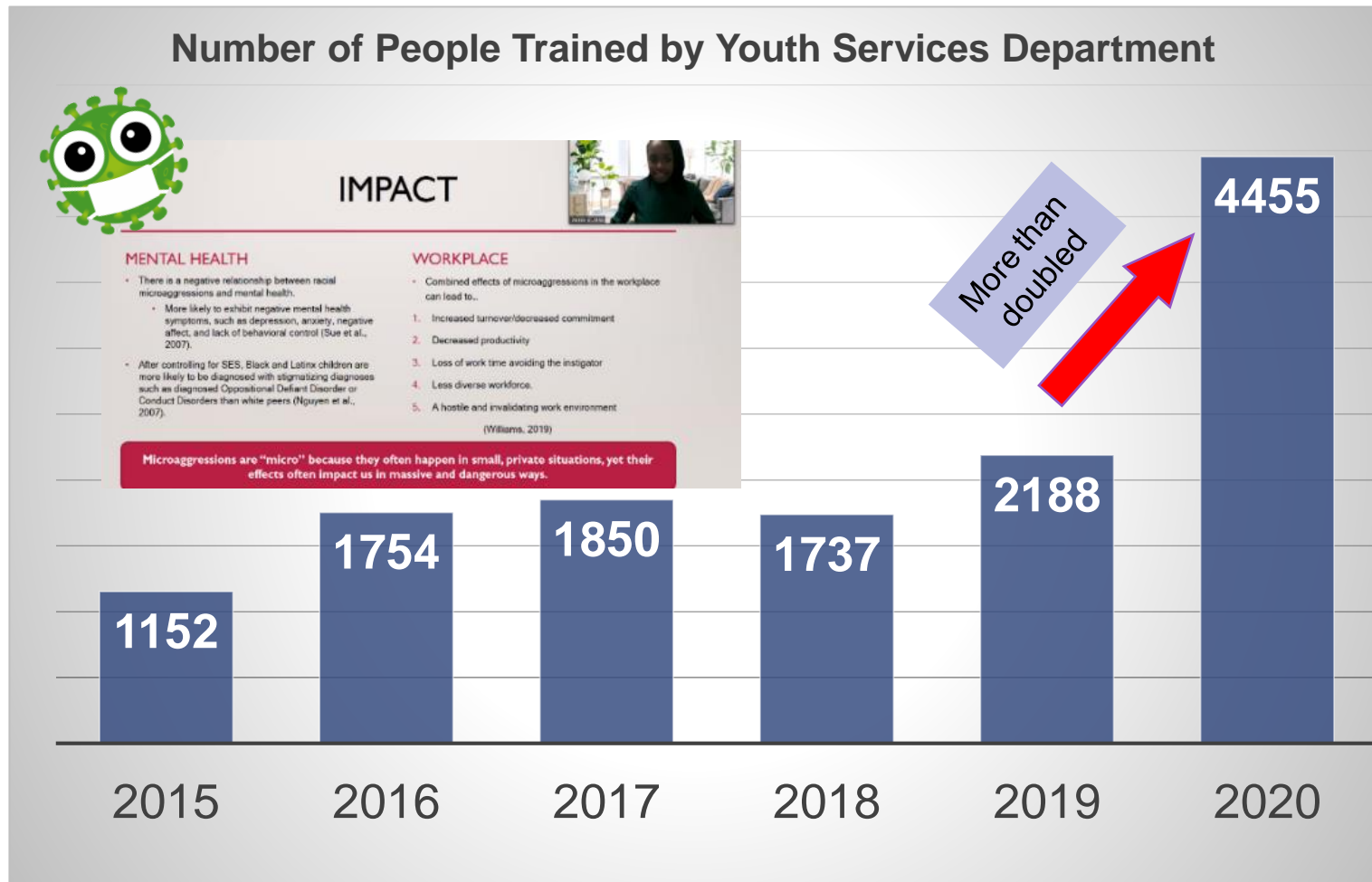


Data Source: PBC Sheriff's Office

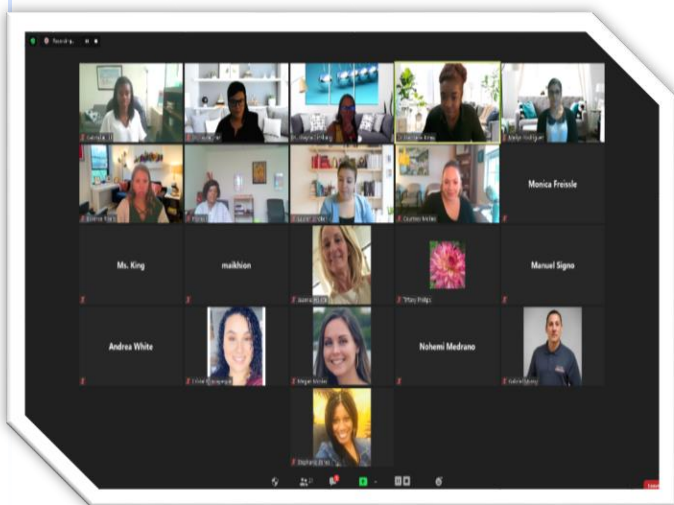
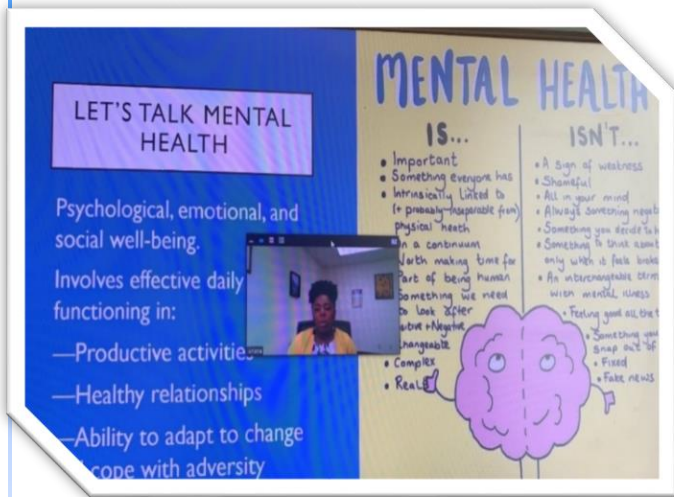


Goal 4: Promoting effective substance use and mental health prevention and education programs, sound public policy, and commitment to quality, evidence-based addiction and mental health services

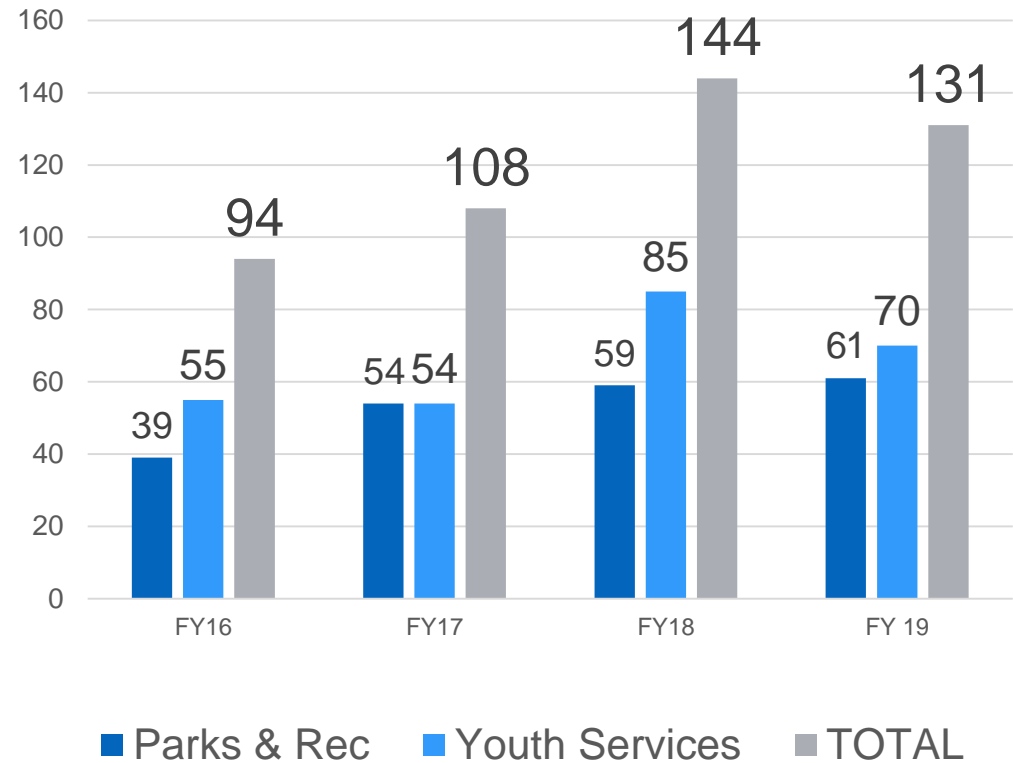
Impact of Education and Training per Fiscal Year



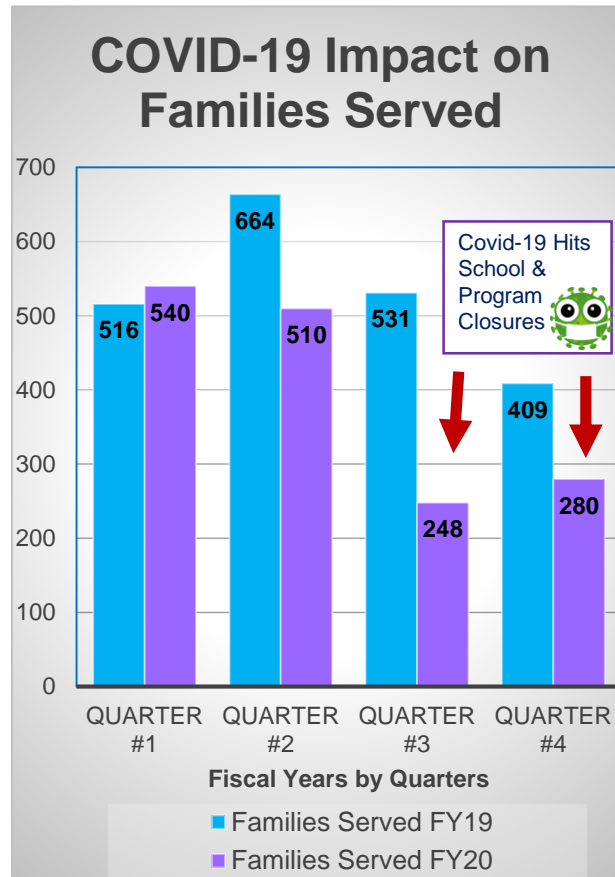
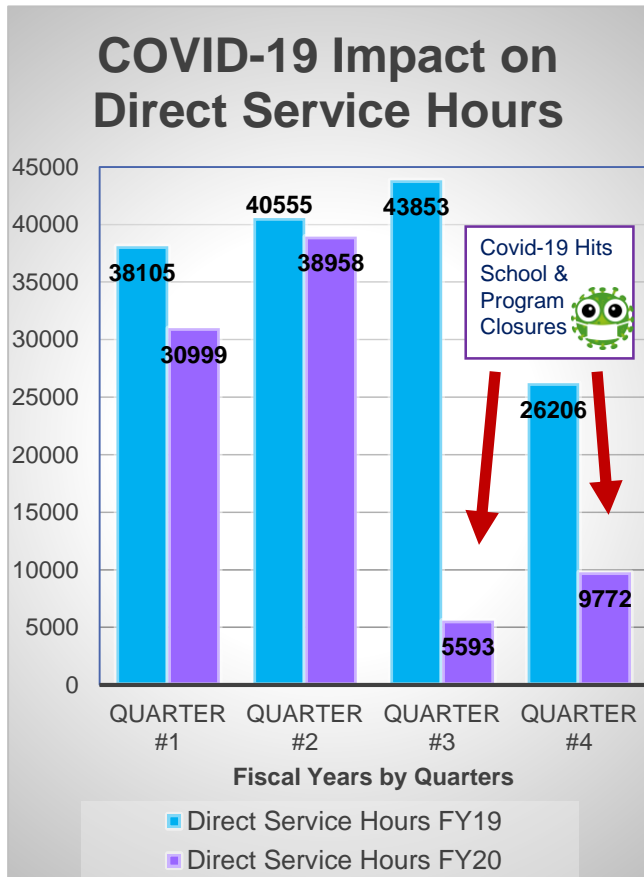
Goal 4: Promoting effective substance use and mental health prevention and education programs, sound public policy, and commitment to quality, evidence-based addiction and mental health services



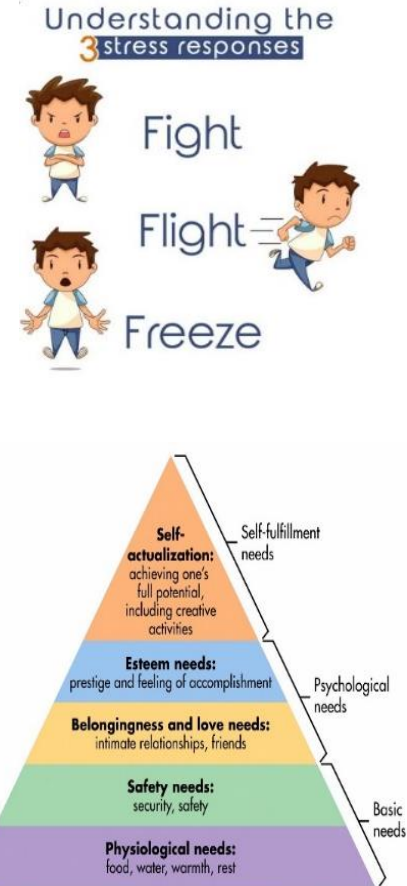
Outreach Classes Related to Substance Use and Mental Health



Goal 4: Promoting effective substance use and mental health prevention and education programs, sound public policy, and commitment to quality, evidence-based addiction and mental health services



Data Source: YSD



Goal 4: Promoting effective substance use and mental health prevention and education programs, sound public policy, and commitment to quality, evidence-based addiction and mental health services

COVID Impact and Innovations by Youth Services, Parks & Recreation and the Employee Assistance Program



- 442 virtual recreational activities, videos and creative check-in e-mails

➤ Mindfulness Meditation Workshop



- Development of 137 nature center virtual recreation, meditation, yoga, exercise, and educational videos



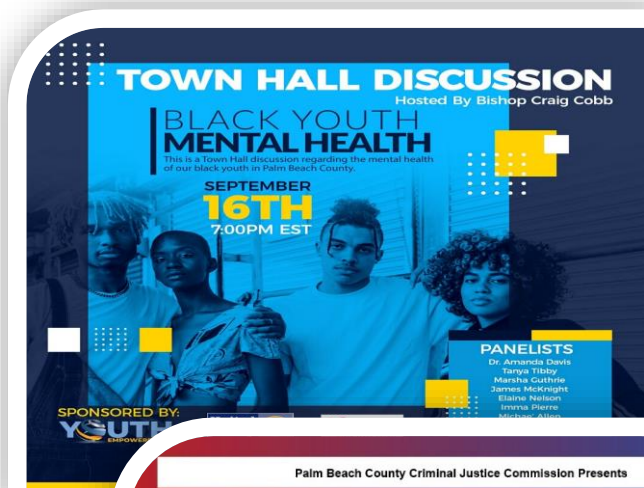
Goal 4: Promoting effective substance use and mental health prevention and education programs, sound public policy, and commitment to quality, evidence-based addiction and mental health services



Creating meaning out of chaos

Creating a positive state of mind and safe outlets to process social unrest and racial injustice

Juneteenth, Drum Circles, and Black Heroes



Listening to the community's concerns and addressing social unrest as it impacts mental health and equity.

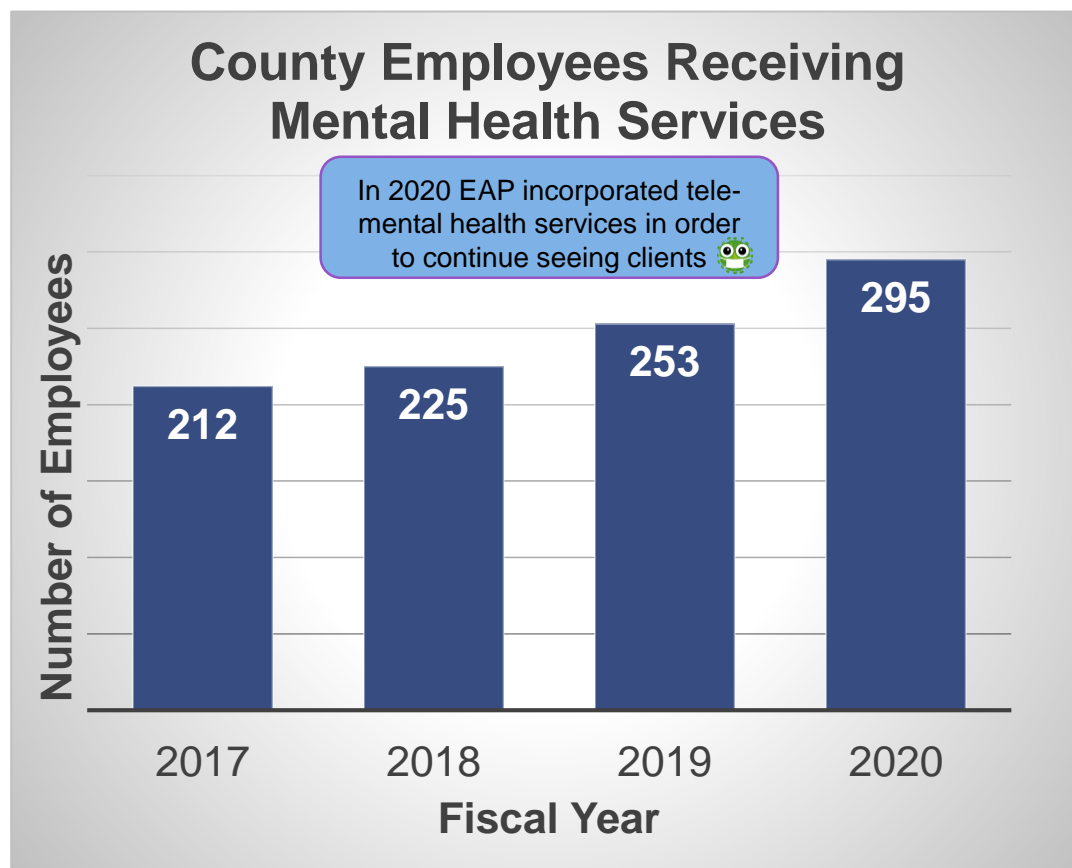


Goal 4: Promoting effective substance use and mental health prevention and education programs, sound public policy, and commitment to quality, evidence-based addiction and mental health services



Creating meaning out of chaos

COVID Impact and Innovations Continued



59% from increase in new clients...we're here for you!



County EAP Comparison in relation to COVID-19 (2019 vs. 2020)

3/2019 to 10/2019 → 41 new clients
3/2020 to 10/2020 → 65 new clients



Next Steps

- Implement neutral care coordination
- Ensure coordination of efforts across organizations
- Better utilize data to identify where to target services
- Continue to identify roles and responsibilities of each department
- Work to build better data on costs, drug usage other than opioids, and infectious diseases
- Evaluate effectiveness of: Interventions, Education, and Prevention Activities



- Continue to broaden the reach of peer support services across the continuum
- Continue to support the PBC Healthcare District's efforts to have the ASF serve as the central point of intake/triage center for all overdose cases.
- Develop methods to leverage interdepartmental resources
- Broaden the scope of the team to adopt:
 - A trauma informed approach
 - Address impact of ACEs and community trauma
 - Build resiliency & overcome adversity

Questions and Answers



Backup and Additional Information



County Services and Programs Offered Related to Substance Use and Behavior Disorders

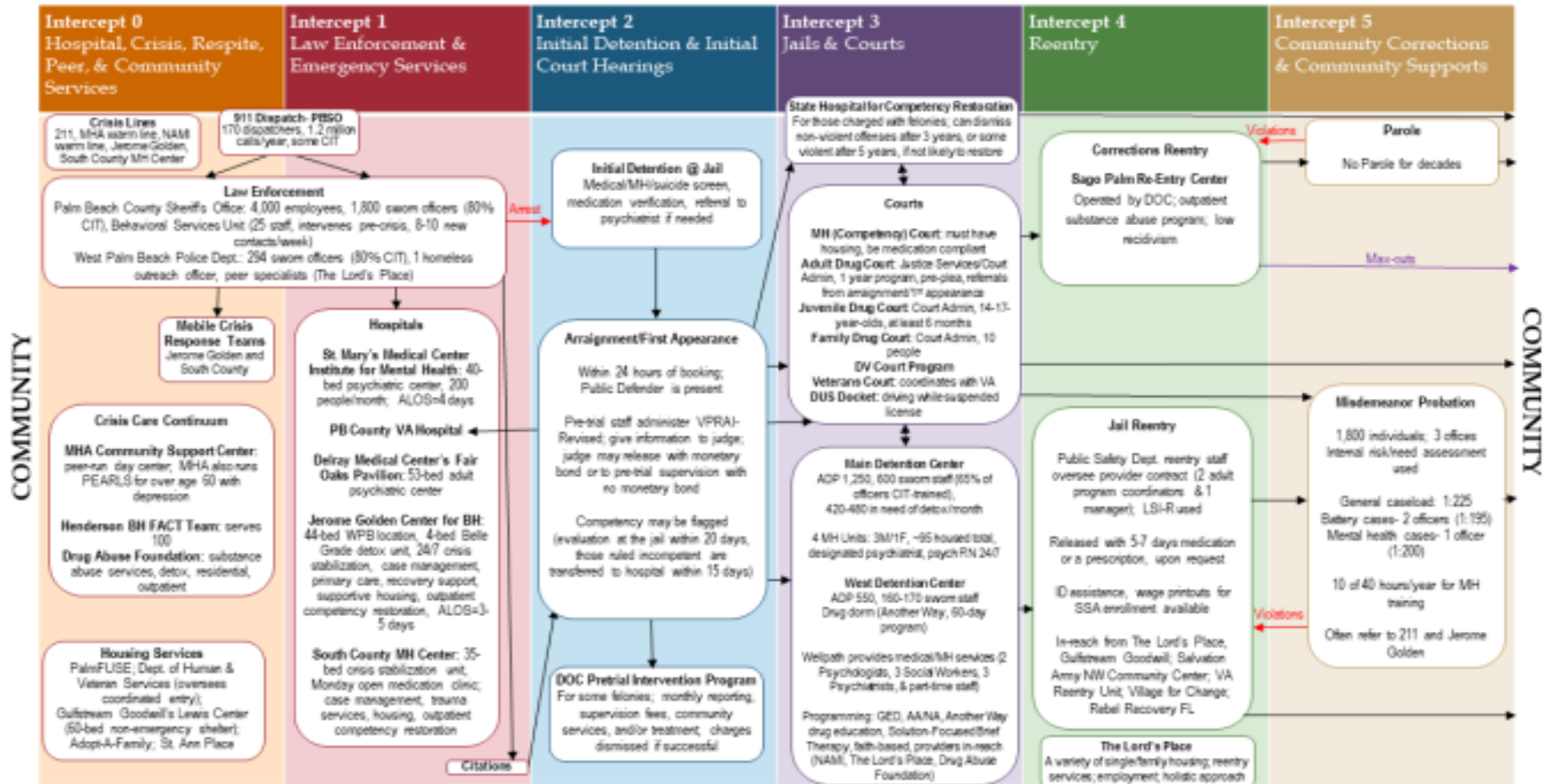
(This list is a sample and not comprehensive)

- Financially Assisted Agency funding
- Substance Use and Behavior Disorder Strategic Plan
 - Steering Committee
 - Increased treatment capacity resources
 - Countywide coordinated planning
- Fire Rescue Mobile Integrated Health Programs
- Fire Rescue Addiction Program (education and referrals)
- Education and prevention classes
- Family, residential, youth and marriage counseling
- Drug Court for juveniles and adults
- Ex-offender Reentry for juveniles and adults from prison and jail
- Family Violence Intervention Program
- Youth Empowerment Centers
- Summer Camps and Summer Food Service Program
- My Brother's Keeper
- Victim Services
- Parks for Rx Program
- County Employee Assistance Program
- Ryan White Program
- Homeless Resource Centers and wrap-around-services
- Outdoor activities in natural areas, sports, and culture
- Senior and Veteran services
- Palm FUSE



Backup and Additional Information

SEQUENTIAL INTERCEPT MODEL MAP FOR PALM BEACH COUNTY, FL



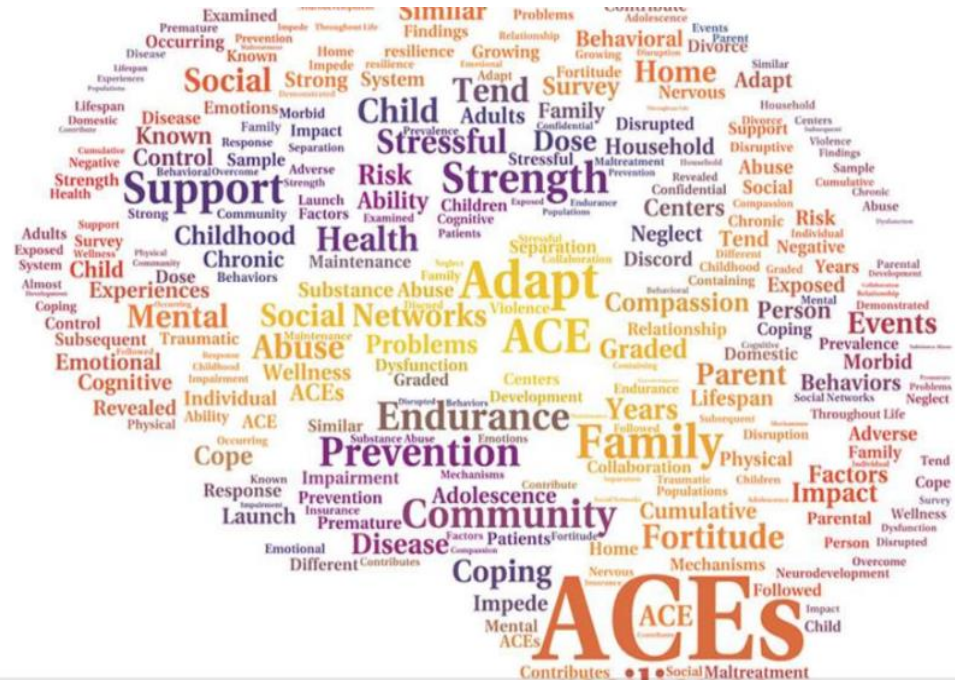
Backup and Additional Information

ACE Resources

Academy on Violence and Abuse
CDC-Kaiser Permanente ACE
Study Preview
shorturl.at/kwCF0

The Lifetime Effects of Adverse
Childhood Experiences
Dr. Nadine Burke Harris
shorturl.at/bxAO8

ACE questionnaire
shorturl.at/cmtQW



For the full report and supporting materials
visit: <https://osg.ca.gov/sg-report/>.