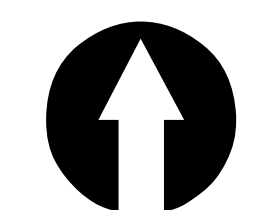
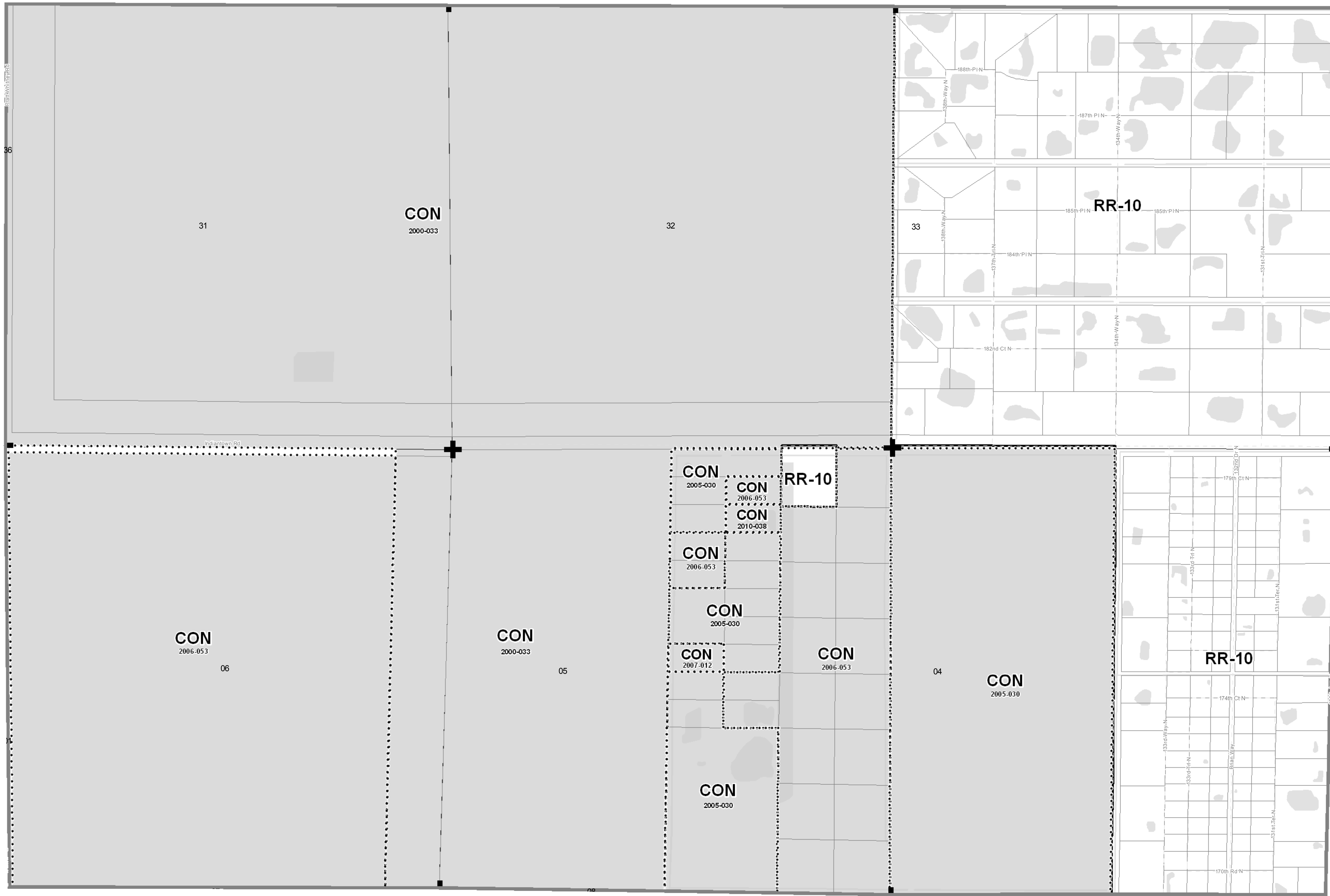


Amendment Table

Amendment ID	Ordinance Number	Adoption Date
00-3 CON 1	2000-033	9/18/2000
2005-00029	2005-030	8/22/2005
LGA 2006-00027	2006-053	11/13/2006
LGA 2007-0007a	2007-012	8/27/2007
LGA 2010-015c	2010-038	8/30/2010

Note: Each site on this map referenced with an Ordinance Number has been subject to a site specific Future Land Use Atlas amendment adopted by the Board of County Commissioners. Please reference the applicable ordinance for conditions of approval that may limit the development to a certain size, use or intensity at the Planning Division and on this webpage: www.pbcgov.com/pzb/planning/ordinances



1 inch = 600 feet
0 600 1,200 Feet

This map is a representation of the official copy of the map on file with Palm Beach County Planning Division.

Future Land Use Atlas of Palm Beach County, Florida

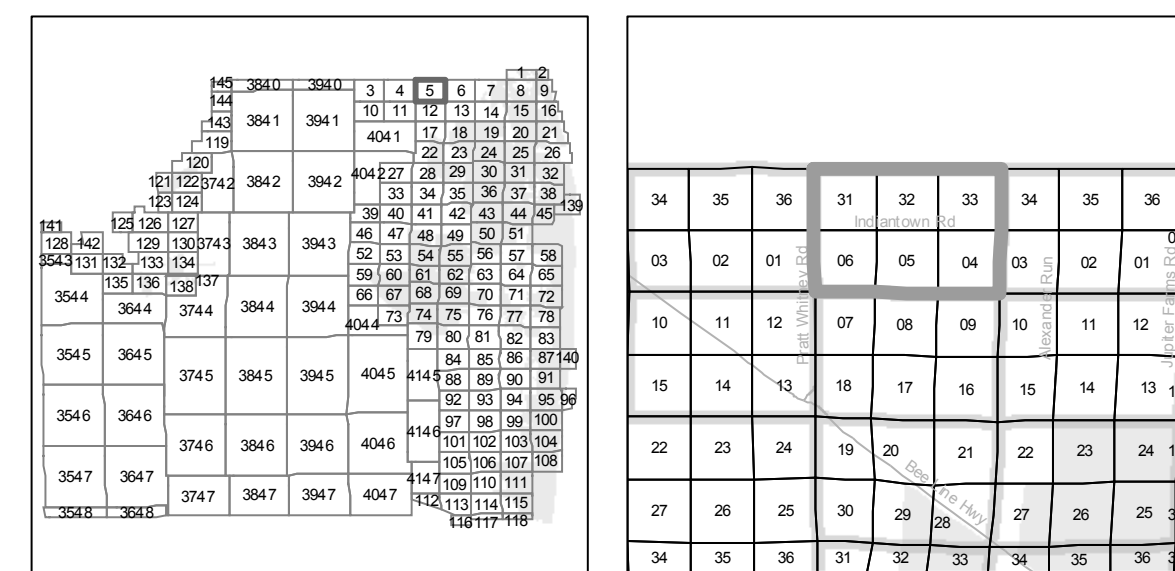
ATLAS PAGE 5

Last Printed On:
Jan 04, 2011

- Future Land Use
- FLU Atlas Page
- Amendments
- Parcels
- Municipality
- Water



Palm Beach County
Planning, Zoning and Building Department



ATLAS PAGE 4

ATLAS PAGE 12

ATLAS PAGE 11