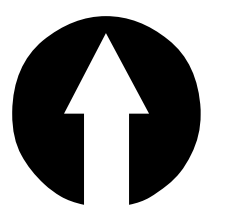
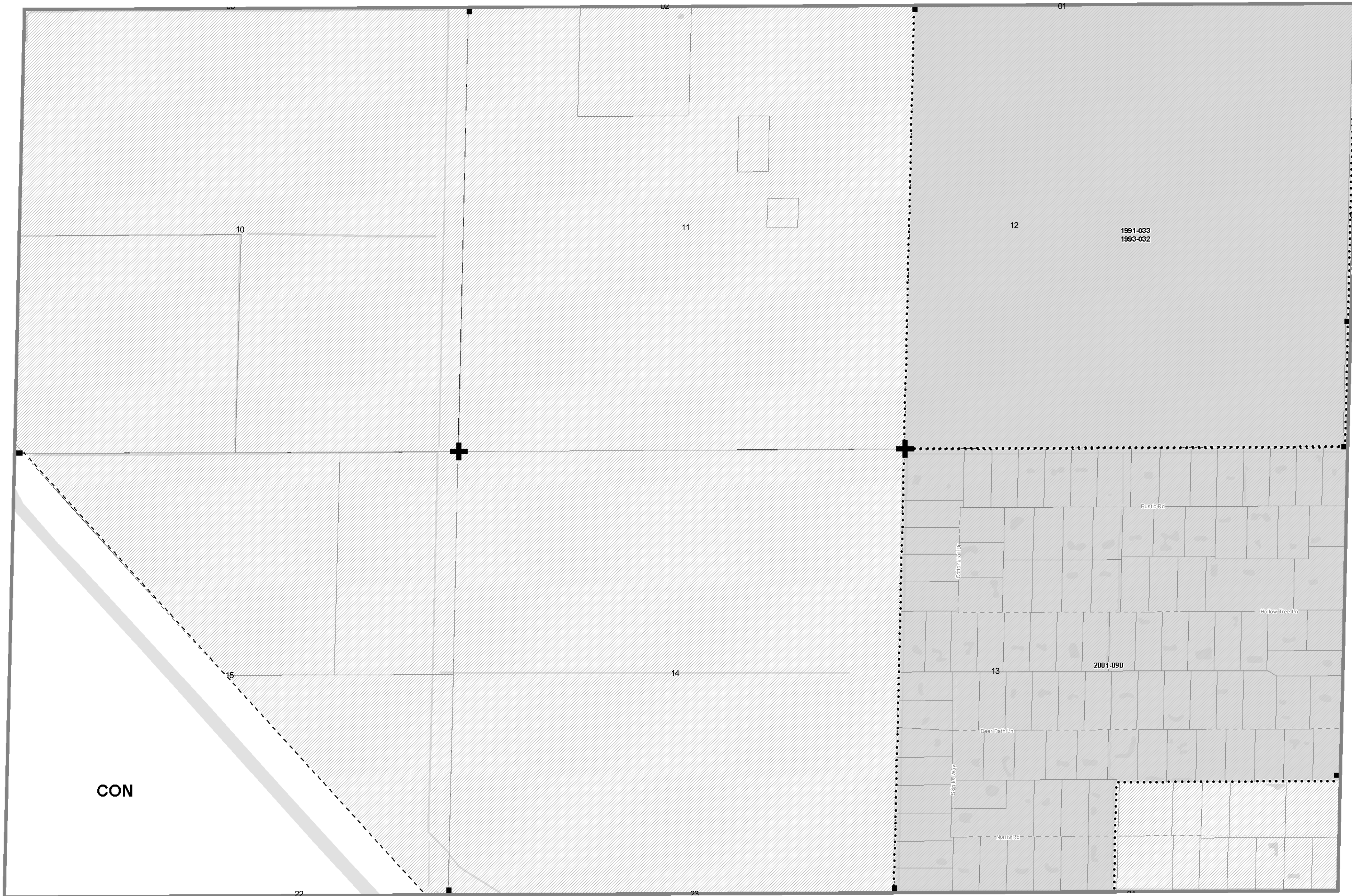


Amendment Table

Amendment ID	Ordinance Number	Adoption Date
91D-60, 67 TND 1	1993-032	12/20/1993
01-67 RR 1	2001-090	12/5/2001
91D-60, 67 TND 1	1991-033	<Null>

Note: Each site on this map referenced with an Ordinance Number has been subject to a site specific Future Land Use Atlas amendment adopted by the Board of County Commissioners. Please reference the applicable ordinance for conditions of approval that may limit the development to a certain size, use or intensity at the Planning Division and on this webpage: www.pbcgov.com/pzb/planning/ordinances



1 inch = 600 feet



This map is a representation of the official copy of the map on file with Palm Beach County Planning Division.

Future Land Use Atlas of Palm Beach County, Florida

ATLAS PAGE 67

Last Printed On:
Dec 04, 2009

- Future Land Use
- FLU Atlas Page
- Amendments
- Parcels
- Municipality
- Water



Palm Beach County
Planning, Zoning and Building Department

