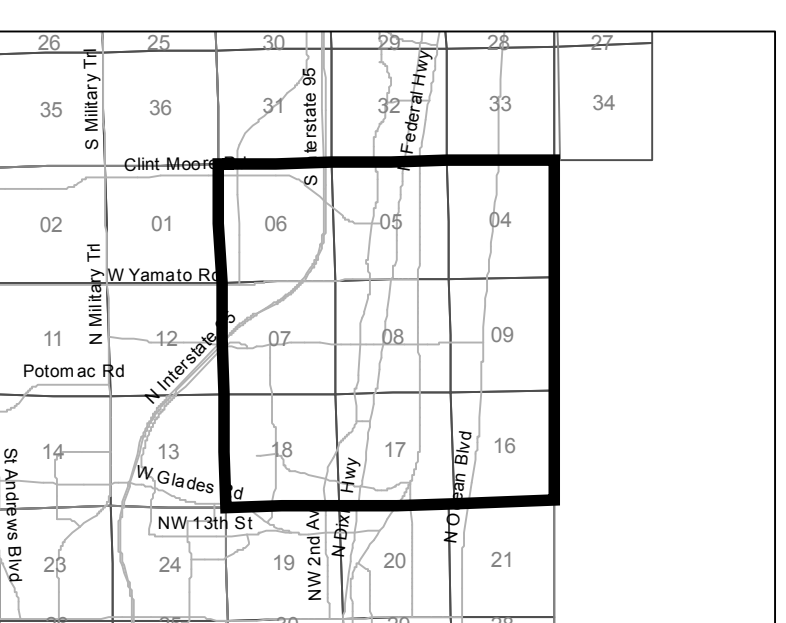
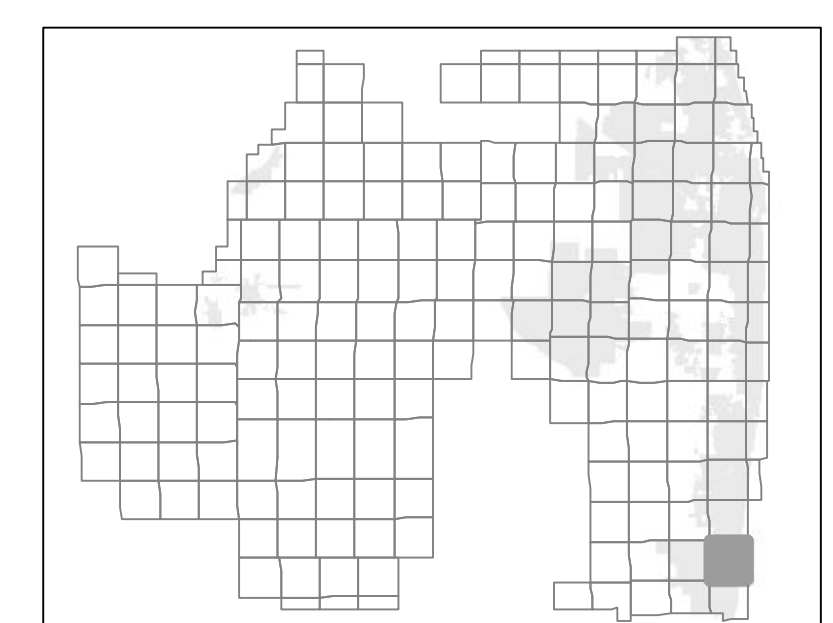




APPROVAL NO.	APPROVAL DATE	APPROVAL TYPE	APPROVAL STATUS
1000	1980	1980-0001	APPROVED
1001	1980	1980-0002	APPROVED
1002	1980	1980-0003	APPROVED
1003	1980	1980-0004	APPROVED
1004	1980	1980-0005	APPROVED
1005	1980	1980-0006	APPROVED
1006	1980	1980-0007	APPROVED
1007	1980	1980-0008	APPROVED
1008	1980	1980-0009	APPROVED
1009	1980	1980-0010	APPROVED
1010	1980	1980-0011	APPROVED
1011	1980	1980-0012	APPROVED
1012	1980	1980-0013	APPROVED
1013	1980	1980-0014	APPROVED
1014	1980	1980-0015	APPROVED
1015	1980	1980-0016	APPROVED
1016	1980	1980-0017	APPROVED
1017	1980	1980-0018	APPROVED
1018	1980	1980-0019	APPROVED
1019	1980	1980-0020	APPROVED
1020	1980	1980-0021	APPROVED
1021	1980	1980-0022	APPROVED
1022	1980	1980-0023	APPROVED
1023	1980	1980-0024	APPROVED
1024	1980	1980-0025	APPROVED
1025	1980	1980-0026	APPROVED
1026	1980	1980-0027	APPROVED
1027	1980	1980-0028	APPROVED
1028	1980	1980-0029	APPROVED
1029	1980	1980-0030	APPROVED
1030	1980	1980-0031	APPROVED
1031	1980	1980-0032	APPROVED
1032	1980	1980-0033	APPROVED
1033	1980	1980-0034	APPROVED
1034	1980	1980-0035	APPROVED
1035	1980	1980-0036	APPROVED
1036	1980	1980-0037	APPROVED
1037	1980	1980-0038	APPROVED
1038	1980	1980-0039	APPROVED
1039	1980	1980-0040	APPROVED
1040	1980	1980-0041	APPROVED
1041	1980	1980-0042	APPROVED
1042	1980	1980-0043	APPROVED
1043	1980	1980-0044	APPROVED
1044	1980	1980-0045	APPROVED
1045	1980	1980-0046	APPROVED
1046	1980	1980-0047	APPROVED
1047	1980	1980-0048	APPROVED
1048	1980	1980-0049	APPROVED
1049	1980	1980-0050	APPROVED
1050	1980	1980-0051	APPROVED
1051	1980	1980-0052	APPROVED
1052	1980	1980-0053	APPROVED
1053	1980	1980-0054	APPROVED
1054	1980	1980-0055	APPROVED
1055	1980	1980-0056	APPROVED
1056	1980	1980-0057	APPROVED
1057	1980	1980-0058	APPROVED
1058	1980	1980-0059	APPROVED
1059	1980	1980-0060	APPROVED
1060	1980	1980-0061	APPROVED
1061	1980	1980-0062	APPROVED
1062	1980	1980-0063	APPROVED
1063	1980	1980-0064	APPROVED
1064	1980	1980-0065	APPROVED
1065	1980	1980-0066	APPROVED
1066	1980	1980-0067	APPROVED
1067	1980	1980-0068	APPROVED
1068	1980	1980-0069	APPROVED
1069	1980	1980-0070	APPROVED
1070	1980	1980-0071	APPROVED
1071	1980	1980-0072	APPROVED
1072	1980	1980-0073	APPROVED
1073	1980	1980-0074	APPROVED
1074	1980	1980-0075	APPROVED
1075	1980	1980-0076	APPROVED
1076	1980	1980-0077	APPROVED
1077	1980	1980-0078	APPROVED
1078	1980	1980-0079	APPROVED
1079	1980	1980-0080	APPROVED
1080	1980	1980-0081	APPROVED
1081	1980	1980-0082	APPROVED
1082	1980	1980-0083	APPROVED
1083	1980	1980-0084	APPROVED
1084	1980	1980-0085	APPROVED
1085	1980	1980-0086	APPROVED
1086	1980	1980-0087	APPROVED
1087	1980	1980-0088	APPROVED
1088	1980	1980-0089	APPROVED
1089	1980	1980-0090	APPROVED
1090	1980	1980-0091	APPROVED
1091	1980	1980-0092	APPROVED
1092	1980	1980-0093	APPROVED
1093	1980	1980-0094	APPROVED
1094	1980	1980-0095	APPROVED
1095	1980	1980-0096	APPROVED
1096	1980	1980-0097	APPROVED
1097	1980	1980-0098	APPROVED
1098	1980	1980-0099	APPROVED
1099	1980	1980-0100	APPROVED



ZONING QUAD 23
Zoning District Map of Palm Beach County

August 02, 2013

- 12345 Additional Approvals
- Zoning Quad Boundary
- Zoning District Boundary
- Corresponding PDD (CPDD) - Pursuant to Article 3.A.2.D of the ULDC (amended under Ordinance 2012-003)

- Overlays
- Parcels
- Municipality

- Water
- Section Lines
- 1 inch = 600 feet
- 600 1,200 Feet



PALM BEACH COUNTY
Planning, Zoning and Building Department

The Zoning Director has the authority to update the Official Zoning Map administratively to delineate a Planned Development District that corresponds to those prior approvals that are specified in Art.3.A.3.E.2, Planned Development Districts.