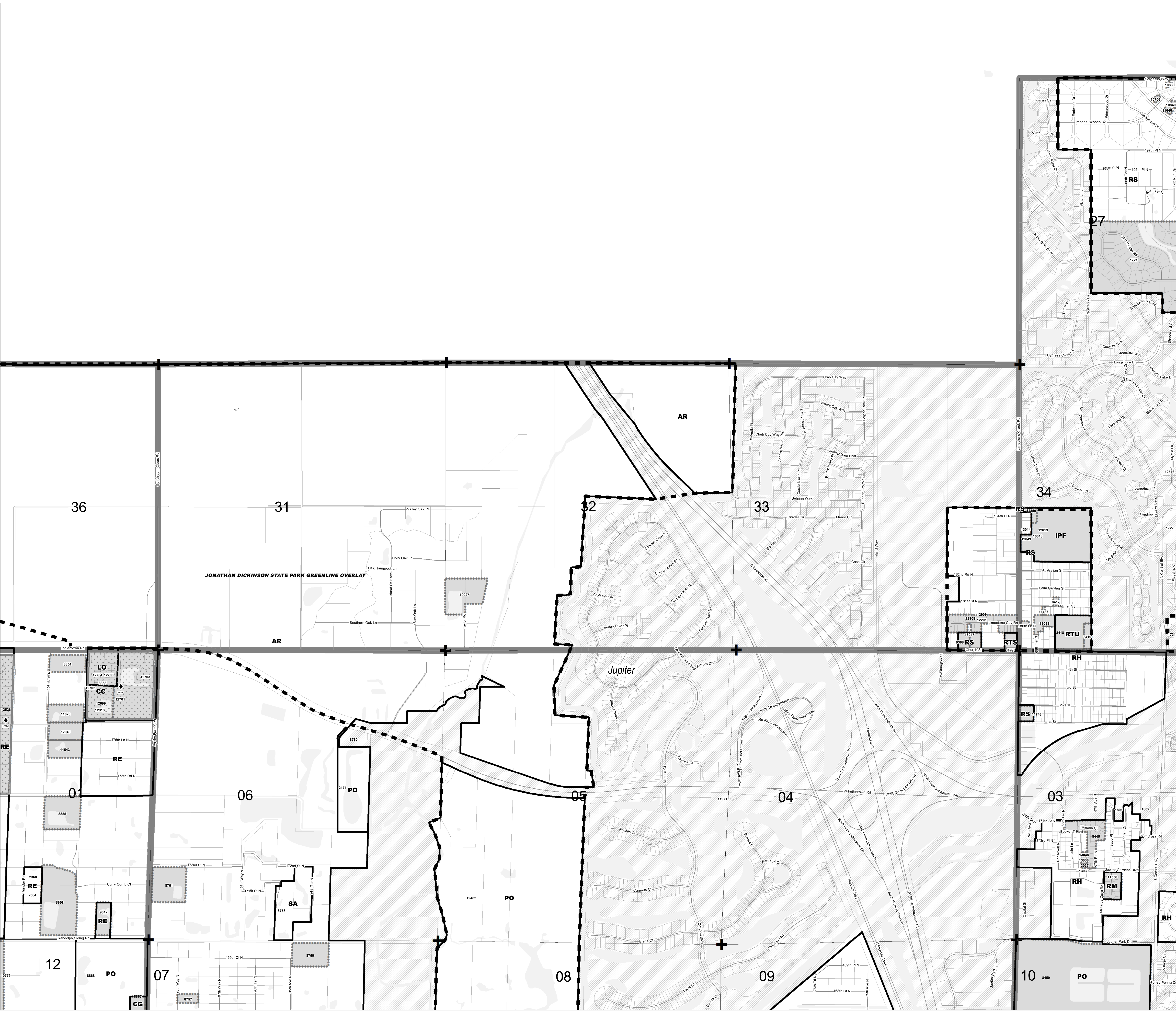


APPROVAL	APPROVAL	APPROVAL	APPROVAL	APPROVAL	APPROVAL	APPROVAL	APPROVAL	APPROVAL	APPROVAL
1001	1002	1003	1004	1005	1006	1007	1008	1009	1010
1011	1012	1013	1014	1015	1016	1017	1018	1019	1020
1021	1022	1023	1024	1025	1026	1027	1028	1029	1030
1031	1032	1033	1034	1035	1036	1037	1038	1039	1040
1041	1042	1043	1044	1045	1046	1047	1048	1049	1050
1051	1052	1053	1054	1055	1056	1057	1058	1059	1060
1061	1062	1063	1064	1065	1066	1067	1068	1069	1070
1071	1072	1073	1074	1075	1076	1077	1078	1079	1080
1081	1082	1083	1084	1085	1086	1087	1088	1089	1090
1091	1092	1093	1094	1095	1096	1097	1098	1099	1100



ZONING QUAD 40

Zoning District Map of Palm Beach County

July 01, 2019

- Additional Approvals
- Zoning Quad Boundary
- Zoning District Boundary
- Corresponding PDD (CPDD) - Pursuant to Article 3.A.2.D of the ULDC [amended under Ordinance 2012-003] The Zoning Director has the authority to update the Official Zoning Map administratively to delineate a Planned Development District that corresponds to those prior approvals that are specified in Art.3.A.3.E.2, Planned Development Districts.
- Overlays
- Parcels
- Municipality
- Water
- Section Lines

