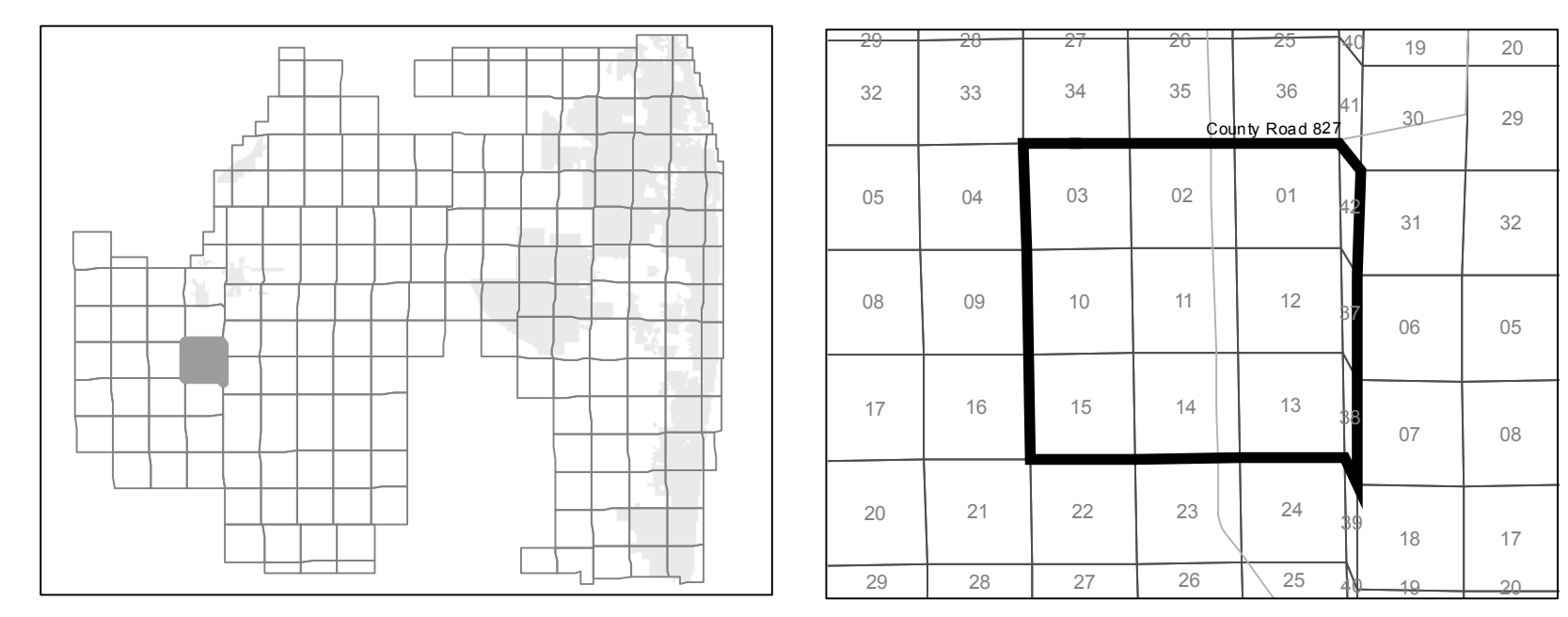
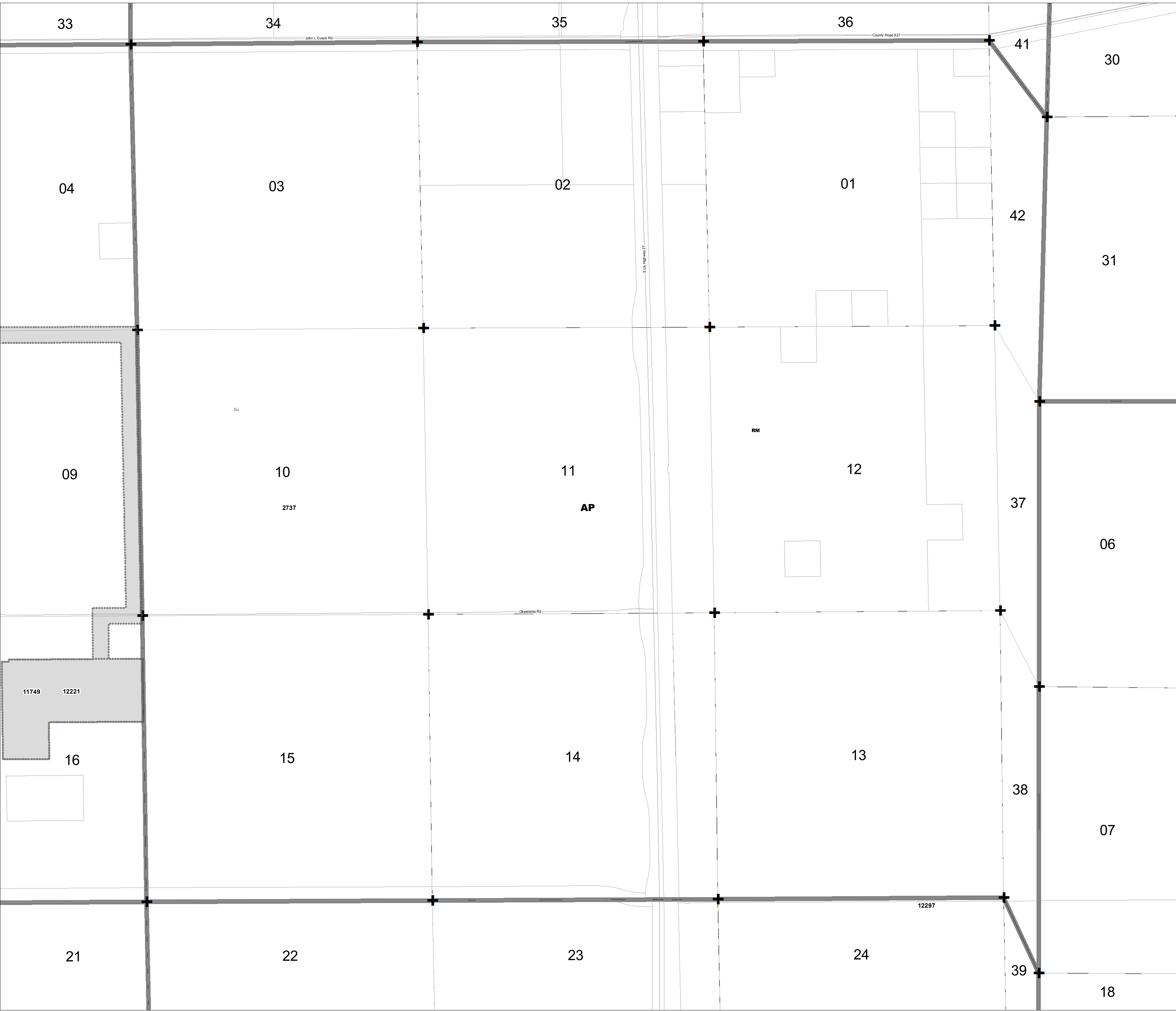


AGENT	NO.	DATE	APPROVAL	PERIOD	TRAFFIC	RESOLUTION	DATE	DECISION	STATUS
2737	AP	NA	1980-05-22	NA	1980-05-22	NA	1980-05-22	APPROVED	NA
1222	NA	CA	1980-05-24	NA	1980-05-24	NA	1980-05-24	APPROVED	NA
1222	NA	CA	1980-05-24	NA	1980-05-24	NA	1980-05-24	APPROVED	NA
1227	NA	CA	1980-05-24	NA	1980-05-24	NA	1980-05-24	APPROVED	NA



ZONING QUAD 222
 Zoning District Map of Palm Beach County
 February 19, 2014

12345	Additional Approvals		Overlays		Water
	Zoning Quad Boundary		Parcels		Section Lines
	Zoning District Boundary		Municipality		
	Corresponding PDD (CPDD) - Pursuant to Article 3.A.2.D of the ULDC (amended under Ordinance 2012-003) The Zoning Director has the authority to update the Official Zoning Map administratively to delineate a Planned Development District that corresponds to those prior approvals that are specified in Art.3.A.3.E.2, Planned Development Districts.				1 inch = 600 feet 0 600 1200 Feet

