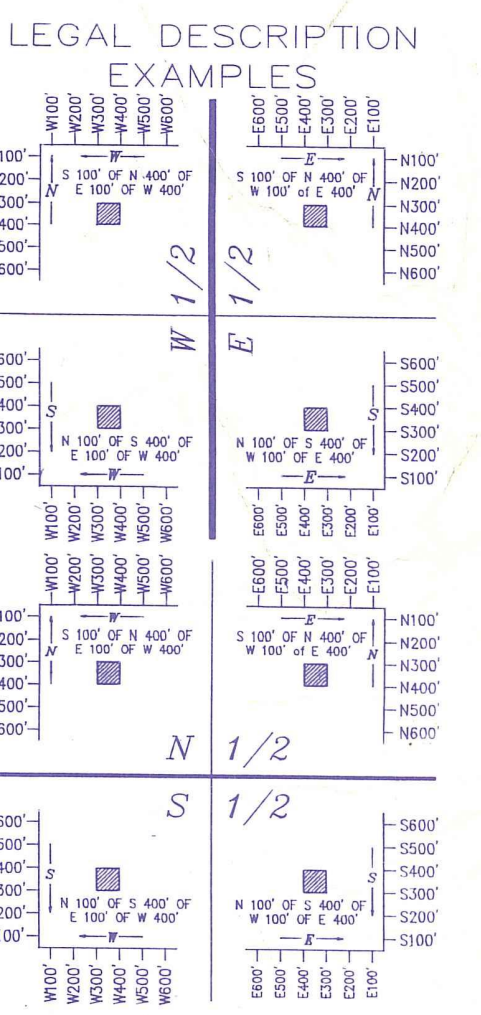
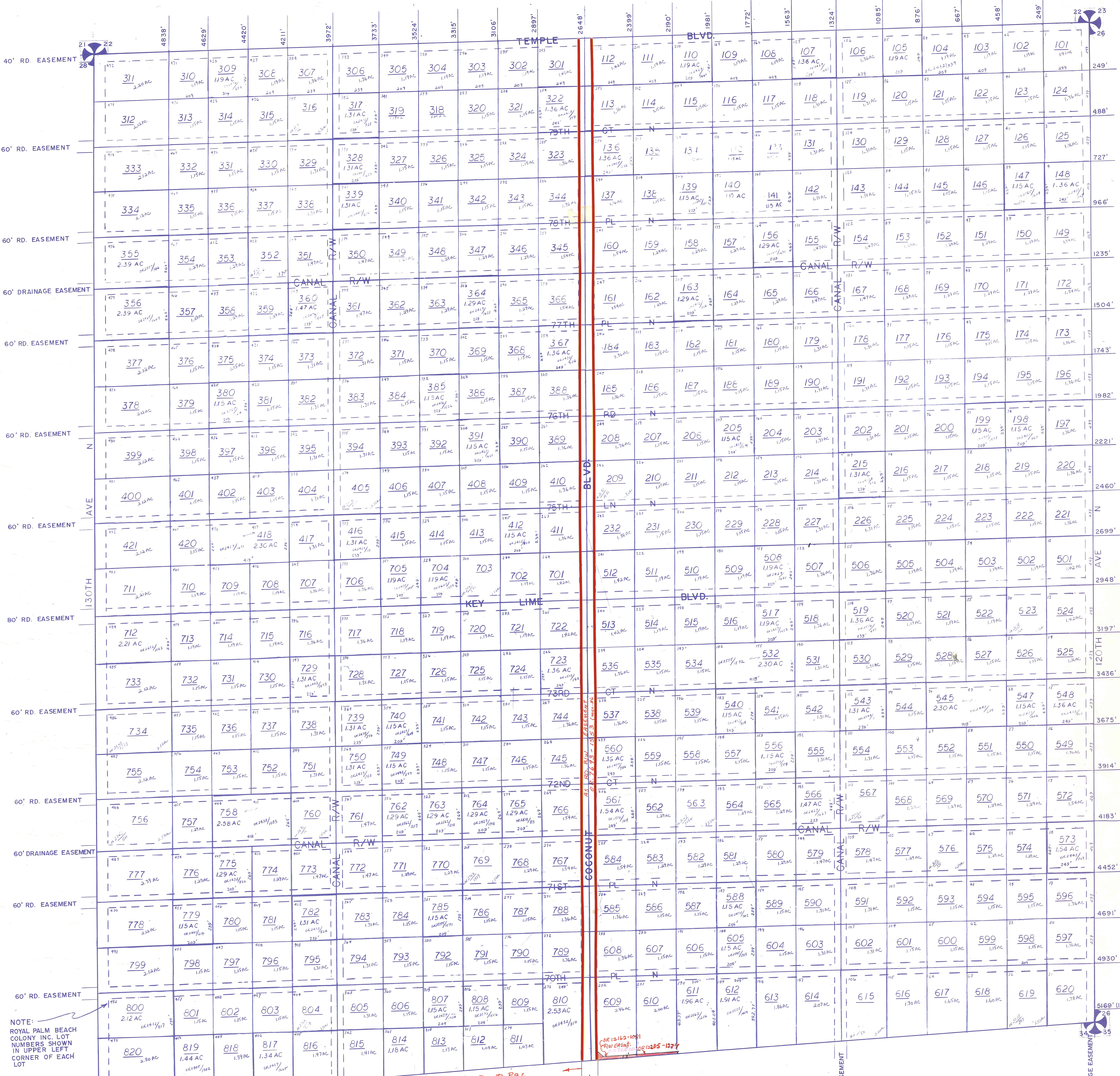
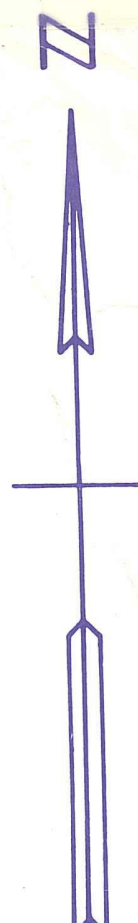


MEASURED ALONG NORTH LINE



Palm Beach County (County) makes no representation or warranties whatsoever on the attached / enclosed information reflected herein pertaining to easements, rights-of-way, setback lines, reservations, agreements, and other similar matters. The information provided herein should not be relied upon by the requesting party to confirm the existence / non-existence of facts contained herein.

ALL OF SECTION IS IN THE COUNTY CODED - 00

NOTE:
NOT TO BE REPRODUCED IN ANY FORM EXCEPT BY EXPRESS WRITTEN CONSENT FROM THE PALM BEACH COUNTY PROPERTY APPRAISER
Information shown hereon is compiled from the best available sources and CANNOT be used for surveys or land transfers of any type.

PALM BEACH COUNTY
GARY H. NIKOLITS
PROPERTY APPRAISER

36	37	38	39	40	41	42	43	44	45	46	47	48	49	50
1	2	3	4	5	6	7	8	9	10	11	12	13	14	15
16	17	18	19	20	21	22	23	24	25	26	27	28	29	30
31	32	33	34	35	36	37	38	39	40	41	42	43	44	45
46	47	48	49	50	51	52	53	54	55	56	57	58	59	60
61	62	63	64	65	66	67	68	69	70	71	72	73	74	75
76	77	78	79	80	81	82	83	84	85	86	87	88	89	90
91	92	93	94	95	96	97	98	99	100	101	102	103	104	105

RGE TWP SEC AERIAL
41 42 27 NO 57
SCALE 1"=200'
DRAWN BY OLLIS 9-26-77
UPDATED
R.P.B.C. "2"

NOTE: ROYAL PALM BEACH COLONY INC. LOT NUMBERS SHOWN IN UPPER LEFT CORNER OF EACH LOT

ORANGE BLVD. -> SEE RES. 95-1093-D to R.O.C. SEMINOLE to COCONUT.

RES. 12162-1091
R.O.W. EASEMENT
RES. 12205-1277

PLAT NO. 44-141-31657