

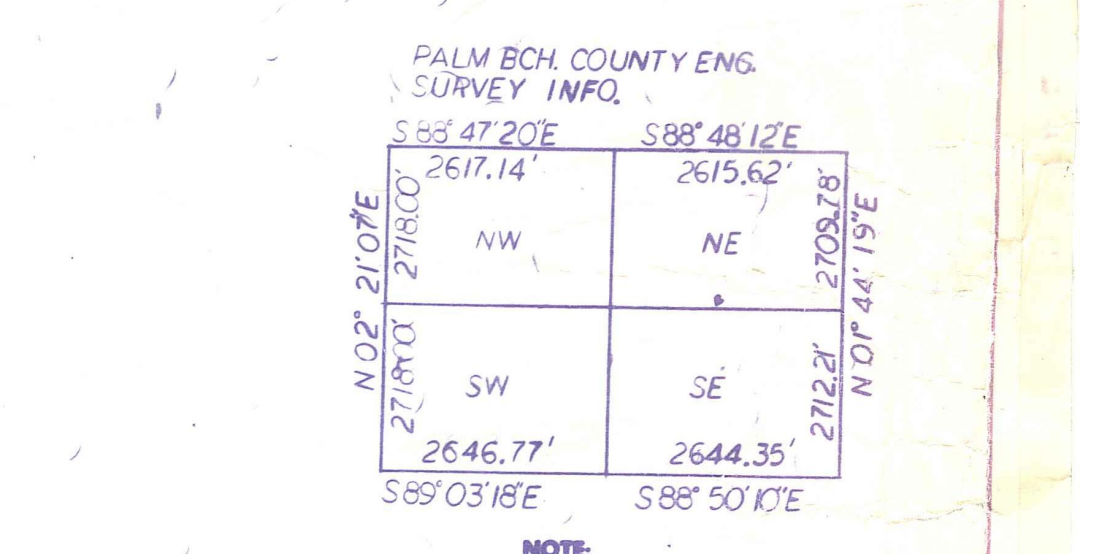
50' to P.B. Co.
DB 47-457 conveyed
to Royal Palm Bch.
City of 06-23-1990
Corrected on 2435-1943

- NW 01 WILLOWS FIRST ADD. (72) PB29P133
- SE 02 COUNTERPOINT ESTS PL1 PB32 P15678
- SE 03 COUNTERPOINT ESTS PL2 PB33 P7478
- SE 04 COUNTERPOINT ESTS PL3 PB33 P15978
- SE 05 COUNTERPOINT ESTS PL4 PB38 P13780
- SE 06 COUNTERPOINT ESTS PL5 PB40 P13860
- NE 07 COUNTRY WEST PB40 P17960
- SE 08 COUNTERPOINT ESTS PL6 PB44 P8460
- SW 09 COUNTERPOINT ESTS PL7 PB44 P14860
- SW 10 COUNTERPOINT ESTS PL8 PB45 P5360
- SW 11 COUNTERPOINT ESTS PL9 PB45 P10660
- SW 12 COUNTERPOINT ESTS PL11 PB48 P16500
- SW 13 COUNTERPOINT ESTS PL10 PB49 P4560
- SW 14 COUNTERPOINT ESTS PL12 PB50 P11660
- SW 15 COUNTERPOINT ESTS PL13 PB50 P13660
- NE 16 ROYAL PALM BEACH BUSINESS PARK (66) PB56P71
- SW 17 COUNTERPOINT ESTS PL 14 (67) PB63P34 (72)

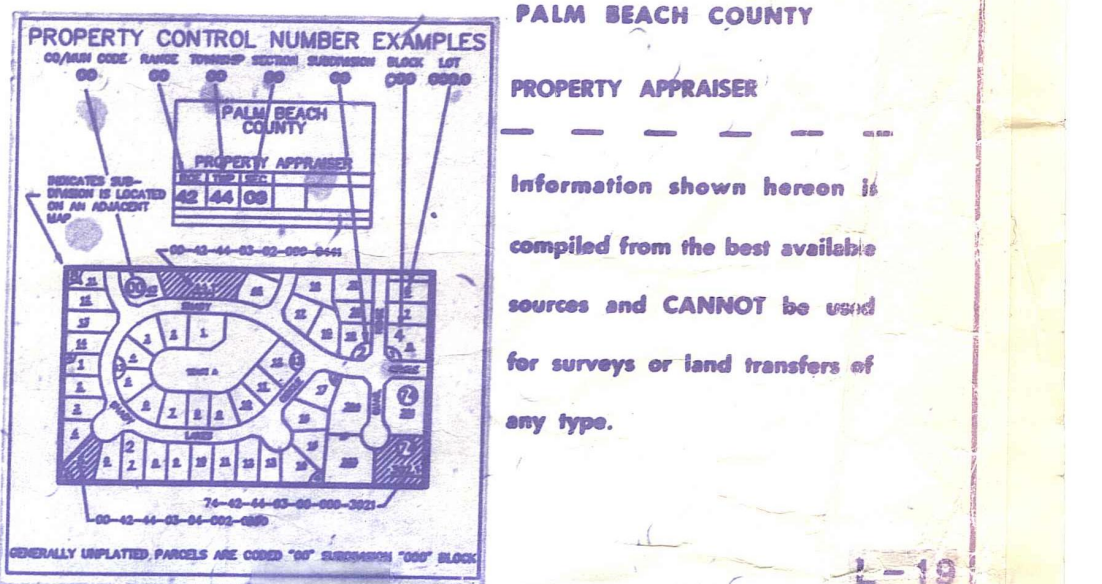
Notes:
- All road R/W's within the plats of Counterpoint Estates (plats 1 thru 14) disposed to Village of Royal Palm Bch. by OR 5991-1521.

Palm Beach County (County) makes no representation or warranties whatsoever on the attached / enclosed information reflected herein pertaining to easements, rights-of-way, setback lines, reservations, agreements, and other similar matters. The information provided herein should not be relied upon by the requesting party to confirm the existence / non-existence of facts contained herein.

NOTE: (72) IS THE MUNICIPALITY OF THE VILLAGE OF ROYAL PLM BCH.



NOTE:
NOT TO BE REPRODUCED IN ANY FORM EXCEPT BY EXPRESS WRITTEN CONSENT FROM THE PALM BEACH COUNTY PROPERTY APPRAISER



PALM BEACH COUNTY
N-21
PROPERTY APPRAISER

RGE	TWP	SEC	AERIAL
41	43	25	NO 2042
SCALE 1" = 200'			
DRAWN BY M FISH			
UPDATED 7-7-95 LAC			