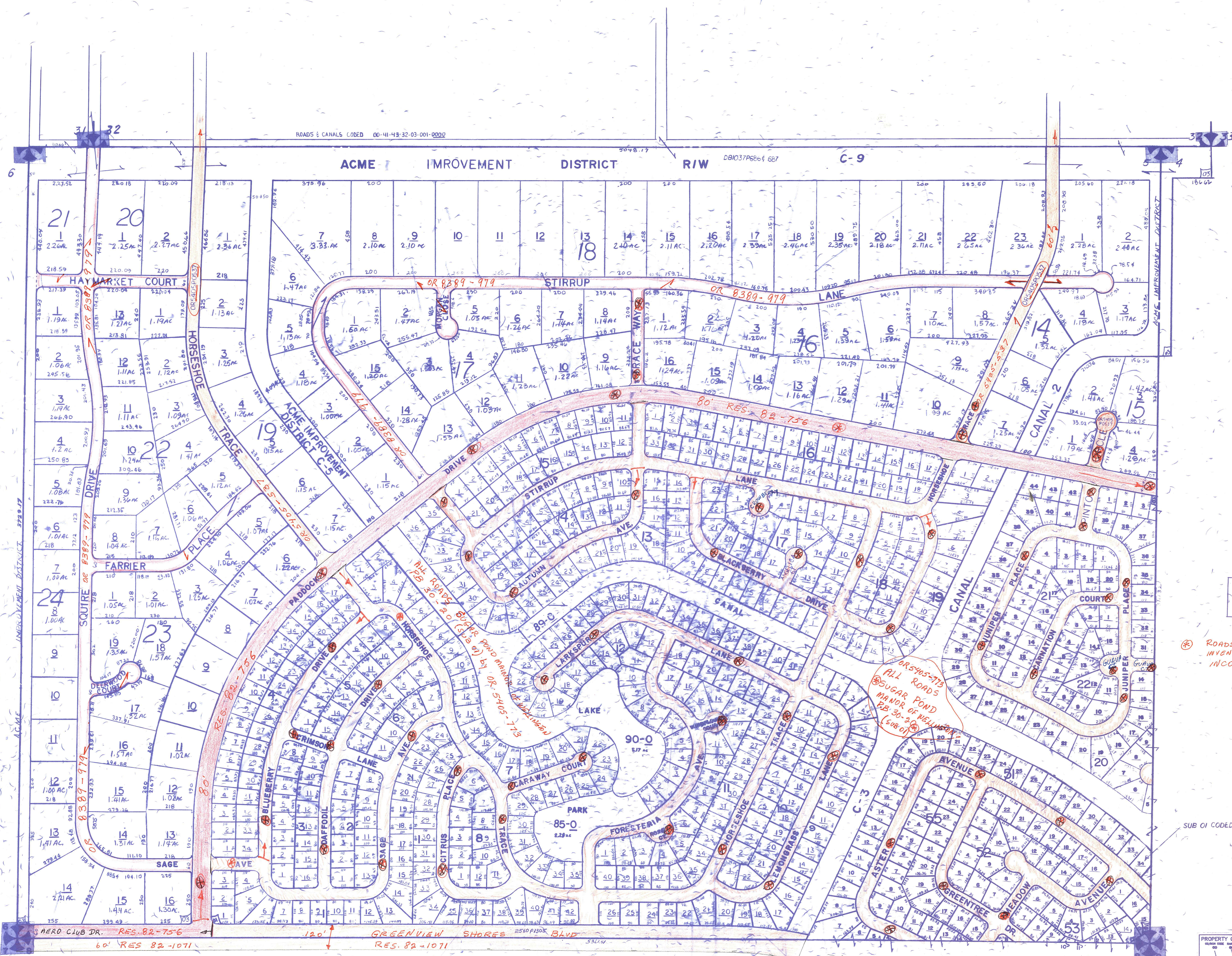
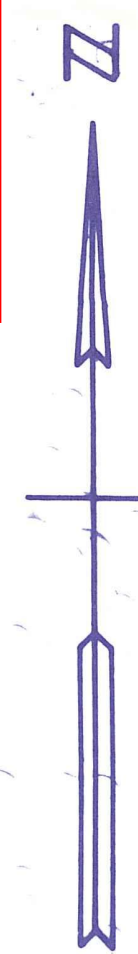


Palm Beach County (County) makes no representation or warranties whatsoever on the attached / enclosed information reflected herein pertaining to easements, rights-of-way, setback lines, reservations, agreements, and other similar matters. The information provided herein should not be relied upon by the requesting party to confirm the existence / non-existence of facts contained herein.

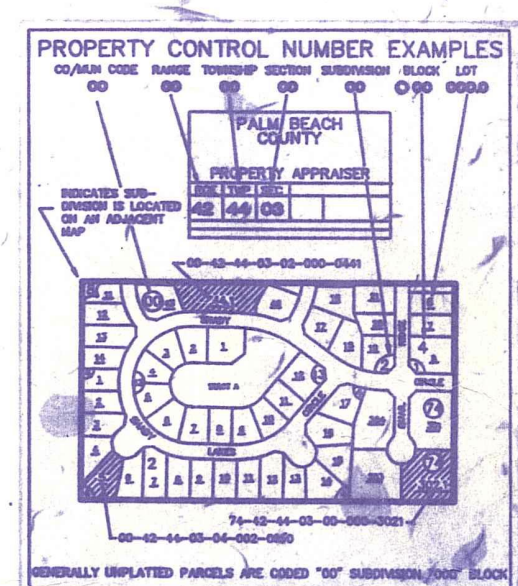


NOTE
ALL OF SEC IN COUNTY

ROADS REMOVED FROM RD. MAINTENANCE INVENTORY AS RESULT OF WELLINGTON INCORPORATION ON NOV. 7, 1995

OR 545-713
ALL ROADS
SUGAR POND
MANOR OF WELLINGTON
RD. 30-3-3
(SUB OF)

SUB OF CODED 41-44-04-



NOTE
NOT TO BE REPRODUCED IN ANY FORM EXCEPT BY EXPRESS WRITTEN CONSENT FROM THE PALM BEACH COUNTY ASSESSOR.
Information shown herein is compiled from the best available sources and CANNOT be used for surveys or land transfers of any type.

PALM BEACH COUNTY

PROPERTY APPRAISER			
RGE	TWP	SEC	AERIAL
41	44	5	N055-66
SCALE 1"=200'			
DRAWN BY OLLIS			
UPDATED 01-18-99 Jml			