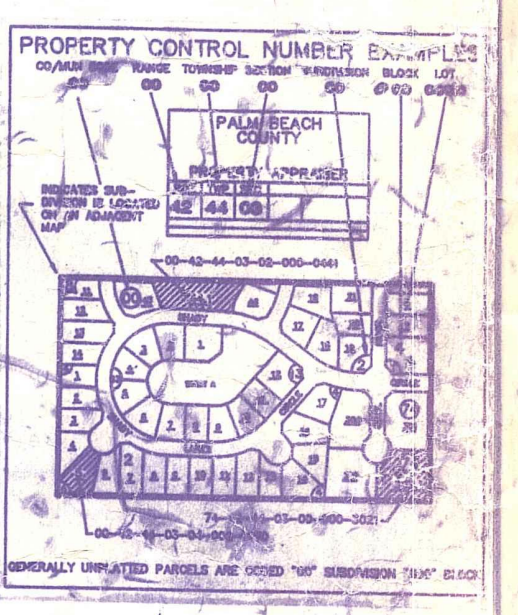
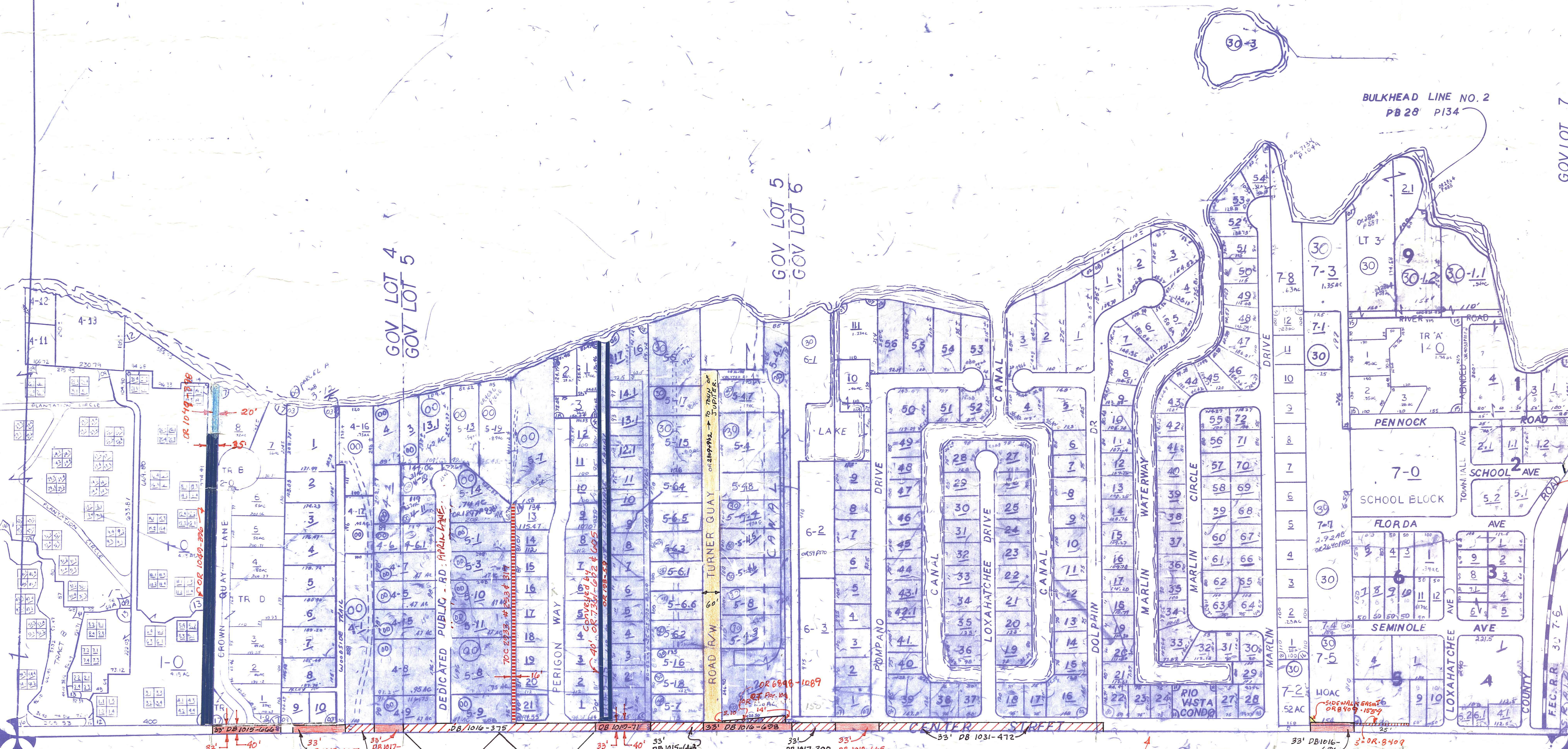


- 01 PENNOCK PLACE PB 2-67 30
- 02 RIVERSIDE PB 24-123 30
- 03 WOODSIDE ESTATES PB 25-152 00
- 04 RIVERSIDE ON THE LOXHATCHEE PB 9-5 00-30-60
- 05 PENN WATERWAY PB 25-203 30
- 06 ANCHORAGE POINT PB 24-214 00
- 07 COVE HARBOR PB 24-216 30
- 08 RIO VISTA PB 27-121 30
- 09 JUPITER IN THE PINES PB 25-143 30
- 10 BAY HARBOR PB 26-213 60
- 11 RIO VISTA CONDO 30
- 12 JUPITER PLANTATION PB 34 P162 (1979)
- 13 JUPITER PLANTATION FIRST ADDITION PB 34 P165 (1979)
- 14 PERIGON POINT (1979) PB 36 P37
- 15 ALMA'S PLACE (1985) PB 47 P97
- 16 MARLIN RIDGE (1987) PB 54 P33
- 17 CROWN QUAY LANE (1989) PB 60 R164
- 18 GOVT LT 5 SUB OF PT (89) PB 64 P109
- NW 19 NOIT GEDACHT (81) PB 67 P81 60

Palm Beach County (County) makes no representation or warranties whatsoever on the attached / enclosed information reflected herein pertaining to easements, rights-of-way, setback lines, reservations, agreements, and other similar matters. The information provided herein should not be relied upon by the requesting party to confirm the existence / non-existence of facts contained herein.

NOTE: JUPITER PLANTATION PHASE II CODED SUB-09 TO SEC 35 SEE TM 79-2 FOR DETAIL



NOTE:
NOT TO BE REPRODUCED IN ANY FORM EXCEPT BY EXPRESS WRITTEN CONSENT FROM THE PALM BEACH COUNTY ASSESSOR.
Information shown hereon is compiled from the best available sources and CANNOT be used for surveys or land transfers of any type.

SEE SEC. 31-40-43
OLD DIXIE HWY
SEE NOTES
SECT. 12-41-42

PALM BEACH COUNTY			
4			
PROPERTY APPRAISER			
RGE	TWP	SEC	AERIAL
42	40	36	NO 745
SCALE 1" = 200'			
DRAWN BY KESHIAN			
UPDATED			

Center street CMB 2-105 (60') 2-6-1917. Running along Twp. Line Sections 36-40-42 & 1-41-42 Also see Sec. 1-41-42 & Map file 17

This portion (33') also by DB 1017-665
This portion (33') also by DB 1017-669

SEE ALSO CMB 3-6-1906 IN 1 MILE FROM 3RD CORNER

35 2

31 6