

**Palm Beach County (County) makes no representation or warranties whatsoever on the attached / enclosed information reflected herein pertaining to easements, rights-of-way, setback lines, reservations, agreements, and other similar matters. The information provided herein should not be relied upon by the requesting party to confirm the existence / non-existence of facts contained herein.**

Notes:  
 Indiantown Rd. 100' wide  
 Disposed to DOT DB 935-410

**EASEMENTS 1 thru 5  
 P.B.C. to S.WATER  
 MANAGEMENT Dist.  
 FOR THE PURPOSE OF  
 CONSERVATION TO  
 RETAIN LAND OR WATER  
 IN THEIR NATURAL  
 CONDITION.  
 O.R. 11202-124**

NOTE:  
 PT OF SEC IN JUPITER COUNTY

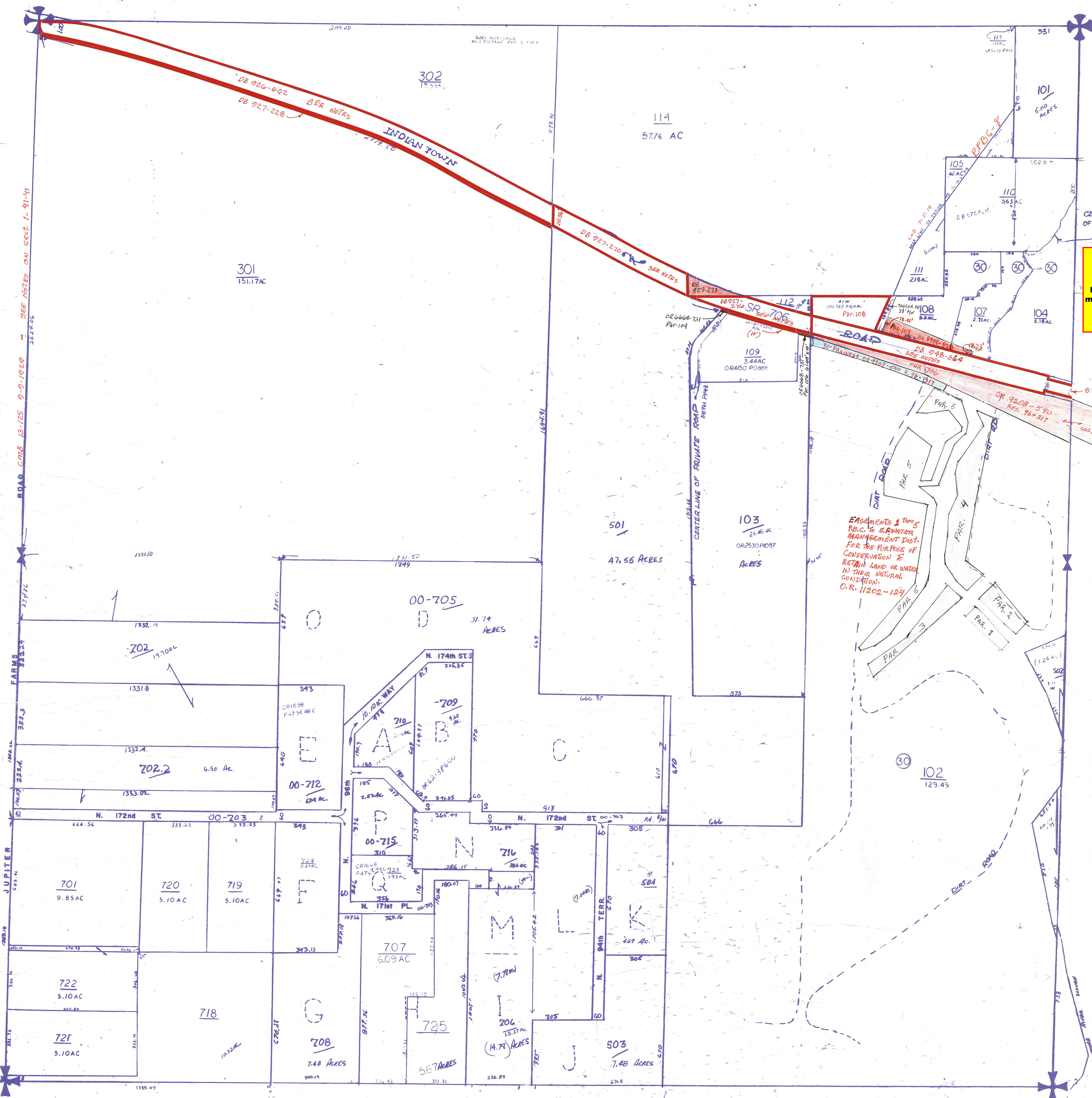
NOTE:  
 NOT TO BE REPRODUCED IN ANY FORM EXCEPT BY EXPRESS WRITTEN CONSENT FROM THE PALM BEACH COUNTY PROPERTY APPRAISER

Information shown herein is compiled from the best available sources and CANNOT be used for surveys or land transfers of any type.

**PALM BEACH COUNTY**  
 N-6  
 PROPERTY APPRAISER

06	31	32	33	34	35	36	37
1	2	3	4	5	6	7	8
12	7	8	9	10	11	12	7
13	18	17	16	15	14	13	9
24	19	20	21	22	23	24	19
25	30	29	28	27	26	25	30
36	31	32	33	34	35	36	31
1	2	3	4	5	6	7	8

RGE	TWP	SEC	AERIAL
42	41	6	No 207B
SCALE	1" = 200'		
DRAWN BY	Jon Bule		
UPDATED	4/1/2		



ROAD CM 8 13-125 9-9-1929 - SEE NOTES ON SECT. 1-41-41

JUPITER FARMS 3822.4 3822.4 3822.4 3822.4 3822.4 3822.4 3822.4 3822.4 3822.4 3822.4