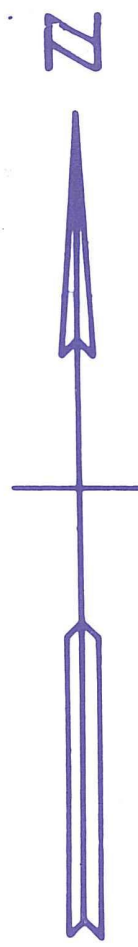


15 14  
22

14 13  
24

LAKE PARK WEST

DB 986-349



Notes:  
All Road R/W Located within P.B. 41-193, Horseshoe Acres West Replat, Disposed to City of P.B. Gardens OR 6314-831.

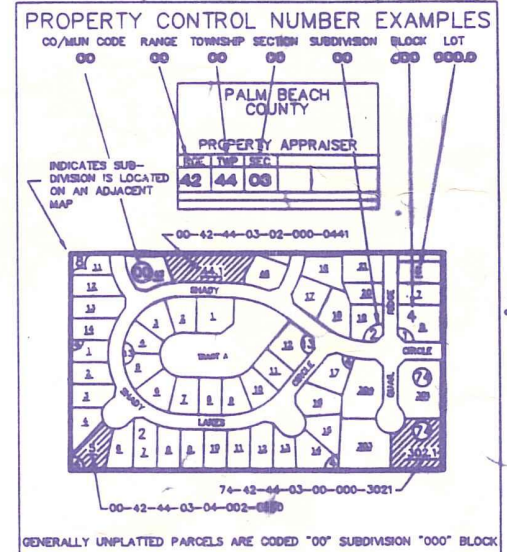
**Palm Beach County (County) makes no representation or warranties whatsoever on the attached / enclosed information reflected herein pertaining to easements, rights-of-way, setback lines, reservations, agreements, and other similar matters. The information provided herein should not be relied upon by the requesting party to confirm the existence / non-existence of facts contained herein.**

01 HORSESHOE ACRES UNRECORDED PLAT AM 95  
02 HORSESHOE ACRES WEST (TAKEN BY SUB. 04) PD74740  
03 HORSESHOE ACRES SHENANDOAH ADD PB36 P55  
04 HORSESHOE ACRES WEST REPL(1982)PB41P193  
05 HORSESHOE ACRES SHENANDOAH ADD CORRECTIVE PL (88) PB56P15

NOTE:  
ALL 1/2 SEC IN PB GARDENS

\* SEE SEC FOLDER:  
RD R/W OR 6314-831

NOTE:  
NOT TO BE REPRODUCED IN ANY FORM EXCEPT BY EXPRESS WRITTEN CONSENT FROM THE PALM BEACH COUNTY PROPERTY APPRAISER  
Information shown herein is compiled from the best available sources and CANNOT be used for surveys or land transfers of any type.

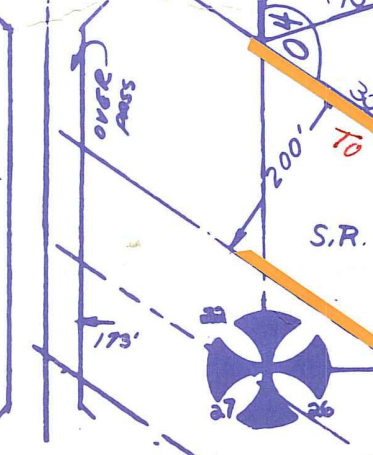


PALM BEACH COUNTY  
N-14  
PROPERTY APPRAISER

|    |    |    |    |    |    |    |    |
|----|----|----|----|----|----|----|----|
| 36 | 31 | 32 | 33 | 34 | 35 | 36 | 31 |
| 1  | 6  | 5  | 4  | 3  | 2  | 1  | 6  |
| 12 | 7  | 8  | 9  | 10 | 11 | 12 | 7  |
| 13 | 18 | 17 | 16 | 15 | 14 | 13 | 18 |
| 24 | 19 | 20 | 21 | 22 | 23 | 24 | 19 |
| 25 | 30 | 29 | 28 | 27 | 26 | 25 | 30 |
| 36 | 31 | 32 | 33 | 34 | 35 | 36 | 31 |
| 1  | 6  | 5  | 4  | 3  | 2  | 1  | 6  |

|          |                |     |         |
|----------|----------------|-----|---------|
| RGE      | TWP            | SEC | AERIAL  |
| 42       | 42             | 23  | NO 1056 |
| SCALE    | 1" = 200'      |     |         |
| DRAWN BY | KESHIAN 1-8-76 |     |         |
| UPDATED  | 5-8-79         |     |         |

PARKWAY STATE SUNSHINE



24 26 25

SEE 42-42-26

EPB 6

G-12