

- SE 01 CENTURY VILL PL11 PB29P123
- SE 02 WINDSOR CONDOS
- SE 03 CAMDEN CONDOS
- W 1/2 04 VISTA CENTER OF PALM BEACH (89) PB61P11R
- NW 05 VISTA CENTER OF PALM BEACH PL 5 (90) PB63P199
- 06 VISTA CENTER OF PALM BEACH PL 3 (92) PB68P128

**NOTES**

- JOG RD: 1 MILE NORTH OF OKECHOBEE BLVD. SEC RES. 92-1499

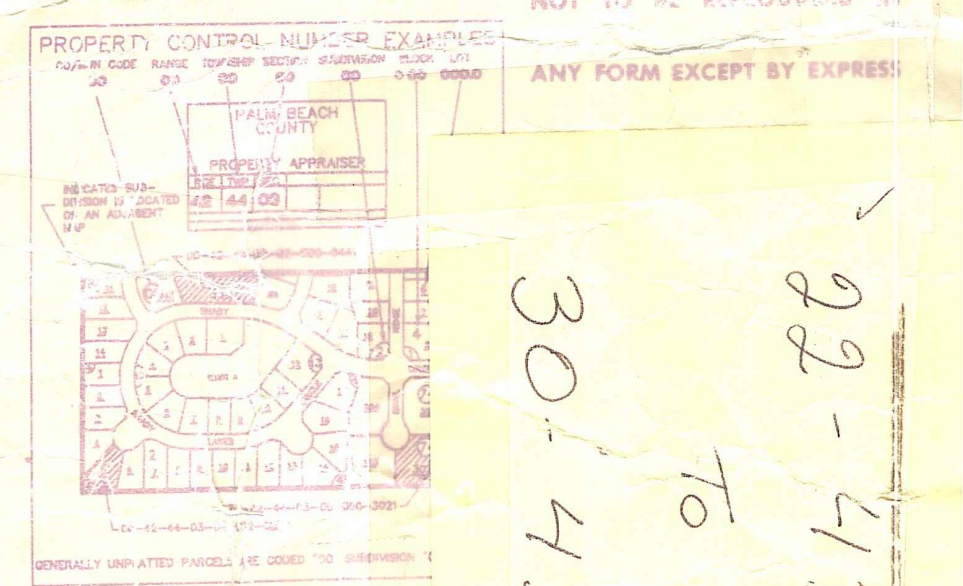
- OKECHOBEE JOG RD - PREVIEW EASEM. IS:

OR 4196-838 67 - PRIVATE; W. OF SEC 22 & N. OF SEC 100; FOR ACRES: PAR. P-058.

OR 4298-1430

**Palm Beach County (County) makes no representation or warranties whatsoever on the attached / enclosed information reflected herein pertaining to easements, rights-of-way, setback lines, reservations, agreements, and other similar matters. The information provided herein should not be relied upon by the requesting party to confirm the existence / non-existence of facts contained herein.**

NOTE: ALL OF SECTION IN COUNTY 00



30-43-42  
92-43-42

PROPERTY ATTAINER

TRAC	TWP	SEC	ALPHA
42	43	42	1

PBC: WATER & SEWER EASEMENTS IN E. BC OF W. 60' OF LOT 20, LESS OKECHOBEE HWY & ALSO ACROSS W. 60' SEE OR 37-40-1473 & 30-71-1058

Liftstation Esmt. OR 446-1004

OR 9571 - 74 (V2)

OR 9571-74 (V2)

OR 2996-309 TO D.O.T. SEE 11-11-1997 3712-1494 TO D.O.T. OR 5310-1180

OR 104

Lot 168  
Lot 169  
PC 96-191

W. 12' U.E. UNLTD BY PBC OR 17279-504

Easements overlap

25' U.E. OR 4756-855

25' U.E. OR 4756-1058 Par. 1

25' U.E. OR 4756-1058 Par. 2

25' U.E. OR 4756-1058 Par. 3

25' U.E. OR 4756-1058 Par. 4

25' U.E. OR 4756-1058 Par. 5

25' U.E. OR 4756-1058 Par. 6

25' U.E. OR 4756-1058 Par. 7

25' U.E. OR 4756-1058 Par. 8

25' U.E. OR 4756-1058 Par. 9

25' U.E. OR 4756-1058 Par. 10

25' U.E. OR 4756-1058 Par. 11

25' U.E. OR 4756-1058 Par. 12

25' U.E. OR 4756-1058 Par. 13

25' U.E. OR 4756-1058 Par. 14

25' U.E. OR 4756-1058 Par. 15

25' U.E. OR 4756-1058 Par. 16

25' U.E. OR 4756-1058 Par. 17

25' U.E. OR 4756-1058 Par. 18

25' U.E. OR 4756-1058 Par. 19

25' U.E. OR 4756-1058 Par. 20

25' U.E. OR 4756-1058 Par. 21

25' U.E. OR 4756-1058 Par. 22

25' U.E. OR 4756-1058 Par. 23

25' U.E. OR 4756-1058 Par. 24

25' U.E. OR 4756-1058 Par. 25

25' U.E. OR 4756-1058 Par. 26

25' U.E. OR 4756-1058 Par. 27

25' U.E. OR 4756-1058 Par. 28

25' U.E. OR 4756-1058 Par. 29

25' U.E. OR 4756-1058 Par. 30

25' U.E. OR 4756-1058 Par. 31