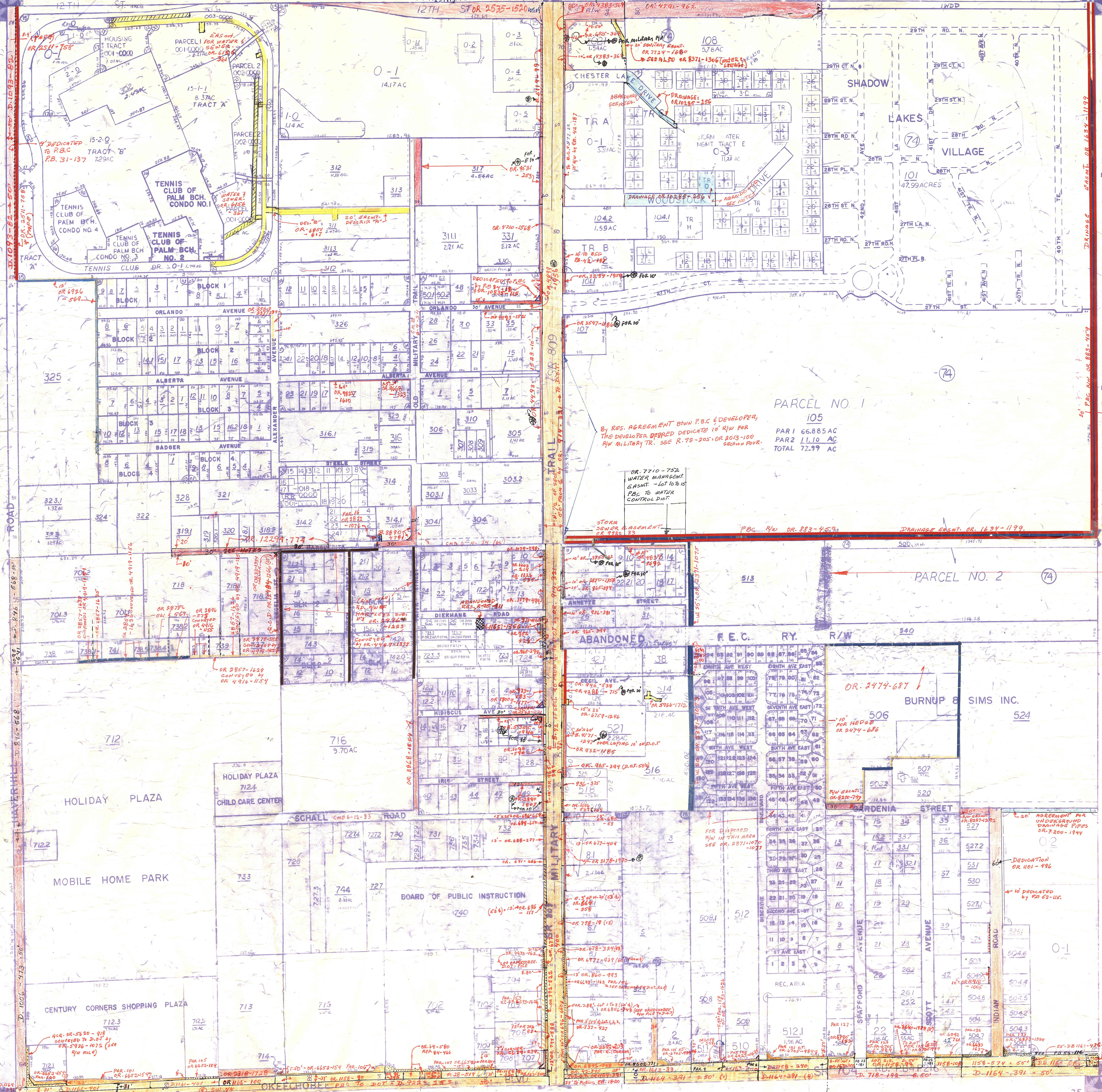


Note: One Military Tract is 66 FT
 Wide County Ordinance Maps, Book 8
 Page 287 and 100 FT Wide in Florida
 Book 9 Page 454.



- SE 01 OKEECHOBEE GARDEN EST. PB 23 P101
- NW 02 ROSELAND PARK PB 11-17
- NW 03 " HAMPTON ADD PB 12-26
- NW 04 MILITARY PK NICHOLS ADD PB 10 14
- NW 05 " " " PB 10-80
- SW 06 " " 3rd NICHOLS ADD PB 11 72
- SW 07 HARTLEYS SUB UNREC.
- NW 08 MILITARY PARK PB 10 6
- SW 09 " " DIEKHANS ADD PB 12-56
- SE 10 " " HALLS ADD PB 12-44
- SE 11 SUBURBAN HOMESITES PB 16 20
- SE 12 ATLANTIC COMM. PK. PB 28-89
- 13
- SE 14 SEMINOLE COLONY CONDO.
- NW 15 TENNIS CLUB OF P.B. PL. 2 PB 31-137
- NW 16 " " P.B. CONDOS
- NW 17 " " P.B. UNIT 3 PB 37-195
- NW 18 TENNIS CLUB OF P.B. PL. 4 (81) PB 41-60
- NE 19 WESTCHESTER TOWNHOUSES (82) PB 42-187
- NW 20 MARGUERITA VILLAS THWS (84) PB 45-185
- NW 21 TENNIS CLUB OF PALM BEACH PL. 7 PB 48 P32 (85)
- NW 22 TENNIS CLUB OF PALM BEACH PL. 5 PB 48 P14 (86)
- NW 23 TENNIS CLUB OF PALM BEACH PL. 6 PB 48 P16 (87)
- SE 24 HABITAT PB 52 P115 (86)
- NW 25 CROSSTOWN PLAZA (88) PB 55-117
- NE 26 WESTCHESTER TOWNHOUSES REPL PB 55-123

- NOTES -

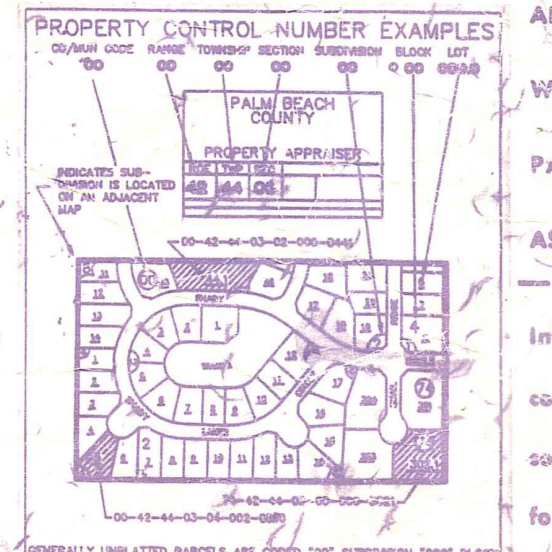
Approx. 67% ACRES TO BE USED AS
 DRAINAGE AREA FOR SEMINOLE COLONY
 AS PER LICENSE AGREEMENT WITH P.B.C.
 RES. R-761186 (RES. FILE)

CHESTER LAKE DR. & WOODSTOCK DR. HAS
 BE ABANDONED AS R. 98-270
 OR. 10272-1305. SEE ALSO AGREEMENT
 BETWEEN HOMEOWNERS & P.B.C. OR 10872-1915
 ABANDONING ALL INTERESTS IN THE ROADS
 & GRANTING TO THE COUNTY ACCESS TO DRAINAGE
 LINES.

MILITARY TR. :
 R/W IN O.R.B. AS INDICATED WITH ⊗ WERE
 CONVEYED TO D.O.T PER OR 1118-116

MARGUERITA ST. : SEE OR 10294-1744 FOR R/W
 OR 10272-1305. SEE ALSO AGREEMENT
 13832-1297, 13110
 13832-1388, 1311-7182
 13832-111, 111-111
 13832-725-11181

NOTE
 PT OF SEC IN COUNTY
 HT OF SEC IN MUNIC OF
 WEST PALM BEACH (74)



NOTE
 NOT TO BE REPRODUCED IN
 ANY FORM EXCEPT BY EXPRESS
 WRITTEN CONSENT FROM THE
 PALM BEACH COUNTY
 ASSESSOR.
 Information shown hereon is
 compiled from the best available
 sources and CANNOT be used
 for surveys or legal transfers of
 any type.

PALM BEACH COUNTY
 N. 23
 PROPERTY APPRAISER

RGE	TWP	SEC	AERIAL
42	43	24	NO 65-74
SCALE 1" = 200'			
DRAWN BY OLLI			
UPDATED			

Palm Beach County (County) makes no representation or warranties whatsoever on the attached / enclosed information reflected herein pertaining to easements, rights-of-way, setback lines, reservations, agreements, and other similar matters. The information provided herein should not be relied upon by the requesting party to confirm the existence / non-existence of facts contained herein.