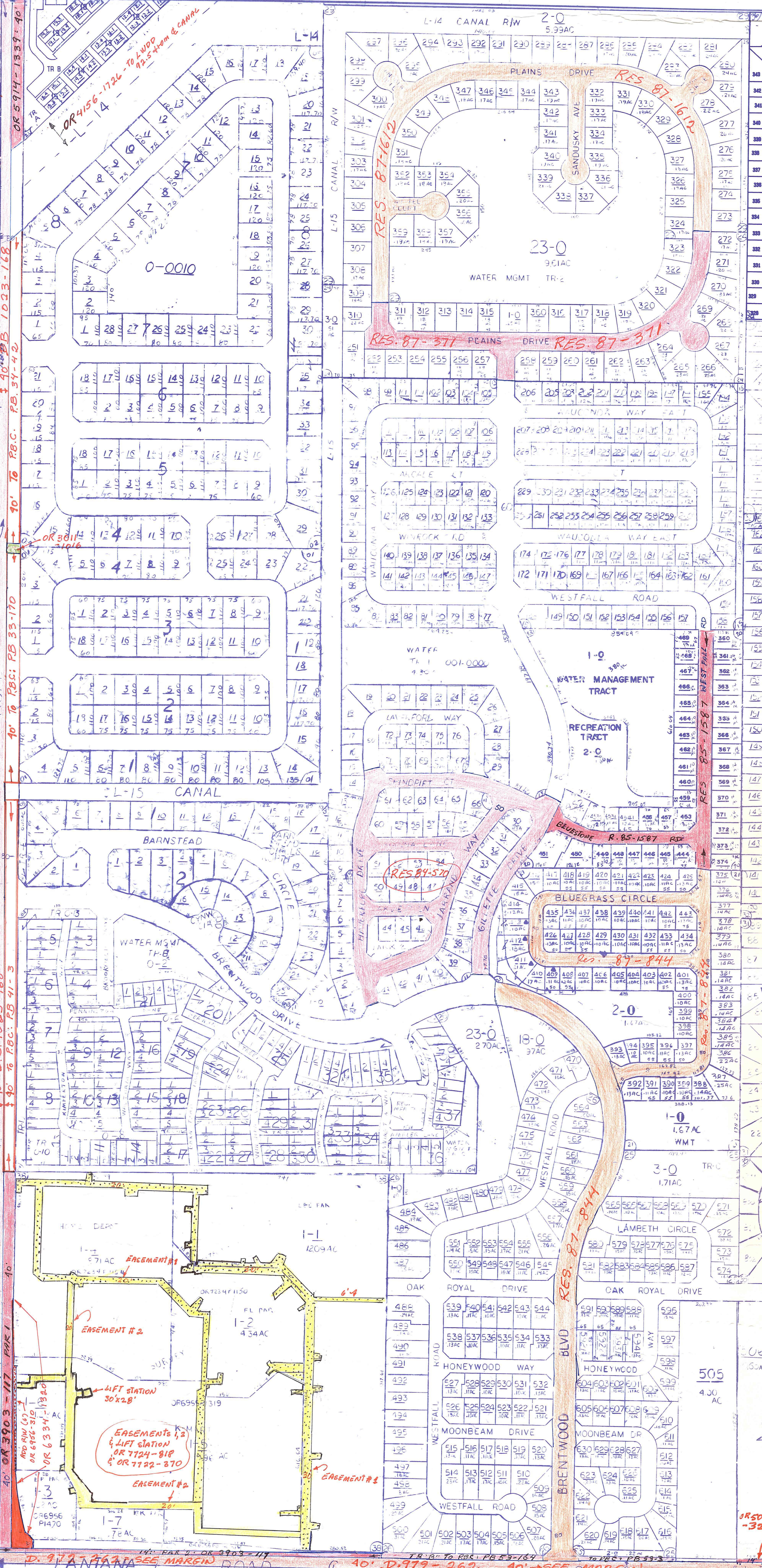
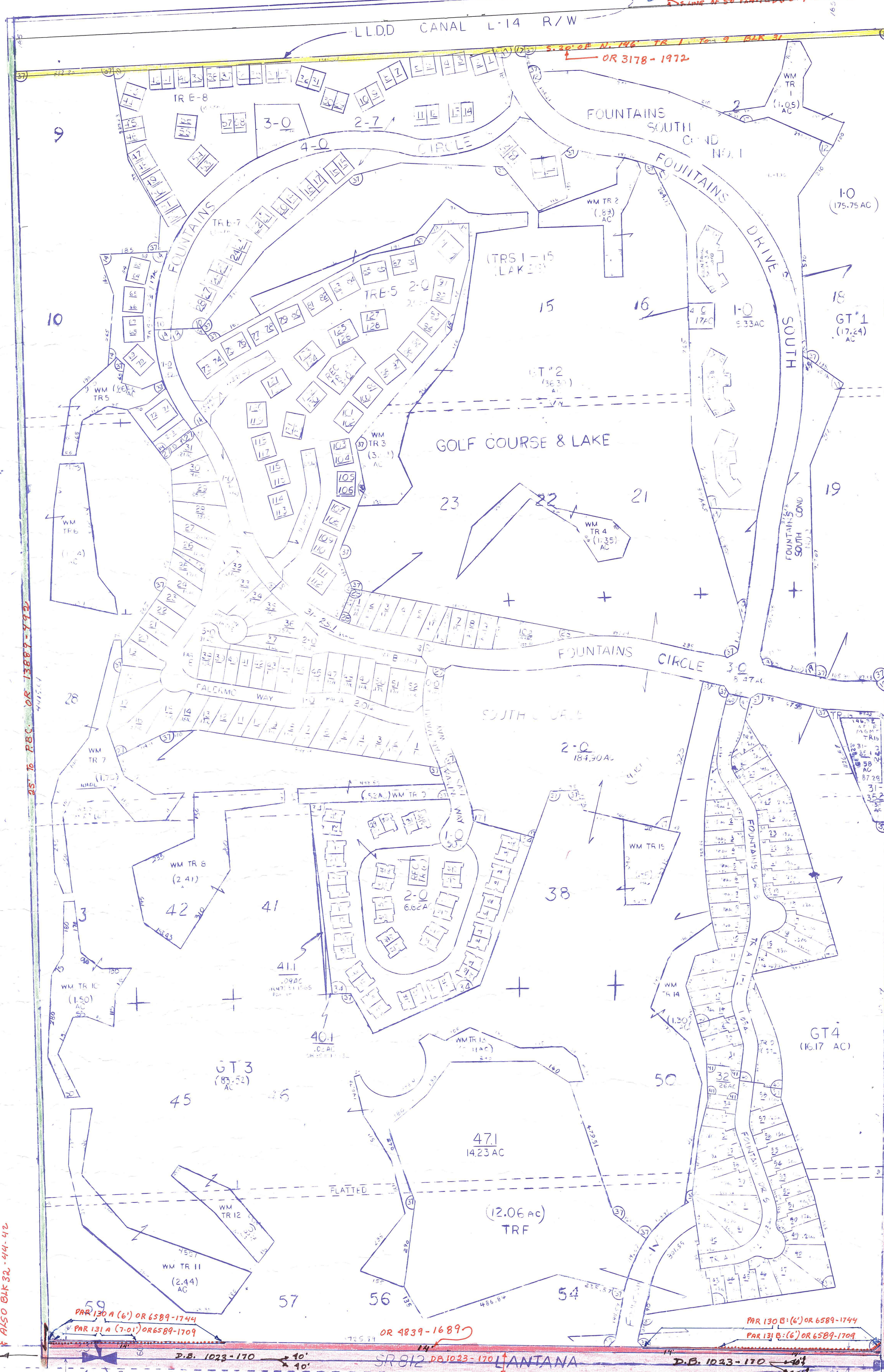


GOLF COURSE TRACT
SUB. 10, IS CODED IN
42-44-30-SEC 27

GOLF COURSE TRACT



LANTANA RD.
SOUTH 40' OF S.E. 1/4 SEC. 34; DISPOSED
TO D.O.T. AS PER D.B. 983-411
SEE SEC. 35

PARCEL RESTRICTED
PER: UNITY OF TITLE

- NE01 SPRINGHILL PL 1 (1978) PB35P170
- NE02 SPRINGHILL PL 2 (1978) PB34P42
- SEC03 LEES CROSSING PL 1 (1978) PB41P3
- NE04 LEES CROSSING PL 1 (1978) PB41P3
- NE05 LEES CROSSING PL 2 (1978) PB42P1
- NE06 FOUNTAINS SOUTH TRS 1 & 2 (1982) PB43P33
- NE07 FOUNTAINS SOUTH TRS 1 & 2 (1982) PB43P33
- NE08 FOUNTAINS SOUTH TRS 1 & 2 (1982) PB43P33
- NE09 FOUNTAINS SOUTH TRS 1 & 2 (1982) PB43P33
- NE10 FOUNTAINS SOUTH TRS 1 & 2 (1982) PB43P33
- NE11 HOMES OF LEES CROSSING PL 1 (1978) PB41P3
- NE12 FOUNTAINS SOUTH TRS 1 & 2 (1982) PB43P33
- NE13 HOMES OF LEES CROSSING PL 1 (1978) PB41P3
- NE14 FOUNTAINS SOUTH TRS 1 & 2 (1982) PB43P33
- NE15 HOMES OF LEES CROSSING PL 1 (1978) PB41P3
- NE16 FOUNTAINS SOUTH TRS 1 & 2 (1982) PB43P33
- NE17 FOUNTAINS SOUTH TRS 1 & 2 (1982) PB43P33
- NE18 FOUNTAINS SOUTH TRS 1 & 2 (1982) PB43P33

NOTE: PALM BEACH FARMS PL 3
IS CODED 05' IN SEC. 27, 34 &
AND IS IN THE COUNTY (00)
(WR OF SEC)

- NE19 FOUNTAINS SOUTH TRS 1 & 2 (1982) PB43P33
- NE20 HOMES OF LEES CROSSING PL 1 (1978) PB41P3
- NE21 HOMES OF LEES CROSSING PL 1 (1978) PB41P3
- NE22 FOUNTAINS SOUTH TRS 1 & 2 (1982) PB43P33
- NE23 HOMES OF LEES CROSSING PL 1 (1978) PB41P3
- NE24 HOMES OF LEES CROSSING PL 1 (1978) PB41P3
- NE25 HOMES OF LEES CROSSING PL 1 (1978) PB41P3
- NE26 HOMES OF LEES CROSSING PL 1 (1978) PB41P3
- NE27 FOUNTAINS SOUTH TRS 1 & 2 (1982) PB43P33
- NE28 FOUNTAINS SOUTH TRS 1 & 2 (1982) PB43P33
- NE29 HOMES OF LEES CROSSING PL 1 (1978) PB41P3
- NE30 FOUNTAINS SOUTH TRS 1 & 2 (1982) PB43P33
- NE31 LANTANA HOMES PL 1 (1978) PB41P3
- NE32 LANTANA HOMES PL 2 (1978) PB42P1
- NE33 LANTANA HOMES PL 3 (1978) PB43P33
- SW34 FOUNTAINS SOUTH TRS 1 & 2 (1982) PB43P33
- NE35 LANTANA HOMES PL 1 (1978) PB41P3
- NE36 LANTANA HOMES PL 4 (1978) PB44P4
- ALL 37 FOUNTAINS SOUTH GOLF COURSE
SUB 37 COMB W/ SUB 17
SEE 38 LEE SQUARE (2) PB68P18
- SW39 ENCLAVE AT THE FOUNTAINS PL 2
(97) PB77P18
- SW40 ENCLAVE AT THE FOUNTAINS PL 1
(97) PB77P29
- SW41 ENCLAVE AT THE FOUNTAINS REPL
(2001) PB87P196

DB 1023-170 should
be for the 40' north
of the center line which
is the north Township
line

State Rd No. S-812 (Lantana Rd)
80' R/W per FDOT R/W Map
Sec No. 9353-151

See RP Book 2 Page 27
for CR 812 (Lantana Rd)

DB 1023-170 should
be for the 40' north
of the center line which
is the north Township
line

**Palm Beach County (County) makes no representation or
warrants whatsoever on the attached / enclosed
information reflected herein pertaining to easements,
rights-of-way, setback lines, reservations, agreements,
and other similar matters. The information provided
herein should not be relied upon by the requesting party
to confirm the existence / non-existence of facts
contained herein.**

PALM BEACH COUNTY
GARY R. NIKOLITS
PROPERTY APPRAISER

RGE	TWP	SEC	AERIAL
42	44	34	NO63-20

SCALE 1" = 200'
DRAWN BY
UPDATED