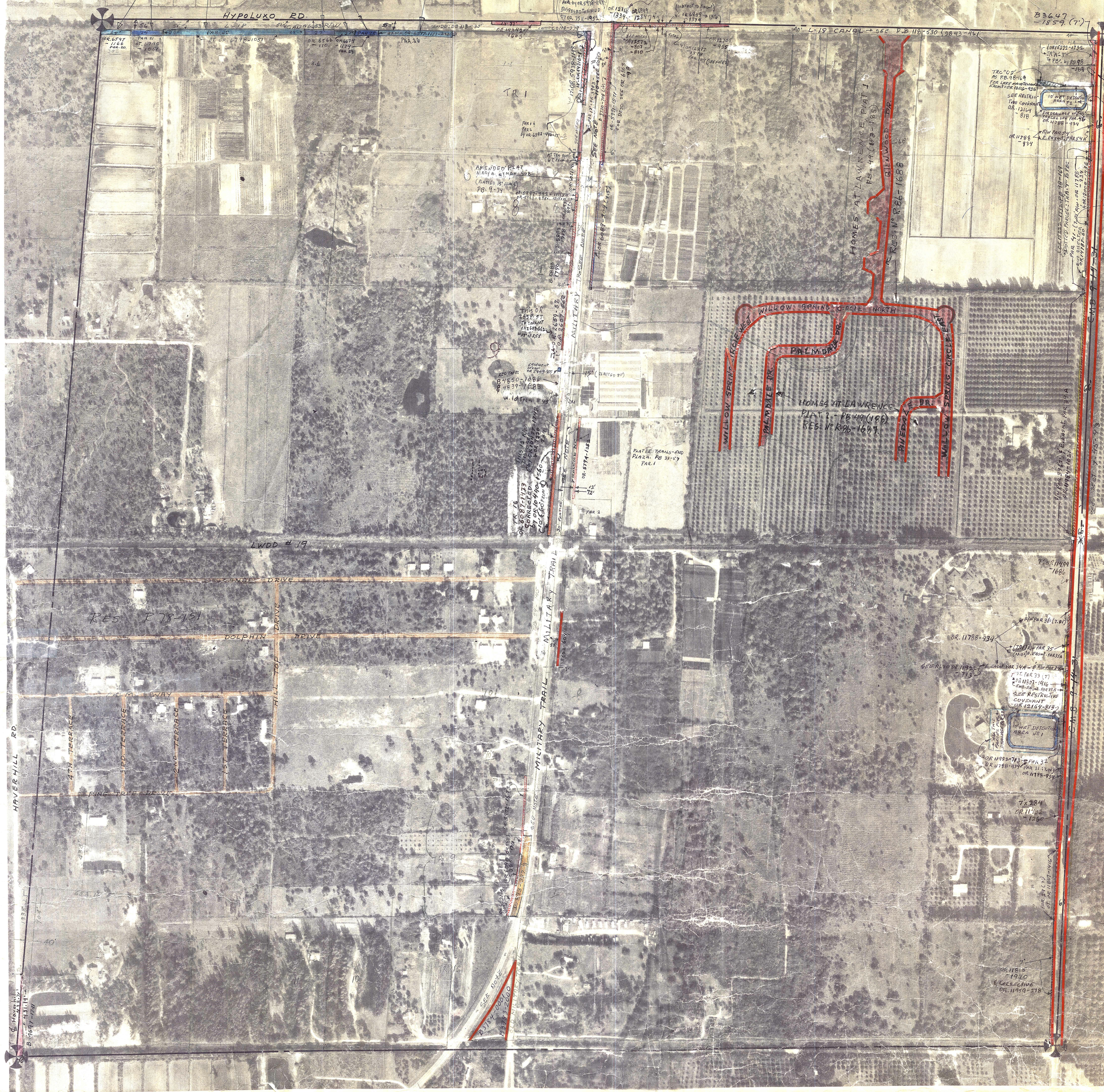


DISPOSED PARCELS 10-21-22-23-24-25-26-29  
To LWDD by OR 1511-1953

SEE NOTES

N



ORDINANCE 86-7  
Amending City of  
BONTON BEACH  
w/2 of R/W of  
LAWRENCE RD.

**Palm Beach County (County)**  
makes no representation or  
warrants whatsoever on the  
attached / enclosed  
information reflected herein  
pertaining to easements,  
rights-of-way, setback lines,  
reservations, agreements, and  
other similar matters. The  
information provided herein  
should not be relied upon by  
the requesting party to confirm  
the existence / non-existence  
of facts contained herein.

NOTE  
- MILITARY TR:  
BCC DISPOSED 100' (50' from E)  
To D.O.T by D. 909-208

- HypOLUXO RD:  
- FOR OR 1278-1334 (PAR 102) SEE  
P. 250 OR 1287-1338 (PAR 102)  
LAWRENCE PL 1282-1303 & PAR 104  
- FOR OR 12372-807 (PAR 102) SEE ALSO  
& OR 12372-810 (PAR 103) OR 12877  
1698  
PAR 104

- MILITARY TR = HWY 1 IN TRI:  
R/W AS PER OR 3903-115 (17)  
WAS CORRECTED PER OR 13727  
P. 272, THIS WAS MADE TO  
MODIFY A CORRECTIVE DEED AS  
OR 13495-1797 & ALSO OR 3709-115  
SEE CORRECTIVE HWY W.D. OR 13707  
- 390

NOTE:  
NOT TO BE REPRODUCED IN  
ANY FORM EXCEPT BY EXPRESS  
WRITTEN CONSENT FROM THE  
PALM BEACH COUNTY  
ASSESSOR.  
Information shown hereon is  
compiled from the best available  
sources and CANNOT be used  
for surveys or land transfers of  
any type.

AMENDED PART OF SEC 10-11-12  
P. 274

PALM BEACH COUNTY			
36			
DAVID L. REID County Assessor			
RGE	TYP	SEC	AERIAL
42	45	12	No. 650
SCALE		1"=200'	