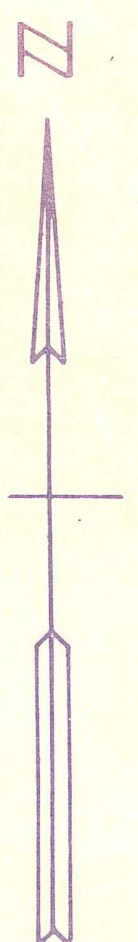


NOTE: FOR 28' LWD North of Tr 1<sup>st</sup> B, Blk 58:  
SEE DEED OUT OF LWD IN DB 872-880

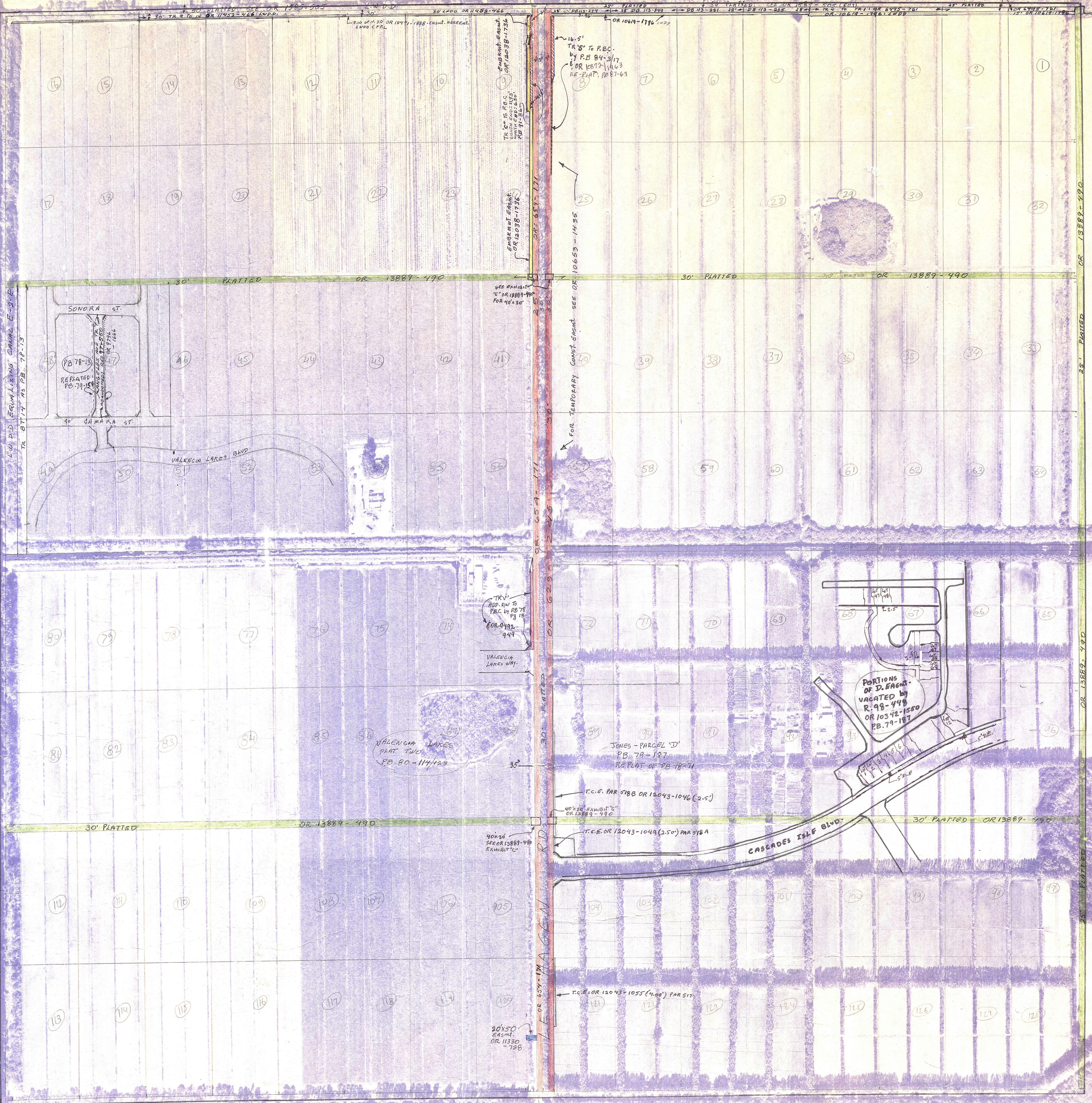
TR 112  
SEE ASSO D. 113-217 (LWD)



**Palm Beach County (County) makes no representation or warranties whatsoever on the attached / enclosed information reflected herein pertaining to easements, rights-of-way, setback lines, reservations, agreements, and other similar matters. The information provided herein should not be relied upon by the requesting party to confirm the existence / non-existence of facts contained herein.**



WEST PENINSULAR TITLE COMPANY  
V. PALM BEACH COUNTY - SEE  
OR 5608-1286, ATTACHED TO PALM  
BEACH FARMS CO PL. N'S MAP,  
FOR RD 94W IN BLK 58.



NOTE:  
NOT TO BE REPRODUCED IN  
ANY FORM EXCEPT BY EXPRESS  
WRITTEN CONSENT FROM THE  
PALM BEACH COUNTY  
PROPERTY APPRAISER  
Information shown hereon is com-  
piled from the best available sources  
and CANNOT be used for survey or  
land transfers of any type.

**PALM BEACH COUNTY**  
S. 39  
DAVID L. REID  
PROPERTY APPRAISER

RGE	TWP	SEC	BLK	AERIAL
42	45	33	58	NO 62-11

SCALE 1"=200'  
DRAWN BY:



PLIGHT DATE: JANUARY 18, 1981