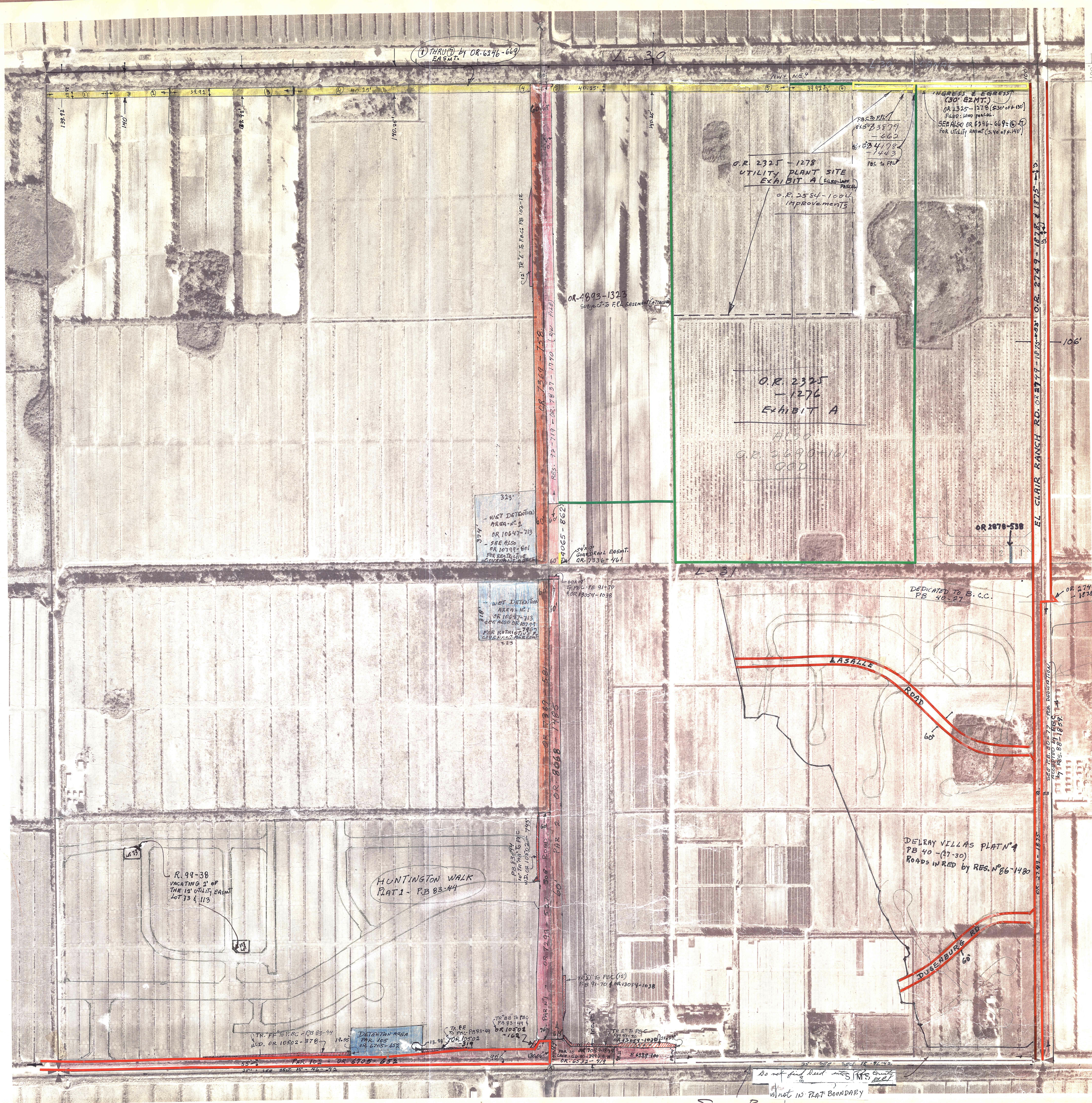


Palm Beach County (County) makes no representation or warrants whatsoever on the attached / enclosed information reflected herein pertaining to easements, rights-of-way, setback lines, reservations, agreements, and other similar matters. The information provided herein should not be relied upon by the requesting party to confirm the existence / non-existence of facts contained herein.



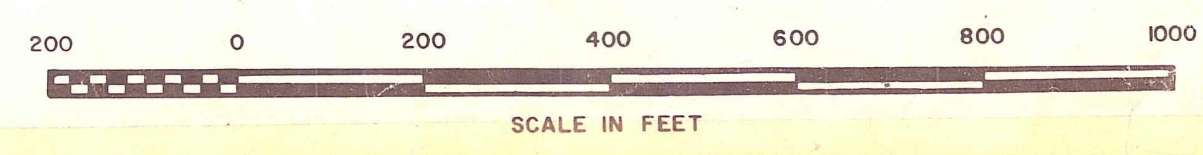
EL CLAIR Ranch Rd. CONTAINED IN Sec. 11 of PLAT 60 83-27 - PLAT II WITH ANY 20-97

NOTE:

NOT TO BE REPRODUCED IN ANY FORM EXCEPT BY EXPRESS WRITTEN CONSENT FROM THE PALM BEACH COUNTY TAX ASSESSOR. Information shown hereon is compiled from the best available sources and CANNOT be used for surveys or land transfers of any type.

PALM BEACH COUNTY
S-44

SEC.	TWP.	RGE.
10	46	42
1" = 200' No. 549		



SIMS RD. - LAKE IDA RD. Aerial Photo Date - JAN. 22, 1968