

Palm Beach County (County) makes no representation or warrants whatsoever on the attached / enclosed information reflected herein pertaining to easements, rights-of-way, setback lines, reservations, agreements, and other similar matters. The information provided herein should not be relied upon by the requesting party to confirm the existence / non-existence of facts contained herein.

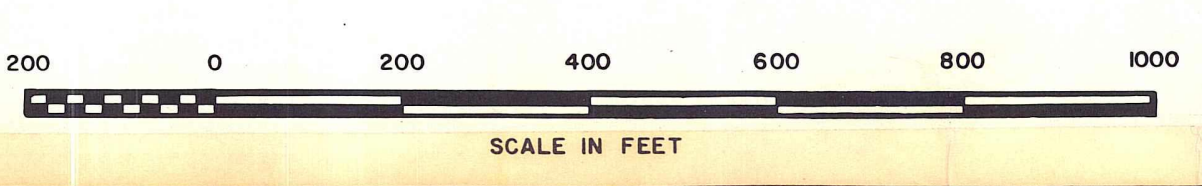
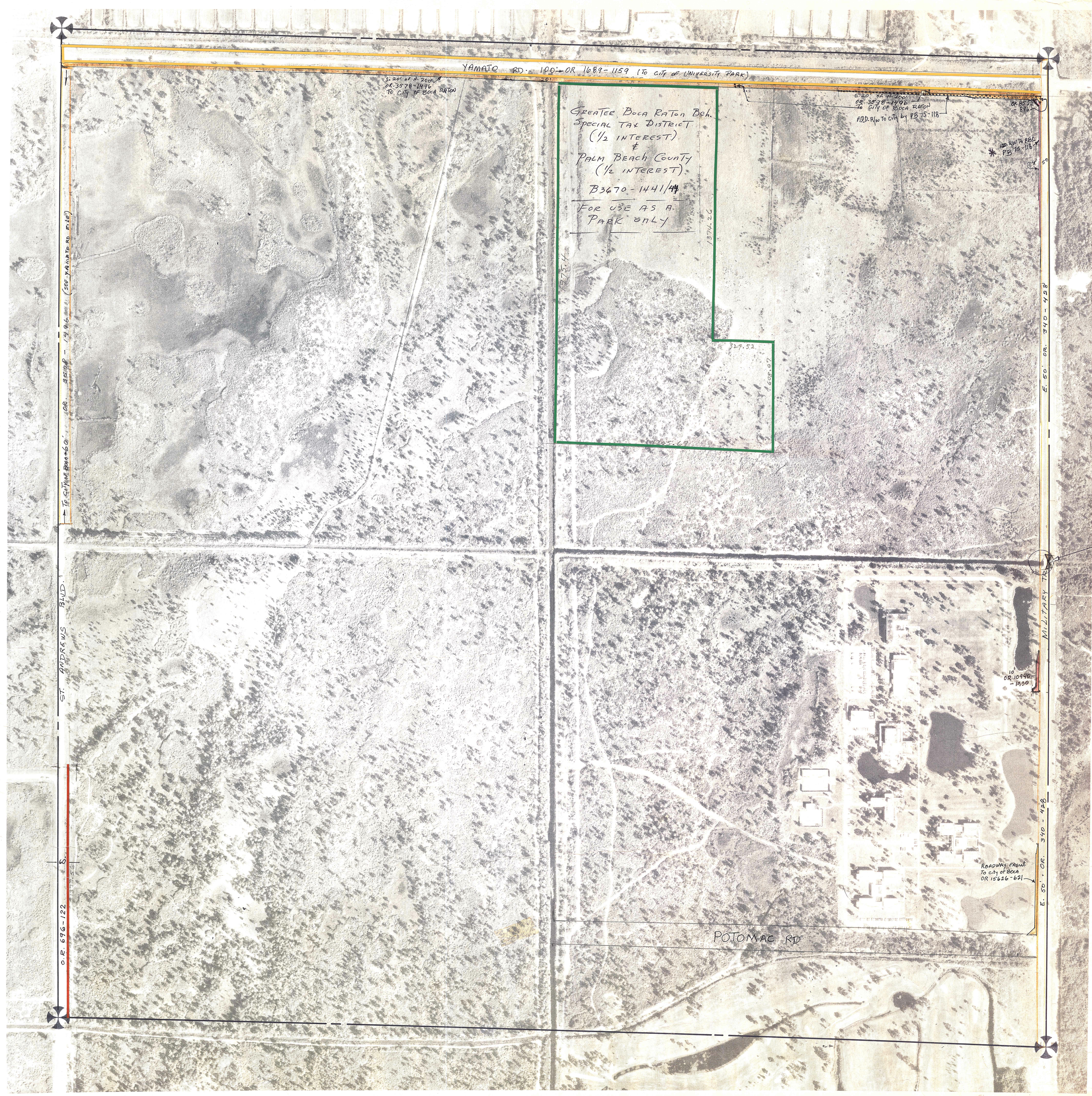
NOTE:
FOR 40'x100'
R/W OVER CANAL #43
SEE OR 498-259

NOTE:
NOT TO BE REPRODUCED IN
ANY FORM EXCEPT BY EXPRESS
WRITTEN CONSENT FROM THE
PALM BEACH COUNTY
ASSESSOR.
Information shown hereon is
compiled from the best available
sources and CANNOT be used
for surveys or land transfers of
any type.

PALM BEACH COUNTY
S. 50
DAVID L. REID
County Assessor

RGE	TWP	SEC	AERIAL
42	47	11	No. 583

SCALE 1"=200'



Aerial Photo Date — 10-23-70

BROCKWAY, OWEN & ANDERSON ENGINEERS, INC.
ENGINEERS PLANNERS SURVEYORS
WEST PALM BEACH, FLORIDA