

Palm Beach County (County) makes no representation or warranties whatsoever on the attached / enclosed information reflected herein pertaining to easements, rights-of-way, setback lines, reservations, agreements, and other similar matters. The information provided herein should not be relied upon by the requesting party to confirm the existence / non-existence of facts contained herein.

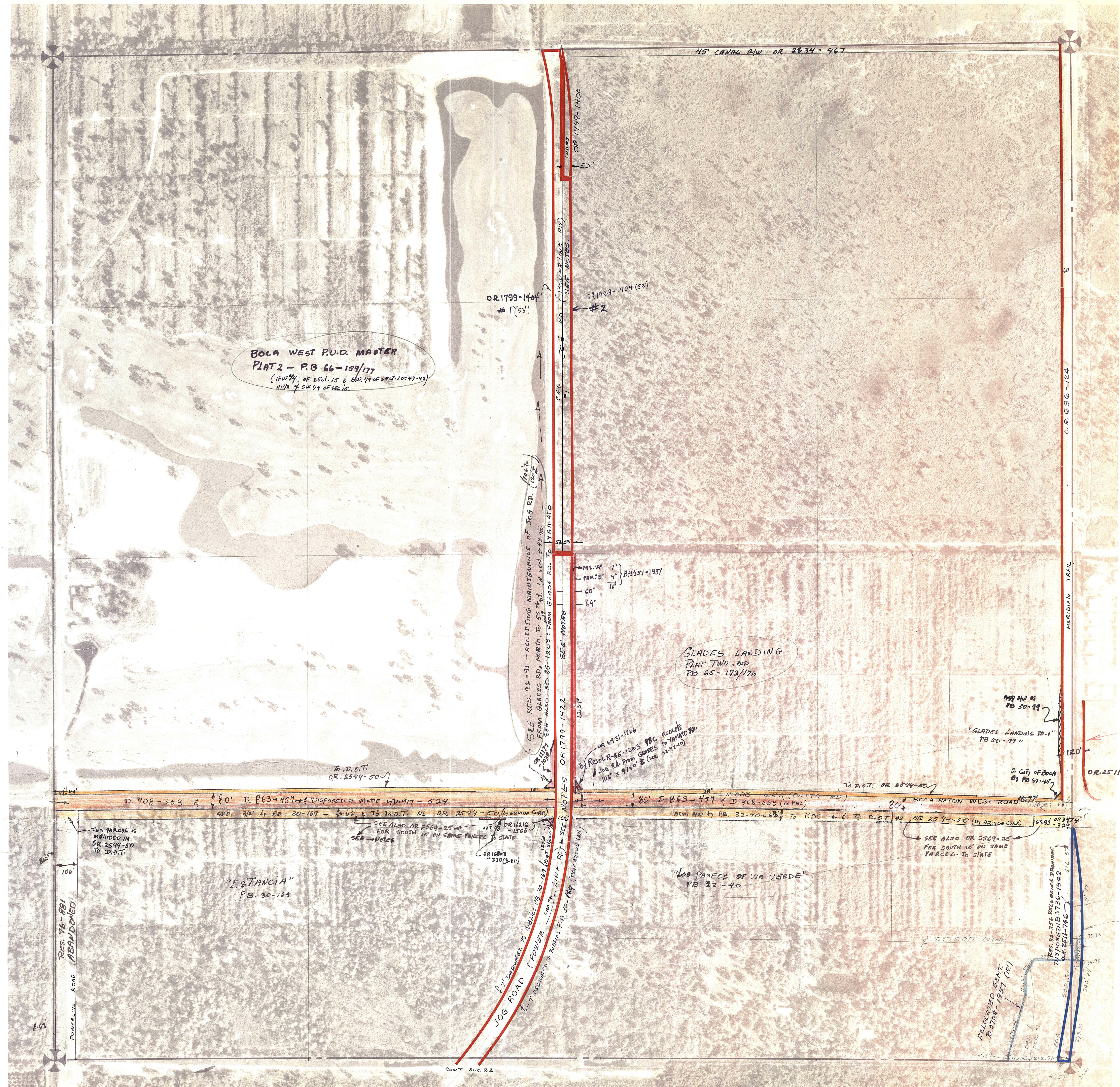
NOTES:

JOG RD: SEE NOTES IN SECT. 3-47-42

NOTE: GLADES RD: S.R.W.
 - 20' EASMT. WAS DEEDED TO CITY OF BOCA RATON BY OR 2107-1406, THE N-10' OF THIS 20' EASMT. OVERLAPS THE SOUTH SIDE OF GLADES RD. AS OR 2544-50,
 - CITY OF BOCA CONVEYED THE 10' OVERLAPPING PARCEL TO D.O.T. BY OR 2569-25(6) RETAINING 10' FOR EASMT. IN SECT. 15, SW 1/4 SEC. 14, (SOUTH OF R/W LINE OF GLADES)

JOG RD: FOR IMP: SEE OR 2060-PB 421 TO LINDA - THIS O&ED OVERLAPS 11' 13" ON JOG RW AS OR 1799-1404 IN NE 1/4 OF SW 1/4 OF SEC. 15

NOTE:
 NOT TO BE REPRODUCED IN ANY FORM EXCEPT BY EXPRESS WRITTEN CONSENT FROM THE PALM BEACH COUNTY ASSESSOR.
 Information shown hereon is compiled from the best available sources and CANNOT be used for surveys or land transfers of any type.



BOCA WEST P.U.D. MASTER PLAT 2 - P.B. 66-159/177
 (NW 1/4 of sect. 15 & SW 1/4 of sect. 10 & 11 & 12 of SW 1/4 of sec. 15)

GLADES LANDING PLAT TWO - P.B. 65-172/176

"ESTANCIA" P.B. 30-164

"108 PASEOS OF VIA VERDE" P.B. 32-40

SEE RES. 92-91 - ACCEPTING MAINTENANCE OF JOG RD. (120' WIDE) FROM GLADES RD. NORTH TO 55' THRU (1/2 SEC. 3-47-42) SEE ALSO RES. 85-1203 FROM GLADES RD. TO YAMATO

OR 6431-1760
 BY RESOL. R-85-1203 PBC ACCEPTS JOG RD. FROM GLADES TO YAMATO 108' x 9.140' (SEE 4247-10)

THIS PARCEL IS INCLUDED IN OR 2544-50 TO D.O.T.

SEE ALSO OR 2569-25 FOR SOUTH 10' ON SAME PARCEL TO STATE

RELOCATED EASMT. BY 3783-1957 (P)

CONT. SEC. 22