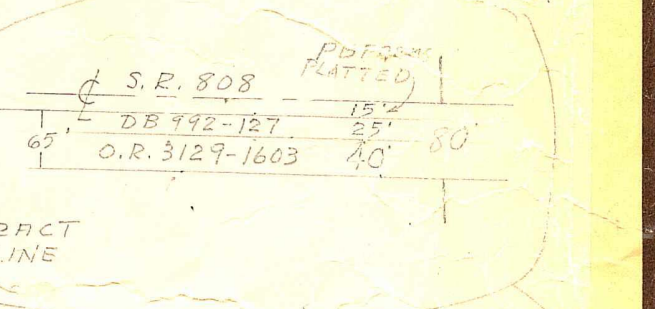


**Palm Beach County (County) makes no representation or warranties whatsoever on the attached / enclosed information reflected herein pertaining to easements, rights-of-way, setback lines, reservations, agreements, and other similar matters. The information provided herein should not be relied upon by the requesting party to confirm the existence / non-existence of facts contained herein.**

**NOTE:**

See BLK. 76  
 FOR ADDITIONAL  
 LYONS ROAD  
 NORTH OF ...  
 WEST PENINSULAR TITLE COMPANY  
 VS. PALM BEACH COUNTY; SEE OR 5808  
 ATTACHED TO PALM BEACH - 1286.  
 FARMS CO. PL. N°3 MAP, FOR  
 RD. RW IN BLK 77.



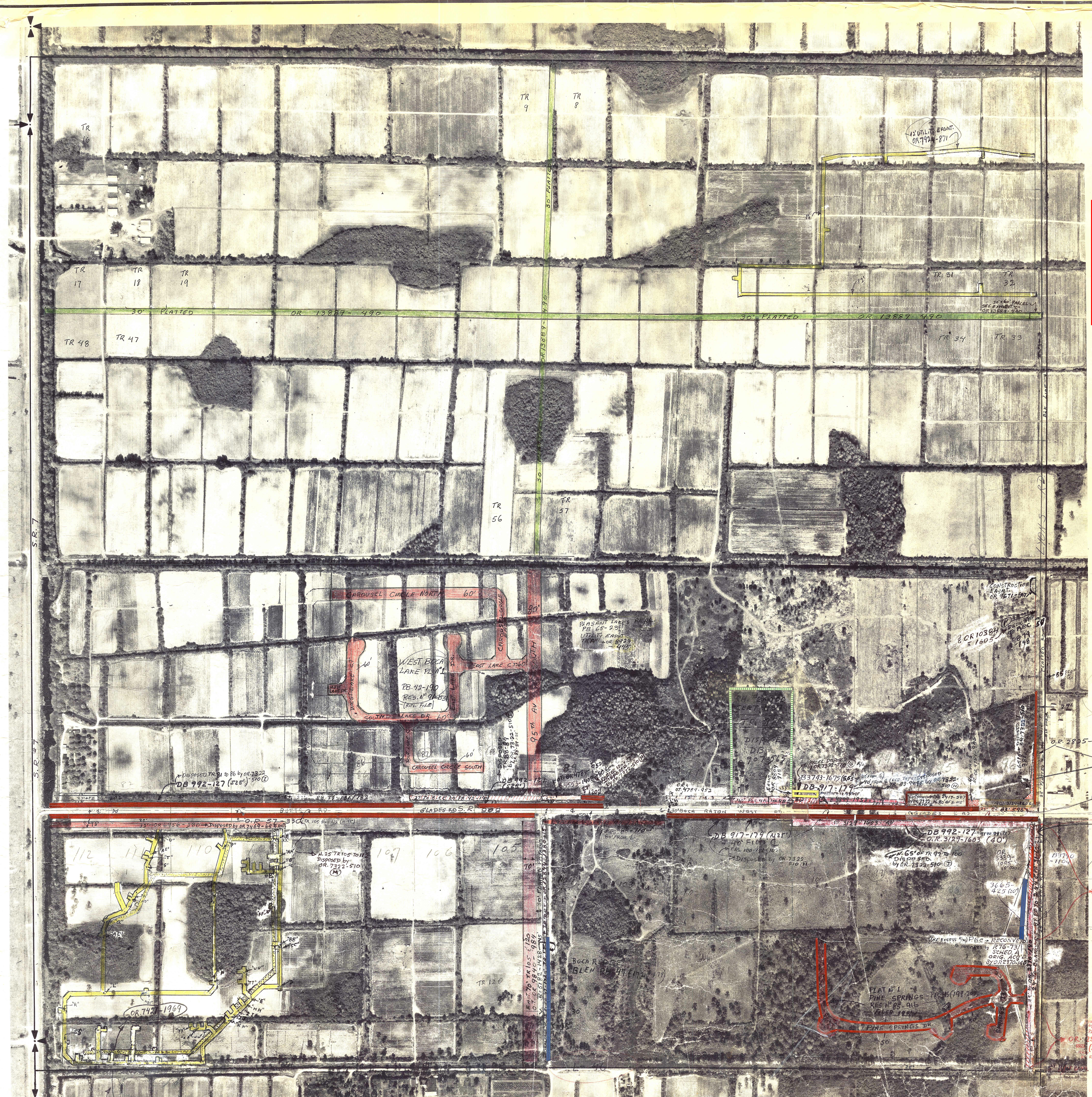
OR 2805-18  
 PBC CONVEYED BY OR 6943-229  
 TO D. OTT, TRUSTEES  
 100% OF 2825-18 (39') ALSO DISPOSED BY OR 7292-127  
 - OR 3757-1606 (40') ALSO DISPOSED BY OR 7292-127  
 - OR 6578-281 ALSO DISPOSED BY OR 7292-127

OR 2370-140-2  
 1/25' OF E. 1/4' OF R. 47 S 128  
 (PORTION OF THIS RW DISPOSED  
 BY OR 4289-1025 (50'))

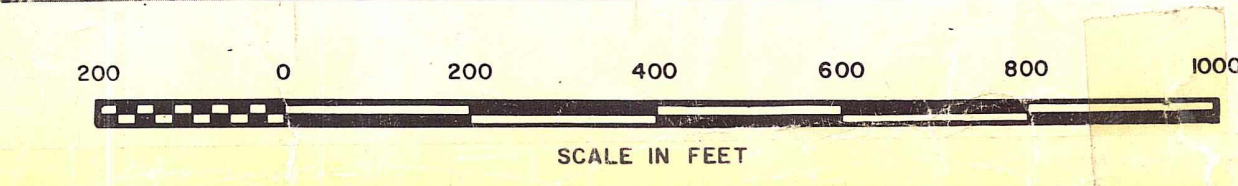
**NOTE:**  
 NOT TO BE REPRODUCED IN  
 ANY FORM EXCEPT BY EXPRESS  
 WRITTEN CONSENT FROM THE  
 PALM BEACH COUNTY TAX  
 ASSESSOR.

Information shown herein is  
 compiled from the best available  
 sources and CANNOT be used  
 for surveys or land transfer of  
 any type.

**PALM BEACH COUNTY**  
 SEC 18 & S. 49 - (SEC. 18)  
 SEC 19 & S. 52 - (SEC. 19)  
 BLOCK TWP. RGE  
 171 47 42  
 1" = 200' No. 177



30' UTILITY ESMT (WATERLINE) FILED: 49  
 30' UTILITY ESMT. (SEWER)



BOCA LYONS PLAZA IN  
 SE 1/4 OF SEC 18 & NE 1/4  
 OF SEC 19 LYING WEST  
 OF LYONS RD  
 Aerial Photo Date - FEB. 15 1968  
 UTILITY BASINS, 33' x 30', 12' x 30'  
 WATER DISTRIBUTION LINES 4"  
 SANITARY COLLECTION 36" x 24"