

SEE OR 5608-1286 ATTACHED TO
PALM BEACH PARMS CO. #3 MAP,
FOR 30 PLATTED RD. BLK 81

SEE BLK. 78
FOR DRAINAGE EASMT.

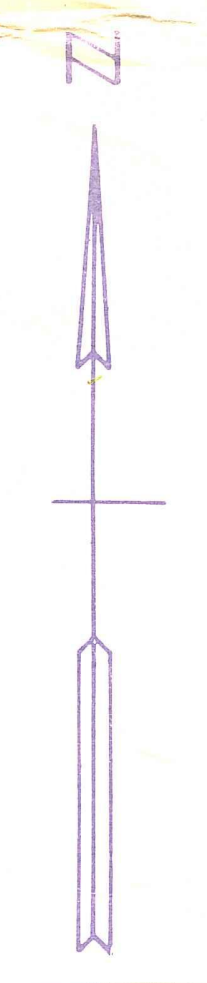
BLK 78

PALMETTO

C.R. 3731-28

B3756-436

3665-1981



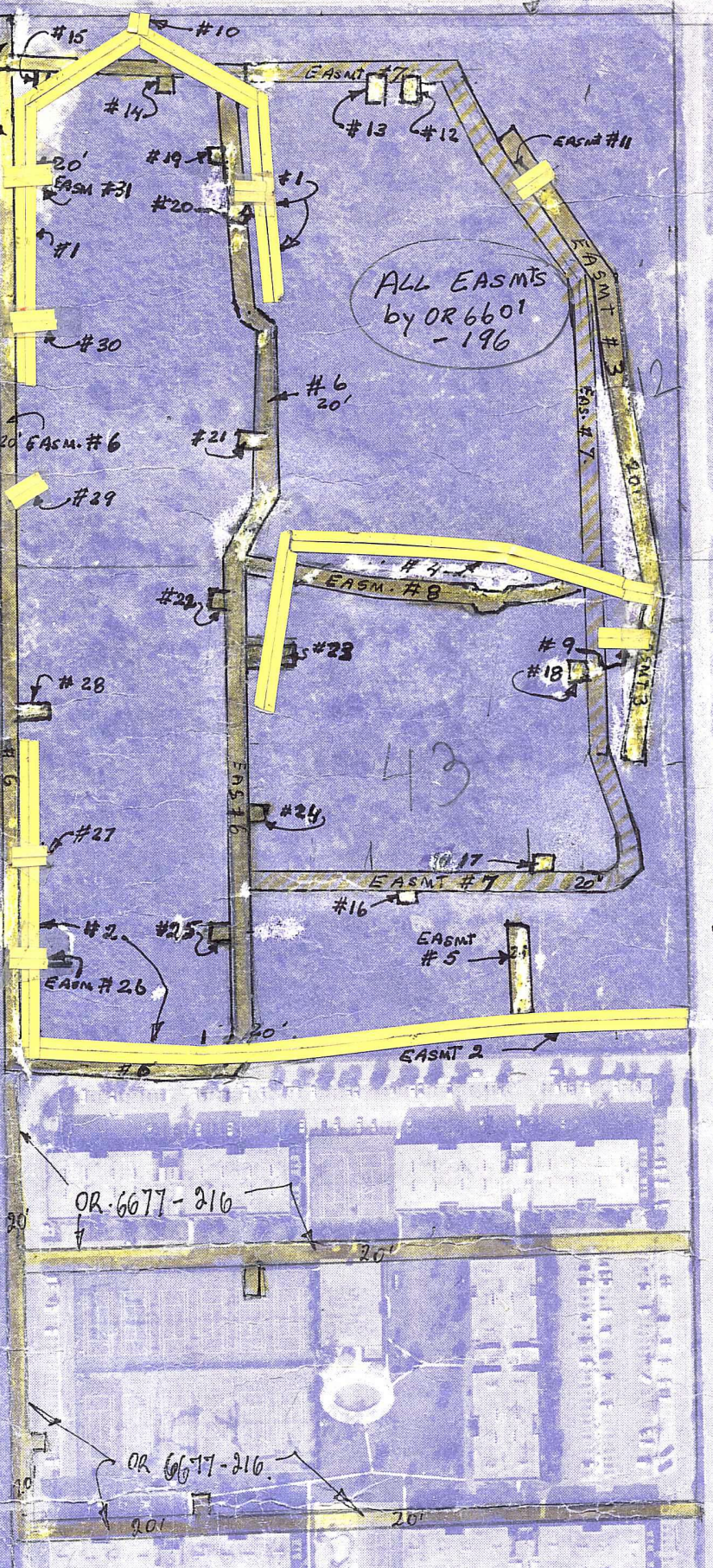
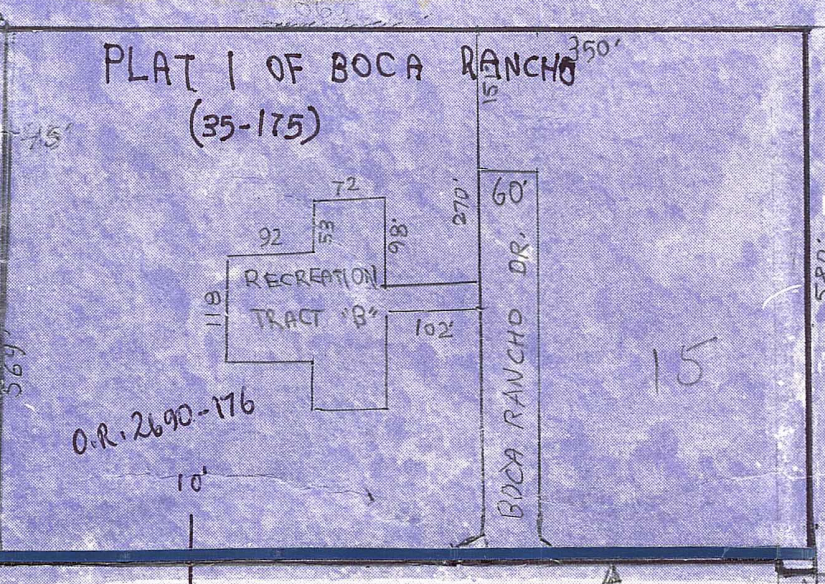
5- 5' GUY WIRE EZMNTS
ALONG SW 57TH AVE. (FOR FPL)
B3758-1388

P.B. County Prop.
by Plat # 7+8 Sandalfoot Cove
P.B. 30-225-28

Recreation Areas B thru G
All Streets
marginal access rds.
CANAL A

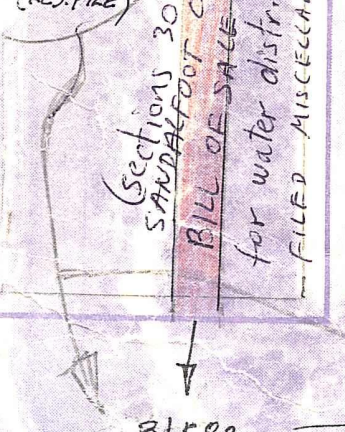
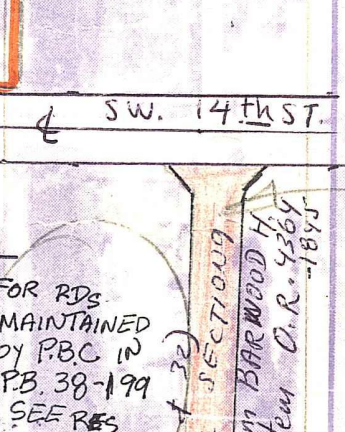
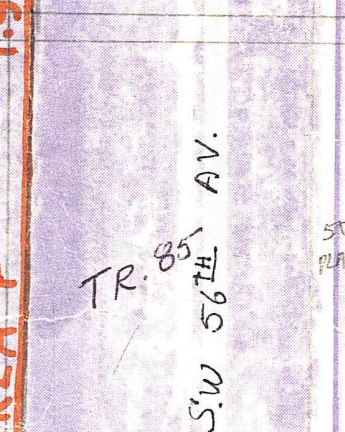
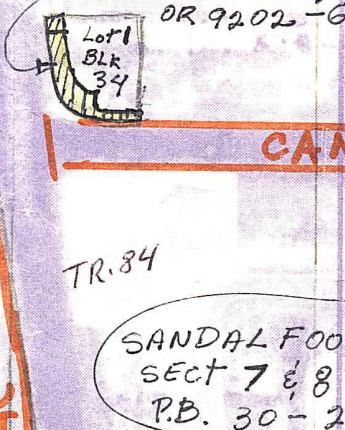
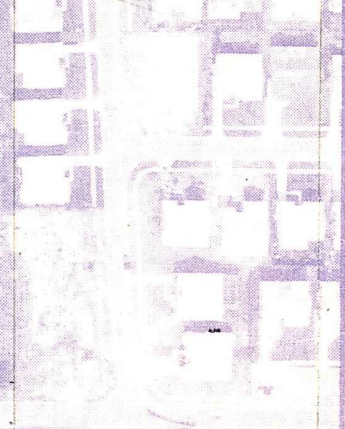
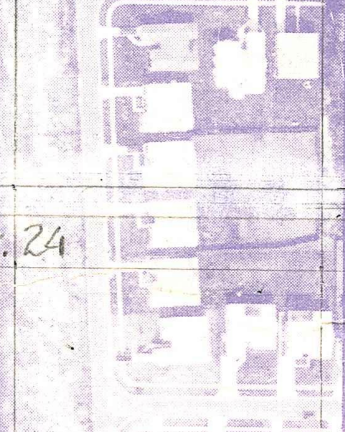
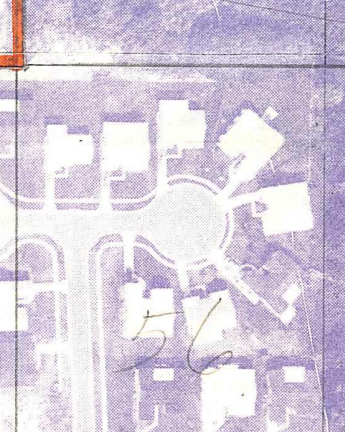
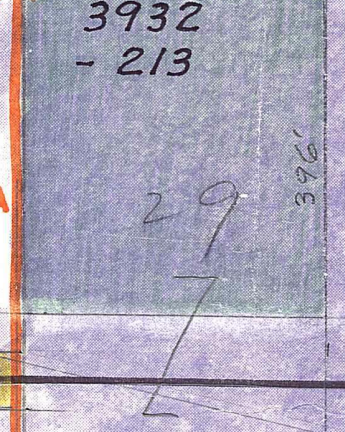
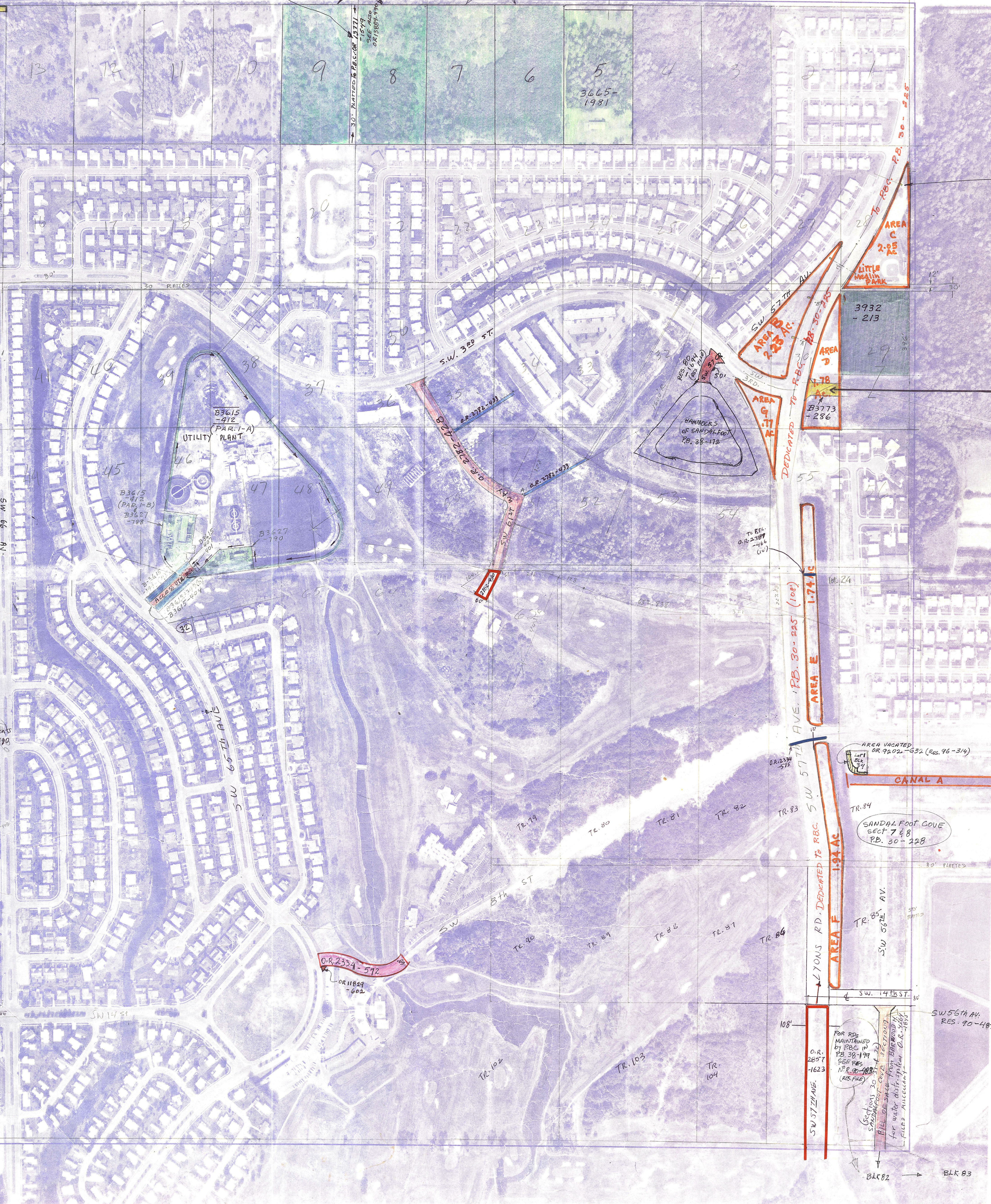
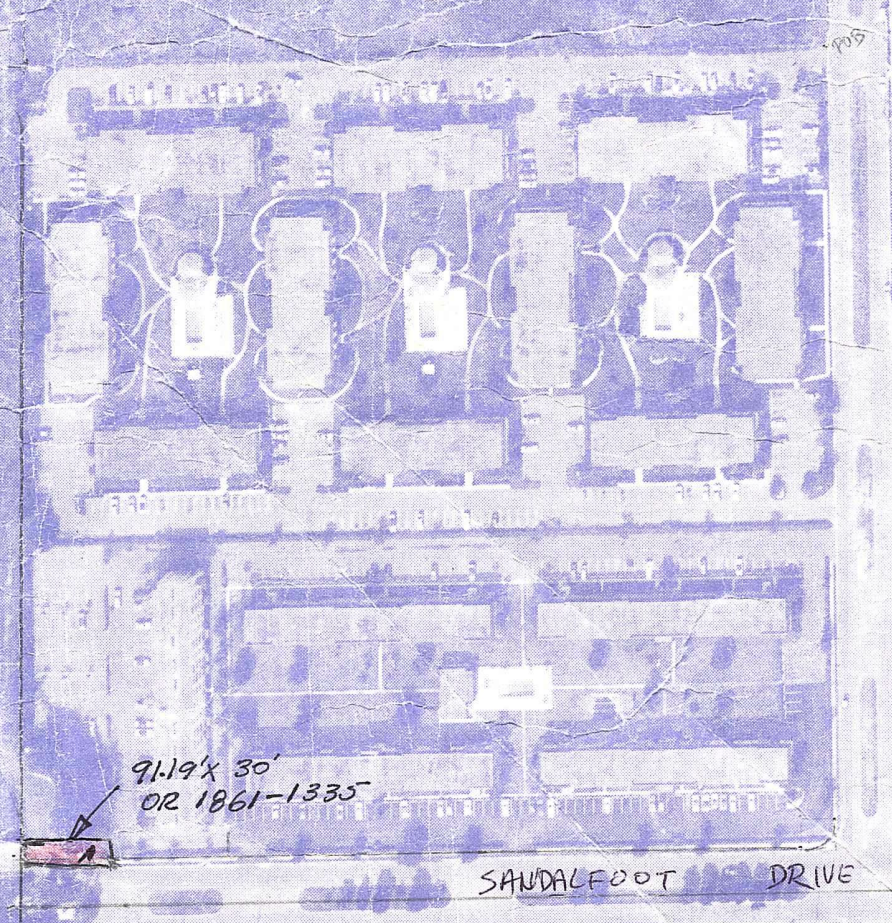
County
To Typize - Easement
Ingress + Egress
+ utility purposes

**Palm Beach County (County) makes
no representation or warranties
whatsoever on the attached /
enclosed information reflected herein
pertaining to easements, rights-of-
way, setback lines, reservations,
agreements, and other similar
matters. The information provided
herein should not be relied upon by
the requesting party to confirm the
existence / non-existence of facts
contained herein.**



County has received Water and Sewer components
from MAP ROSEWOOD INC. MISCELLANEOUS B4235-999

BLK 81
P.B. 30-225-28



NOTE:

NOT TO BE REPRODUCED OR
ANY FORM EXCEPT BY EXPRESS
WRITTEN CONSENT FROM
PALM BEACH COUNTY
PROPERTY APPRAISER
Information shown herein is based
on the best available information
and CANNOT be used for advertising
or land transfers of any type.

PALM BEACH COUNTY
5.52
DAVID L. REID
PROPERTY APPRAISER

HGE	TWP	SEC	BLK
42	47	30	81

SCALE: 1"=200'
DRAWN BY:

