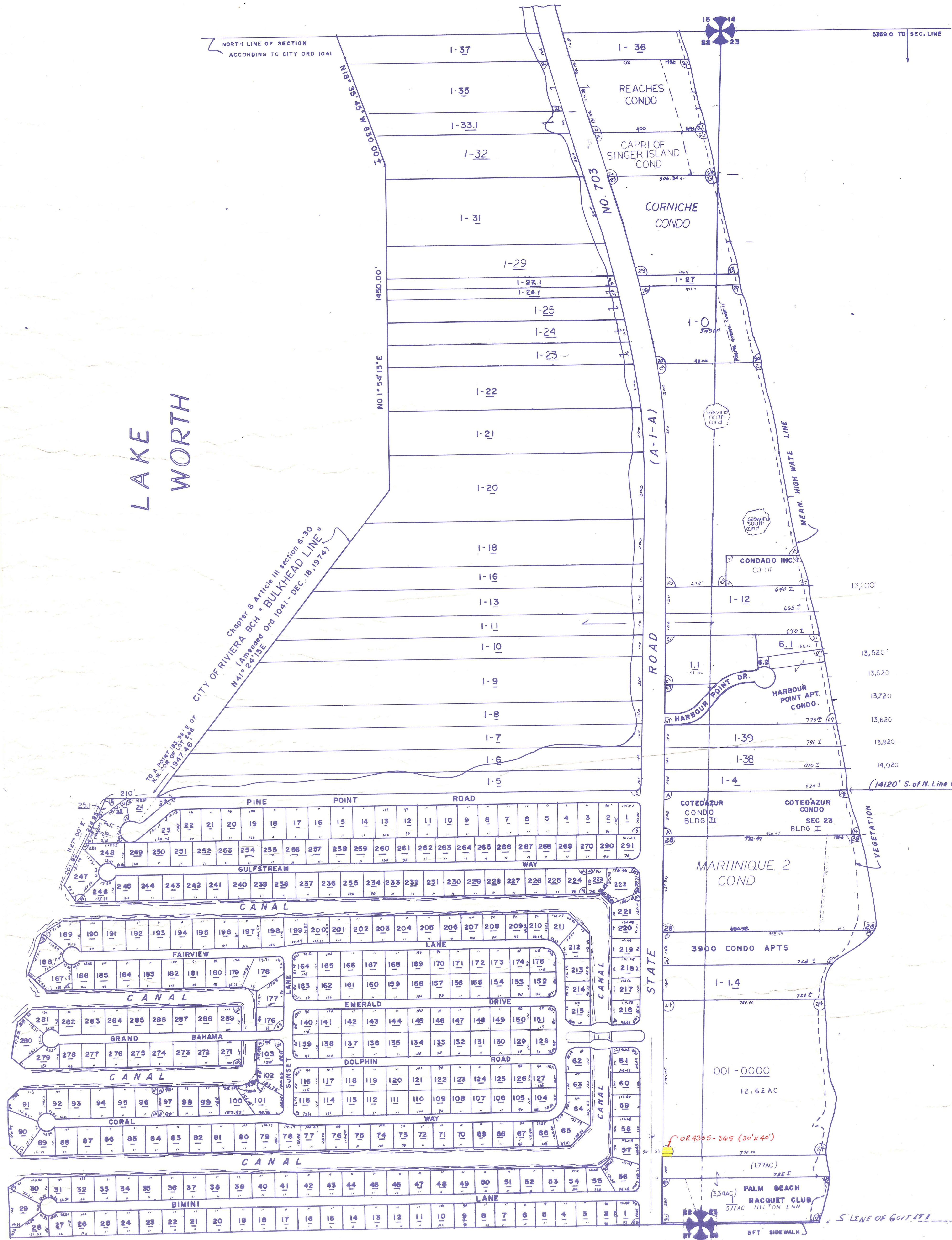


Palm Beach County (County) makes no representation or warranties whatsoever on the attached / enclosed information reflected herein pertaining to easements, rights-of-way, setback lines, reservations, agreements, and other similar matters. The information provided herein should not be relied upon by the requesting party to confirm the existence / non-existence of facts contained herein.

LAKE WORTH



SEC 22
ALL Gov LT 1

SE 01 HARBOUR POINT SUB	PB26 P71
SW 02 PALM BEACH ISLES NO. 1	PB25 P104
SW 03 " " " " " " " " " " " "	PB26 P39
SW 04 PALM BEACH ISLES NO. 3	PB27 P8
SE 05 PALM BEACH RACQUET CLUB	PB27 P88
SW 06 PALM BEACH ISLES	PB27 P240
AMND NO. 2 REPL	
SE 07 HARBOUR POINT APT. CONDO	
SW 08 PALM BEACH ISLES NO. 4	PB28 P156
SW 09 3900 CONDO APTS	
NE 10 WATERSIDE II	PB29 P235
NE 11 WATERSIDE III	PB29 P236
NE 12 WATERSIDE IV	PB29 P237
NE 13 AQUARIUS II	PB30 P2
SE 14	
SE 15 PINE POINT	PB30 P163
SE 16 PINE POINT LOTS	REPLAT PB32P136 (1878)
SE 17 CORNICHE (1988)	
SE 18 WATERSIDE III REPLAT (1981)	PB37 P17
SE 19 WHITEHAWK TRACT (1982)	PB39 P193
NE 20 BACCARAT (1982)	PB42 P166
NE 21 REACHES CONDO (1982)	PB43 P137
NE 22 CAPRI (1988) TAKEN NEW PLAT	
NE 23 CORNICHE CONDO (1983)	PB44 P106
SE 24 PLAT OF COUNTY PARK (1984)	PB46 P78
NE 25 SEAWINDS CONDO (1984)	
NE 26 CAPRI OF SINGER ISLAND COND (86)	
NW 27 CONDADO INC CO-OF	
SE 28 MARTINIQUE 2 COND (87)	

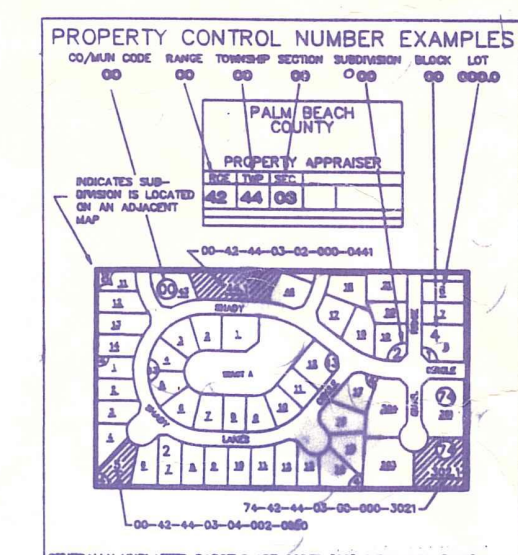
SEC 23

14 COTED'AZUR CONDO BLDG'S I & II

NOTE:
ALL OF SECTION 22 & 23 ARE CODED IN RIVIERA BEACH (56)

ATLANTIC OCEAN

NOTE:
NOT TO BE REPRODUCED IN ANY FORM EXCEPT BY EXPRESS WRITTEN CONSENT FROM THE PALM BEACH COUNTY PROPERTY APPRAISER



B-12 A-12
PALM BEACH COUNTY
N-16
PROPERTY APPRAISER

RGE	TWP	SEC	AERIAL
43	42	22/23	NO 70-80
SCALE	1" = 200'		
DRAWN BY	E. KESHIAN 8-18-78		
UPDATED	5-17-88		