

Palm Beach County (County) makes no representation or warranties whatsoever on the attached / enclosed information reflected herein pertaining to easements, rights-of-way, setback lines, reservations, agreements, and other similar matters. The information provided herein should not be relied upon by the requesting party to confirm the existence / non-existence of facts contained herein.

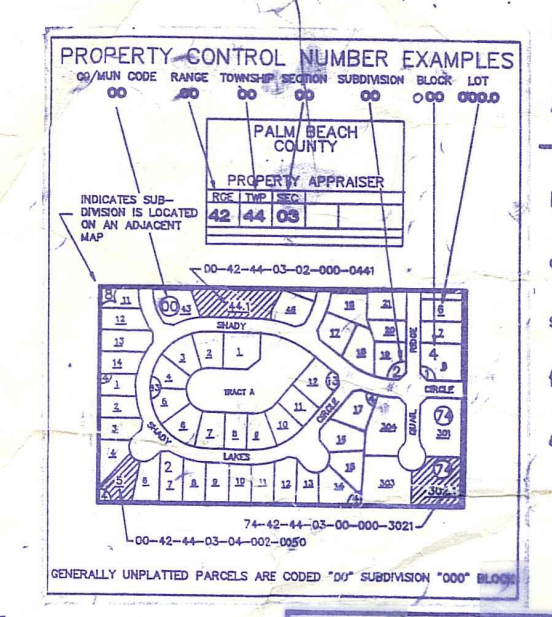
- NE 01 PALM BEACH BUSINESS PARK PB29 P201
- SW 02 SPENCER LAKES PL. NO. 1 PB33 P118 (1978)
- SW 03 SPENCER LAKES PLAT 2 (1979) PB36 P29
- SE 04 SIL FIR TRACT (980) PB39 P179
- NE 05 PALM BEACH BUSINESS PLAZA CONDO (88) PB50 P11
- SE 06 CONGRESS CROSSINGS (85) PB50 P11
- NE 07 PALM BEACH MEDICAL PLAZA CONDO (1985) PB50 P11
- NE 08 VILLAGE PROMENADE PB51 P20 (F&B)
- NE 09 CHARTER CENTER CONDO (1930) PB50 P11
- NW 10 NORTHPOINT (88) PB55 P156
- TAKEN BY 11 PRESIDENTIAL SQUARE CORPORATE PARK (83) PB57 P12
- SW 12 METROCENTRE CORP PARK (89) PB61 P10
- SE 13 MAJESTIC PLAZA CONDO (90) PB61 P10
- E 1/2 14 CONGRESS CROSSINGS REPL LTS 1 & 15 (91) PB63 P46

NOTES
 - CONGRESS AVE. FROM ONE-SHORE TO 15TH ST.
 SEE RES 85-1067 FOR AGREEMENT B/W P.B.C. & CITY OF W.P.B. BY TRANSFERRING TO COUNTY ENGINEERING SERVICES AND RESPONSIBILITIES WITHIN THE MUNICIPAL BOUNDARIES OF CITY OF W.P.B.

★ NEW DDC NO. 59 (1982)
 SEE: SW 471-23-01-14

NOTE:
 ALL OF SECTION 15 IS IN MUN. (74) MUNICIPALITY OF WEST PALM BEACH.

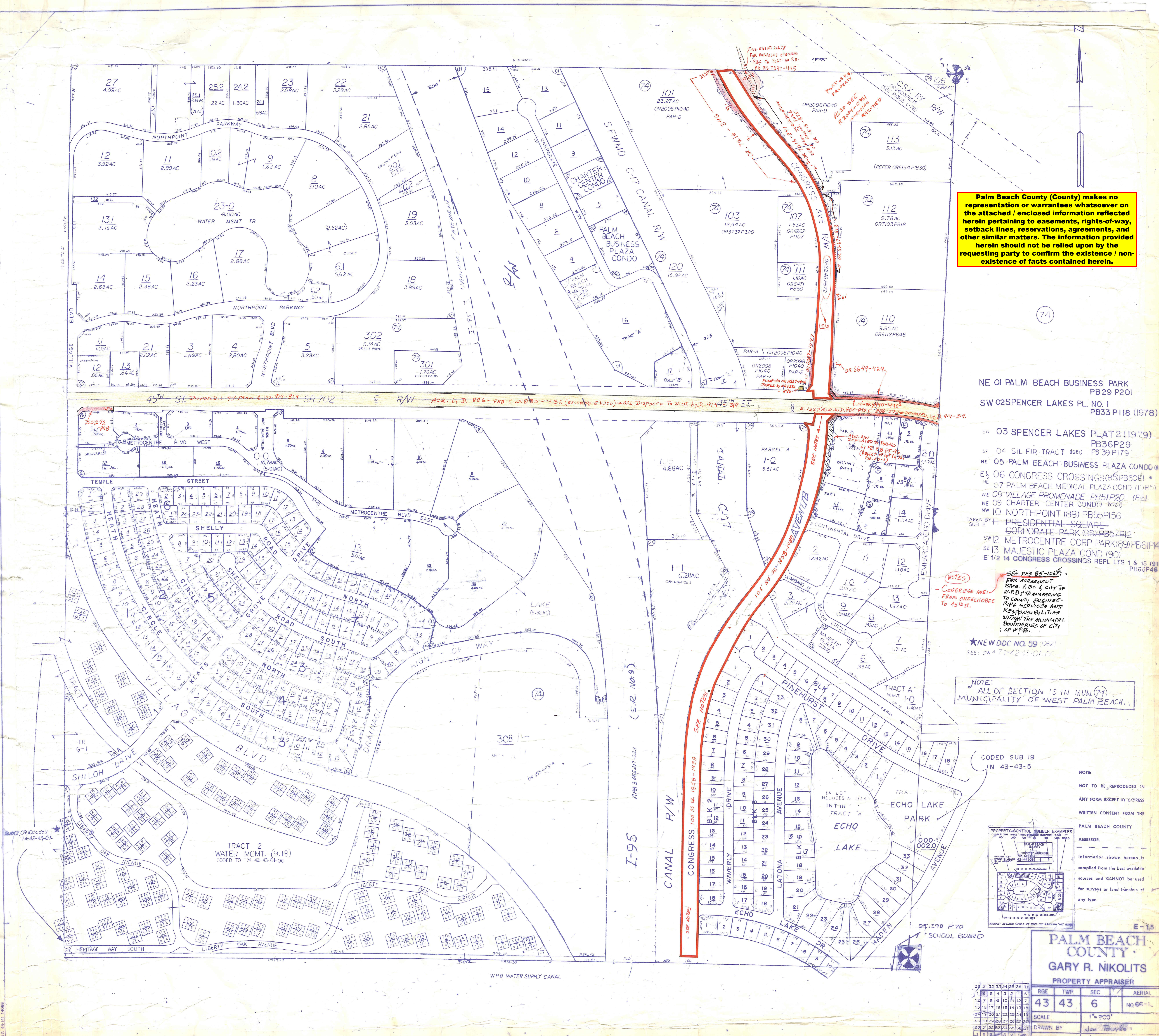
CODED SUB 19
 IN 43-43-5



NOTE:
 NOT TO BE REPRODUCED IN ANY FORM EXCEPT BY EXPRESS WRITTEN CONSENT FROM THE PALM BEACH COUNTY ASSESSOR.
 Information shown hereon is compiled from the best available sources and CANNOT be used for surveys or land transfers of any type.

PALM BEACH COUNTY
GARY R. NIKOLITS
 PROPERTY APPRAISER

31	32	33	34	35	36	37	RGE	TWP	SEC	AERIAL
1	2	3	4	5	6	7	43	43	6	NO 66-1
8	9	10	11	12	13	14	SCALE	1" = 200'		
15	16	17	18	19	20	21	DRAWN BY	Jax Trinkle		
22	23	24	25	26	27	28	UPDATED	9.19.94		
29	30	31	32	33	34	35				
36	37	38	39	40	41	42				



BRUNING 44141 14068