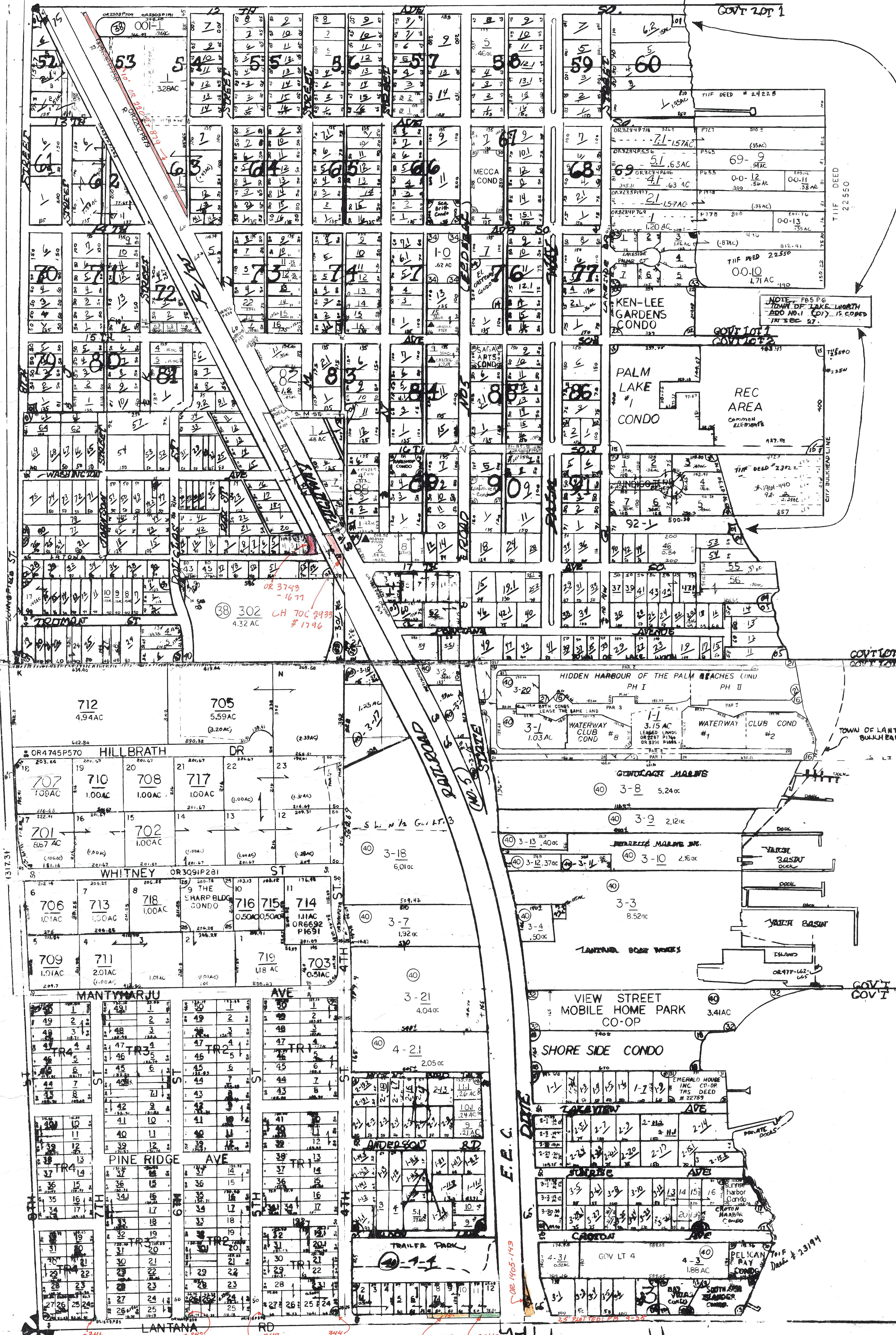
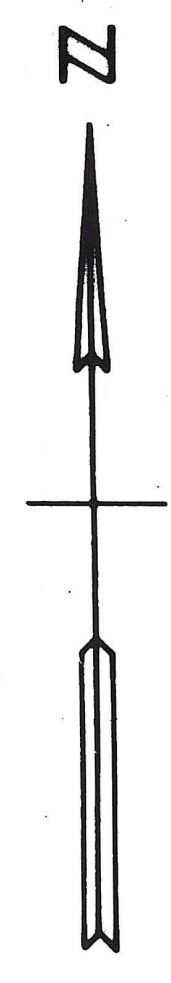


Palm Beach County (County) makes no representation or warranties whatsoever on the attached / enclosed information reflected herein pertaining to easements, rights-of-way, setback lines, reservations, agreements, and other similar matters. The information provided herein should not be relied upon by the requesting party to confirm the existence / non-existence of facts contained herein.

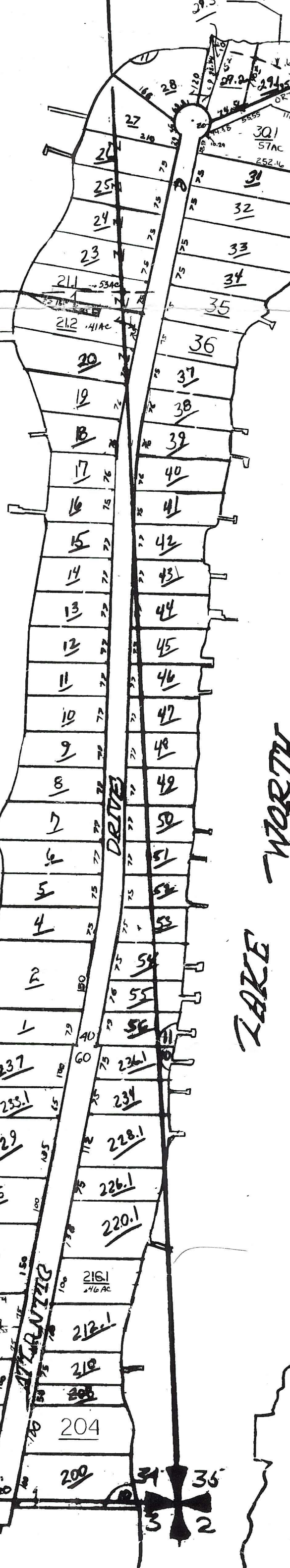


LAKE WORTH

INTRACOASTAL WATERWAY



GOV'T LOT 5
GOV'T LOT 6



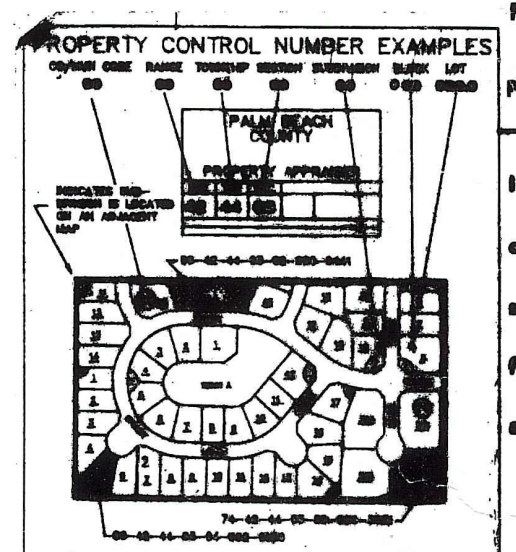
- NW 01 OSBORNE ADD, AMND (RES 130-94) 38
- OR8552P592 38
- NW 02 AMENDED PLAT OF LANTANA COURT 38
- PB 11-26 38
- ★ NW 03 PARKVIEW HEIGHTS SUB OF S&L OF SW 1/4 OF NW 1/4 38
- PB 21-22 38
- NW 04 BLACKWELL PARK, REV. PB 10-63 38
- NW 05 SOUTH PALM PARK PB 11-6 38
- SW 06 EDDY C YOUNG PROP. PB 9-25 40
- SW 07 LAKEVIEW MANORS PB 18-29 40
- SW 08 LANTANA PLAZA GOV'T LOT 4 PB 23-153 40
- SW 09 MANTYHARJU, PB 20-86 40
- SE 10 HYPOLYUXO ISLAND ADD PB 15-42 40
- SE 11 LAKE SHORES PB 23-216 40
- SW 12 BAY VILLAS CONDO LOTS 10, 11 AND PORTION 40
- OF LOTS 12 & 13 40
- SW 13 SOUTH SEA ISLANDER CONDO 40
- SW 14 EL CASTELAY CONDO 38
- SW 15 PALM LAKE #1 CONDO 40
- SW 16 WATERWAY CLUB CONDOS 40
- SW 17 CROTON HARBOR CONDO 40
- SW 18 SHORE SIDE CONDO (1981) 40
- SW 19 KARLSHOF CONDO (1981) 38
- SW 20 PELICAN BAY CONDO (1981) 40
- SW 21 HIDDEN HARBOUR OF THE PALM BEACHES CONDO 40
- (1982) 40
- NW 22 KEN-LEE GARDENS CONDO (1982) 38
- NW 23 SEA BRITT CONDO (1983) 38
- SE 24 SUNRISE HARBOR CONDO (1984) 40
- SW 25 SHARP BLDG CONDO (1984) 40
- SW 26 FINLANDIA HOUSE CONDO (1984) 40
- SW 27 WINTERHAVEN CONDO (1985) 40
- NW 28 SAGA APTS CONDO (1985) 40
- NW 29 INDIGO WATERS (89) PB 55P26 40
- NW 30 MECCA CONDO (1987) 40
- SW 31 EMERALD HOUSE INC CO-OP 40
- SW 32 VIEW STREET MOBILE HOME PARK CO OP 40
- NW 33 LAKESIDE PALMS (88) PB 58P149 40
- NW 34 ARUBA ARMS CONDO (75) 40

★ NOTE: SUB 03 IS OUT OF ADD NO. 1 TO TOWN OF LAKE WORTH REPL LOTS 142 BLK 86 PB 25P57 CODED SEC 27

▲ PARCEL RESTRICTED PER: UNITY OF TITLE

NOTE: N/2 IN MUN. OF LAKE WORTH S/2 IN MUN. OF LANTANA (AD)

NOTE: NOT TO BE REPRODUCED IN ANY FORM EXCEPT BY EXPRESS WRITTEN CONSENT FROM THE PALM BEACH COUNTY



PROPERTY APPRAISER Information shown herein is compiled from the best available sources and CANNOT be used for surveys or land transfers of any type.

PALM BEACH COUNTY GARY R. NIKOLITS PROPERTY APPRAISER

31	32	33	34	35	36	37	38	39	40
1	2	3	4	5	6	7	8	9	10
11	12	13	14	15	16	17	18	19	20
21	22	23	24	25	26	27	28	29	30
31	32	33	34	35	36	37	38	39	40
41	42	43	44	45	46	47	48	49	50
51	52	53	54	55	56	57	58	59	60
61	62	63	64	65	66	67	68	69	70
71	72	73	74	75	76	77	78	79	80
81	82	83	84	85	86	87	88	89	90
91	92	93	94	95	96	97	98	99	100

RGE TWP SEC AERIAL
43 44 34 NO 1177
SCALE 1" = 200'
DRAWN BY Jim Batic
UPDATED