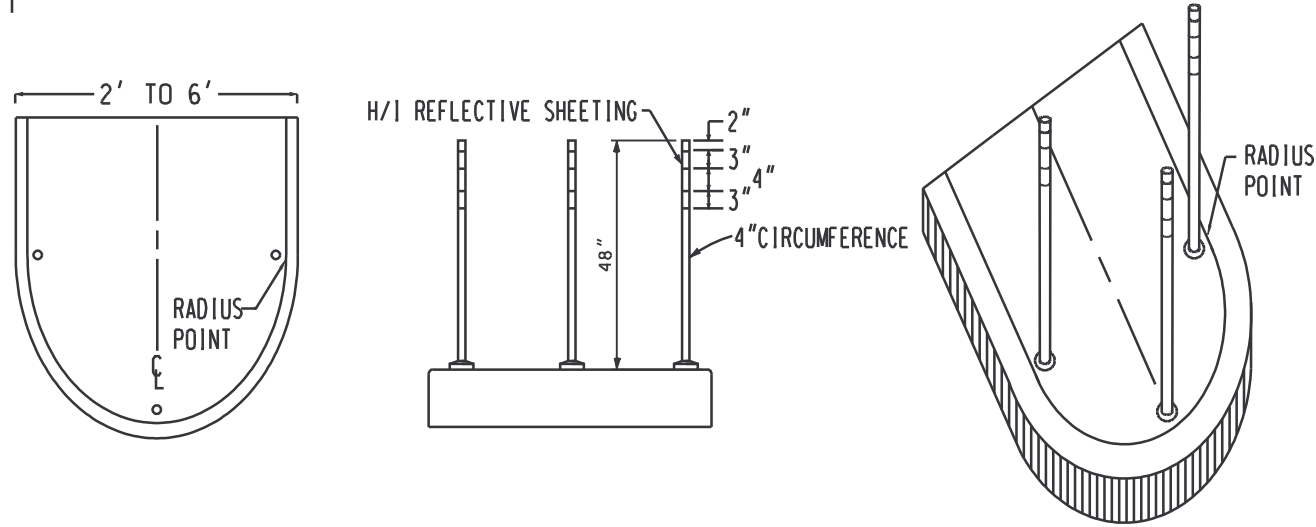
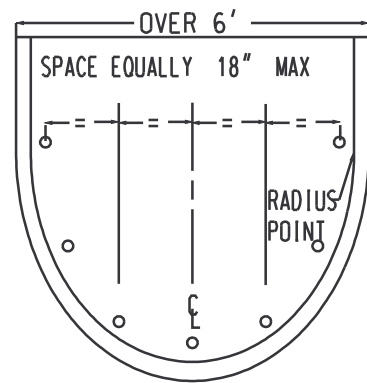


FLEXIBLE DELINEATOR POST MEDIAN INSTALLATION

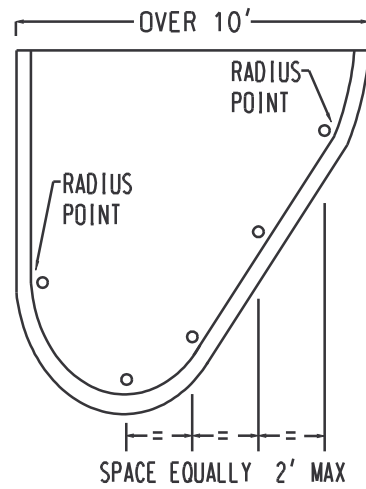
#1



#2



#3

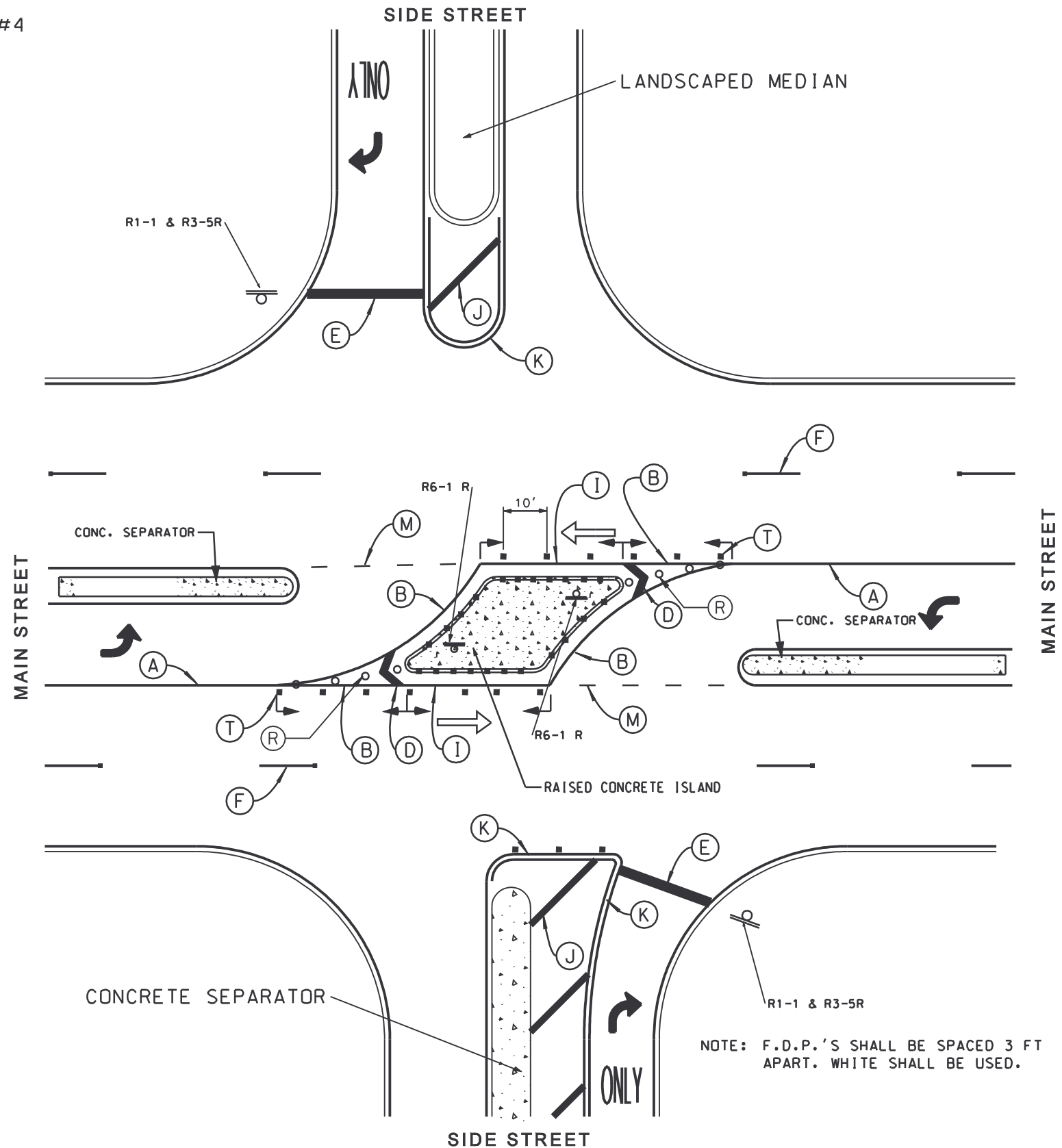


IN GENERAL, THE FLEXIBLE DELINEATOR POST (FDP) SHOULD BE USED AT THE FOLLOWING LOCATIONS:

-LOCATIONS WHERE NEED HAS BEEN DETERMINED BY AN ENGINEERING STUDY

1. IT IS RECOMMENDED THAT BOTH THE R4-7'S AND FDP'S BE USED ONLY WHERE NEED HAS BEEN DETERMINED BY AN ENGINEERING STUDY. HOWEVER AT SIGNALIZED INTERSECTIONS R4-7 WITH CASE I SHALL BE INSTALLED.
2. THE FDP SHALL MATCH THE ADJACENT EDGELINE COLOR (YELLOW OR WHITE ONLY).
3. EACH FDP SHALL HAVE A 3" BAND OF HIGH INTENSITY SHEETING INSTALLED 2" BELOW THE TOP THEN 4" GAP AND ANOTHER 3" BAND. THE POST BAND MUST MATCH THE POST COLOR.
4. FDP'S SHALL BE 48" HIGH TYP.
5. WHEN SHOWN ON PLANS, FDP'S SHALL BE IDENTIFIED IN A SIMILAR MANNER TO THAT SHOWN ON THIS TYPICAL. COLOR AND NUMBER OF EACH MUST BE SHOWN ON ALL SUMMARY OF QUANTITIES SHEETS. ALSO, COLOR MUST BE SPECIFIED FOR EACH FDP GROUP ON THE PLANS.
6. FDP TYPE AND INSTALLATION METHODS MUST BE APPROVED BY THE TRAFFIC DIVISION PRIOR TO USE.
7. ON DIRECTIONAL MEDIANS THE FDP'S MARKED ARE REQUIRED TO SUPPLEMENT THE EXISTING SIGNING, MARKINGS, AND RPM'S TO DETER WRONG WAY MANEUVERS. THESE SHOULD BE INSTALLED MIDWAY BETWEEN THE STRIPED CHEVRONS.

#4



PALM BEACH COUNTY, FLORIDA
TRAFFIC DIVISION

TYPICAL

FLEXIBLE DELINEATOR POST
PLACEMENT DETAIL

BOGDAN T. PIORKOWSKI REGISTERED ENGINEER DAN I. WEISBERG TRAFFIC DIRECTOR

NAME	DATE	SCALE	CONTRACT NO.
CGT	1-27-2004	N.T.S.	

DRAWN BY	TRACED BY	CHECKED BY	DRAWING
			T-P-06-001

SHEET 10 OF 19 SHEETS

NO.	DATE	REVISIONS	BY	APP.