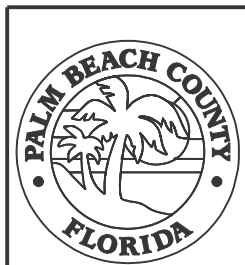
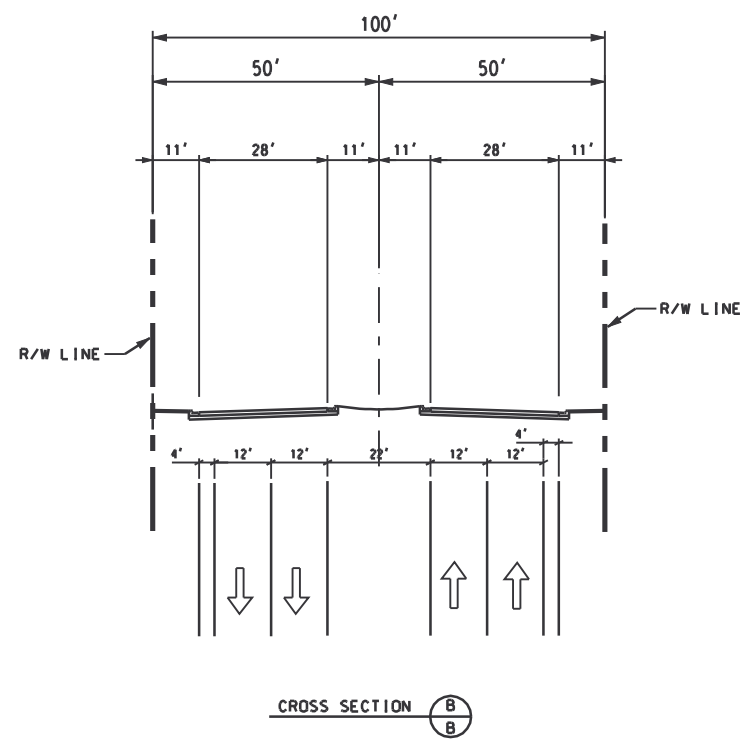
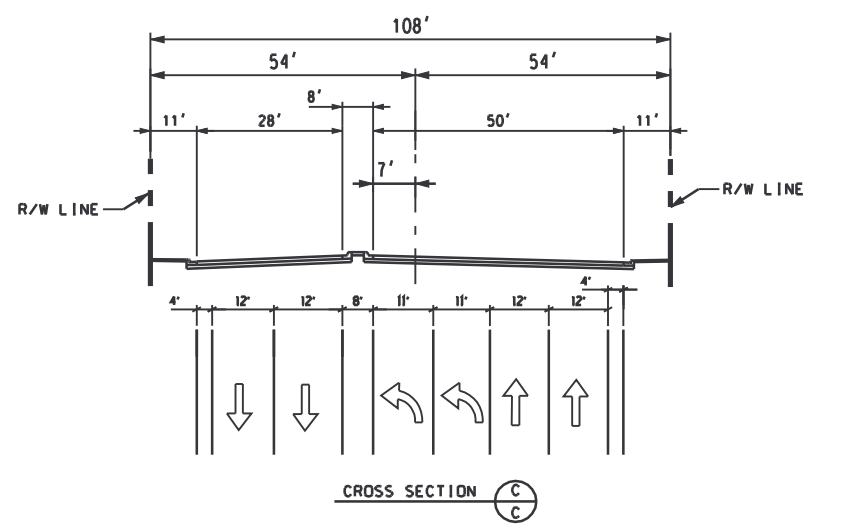
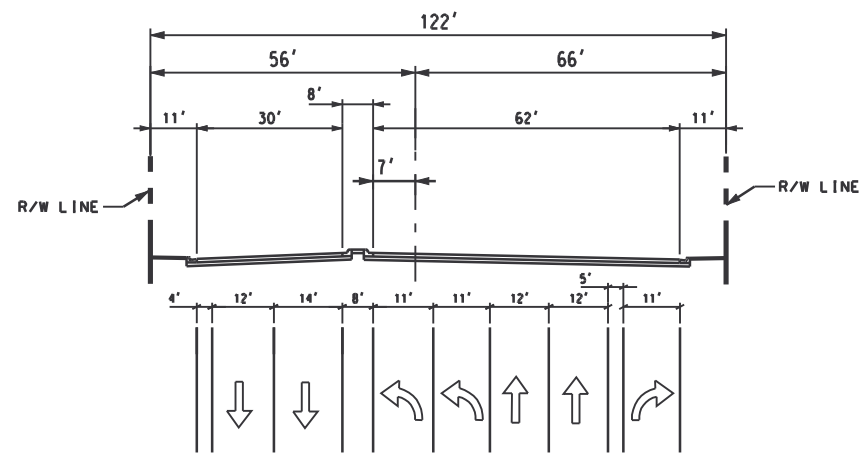
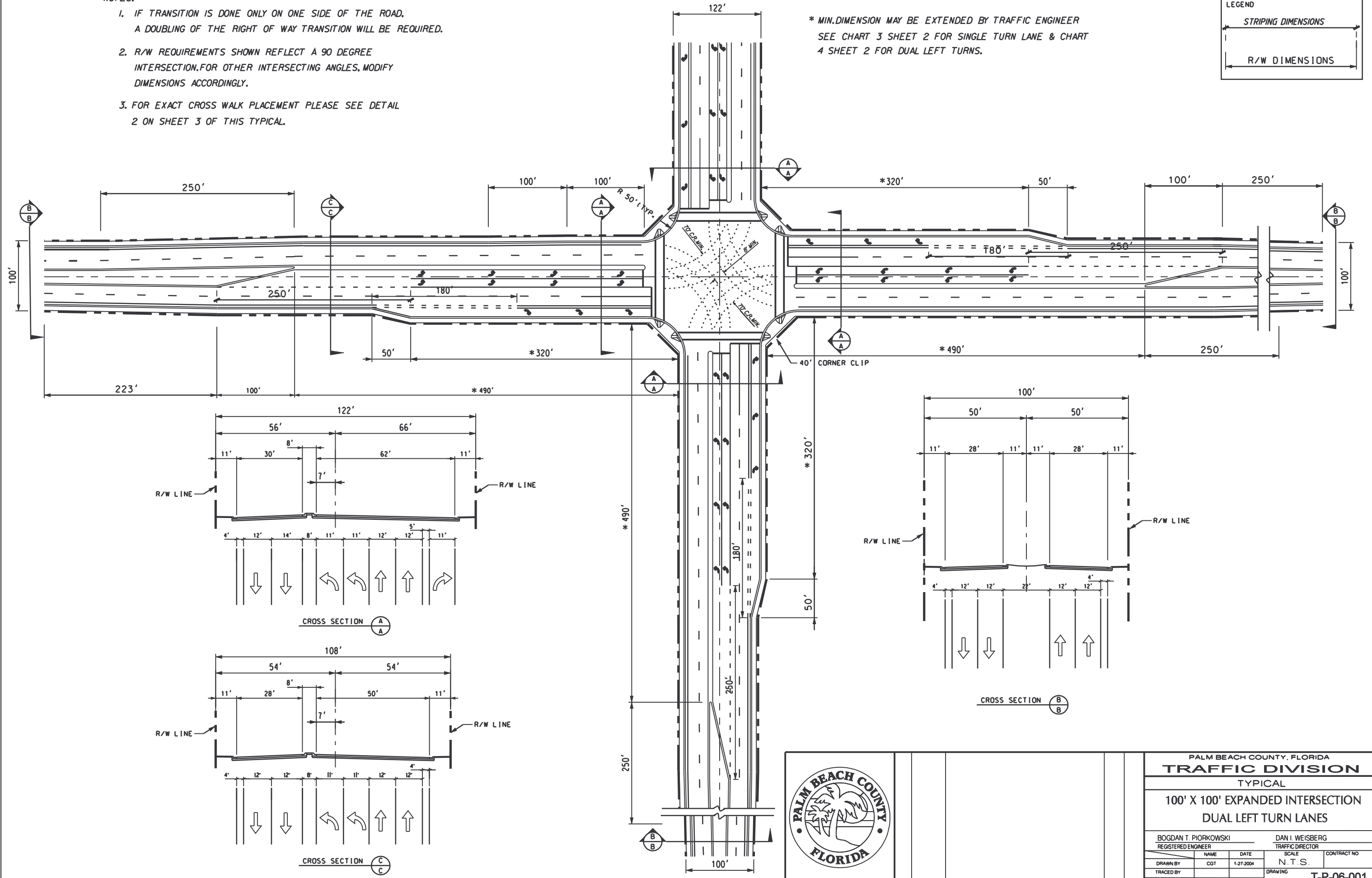
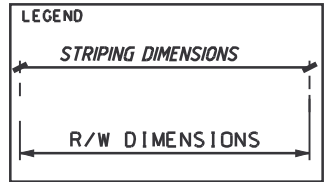


NOTES:

1. IF TRANSITION IS DONE ONLY ON ONE SIDE OF THE ROAD, A DOUBLING OF THE RIGHT OF WAY TRANSITION WILL BE REQUIRED.
2. R/W REQUIREMENTS SHOWN REFLECT A 90 DEGREE INTERSECTION. FOR OTHER INTERSECTING ANGLES, MODIFY DIMENSIONS ACCORDINGLY.
3. FOR EXACT CROSS WALK PLACEMENT PLEASE SEE DETAIL 2 ON SHEET 3 OF THIS TYPICAL.

* MIN. DIMENSION MAY BE EXTENDED BY TRAFFIC ENGINEER
SEE CHART 3 SHEET 2 FOR SINGLE TURN LANE & CHART 4 SHEET 2 FOR DUAL LEFT TURNS.



NO.	DATE	REVISIONS	BY	APP.

PALM BEACH COUNTY, FLORIDA			
TRAFFIC DIVISION			
TYPICAL			
100' X 100' EXPANDED INTERSECTION			
DUAL LEFT TURN LANES			
BOGDAN T. PIORKOWSKI REGISTERED ENGINEER		DAN I. WEISBERG TRAFFIC DIRECTOR	
DRAWN BY	NAME	DATE	SCALE
CGT	CGT	1-27-2004	N.T.S.
TRACED BY	DRAWING		
CHECKED BY	T-P-06-001		
SHEET 16		OF 19 SHEETS	