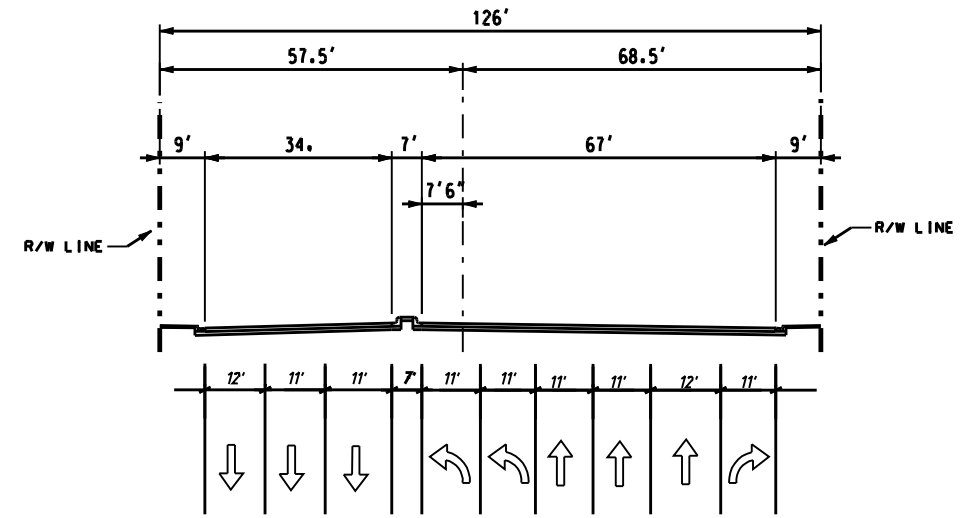
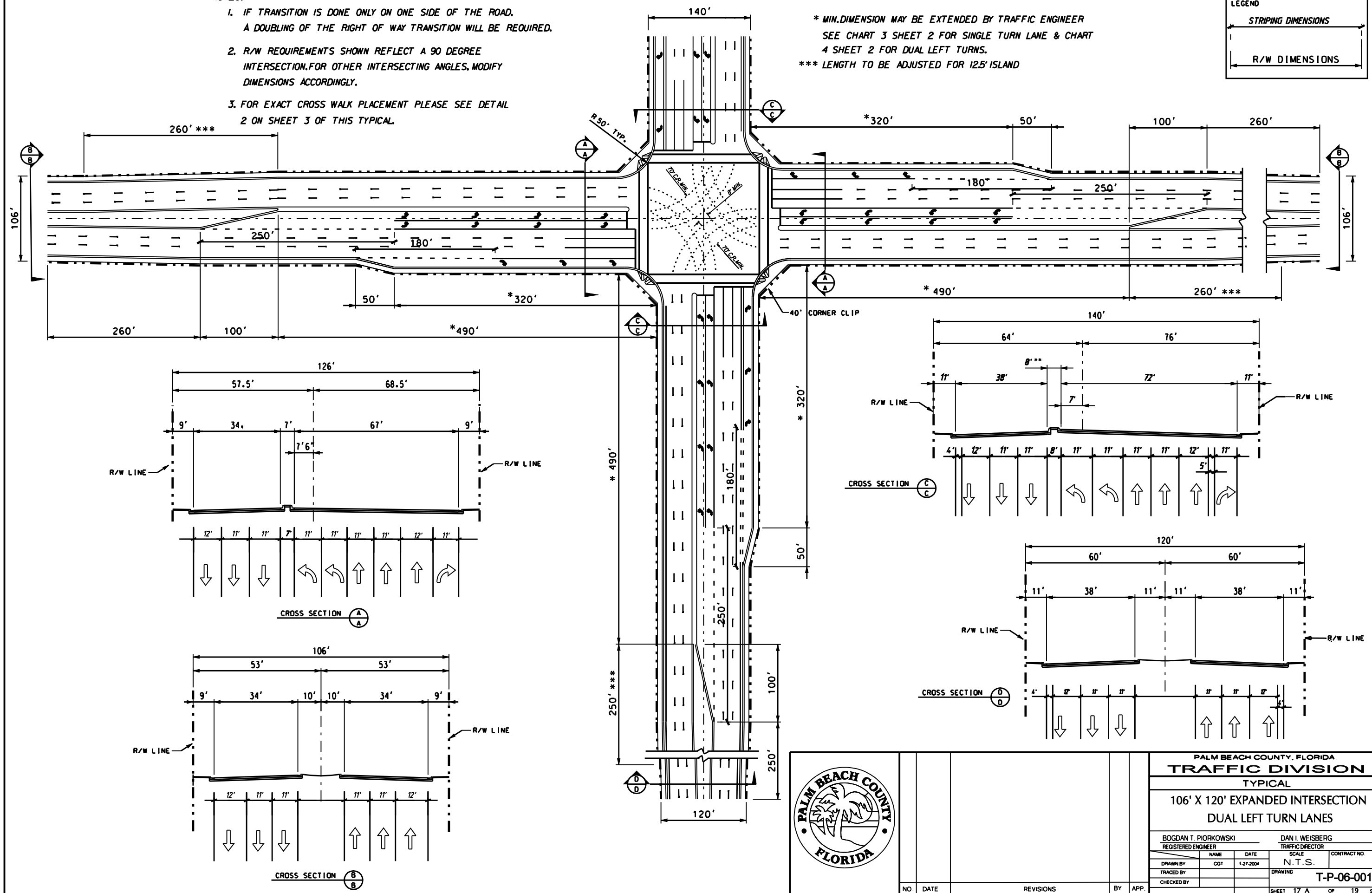
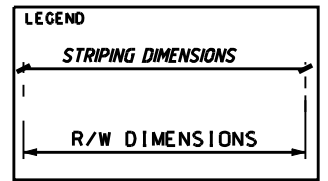


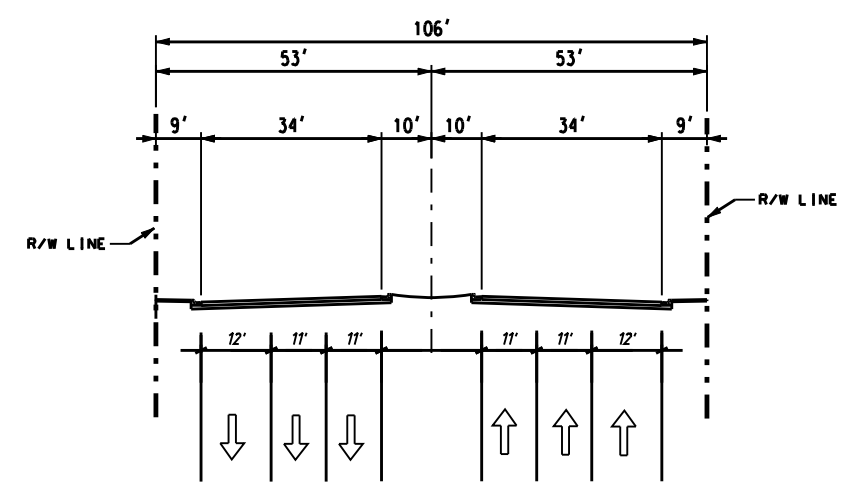
**NOTES:**

1. IF TRANSITION IS DONE ONLY ON ONE SIDE OF THE ROAD, A DOUBLING OF THE RIGHT OF WAY TRANSITION WILL BE REQUIRED.
2. R/W REQUIREMENTS SHOWN REFLECT A 90 DEGREE INTERSECTION. FOR OTHER INTERSECTING ANGLES, MODIFY DIMENSIONS ACCORDINGLY.
3. FOR EXACT CROSS WALK PLACEMENT PLEASE SEE DETAIL 2 ON SHEET 3 OF THIS TYPICAL.

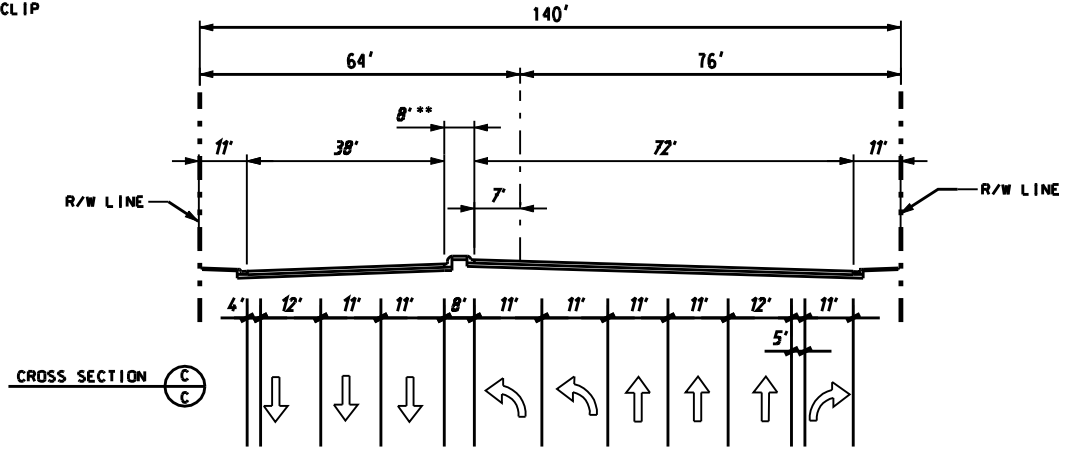
\* MIN. DIMENSION MAY BE EXTENDED BY TRAFFIC ENGINEER  
 SEE CHART 3 SHEET 2 FOR SINGLE TURN LANE & CHART 4 SHEET 2 FOR DUAL LEFT TURNS.  
 \*\*\* LENGTH TO BE ADJUSTED FOR 12.5' ISLAND



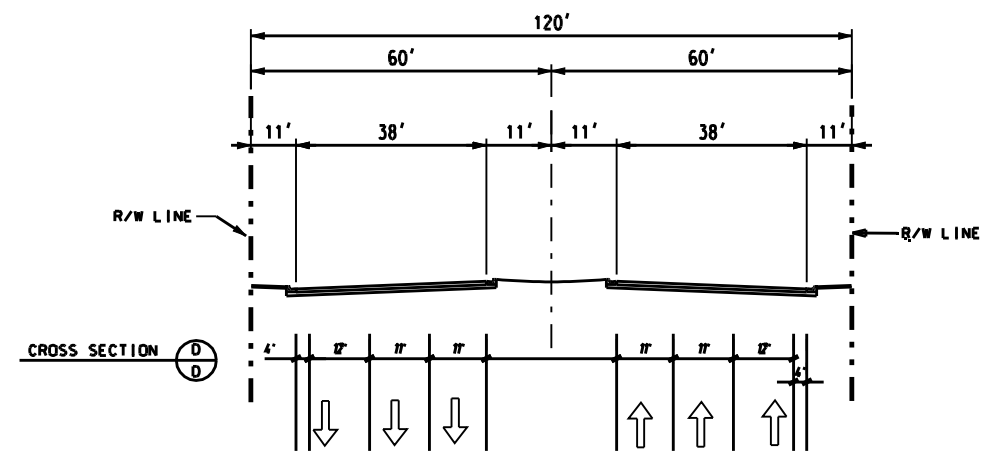
CROSS SECTION A-A



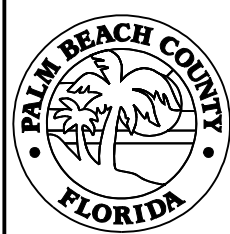
CROSS SECTION B-B



CROSS SECTION C-C



CROSS SECTION D-D



NO.	DATE	REVISIONS	BY	APP.

PALM BEACH COUNTY, FLORIDA				
TRAFFIC DIVISION				
TYPICAL				
106' X 120' EXPANDED INTERSECTION				
DUAL LEFT TURN LANES				
BOGDAN T. PIORKOWSKI		DAN I. WEISBERG		
REGISTERED ENGINEER		TRAFFIC DIRECTOR		
DRAWN BY	NAME	DATE	SCALE	CONTRACT NO.
TRACED BY	CGT	1-27-2004	N.T.S.	
CHECKED BY				
			DRAWING	T-P-06-001
			SHEET	17 A OF 19 SHEETS