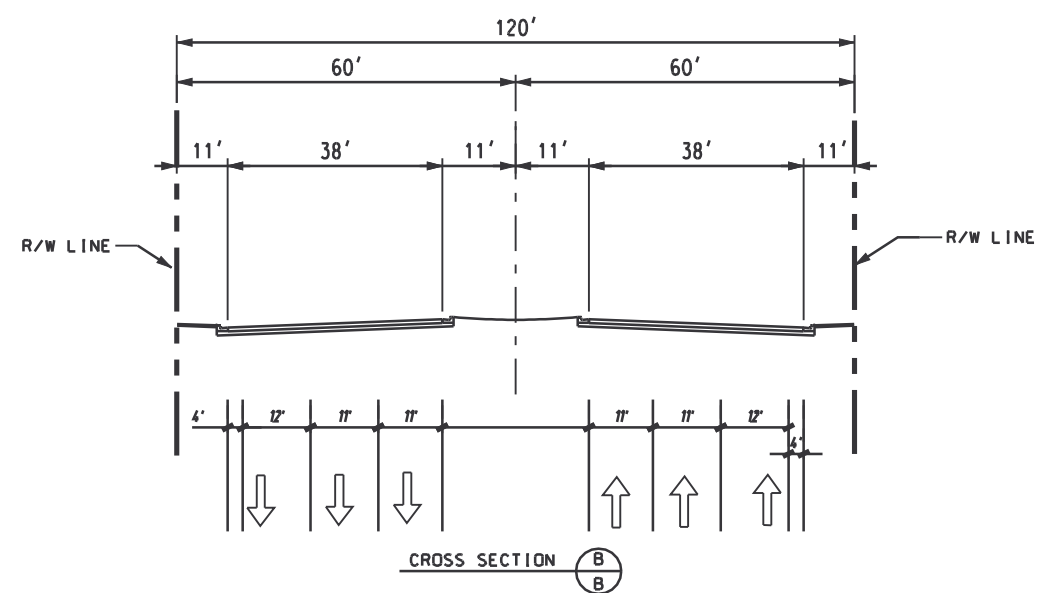
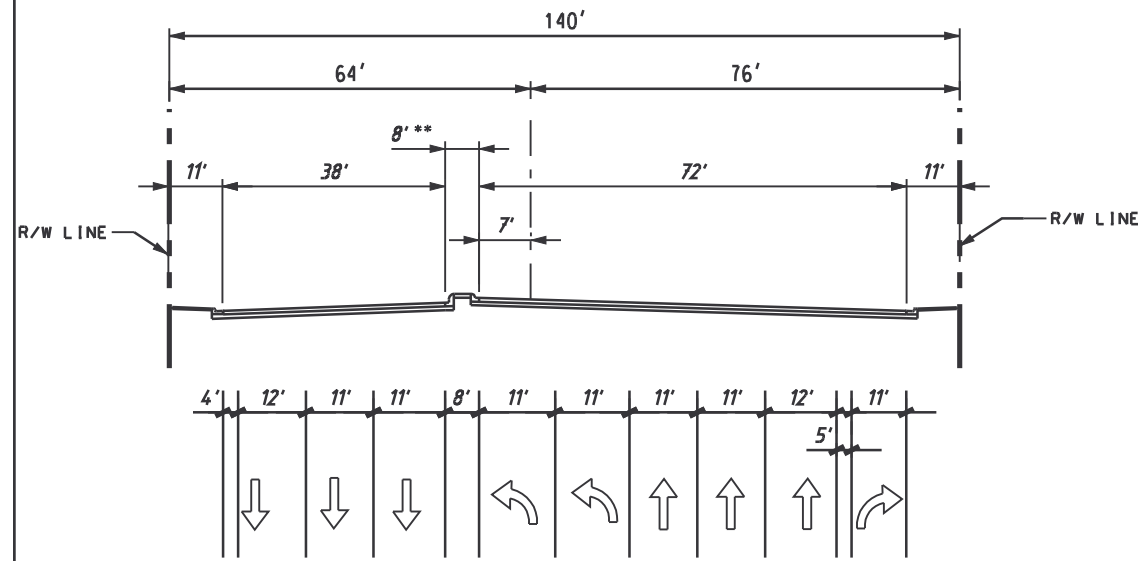
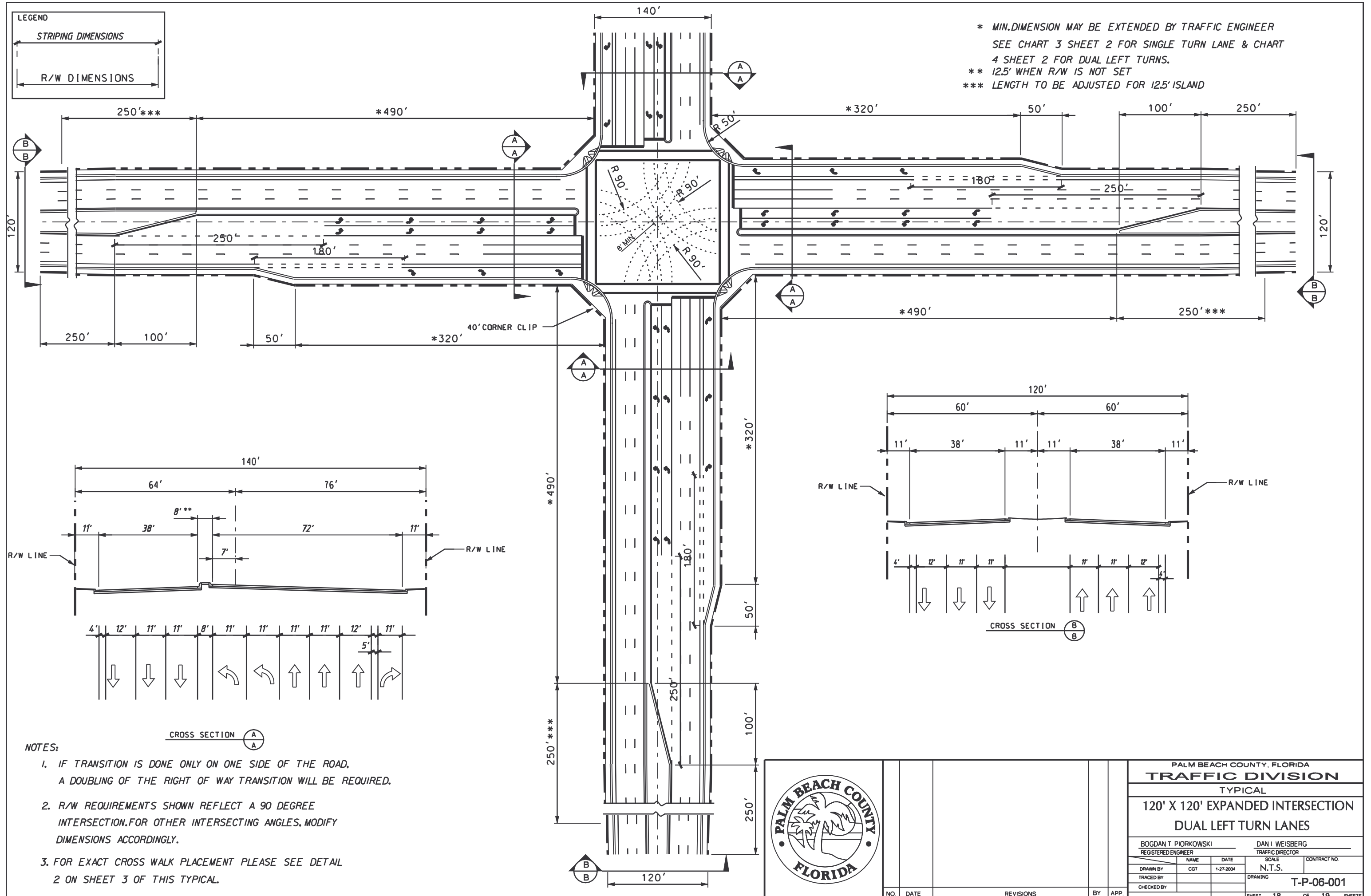


* MIN. DIMENSION MAY BE EXTENDED BY TRAFFIC ENGINEER
 SEE CHART 3 SHEET 2 FOR SINGLE TURN LANE & CHART 4 SHEET 2 FOR DUAL LEFT TURNS.
 ** 12.5' WHEN R/W IS NOT SET
 *** LENGTH TO BE ADJUSTED FOR 12.5' ISLAND



- NOTES:
- IF TRANSITION IS DONE ONLY ON ONE SIDE OF THE ROAD, A DOUBLING OF THE RIGHT OF WAY TRANSITION WILL BE REQUIRED.
 - R/W REQUIREMENTS SHOWN REFLECT A 90 DEGREE INTERSECTION. FOR OTHER INTERSECTING ANGLES, MODIFY DIMENSIONS ACCORDINGLY.
 - FOR EXACT CROSS WALK PLACEMENT PLEASE SEE DETAIL 2 ON SHEET 3 OF THIS TYPICAL.

		PALM BEACH COUNTY, FLORIDA			
		TRAFFIC DIVISION			
		TYPICAL			
		120' X 120' EXPANDED INTERSECTION			
		DUAL LEFT TURN LANES			
		BOGDAN T. PIORKOWSKI REGISTERED ENGINEER		DAN I. WEISBERG TRAFFIC DIRECTOR	
DRAWN BY	NAME	DATE	SCALE	CONTRACT NO.	
TRACED BY	CGT	1-27-2004	N.T.S.		
CHECKED BY			DRAWING	T-P-06-001	
NO.	DATE	REVISIONS	BY	APP.	SHEET 18 OF 19 SHEETS