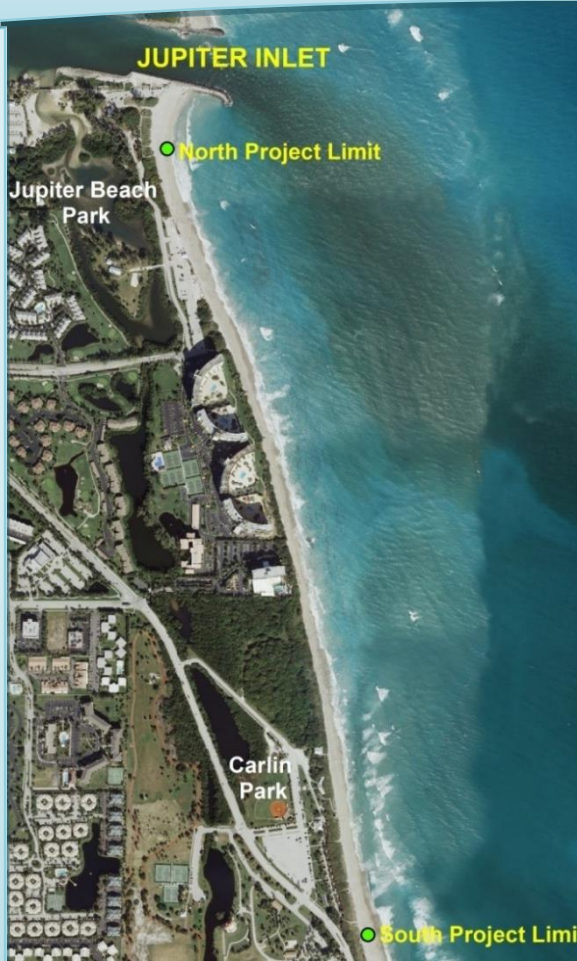




Jupiter/Carlin Renourishment Project

A Palm Beach County Shore Protection Project



Hurricane Dorian caused dune erosion in front of the Jupiter Civic Center. (September 2019).



Newly constructed beach 2019/20 storm repair project (January 2020).

Project Location

- Northern Palm Beach County (PBC), south of the Jupiter Inlet, extending to the southern boundary of Carlin Park. (1.05 miles)

The Problem

- Since 2002, nourishments within the project area have only replaced losses due to storm damage. This will be the first complete nourishment of the full project template since 2002.
- Beach erosion threatens land & buildings and results in the loss of important beach & dune habitat and recreation area.

Solutions and History

- The project area was last nourished in 2019/20 as part of a cooperative effort between the US Army Corps of Engineers and PBC, placing 411,000 cubic yards of sand for a storm repair project.
- Intracoastal Waterway maintenance & inlet dredging are conducted by the Florida Inland Navigational District (FIND) and the Jupiter Inlet District (JID).

Benefits

- A stabilized beach and dune will provide storm protection, recreational opportunities, and sea turtle nesting habitat.

Project Overview

- This project is also known as Segment 1 of the North County Comprehensive Shoreline Protection Project.
- All State/Federal permits for the project have been issued.
- Construction is scheduled between November 2021 and February 2022 placing up to 416,000 cubic yards of sand, providing a fully restored dune and beach.
- Work will occur on a 24 hour basis.
- The sand source is an offshore borrow area 1.6 miles northeast of Jupiter inlet in approximately 70 ft. of water.
- The project is estimated to cost \$7 million and will be funded in cooperation with the Florida Department of Environmental protection.
- Great Lakes Dredge and Dock is the selected contractor. Their primary staging area will be located within the vegetated lot on the north end of Carlin Park.
- Dark sand color, organic odor, and cloudy water during and immediately post construction is normal. The sand will lighten and the odor will subside after a couple weeks of exposure to the sun.

Project Partners

Palm Beach County and Florida Department of Environmental Protection



Connect with us @ [pbcerm](#)



Palm Beach County Board of County Commissioners
Department of Environmental Resources Management
 2300 North Jog Road - Fourth Floor, West Palm Beach, FL 33411
 561-233-2400 pbcerm.com

