



Artificial Reef Program

Palm Beach County
Department of Environmental
Resources Management



What Are Artificial Reefs and Why Do We Need Them?

Artificial reefs are man-made habitats built from various materials including rock, old ships, heavy-gauge steel structures, concrete, and prefabricated modules. They are placed in areas away from natural reefs, creating new marine life communities.

Over the last several decades, both nearshore and deeper offshore habitats for many fish and shellfish have been significantly reduced or heavily impacted by coastal development, accidents, and severe storms. The reduction of these habitats, along with increased pressures on our remaining coastal resources, has led to declines in many marine life populations. Each year, it seems another fishery or marine animal becomes heavily regulated or protected.

Artificial reefs provide food, shelter, protection, and spawning areas for hundreds of species of fish and other marine organisms.

They also provide alternate areas for use by scuba divers and anglers, reducing the user pressures on natural reefs. Palm Beach County has greater than 60 artificial reefs and more are constructed every year.



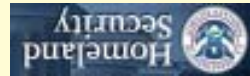
The History of the Artificial Reef Program: A Factual Fish Story

Palm Beach County began constructing artificial reefs in the 1960's. At that time, the County and the West Palm Beach Fishing Club established the "East Palm Beach Reef." The reef was created by sinking several ships: a 165' Navy Patrol Craft (PC I174), a 185' private yacht called the Mizpah, and the 440' freighter Amaryllis.

A turning point for the program was reached in 1985, when the Palm Beach County Board of County Commissioners officially appointed the Palm Beach County Artificial Reef Committee. The Committee is comprised of government officials, commercial and recreational anglers, SCUBA divers, scientists, and conservationists. The Committee meets regularly to discuss artificial reef business and the public is encouraged to attend. Since 1987, Palm Beach County's Department of Environmental Resources Management has been responsible for providing staff support for the Committee and administering the Artificial Reef Program.

Since the Committee was appointed, the County has scuttled more than 25 wrecks and barges and placed many thousands of tons of limestone and concrete structures on the ocean floor off Palm Beach County beaches and in the Lake Worth Lagoon. These artificial reefs have created a diversity of habitats to benefit our marine environment, anglers, scuba divers, and all of Palm Beach County's residents and visitors.

Palm Beach County
Board of County Commissioners



The Governor's River Walk Reef is composed of four confiscated coastal freighters sunk as a group in 90 feet of water approximately one mile southeast of the Lake Worth Inlet. These vessels were seized by the Department of Homeland Security as part of a two-year sting operation involving a coordinated effort of over 279 officers from more than a dozen federal, state and local law enforcement agencies known as "Operation River Walk" on the Miami River. As a tribute, Palm Beach County and U.S. Customs presented a 2,000 pound ship's propeller to Governor Bush in appreciation for his support in taking a hard-line on drug smuggling as well as the development of local fishing and recreational diving opportunities. The location of the ships is referred to as the "Governor's River Walk Reef."

Total costs for scuttling the four ships was \$117,000. The Florida Fish and Wildlife Conservation Commission's Artificial Reef Program provided \$37,500 in grant funding, with the County providing \$84,500 from County Vessel Registration fees to cover the balance of the project costs. In addition, U.S. Customs, absorbed thousands of dollars in dockage fees following the vessel seizures for clean-up and sinking. The four ships include the M/V's SHASHA BOEKANIER, GILBERT SEA, ST. JACQUES, and THOZINA, averaging approximately 180' in length. The M/V's GILBERT SEA and ST. JACQUES were unique as their wheelhouses had seascape murals painted on them by popular local artist Doug Bolly. In addition, the THOZINA and ST. JACQUES were "sister ships" built a year apart at the same shipyard in Germany with identical wheelhouses, masts and forepeaks. The final resting place for these two ships is now less than two hundred feet apart, over 5,000 miles from where they were made.

Governor's River Walk Reef



Funding

Funding for the Artificial Reef Program comes from the County's Vessel Registration Trust Fund. These fees, used strictly to build environmental enhancement projects, are supplemented by grants from the Federal government (Federal Aid in Sportfish Restoration), State government (Marine Resources FWC Conservation Trust Fund-Saltwater Fishing License), Florida Inland Navigation District, various fishing tournaments, local dive associations, and generous corporate and individual private donations. Volunteers from local fishing and diving clubs sometimes help clean and prepare ships for sinking.



Looking Ahead

In 1991, the Committee was given the responsibility of estuarine enhancement. The group changed its name accordingly, and is now known as the Artificial Reef and Estuarine Enhancement Committee. Estuarine restoration activities started with Munyon Island and continue with John's Island, Peanut Island, and Snook Island restoration projects. In addition, numerous smaller restoration projects have been completed within the Lake Worth Lagoon.

The County continues to make innovative use of natural rock, wrecks, and reef structures as it strives to create a balanced and diverse enhancement of the marine habitat resources of our coastal and inshore waters. Snook Ledges in the Lake Worth Lagoon and the Habitat Corridors linking isolated artificial reefs offshore are two examples that illustrate this philosophy of balance, diversity, and innovation.

Getting Involved

Educating the public and disseminating information about projects are vital parts of the Artificial Reef Program. If you would like to view more detailed information about any of Palm Beach County's artificial reefs, or updates on new projects, please visit the website at www.co.palm-beach.fl.us/reef or call ERM at 561-233-2400.

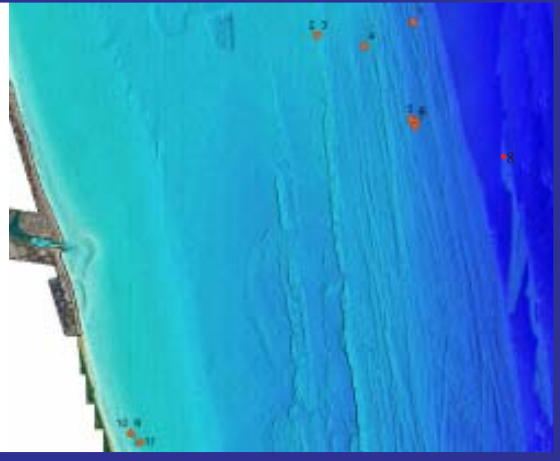


Protecting Our Investment

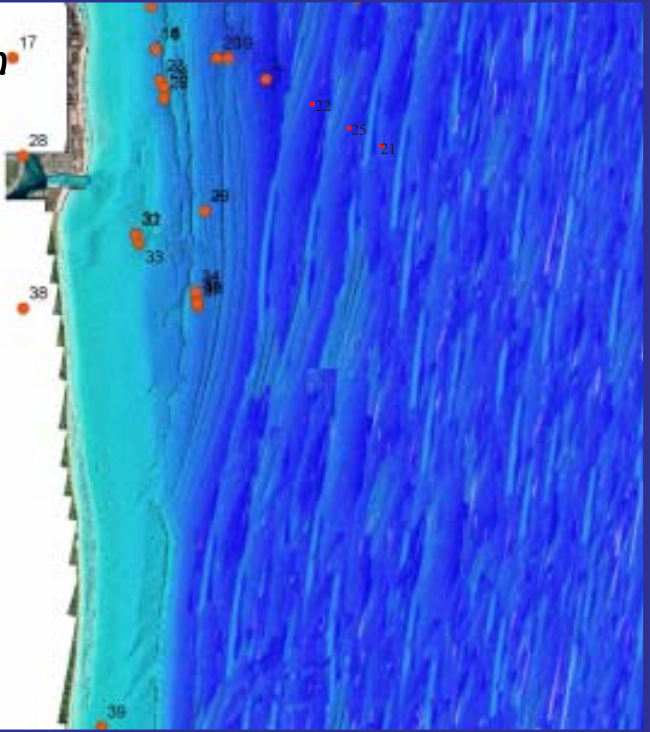
The County strives to manage and improve the quality of its artificial reefs. Most reefs are constructed within recreation diving limits and are monitored by volunteers from the Palm Beach County Reef Research Team and County staff. Data is collected in order to improve future artificial reef construction.

Reef Location Map

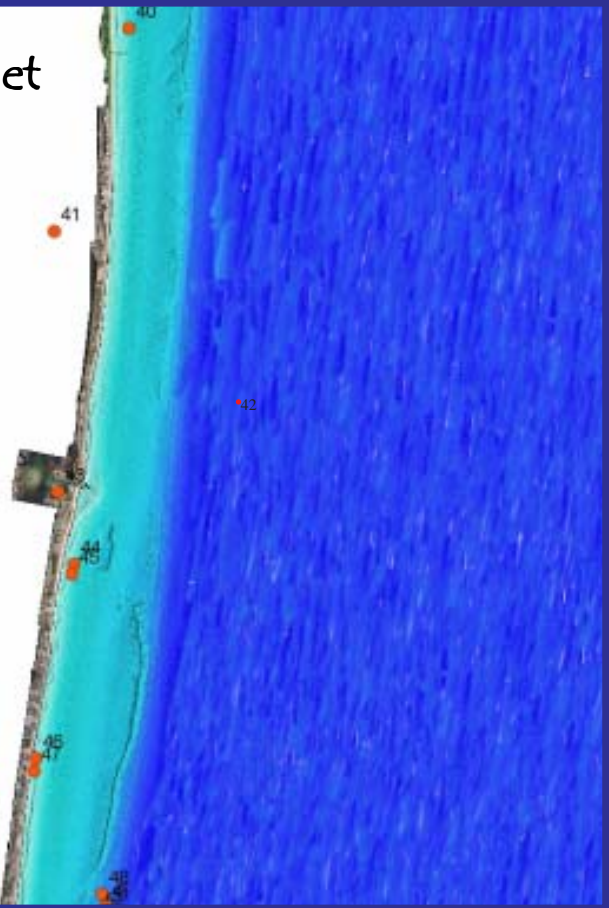
Jupiter Inlet



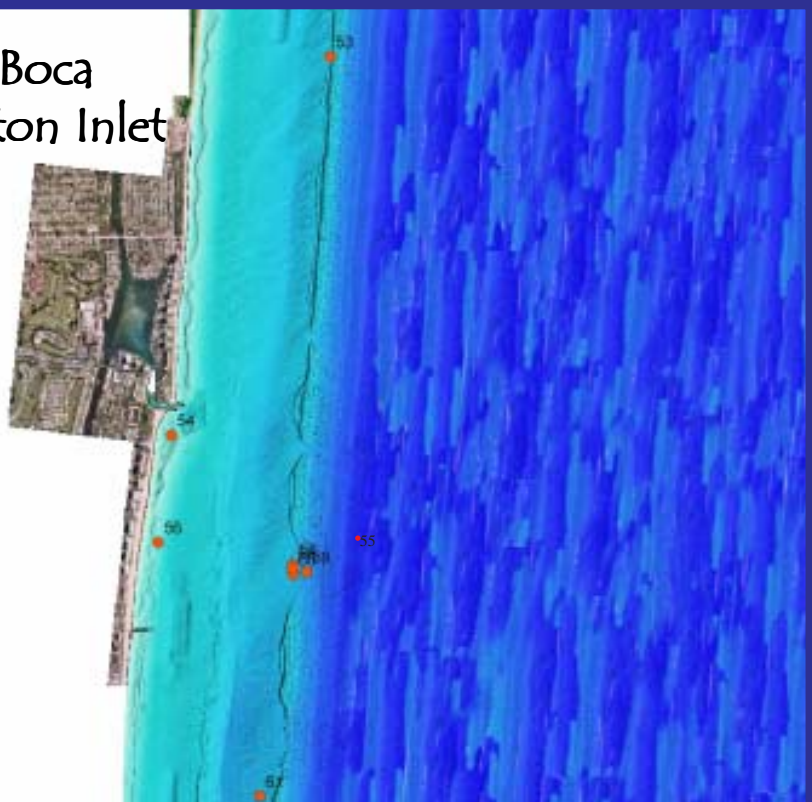
Palm Beach Inlet



Boynton Inlet



Boca Raton Inlet



Reef #	Reef Name and Materials	Depth in feet	Coordinates
Jupiter Inlet			
1	Jupiter Concrete 250 tons concrete	90'	26° 59.79 N 80° 00.45 W
2	Barge MG111 195' Hopper Barge	60'	26° 58.67 N* 80° 01.49 W
3	Barge MG111/Concrete 900 tons concrete	60'	26° 58.67 N 80° 01.49 W
4	Tug Boat Reef 3 70' Tug Boats	70'	26° 58.56 N* 80° 00.98 W
5	ESSO BONAIRE III 147' Tanker	90'	26° 57.85 N* 80° 00.48 W
6	MISS JENNY 55' Dredge Barge	90'	26° 57.83 N* 80° 00.44 W
7	ZION TRAIN 164' Coastal Freighter	90'	26° 57.78 N* 80° 00.44 W
8	SEA MIST II 265' Coastal Freighter (4900 tons)	210'	26° 57.49 N* 79° 59.11 W
9	Diamond Radnor Rock I 9500 tons cloth on rock	15'	26° 54.83 N* 80° 03.44 W
10	Diamond Radnor Concrete 9500 tons cloth on rock	15'	26° 54.83 N* 80° 03.44 W
11	Diamond Radnor Barge 110' Barge	20'	26° 54.74 N* 80° 03.44 W
Palm Beach Inlet			
12	Murphy's Barge II 110' Deck Barge	75'	26° 48.13 N 80° 01.10 W
13	Royal Park Bridge 15,000 tons bridge material	75'	26° 47.68 N* 80° 01.05 W
14	Royal Park Barge I 130' Barge	75'	26° 47.68 N* 80° 01.05 W
15	Royal Park Barge II 70' Barge	75'	26° 47.69 N* 80° 01.05 W
16	Royal Park Tug 50 Tug	75'	26° 47.69 N* 80° 01.05 W
17	Sugar Sands Reef Modules / Rock	23'	26° 47.61 N* 80° 02.69 W
18	Sylvina Express 200' Freighter	270'	26° 47.60 N* 79° 59.18 W
19	PRINCESS ANNE 340' Car Ferry	98'	26° 47.59 N* 80° 00.22 W
20	Spearman's Barge 100' Deck Barge	79'	26° 47.59 N* 80° 00.35 W
21	Classic Barge P1 195' Hopper Barge	275'	26° 47.42 N* 79° 59.10 W
22	Playground 1500 tons Concrete	140'	26° 47.37 N 79° 59.79 W
23	Research Team Reef 80' Barge/Concrete	70'	26° 47.36 N* 80° 01.00 W
24	AMARYLLIS 440' Freighter	80'	26° 47.30 N* 80° 00.96 W
25	Ande Reef 295' JED CARRIER	185'	26° 47.28 N* 79° 59.54 W
26	MIZPAH 185' Yacht	80'	26° 47.18 N* 80° 00.96 W
27	PC1174 165' Patrol Craft	80'	26° 47.18 N* 80° 00.96 W
28	Peanut Island Fishing Pier 200' Rock/Prefabricated Structures	10'	26° 46.60 N* 80° 02.58 W
29	EIDSVAG 150' Freighter	80'	26° 46.02 N 80° 00.50 W
30	Rolls Royce 120' Barge	80'	26° 46.02 N 80° 00.50 W
31	TSO PARADISE 82' Yacht	60'	26° 45.79 N* 80° 01.29 W
32	Tri-County Concrete 6200 tons concrete	60'	26° 45.78 N* 80° 01.29 W
33	Cross Current Reef 195' Barge/5000 tons rock	60'	26° 45.69 N* 80° 01.26 W
34	GILBERT SEA 175' Coastal Freighter	88'	26° 45.191 N* 80° 00.613 W
35	ST. JACQUES 174' Coastal Freighter	88'	26° 45.119 N* 80° 00.605 W
36	THOZINA 174' Coastal Freighter	90'	26° 45.07 N* 80° 00.59 W
37	SHASHA BOEKANIER 185' Coastal Freighter	90'	26° 45.047 N* 80° 00.594 W
38	Rybovich Reef Modules/Rock/Barge	23'	26° 45.03 N* 80° 02.59 W
39	PEP Reef 240 Concrete Modules	26'	26° 40.72 N* 80° 01.73 W
Boynton Inlet			
40	Kreusler Park Concrete / Rock (Ephemeral)	11'	26° 37.00 N 80° 02.00 W
41	Lantana Artificial Reef Site 100' x 40' Prefabricated Structures	10'	26° 35.10 N 80° 02.80 W
42	Boynton Kiwanis-Miller Lite Reef 317' Freighter	200'	26° 33.24 N 80° 01.06 W
43	Boynton Inlet Reef 900 tons Rock	14'	26° 32.65 N* 80° 02.78 W
44	Ocean Ridge North 1500 tons concrete	18'	26° 31.97 N* 80° 02.62 W
45	Ocean Ridge South 1500 tons concrete	21'	26° 31.88 N* 80° 02.64 W
46	Gulfstream North 3000 tons rock	11'	26° 30.15 N* 80° 03.03 W
47	Gulfstream South 3000 tons rock	11'	26° 30.03 N* 80° 03.05 W
48	BECKS 195' Freighter	80'	26° 28.87 N* 80° 02.35 W
49	BUDWEISER BAR 150' Freighter	85'	26° 28.75 N* 80° 02.31 W
50	CASTOR REEF 258' Coastal Freighter	110'	26° 28.75 N* 80° 02.228 W
51	SWORDFISH 70' Treasure Hunter	80'	26° 28.70 N* 80° 02.33 W
52	Genesis Reef 2300 tons Concrete	80'	26° 28.65 N* 80° 02.40 W
Boca Raton Inlet			
53	CSA Modules 12 Concrete Modules	60'	26° 21.97 N* 80° 03.30 W
54	South Inlet Park Reef N 17,000 tons limestone rock	12'	26° 20.00 N* 80° 04.24 W
55	HYDRO ATLANTIC 325' Dredge	165'	26° 19.49 N* 80° 03.04 W
56	South Inlet Park Reef S 17,000 tons limestone rock	12'	26° 19.44 N* 80° 04.32 W
57	SEA EMPEROR 171' Barge / Concrete	65'	26° 19.32 N* 80° 03.54 W
58	Fish Corridor 1100 tons Rock, connecting Sea Emperor	70'	26° 19.30 N* 80° 03.54 W
59	NOULA EXPRESS 120' Freighter	70'	26° 19.28 N* 80° 03.46 W
60	UNITED CARIBBEAN 145' Coastal Freighter	145'	26° 19.27 N* 80° 03.54 W
61	ANCIENT MARINER 165' CG Cutter	70'	26° 18.11 N* 80° 03.74 W