



Pine Glades Natural Area Wetland Restoration Project

Natural Areas Program

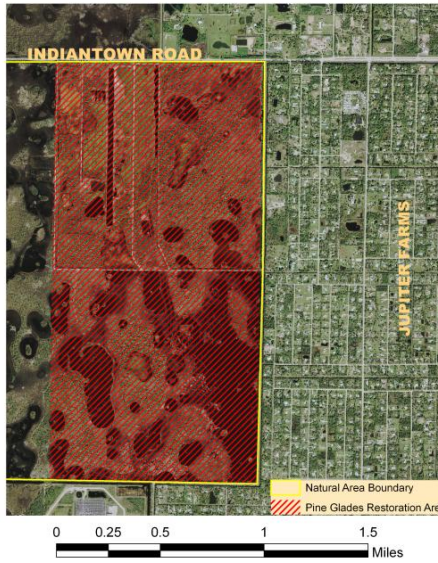
- Over 31,000 acres of County-owned and/or managed lands protected to maintain the diversity of biological communities and species.
- Open from sunrise to sunset, 7 days/week including holidays.
- Available for passive, natural resource-based, recreation activities such as hiking, bird watching, nature study, and photography, as well as for environmental education and scientific research.
- Other recreation uses, such as horseback riding, bicycling, and fishing are permitted in designated areas on a site-specific basis.

Project Area Location

- West of Jupiter Farms, east of Pratt Whitney Road and south of Indiantown Road.

Plants & Animals

- Site contains 5 native ecosystems: mesic flatwoods, wet flatwoods, depression marsh, wet prairie and dome swamp.
- Listed plant species observed on site: meadow jointvetch, many-flowered grass pink, butterfly orchid, catesby's lily, nodding clubmoss, celestial lily, cinnamon fern, royal fern, blue-flowered butterwort, yellow-flowered butterwort, snowy orchid, rose pogonia, lace-lip ladies' tresses, long-lip ladies' tresses, reflexed wild pine, common wild pine, banded wild pine, giant wild pine.
- Listed animals observed on site: Bachman's sparrow, roseate spoonbill, American alligator, limpkin, great egret, little blue heron, snowy egret, tricolored heron, swallow-tailed kite, white ibis, Florida sandhill crane, bald eagle, wood stork, round-tailed muskrat, osprey, red-cockaded woodpecker, glossy ibis, snail kite and American redstart.



The picture above was taken in April 2006 prior to exotic vegetation eradication efforts at the Pine Glades South Project. The picture below was taken at the same location in April 2009, three years after exotic vegetation removal was initiated.



Project Overview

- Pine Glades Natural Area is composed of almost 6,500 acres of high quality pine flatwoods and wetland ecosystems.
- The eastern portion of the Natural Area was heavily impacted by agricultural practices and the construction of berms since the early 1950's. These impacts have allowed melaleuca and other non-native invasive vegetation species to flourish in these 1,280 acres. An extensive restoration project was planned for the area to improve site hydrology and native plant biodiversity.
- Due to the extremely wet nature of the project area, restoration activities can only occur during the annual dry season each spring.
- Restoration activities began at Pine Glades with exotic vegetation removal in spring 2006 and have continued through spring 2009:
 - 576 acres of melaleuca were mechanically removed.
 - 1280 acres of exotic vegetation were chemically treated in multiple treatments.
 - A geo-technical study was completed in spring 2007 to evaluate ways to improve the hydrology within the project areas.
- A 36-inch culvert was installed at Pine Glades South in Spring 2008 to divert excess water during the rainy season that had frequently flooded the project area since the 1950's.
- Several prescribed burns are planned to be completed in 2009 within the restoration area. The burns will assist in reducing levels of exotic vegetation and will encourage seeding by native species.
- Project status through spring 2009:
 - Initial exotic removal is 100% complete within the project areas.
 - Wetland restoration is complete in 50% of the project area.
- In spring 2009, a 150-foot section of berm was removed to restore a more natural water flow over 340 acres.
- Restoration activities in the spring of 2010 through 2012 will occur in the northern portion of the restoration project area and will include the following:
 - Continued follow-up chemical treatment of non-native invasive vegetation.
 - Creation of 35 acres of wetlands and 40 acres of uplands.
 - Removal of over 3 miles of berms and 1 ½ miles of asphalt roads.



Palm Beach County Board of County Commissioners
Department of Environmental Resources Management
2300 North Jog Road - Fourth Floor, West Palm Beach, FL 33411
Phone: 561-233-2400 <http://www.co.palm-beach.fl.us/erm/>

Published June 2009