



Lake Ida Habitat Enhancement

A Chain of Lakes Restoration Project

Chain of Lakes

- Five interconnected freshwater lakes covering a linear distance of 30 miles.
- Begins with Pine Lake, progressing south to Lake Clarke, Lake Osborne, Lake Eden, and Lake Ida.
- Serve, directly or indirectly, as drinking water sources, surface water storage, and wildlife habitat.

Lake Ida

- 121 acres
- Located in Delray Beach, north of Lake Ida Road and east of Interstate 95.

Project Location

- In Lake Ida Park along the west shoreline of Lake Ida in Delray Beach

The Problem

- Wetland habitat in the lake has been lost due to over development and drainage.

The Solution

- Create wetland habitat with vegetative plantings.

Benefits

- Improved freshwater wetland habitat, food source and shelter for fish, birds and invertebrates.
- Improved water quality by removing muck sediments and installing native wetland vegetation to help filter water pollutants

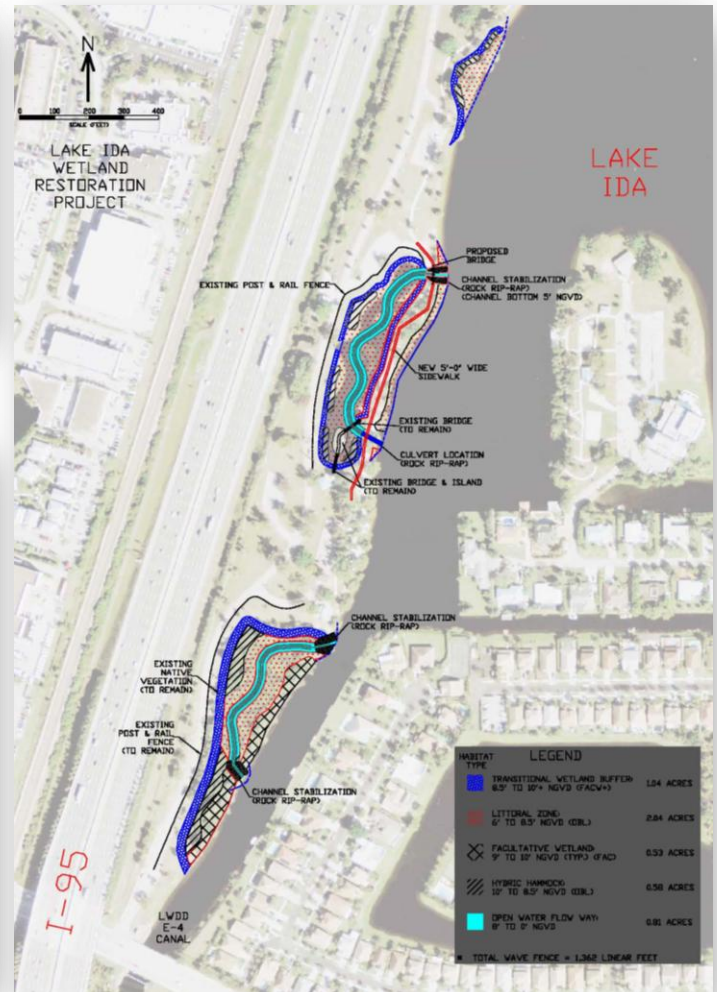
Aerial view of Lake Ida Park



Central Pond Before Restoration



Current Project Plan View



Project Overview

- Create 4 acres of wetland habitat for fisheries and birds.
- Remove exotic vegetation like Brazilian Pepper, Java Plum and Pongam trees.
- Remove muck sediments from the existing pond, grade shoreline and excavate channels to create wetland habitat.
- Install more than 27,000 wetland plants and over 350 wetland trees.
- Install wave fences and rock along portions of the shoreline to stop erosion.
- Install a boardwalk for public access and viewing.
- The project is scheduled to begin in March 2009 and will take approximately three to six months to complete.

Project Partners

Palm Beach County, Florida Fish and Wildlife Conservation Commission, Florida Department of Environmental Protection



Palm Beach County Board of County Commissioners
 Department of Environmental Resources Management
 2300 North Jog Road - Fourth Floor, West Palm Beach, FL 33411
 Phone: 561-233-2400 <http://www.co.palm-beach.fl.us/erm/>

Published March 2009