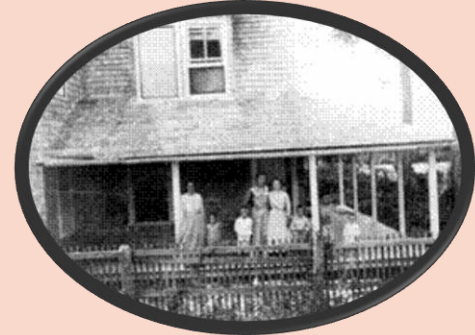


Big Mound City, J.W. Corbett WMA

ERM Technical Series



Dubois Family, Jupiter Inlet

Digging Up Our Past: Archeological Resources of PBC

Guest Speaker: Michele Williams Ph.D., RPA
Florida Public Archeology Network at FAU

Thursday, December 18th ~ 2:30 p.m.

**Palm Beach County Vista Center
2300 North Jog Road West Palm Beach
Room 1E – 58/59**

Have you always been interested in archaeology? Do you "dig" it? Learn about the archaeology in your own backyard with an emphasis on the wealth of archaeological resources in Palm Beach County. Underwater and underfoot, archaeology is everywhere. **Michele Williams** will introduce the basics of archaeology, how it relates to natural lands, and point you towards local "archo-tourist" destinations.

~ • ~

Michele Williams, Ph.D., RPA is the Director and Terrestrial Archaeologist for the Southeastern Region of the Florida Public Archaeology Network. Dr. Williams has participated in digs throughout the southeastern United States for the past 20 years. Her specialty within archeology is the use of plants by prehistoric Native Americans.



The Technical Series, provided by Palm Beach County's Department of Environmental Resources Management, are presentations on topics that are likely to be of interest to staff in all County departments. We encourage you and members of your staff to attend this presentation. For more information, contact Scott Lynch at 561-681-3878 or e-mail slynch@co.palm-beach.fl.us. For directions to the Vista Center, go to <http://www.co.palm-beach.fl.us/erm/contactus/>