

## DISCOVER LOCAL ARTISTS

# 'Reflections & Refractions'

The exhibit "Reflections & Refractions," which runs through June 6 at Palm Beach International Airport in West Palm Beach, features 20 Palm Beach County artists who stimulate viewers' imagination through color and light with photography, painting, sculpture and mixed media.

Artworks were selected by Palm Beach County's Public Art Committee based on merit and how well they reflect the "Reflections & Refractions" theme. The juried exhibitions are open to all artists who live in Palm Beach County. Artwork selected is on loan to Palm Beach County during the exhibition.

Through a grant from Palm Beach County's Cultural Council, HMS Host, an airport concessionaire, helps support Palm Beach County's Art in Public Places exhibition "Destination: Culture" at PBI.

Selected works are exhibited for four months.

Seen by more than 500,000 visitors a month, these exhibitions are on the Palm Beach International Airport's Level 2 in the main terminal, across from Traveler's Lounge. The airport is just west of Interstate 95 between Balvedere Road and Southern Boulevard.

An artists' reception, free and open to the public, is set for March 28 from 5:30 to 7 p.m. — also on Level 2 of the main terminal, across from Traveler's Lounge. Park in short-term Levels 4 through 7. To purchase art in this exhibition, call (561) 233-0235.



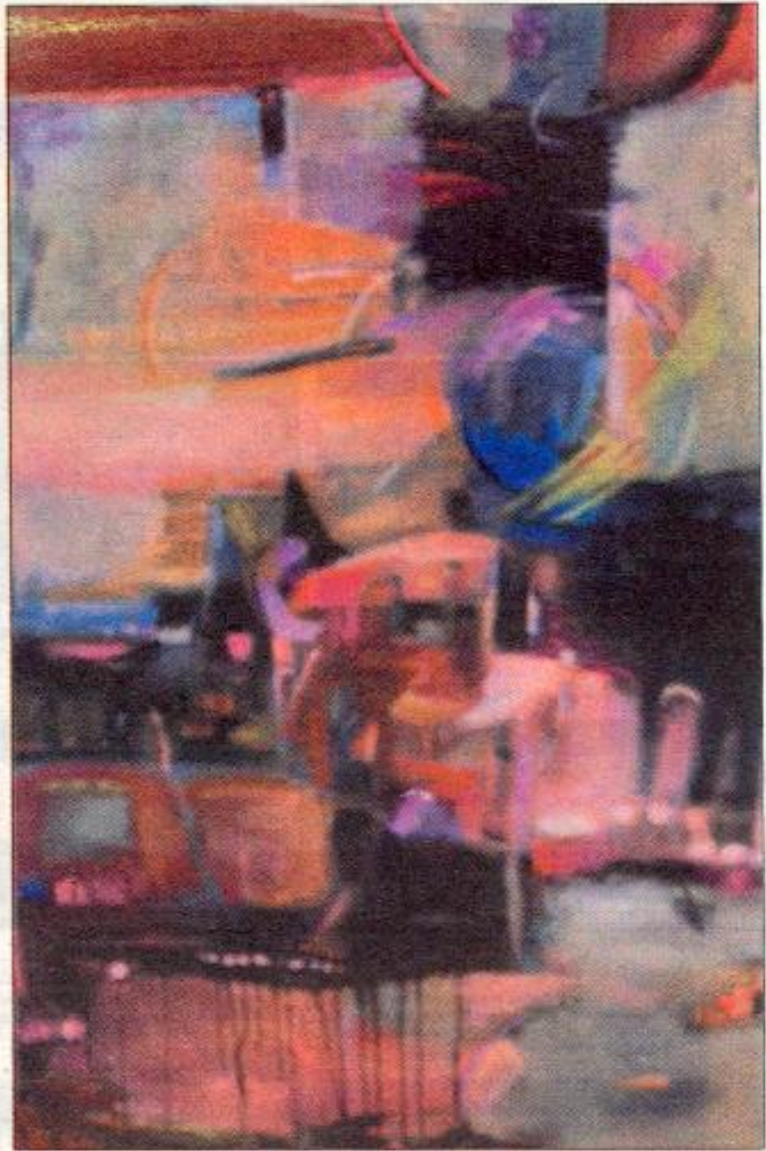
'Museum of Modern Art, No. 2,' above, by Patricia Whiting, left, is an acrylic-on-canvas, 20 by 24 inches, and \$375.



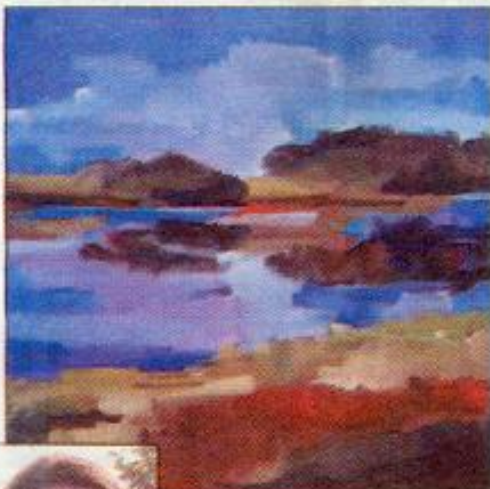
'Reflective Moment,' above, by Seymour Holtzman, right, is a 16-by-20-inch digital matte print and \$100.



'Life Is Difficult,' above, by Irina Ponomareva, right, is a 16-by-20-inch photograph and \$240.



'Illuminated,' far right, by Jane Bazinet, right, is a 44-by-66-inch oil-on-canvas and \$6,800.



'Let's Roll,' above, by Cookie Schwartz, right, is a 24-by-24-inch photograph

