

DISCOVER LOCAL ARTISTS

Local artists works' taking flight at PBI

Last week, *Residences* presented the works of seven local artists featured in "Reflections & Refractions," a show that runs through June 6 at Palm Beach International Airport in West Palm Beach.

This exhibit showcases 20 Palm Beach County artists who stimulate viewers' imaginations through color and light with photography, painting, sculpture and mixed media. This week, we present six more.

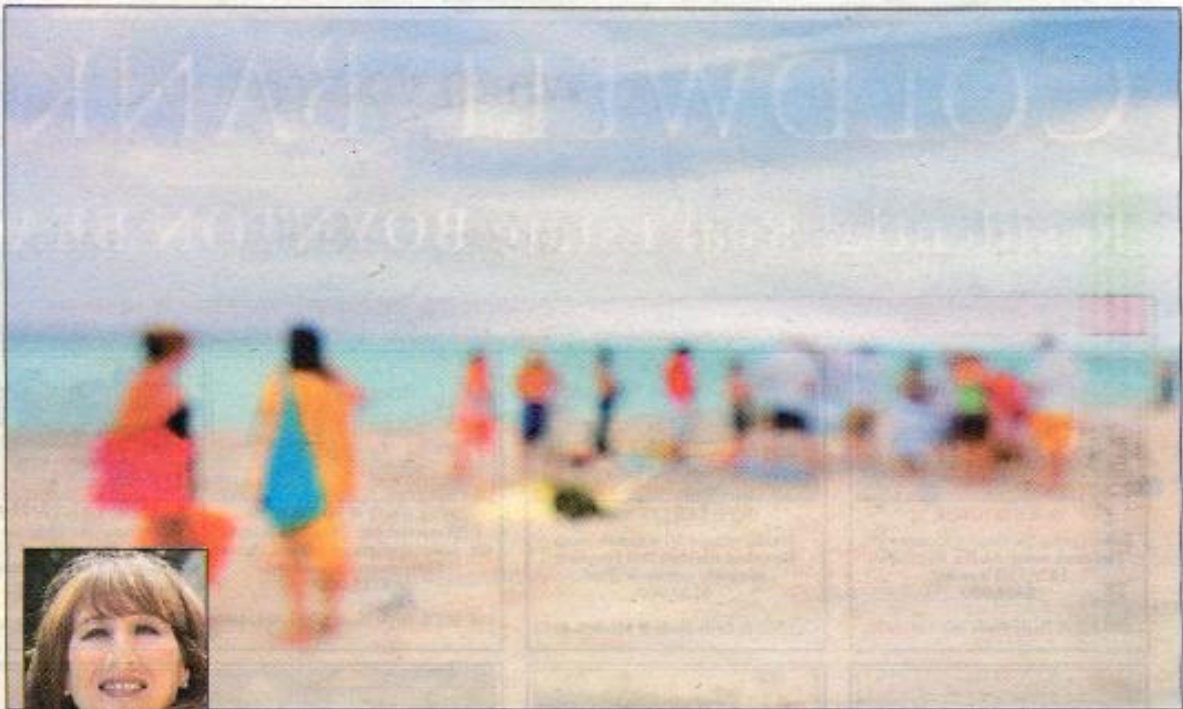
Artworks were selected by Palm Beach County's Public Art Committee based on merit and how well they reflect the "Reflections & Refractions" theme. The juried exhibitions are opened to artists who live in Palm Beach County. Artwork selected is on loan to

Palm Beach County during the exhibition.

Through a grant from Palm Beach County's Cultural Council, HMS Host, an airport concessionaire, helps to support Palm Beach County's Art in Public Places exhibition "Destination: Culture" at PBI. Selected works are exhibited for four months, with changing cultural and travel themes for every exhibition.

Seen by more than 500,000 visitors a month, these exhibitions are on the Palm Beach International Airport's Level 2 in the main terminal, across from Traveler's Lounge. The airport is just west of Interstate 95 between Belvedere Road and Southern Boulevard. An artists' reception, free and open to the public, is set for March 28 from 5:30 to 7 p.m. — also on Level 2 of the main terminal, across from Traveler's Lounge. Park in short-term Levels 4 through 7. To purchase art in this exhibition, call (561) 233-0235.





'Dreamscapes: Beach Series X,' above, by Cheryl Maeder, left, is a 30-by-45-inch archival-print-on-canvas and \$2,500.



Brennan King, above, created 'Still Creek,' right, a 24-by-27-inch oil-on-canvas, priced at \$1,280.



'Uncle Leonard's Goldfish,' far left, by Monica Kustra, left, is a 16-by-20-inch photograph (giclée print), and \$199.

