

PALM BEACH COUNTY
BOARD OF COUNTY COMMISSIONERS
AGENDA ITEM SUMMARY

Meeting Date: February 6, 2007

☒ Consent

☐ Regular

☐ Workshop

☐ Public Hearing

Department: Facilities Development and Operations

I. EXECUTIVE BRIEF

Motion and Title: Staff recommends motion to approve: Change Order No. 24 to the Contract with Catalfumo Construction, Ltd. (R2004-1626) in the amount of \$19,159.10 to change out four (4) double detector check valve (DDCV) assemblies at the Operations & Support Center Facility.

Summary: Change Order No. 24 will replace four 6" DDCV assemblies with 4" DDCV assemblies. There is one assembly for Building 1 (Vehicle Maintenance Facility), two for Building 2 (FDO Building), and one for Building 4 (R&B/TO Building) affected by this change order. Reducing the size of the DDCVs to be installed, allows the owner to benefit from significant cost reductions of the utility connection fees. This change order must be approved by the Board as it exceeds the cumulative limits of the Department Director and the Contract Review Committee (CRC). M/WBE participation for this change order is 0%. When added to the Contractor's participation to date, the resulting M/WBE participation is 27%. The Contractor's M/WBE contract goal is 15%. **(Capital Improvements Division) District 2 (JM)**

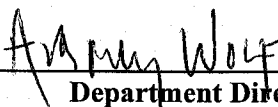
Background and Justification: Reducing the size of the DDCVs to be installed, allows the owner to benefit from significant cost reductions of the utility connection fees. The existing 6" DDCVs will be placed in County stock to be used elsewhere.

Attachments:

1. Location Map
2. Change Order No. 24
3. Budget Availability Statement

Recommended by:



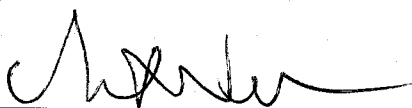


Department Director

1/19/07

Date

Approved by:



County Administrator

1/23/07

Date

II. FISCAL IMPACT ANALYSIS

A. Five Year Summary of Fiscal Impact:

Fiscal Years	2007	2008	2009	2010	2011
Capital Expenditures	\$19,159.10	0	0	0	0
Operating Costs	0	0	0	0	0
External Revenues	0	0	0	0	0
Program Income (County)	0	0	0	0	0
In-Kind Match (County)					
NET FISCAL IMPACT	\$19,159.10				
# ADDITIONAL FTE					
POSITIONS (Cumulative)					

Is Item Included in Current Budget? Yes X No
Budget Account No: Fund 3018 Dept 411 Unit B027 Object 6502
Reporting Category


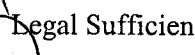
No fiscal impact at this time.


Budget Account No:

B. Recommended Sources of Funds/Summary of Fiscal Impact:

III. REVIEW COMMENTS:

A. OFMB Fiscal and/or Contract Development and Control Comments:


 OFMB
 1/24/07
 pm 1/18/07
 B. Legal Sufficiency:

 Assistant County Attorney
 1/29/07

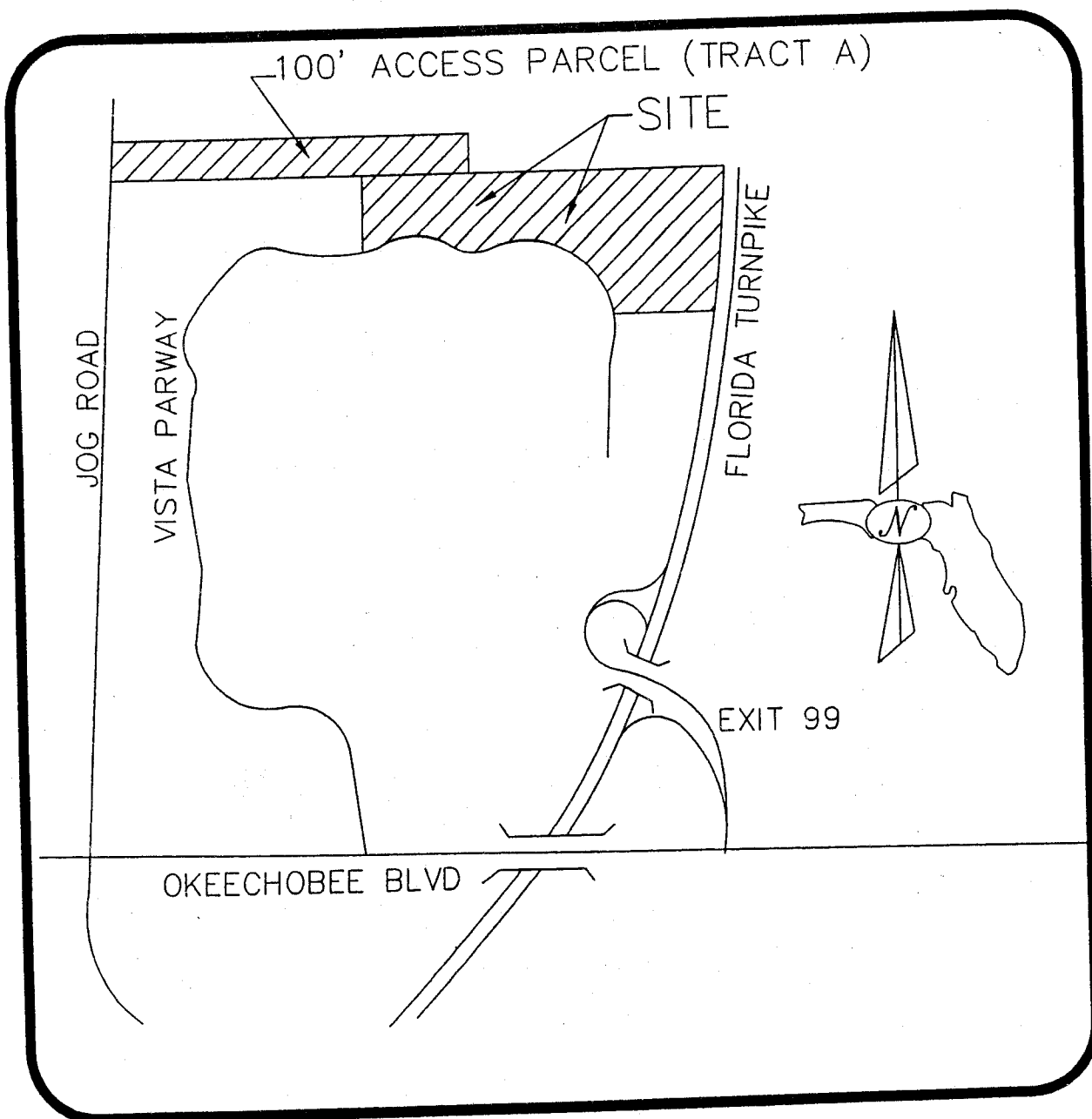

Contract Administrator 1126/07
G. Rose 11/26/07

This item complies with current County policies.

C. Other Department Review:

Department Director

This summary is not to be used as a basis for payment.



LOCATION MAP
(NOT TO SCALE)

CHANGE ORDER BRIEF
Operations & Support Center
Project No. 01245
January 10, 2007

Prime Contractor Catalfumo Construction Ltd.

Change Order No. 24

Change Order Amount \$19,159.10

Changed Contract Time 0 calendar days

Description of CCP:

CCP #206 Rev. 1: Change out four 6" double detector check valves (DDCVs) assemblies and replacing them with 4" assemblies. There is one assembly for Building 1 (Vehicle Maintenance Facility), two for Building 2 (FDO Building), and one for Building 4 (R&B/TO Building) .. \$19,159.10

Explanation and Reason-for-Change Code:

CCP #206 Rev. 1: (O) Reducing the size of the DDCVs to be installed allows the Owner to benefit from significant cost reductions of the utility connection fees..

Reason-for-change codes

D = Differing Site Conditions

E = Errors/Omissions in Design

O = Owner-Initiated

Q = Quantity Adjustments

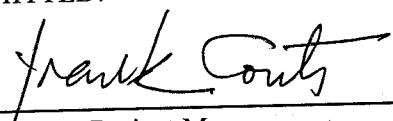
R = Request by another Agency/Outside Party

X = Other (Specify: Direct Owner Purchase)

Z = Zoning/Code/Ordinance Change

Estimated premium value of errors/omissions for this change order: \$0.00.

SUBMITTED:

 1/12/07

Frank Coutts, Project Manager Date
Capital Improvements Division

ATTACHMENT # 2

CHANGE ORDER HISTORY
OPERATIONS & SUPPORT CENTER
PROJECT NO. 01245

CO #	DESCRIPTION	DATE APPROVED	SALES TAX RECOVERY	AMOUNT APPROVED BY DIR	AMOUNT APPROVED BY CRC	AMOUNT APPROVED BY BCC	DAYS APPROVED BY DIR	DAYS APPROVED BY CRC	DAYS APPROVED BY BCC	CODE
1	Deduct for PBC #01245 - 001/002/003 sales tax recovery PO, CCP 8-9-10	6/13/05	(\$498,449.90)							
2	Deduct for PBC #01245 - 7,8,9,10,12,13,14,15 sales tax recovery PO, CCP 19-20	11/04/05	(\$1,565,428.00)							
3	Deduct for PBC #01245 - 001/002/003 sales tax recovery PO, CCP 28-35	2/21/06	(\$706,696.67)							
4	CCP # 36,40,41,42,43,44,45,46,49,51 & 52	3/01/06	(\$1,408,649.87)							
5	CCP # 50,53-55	3/10/06	(\$512,774.34)							
6	CCP # 61-63, 67-69, 71-77	4/04/06	(\$669,794.47)							
7	CCP #78, 80, 81, 82	4/13/06	(\$514,171.44)							
8	CCP #84,85,86,87,88,89 & 90	5/16/06	(\$306,385.69)							
9	CCP #92,93 & 94	6/21/06	(\$77,253.06)							
10	CCP#39,78,96,97,107,110,111,112, 113 & 114	6/21/06	(\$664,358.67)							
11	CCP #115,116,117,118,120 & 126	6/22/06	(\$57,488.22)							
12	CCP # 109	8/01/06	\$58,088.00							
13	CCP #119,120,121,122, 123 & 128	8/10/06	(\$970,879.17)							

CHANGE ORDER HISTORY
OPERATIONS & SUPPORT CENTER
PROJECT NO. 01245

CO #	DESCRIPTION	DATE APPROVED	SALES TAX RECOVERY	AMOUNT APPROVED BY DIR	AMOUNT APPROVED BY CRC	AMOUNT APPROVED BY BCC	DAYS APPROVED BY DIR	DAYS APPROVED BY CRC	DAYS APPROVED BY BCC	CODE
14	CCP #048,058,070 & 101	8/17/06		\$41,055.26						
15	CCP #134,132,133 & 135	8/17/06	(\$469,974.77)							
16	CCP #148, 152, 154, 155, 157, 159, 160, 161 & 162	9/21/06	(\$503,892.04)							
17	CCP #183,184,185 & 187	12/01/06	(\$141,849.89)							
18	CCP #100 & 151	12/01/06		\$49,490.25						
19	CCP #037	12/19/06				\$143,757.60				
20	CCP #164	12/19/06				\$176,457.47				
21	CCP #165, 195, 196, 197, 198, 199, 200, 201, 202, 203 & 204	1/02/07	(\$407,911.63)							
22	CCP #104, 143, 152, 172 & 180	1/09/07		\$8,463.34			30			
23	CCP #170, Rev. 2	Pending			\$99,659.27					
24	CCP #206, Rev. 1	Pending				\$19,159.10				
			TOTAL APPROVED TO DATE	TOTAL \$ BY DIR	TOTAL \$ BY CRC	TOTAL \$ BY BCC	TOTAL DAYS BY DIR	TOTAL DAYS BY CRC	TOTAL DAYS BY BCC	
			(\$9,417,869.83)	\$99,008.85	\$99,659.27	\$339,374.17	30	0	0	
				DIR + CRC DOLLARS TO DATE			DIR+ CRC TOTAL DAYS TO DATE			
				\$198,668.12			30			

PALM BEACH COUNTY
CHANGE ORDER

ISSUED TO: Catalfumo Construction, Ltd.
4300 Catalfumo Way
Palm Beach Gardens, FL. 33410
PROJECT: Operations & Support Center
PROJECT NO. 01245

CHANGE ORDER NO.: 24
REFERENCE CCP NO.: 206 Rev. 1
RESOLUTION NO.: R2004-1626
DISTRICT NO.: 2

The completion date, contract price, and all terms, covenants, and conditions of the above referenced contract, except as duly modified by this and previous Change Orders, if any, shall remain in full force and effect.

DESCRIPTION OF CHANGE:

CCP #206 Rev. 1: Change out four DDCV assemblies from 6" to 4". There is one assembly for Building 1 (Vehicle Maintenance Facility), two for Building 2 (FDO Building), and one for Building 4 (R&B/TO Building) affected by this change order. \$19,159.10
TOTAL **\$19,159.10**

Original Contract	\$ 2,500,000.00
Amendment #1:	\$ 2,676,803.00
Amendment #2:	\$ 8,236,456.00
Amendment #3:	\$28,870,353.00
Previous Change Orders	\$ 518,883.19
Previous Sales Tax COs	(\$ 9,417,869.83)
This Change Order	\$ 19,159.10
ADJUSTED Contract Price:	\$33,408,784.46

Contract Completion Date will be (increased) (decreased)
by 0 calendar days

Contract Notice To Proceed Date: Mar. 01, 2005

Contract Substantial Completion Date: Jan. 08, 2007
ADJUSTED Substantial Completion Date: NA

CONSTRUCTION MANAGER

Execution of this change order acknowledges final settlement of, and releases, all claims for costs and time associated, directly or indirectly, with the above stated modification(s), including all claims for cumulative delays or disruptions resulting from, caused by, or incident to such modification(s), and including any claim that the above stated modification(s) constitutes, in whole or part, a cardinal change to the contract.

The above changes are accepted:

Catalfumo Construction
Construction Manager

By: Edmund E. Mangano

Title: SR VP Date: 1/12/07

DESIGN PROFESSIONAL

The above changes are recommended for approval by the Owner:

BRPH Architects - Engineers, Inc.
Design Professional

By: Malcolm Cooper

Title: CIVIL ENGINEER Date: 1/12/07

PALM BEACH COUNTY

Recommended By:

By: Frank Counts
Title: Project Manager Date: 1/12/07

By: John Cheshire
Title: Director - CID Date: 1/12/07

By: Anthony Wolf
Title: Director - FD&O Date: 1/13/07

By: _____
Legal Sufficiency - CAO Date: _____

Approved By:

By: _____
Addie L. Greene
Title: Chairperson, BCC Date: _____

CONSTRUCTION CHANGE PROPOSAL (CCP)

CCP NUMBER: 206 REV 1
DATE: 1/5/2007
PROJECT NAME: PBC Operations & Support Center
PBC PROJECT NUMBER: 01245
CONTRACT NUMBER: R2004-1626

DESCRIPTION:

Although this CCP does not include a time extension element if the lead time for the material to be installed under this CCP scope affects the CPM critical path we reserve the right to additional time. CPM will be reviewed upon approval of CCP and confirmation of delivery date after order is placed.

Pertinent backup documentation attached hereto for reference.

OVERALL SUBTOTAL	\$ 18,000.00
------------------	--------------

SUBTOTAL	\$ 18,513.00
----------	--------------

TOTAL	\$ 19,159.10
--------------	---------------------

TOTAL	\$ 19,159.10
-------	--------------

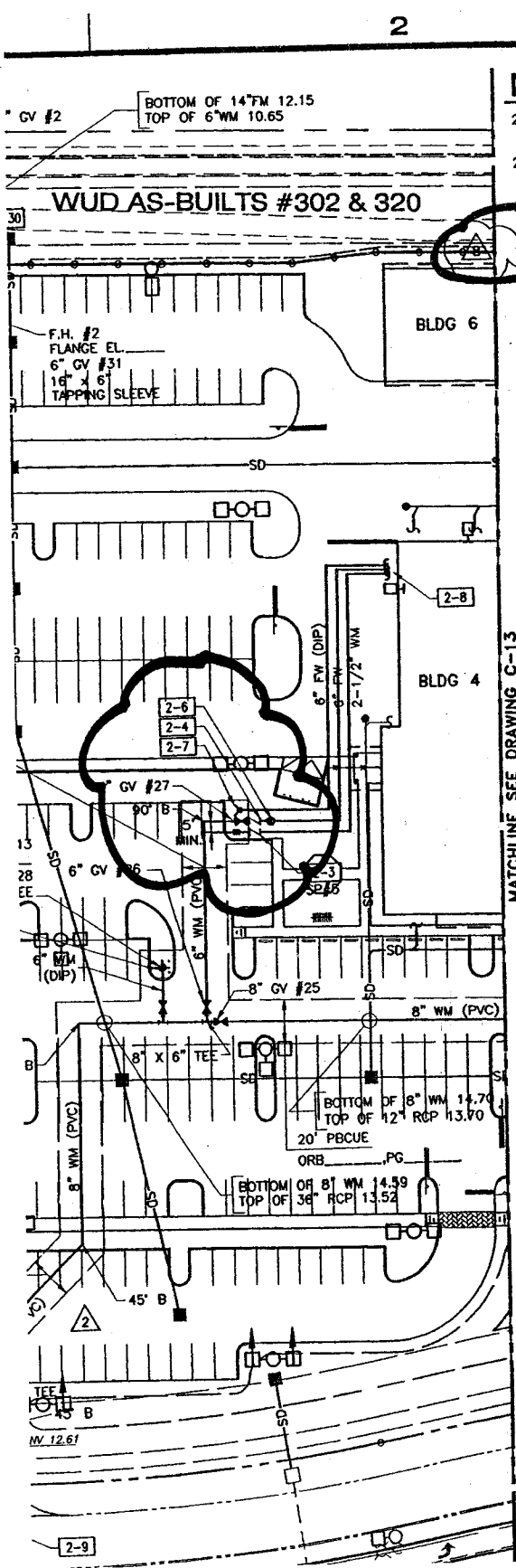
0 DAYS

April 04, 2007 _____ **DATE**

DATE:

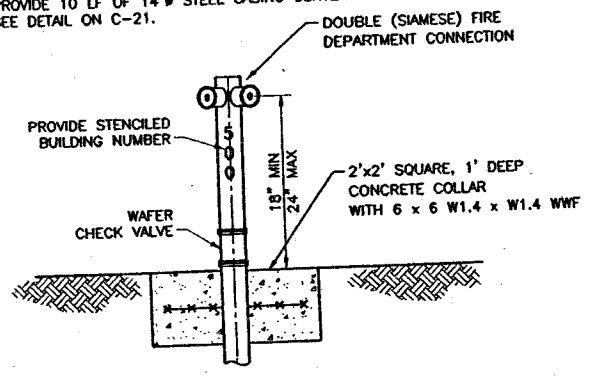
DISTRIBUTION:

Catalfumo Construction, Ltd.
Contractor
Edward M. Catalfumo
1/8/07



NOTES:

- 2-1 PROVIDE FIRE HYDRANT ASSEMBLY WITH 4" BOLLARDS AS REQUIRED. SEE DETAIL ON C-19.
- 2-2 REMOVE PLUG FROM EXISTING 8" WATER LATERAL. PROVIDE 8" x 6" REDUCER AND CONNECT NEW 6" WATER LINE.
- 2-3 PROVIDE 1-1/2" METER AND 2-1/2" REDUCED PRESSURE BACKFLOW PREVENTER. SEE DETAIL ON C-19.
- 2-4 PROVIDE 4" DOUBLE CHECK DETECTOR ASSEMBLY. SEE DETAIL C-20.
- 2-5 PROVIDE 6" x 1/2" TAPPING SLEEVE AND VALVE.
- 2-6 PROVIDE POST INDICATOR VALVE. SEE DETAIL ON C-15.
- 2-7 PROVIDE FIRE DEPARTMENT CONNECTION. SEE DETAIL ON C-12.
- 2-8 SEE PLUMBING DRAWINGS FOR CONTINUATION.
- 2-9 PLUG EXISTING SEWER STUB-OUT AT MANHOLE.
- 2-10 REMOVE PLUG FROM EXISTING 8" SANITARY SEWER STUB AND CONNECT NEW 8" SANITARY SEWER LINE.
- 2-15 PROVIDE SANITARY SEWER MANHOLE.
- 2-19 PROVIDE 6" PLUG WITH 2" BLOWOFF.
- 2-26 ADJUST EXISTING VALVE BOXES TO BE FLUSH WITH FINISHED PAVEMENT GRADE.
- 2-29 WHERE WALL IS LOCATED BETWEEN MAINS, CONTRACTOR SHALL LOCATE PBCWUD MAINS PRIOR TO INSTALLING THE COLUMN FOUNDATIONS. THE COLUMN FOUNDATIONS SHALL BE LOCATED MID-POINT BETWEEN THE FORCE MAIN AND THE WATER MAIN.
- 2-30 PROVIDE 10 LF OF 14" STEEL CASING CENTER UNDER PRECAST WALL. SEE DETAIL ON C-21.

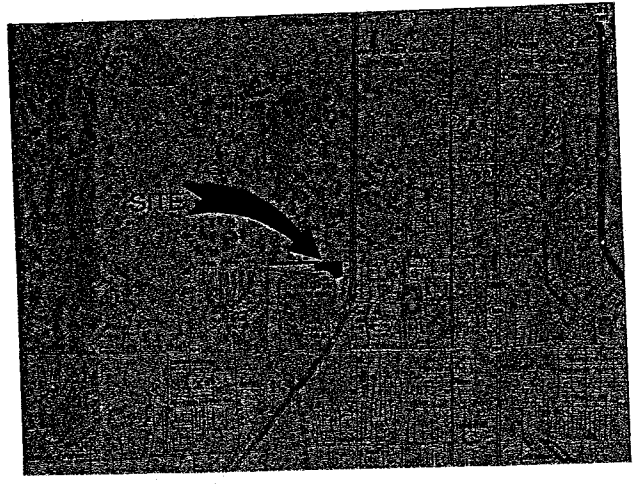


NOTE: PAINT PIPING WITH 1 COAT PRIMER AND 2 COATS OF ALIPHATIC POLYURETHANE COATING COLOR NO. 11105 (RED)

FIRE DEPARTMENT CONNECTION (FIRE MAIN)

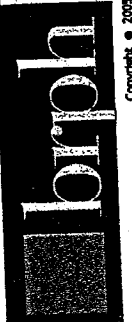
DETAIL

NTS



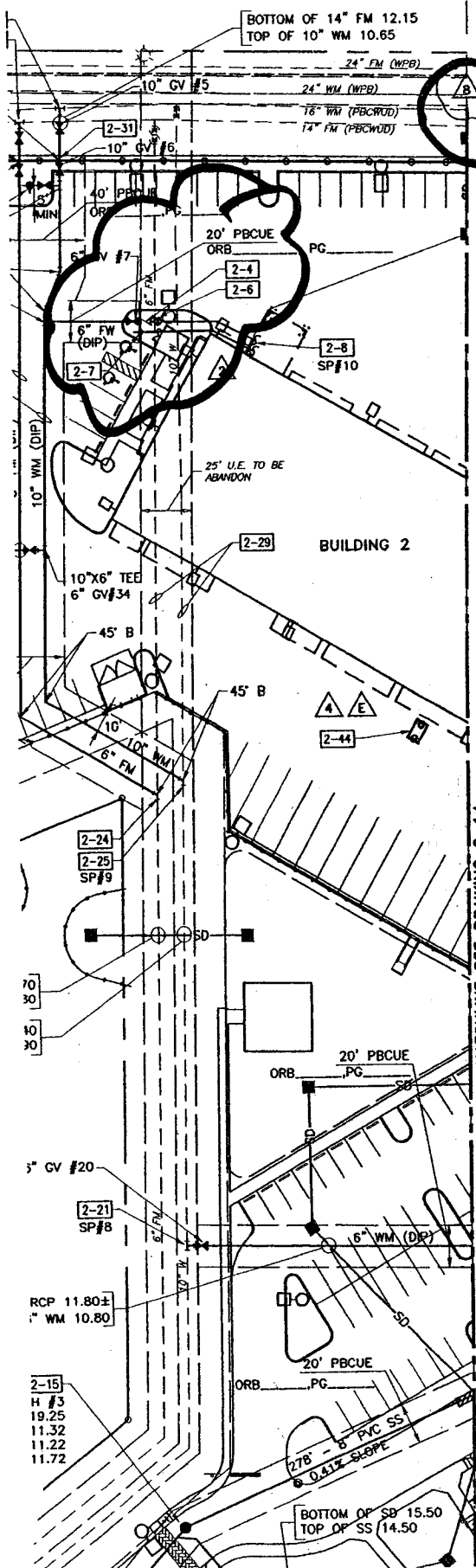
CHK	BY	REVISION	DATE	Δ
DMT	PRO	100% SUBMITTAL DOCUMENTS	5/5/05	1
DMT	LDP	FINAL PLAN SET COMMENTS	5/31/05	2
DMT	LDP	PERMIT COMMENTS, LP & R DWGS	7/22/05	4
MTC	JUL	REVISED PER CLIENT REQUEST	12/06/06	8

Architects, Engineers, Constructors
Offices in Melbourne, West Palm Beach, Orlando, Fort Myers, Atlanta, Greenville
Board of Architecture License No. AA C000149
Board of Professional Engineers License No. 149
These plans are produced by Federal Copyright protection. Unauthorized use may result in an infringement action.



Copyright © 2005

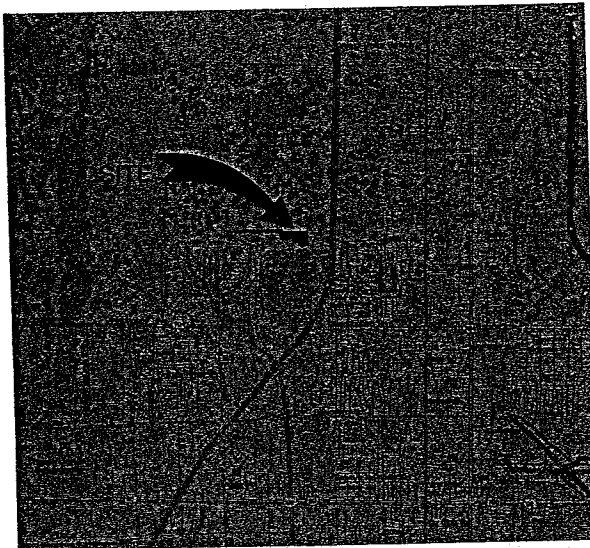
OPERATIONS & SUPPORT CENTER
SITE WORK
PALM BEACH COUNTY
UTILITY PLAN



NOTES:

- PROVIDE FIRE HYDRANT ASSEMBLY WITH 4" BOLLARDS AS REQUIRED. SEE DETAIL ON C-1.
- 2-4 PROVIDE 4" DOUBLE CHECK DETECTOR ASSEMBLY. SEE DETAIL ON C-20.
- 2-5 PROVIDE 16" x 6" TAPPING SLEEVE AND VALVE.
- 2-6 PROVIDE POST VALVE. SEE DETAIL ON C-15.
- 2-7 PROVIDE FIRE DEPARTMENT CONNECTION. SEE DETAIL ON C-12.
- 2-8 SEE PLUMBING DRAWINGS FOR CONTINUATION.
- 2-10 REMOVE PLUG FROM EXISTING 8" SANITARY SEWER STUB AND CONNECT NEW 8" SANITARY SEWER LINE.
- 2-11 PROVIDE 6" SANITARY SEWER LATERAL. SEE DETAIL ON C-22.
- 2-12 PROVIDE 6" FORCE MAIN.
- 2-13 PROVIDE 10" WATER MAIN.
- 2-14 PROVIDE 14" x 6" TAPPING SLEEVE AND VALVE.
- 2-15 PROVIDE SANITARY SEWER MANHOLE. SEE DETAIL ON C-22.
- 2-20 MILL AND OVERLAY EXISTING PAVEMENT AS SHOWN (MINIMUM OF 50' IN BOTH DIRECTIONS OF OPEN CUT). SEE DETAIL ON C-17.
- 2-21 PROVIDE 10" x 6" TAPPING SLEEVE AND VALVE.
- 2-22 PROVIDE 10" x 8" TAPPING SLEEVE AND VALVE.
- 2-23 PROVIDE 16" x 10" TAPPING SLEEVE AND VALVE AND PRESSURE PIPE TIE IN (BYPASS) SEE DETAIL ON C-20.
- 2-24 TIE INTO EXISTING 6" FM. COORDINATE SHUT DOWN WITH PBCWUD AND THE NPBICD.
- 2-25 TIE INTO EXISTING 10" WM AFTER CLEARANCE HAS BEEN ISSUED, COORDINATE SHUT DOWN WITH PBCWUD AND THE NPBICD.
- 2-26 ADJUST EXISTING VALVE BOXES TO BE FLUSH WITH FINISHED PAVEMENT GRADE.
- 2-27 REMOVE EXISTING 8" SANITARY SEWER STUB AND CONNECT NEW 8" SANITARY SEWER LINE. GROUT ANNUAL SPACE WITH NON-SHRINK GROUT.
- 2-29 REMOVE EXISTING 6" FM AND 10" WM AFTER RELOCATIONS HAVE BEEN CLEARED FOR USE.
- 2-30 PROVIDE 10 LF OF 14" 9 STEEL CASING CENTERED UNDER PRECAST WALL. SEE DETAIL ON C-21.
- 2-31 PROVIDE 10 LF OF 20" 9 STEEL CASING CENTERED UNDER PRECAST WALL. SEE DETAIL ON C-21.
- 2-43 PROVIDE UNDERGROUND 30,000 GALLON FIRE PUMP TESTING TANK. SEE PLUMBING DRAWINGS FOR WATER SUPPLY. PROVIDE SHOP DRAWINGS FOR UNDERGROUND TANK FOR REVIEW AND APPROVAL.
- 2-44 PROVIDE 1000 GAL CAPACITY OIL/SAND INTERCEPTORS. MUST MEET PBCWUD REQUIREMENTS.
- 2-45 PROVIDE 125 GAL CAPACITY OIL INTERCEPTOR MUST MEET PBCWUD REQUIREMENTS.

MATCHLINE SEE DRAWING C-14



LOCATION MAP

NTS

S22, T43S, R42E



DATE	REVISION	BY	CHK
1	100% SUBMITTAL DOCUMENTS	PRO	DMT
2	FINAL PLAN SET COMMENTS	LDP	DMT
4	PERMIT COMMENTS, LP & IR DWGS	LDP	DMT
6	ITEMS IN THE PERMIT SET	JUL	MTG
8	REVISED PER CLIENT REQUEST	JUL	MTG

Architects, Engineers, Constructors
 Offices in Melbourne, West Palm Beach,
 Orlando, Fort Myers, Atlanta, Greenville

Board of Architecture License No. 44,000,048
 Board of Professional Engineers License No. 443

These plans are prepared by Federal Copyright protection.
 Unauthorized use may result in an infringement action.



Copyright © 2005

3275 Saddle Blvd., Melbourne, Florida 32909 321-254-7944 321-254-4793 F

OPERATIONS & SUPPORT CENTER
 SITE WORK
 PALM BEACH COUNTY
 UTILITY PLAN

M. Cooper
 12/15/06



- 2-1 PROVIDE FIRE HYDRANT TAP WITH 2" COLLARS AS REQUIRED. SEE DETAIL ON C-19.
- 2-4 PROVIDE 4" DOUBLE CHECK DETECTOR ASSEMBLY. SEE DETAIL ON C-20.
- 2-5 PROVIDE 6" X 16" TAPPING SLEEVE AND VALVE.
- 2-6 PROVIDE TEST INDICATOR VALVE. SEE DETAIL ON C-19.
- 2-7 PROVIDE FIRE DEPARTMENT CONNECTION. SEE DETAIL ON C-12.
- 2-8 SEE PLUMBING DRAWINGS FOR CONTINUATION.
- 2-11 PROVIDE 6" SANITARY SEWER LATERAL. SEE DETAIL ON C-22.
- 2-15 PROVIDE SANITARY SEWER MANHOLE. SEE DETAIL ON C-22.
- 2-16 PROVIDE 5/8" METER AND 1" REDUCED PRESSURE BACKFLOW PREVENTER FOR PROPOSED EQUIPMENT VEHICLE WASH. SEE DETAIL ON C-19.
- 2-24 PROVIDE 16" X 8" TAPPING SLEEVE AND VALVE.
- 2-30 PROVIDE 10 LF OF 14"Ø STEEL CASING CENTERED UNDER PRECAST WALL. SEE DETAIL ON C-21.
- 2-31 PROVIDE 10 LF OF 20"Ø STEEL CASING CENTERED UNDER PRECAST WALL. SEE DETAIL ON C-21.
- 2-44 PROVIDE 1000 OIL/SAND INTERCEPTOR MUST MEET PCBWUD REQUIREMENTS MODEL 48-CPS OR APPROVED EQUAL.
- 2-45 PROVIDE UNDERGROUND FUEL PIPING
- 2-46 12,000 GALLON UNDERGROUND DIESEL STORAGE TANK WITH DUAL FEED TO THE GENERATOR AND ABOVE GRADE WP OUTLET.
- 2-47 ABOVE GRADE OUTLET PER MANUFACTURER'S REQUIREMENTS FOR FILLING AND WITHDRAWING OPERATIONS.



1" = 10' HORIZONTAL
1" = 5' VERTICAL



S22, T43S, R42E



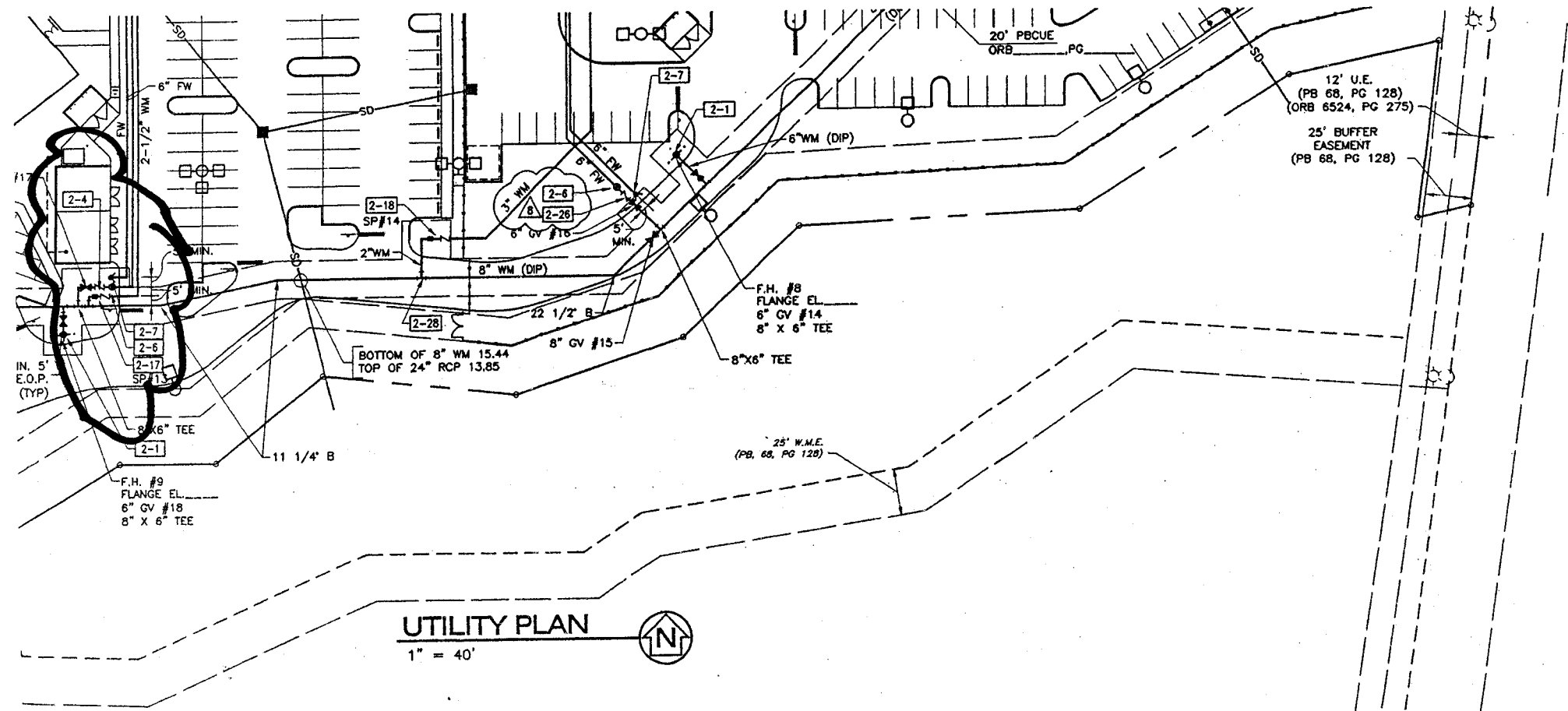
Architects, Engineers, Constructors
Offices in Melbourne, West Palm Beach,
Orlando, Fort Myers, Atlanta, Greenville

Life

1000

OPERATIONS & SUPPORT CENTER
SITE WORK
PALM BEACH COUNTY

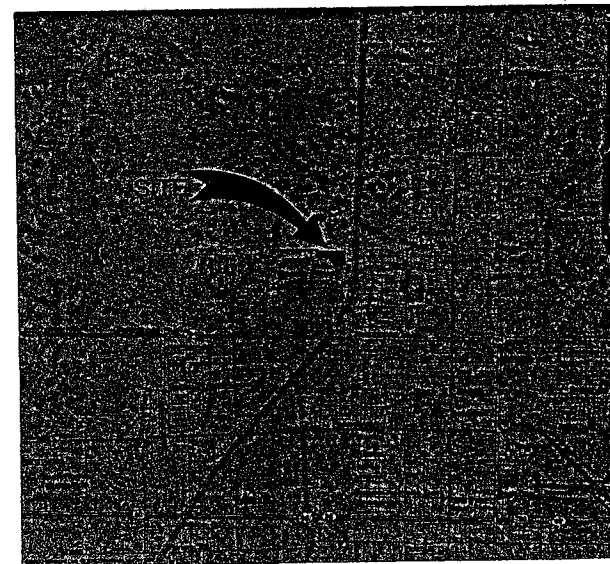
M. Co
12/15



1 1/4" SQ OPERATING
NUT WITH DRILLED AND
TAPPED OIL HOLE

— CENTER BARREL
— SET SCREWS
— LOWER BARREL
— FIRE LINE

— REFER TO DWGS
FOR PIPE SIZE



LOCATION MAP

NOTES:

- 2-1 PROVIDE FIRE HYDRANT ASSEMBLY WITH 4" BOLLARDS AS REQUIRED. SEE DETAIL ON C-19.
- 2-2 REMOVE PLUG FROM EXISTING 8" WATER LATERAL AND CONNECT NEW 8" WATER LINE.
- 2-4 PROVIDE 4" DOUBLE CHECK DETECTOR ASSEMBLY. SEE DETAIL ON C-20.
- 2-5 PROVIDE 4" INDICATOR VALVE. SEE DETAIL ON C-15.
- 2-7 PROVIDE FIRE DEPARTMENT CONNECTION. SEE DETAIL ON C-12.
- 2-8 SEE PLUMBING DRAWINGS FOR CONTINUATION.
- 2-9 PLUG EXISTING SEWER STUB-OUT AT MANHOLE.
- 2-17 PROVIDE 1-1/2" METER AND 2-1/2" REDUCED PRESSURE BACKFLOW PREVENTER. SEE DETAIL ON C-19.
- 2-18 PROVIDE 2" METER AND 3" REDUCED PRESSURE BACKFLOW PREVENTER. SEE DETAIL ON C-19.
- 2-20 MILL AND OVERLAY EXISTING PAVEMENT AS SHOWN (MINIMUM OF 50' IN BOTH DIRECTIONS OF OPEN CUT). SEE DETAIL ON C-17.
- 2-26 ADJUST EXISTING VALVE BOXES TO BE FLUSH WITH FINISHED PAVEMENT GRADE.
- 2-26 PROVIDE 6" DOUBLE CHECK DETECTOR ASSEMBLY. SEE DETAIL ON C-20.

WUD #04-198

Terry Lilling

From: Terry Lilling
Sent: Monday, November 13, 2006 9:31 AM
To: 'Frank Coutts'; 'Malcom Cooper (BRPH)'
Cc: James G. Mansfield; Jeff Rabold; 'Van C. Williams (Van@deevaninc.com)'; 'Jackie E.. McNevin'
Subject: FW: OSC - Backflows/meter
Importance: High

11-13-06

Frank/Malcolm,

Not sure if you have responded to the below or not...if you have please forward to me. Formal CCP will be to you this week.

Thanks,

TSL

From: Terry Lilling
Sent: Tuesday, November 07, 2006 4:00 PM
To: Frank Coutts; 'Malcolm Cooper'
Cc: 'Cris Vigil'; James G. Mansfield; Jeff Rabold; 'Van C.. Williams'; 'Jackie E.. McNevin'
Subject: FW: OSC - Backflows/meter

11-07-06

Frank/Malcolm,

Below please find the cost for swapping out the DDCV's to 4" from 6". The price is for each. There will be no credit for the equipment currently installed - it will be turned over to the County at the end of the project.

I'll prepare the formal CCP for approval but if pricing is acceptable please respond as such and I will have Deevan proceed accordingly with paperwork to follow upon issuance of formal C/O from PBC CID.

Thanks,

CATALFUMO CONSTRUCTION, LTD.

Terry S. Lilling
Project Manager
561-296-1008 site
561-644-0271 cellular

11/13/2006

From: Van C.. Williams [mailto:vwilliams@deevaninc.com]
Sent: Tuesday, November 07, 2006 3:18 PM
To: Terry Lilling
Subject: RE: OSC - Backflows/meter

Terry,
Our supplier will not take back existing 6" DDCV's due to the length of time they have been installed. The price to change out the 6" for a 4" is \$4500 per assembly.

Van C. Williams
President
DEEVAN Inc.
(561) 844-5518
(561) 844-5641 Fax
(561) 718-8185 Cell

-----Original Message-----

From: Terry Lilling [mailto:TLilling@Catalfumo.com]
Sent: Monday, October 23, 2006 11:41 AM
To: Jackie E.. McNevin; Van C.. Williams
Cc: James G. Mansfield; Jeff Rabold
Subject: FW: OSC - Backflows/meter

Van/Jackie,

Please see the below regarding a forthcoming Field Bulletin based on what Jackie and I spoke about last week. Once the FB is received I will forward it to you via fax.

For now please arrange for pricing prior to issuance of FB. If you have any questions please call.

Thanks,

CATALFUMO CONSTRUCTION, LTD.

Terry S. Lilling
Project Manager
561-296-1008 site
561-644-0271 cellular

From: Malcolm Cooper [mailto:MTC@brph.com]
Sent: Monday, October 23, 2006 8:25 AM
To: Terry Lilling
Cc: Frank Coutts; sasha@fastrackmci.com
Subject: RE: OSC - Backflows/meter

All DCDV assemblies will be changed to 4" except the south end of VMF which is to remain at 6". All meters to remain the same. We will issue a Field Bulletin to that effect. What will the re-stocking fee be for the 4" DCDV assemblies?

11/13/2006

From: Terry Lilling [mailto:TLilling@Catalfumo.com]
Sent: Friday, October 20, 2006 4:31 PM
To: Malcolm Cooper
Cc: Frank Coutts; James G. Mansfield; Jeff Rabold
Subject: OSC - Backflows/meter

Malcolm,

To follow up on our conversation yesterday what is the latest with the potential for swapping out Building 1 and 4 backflows from 6" down to 4" and upsizing the water meter on Building 2 from 2" to 3"?

Thanks,

CATALFUMO CONSTRUCTION, LTD.
"Quality From The Ground Up"

Terry S. Lilling
Project Manager

Cellular: 561-644-0271

Main office:

4300 Catalfumo Way
Palm Beach Gardens, FL 33410
561-694-3000 Phone
561-691-5280 Fax

Field office:

2555 Vista Parkway
West Palm Beach, FL 33411
561-296-1008 Phone
561-296-1249 Fax

E-mail: tlilling@catalfumo.com

Website: www.catalfumo.com

11/13/2006

SCHEDULE 1

LIST OF PROPOSED M/WBE SUBCONTRACTORS
CHANGE ORDER WORK

PROJECT NAME: VISTA OPERATIONS & SUPPORT CENTER

PROJECT NO: R2004-1626

NAME OF GENERAL CONTRACTOR: CATALFUMO CONSTRUCTION, Ltd.

CONTACT PERSON: TERRY LILLING

CCP# 206 Rev. 1

PHONE NO: 561-296-1008

DDCV Changes

Change out all existing 6" for 4" assemblies

Name, Address and Phone Number of M/WBE	Type of Work To Be Performed	Subcontract Amount			
		Black	Hispanic	Woman	Other (SBE)
DeeVan, Inc. 1450-A Kinetic Road Lake Park, FL 33403 (561) 844-5518	Change out all existing 6" for 4" assemblies			\$0.00	

Total Price: \$19,159.10 Total Value of M/WBE Participation: \$0.00 M/WBE Participation %: 0.0%

**FACILITIES DEVELOPMENT & OPERATIONS
BUDGET AVAILABILITY STATEMENT**

REQUEST DATE: 1/11/07

REQUESTED BY: Frank Coutts

PHONE: 233-0258

FAX: 233-0270

PROJECT TITLE: Operations & Support Center

PROJECT NO.: 01245

ORIGINAL CONTRACT AMOUNT:

BCC RESOLUTION#: R2004-1626

REQUESTED AMOUNT: \$19,159.10

DATE:

~~CSA~~ or CHANGE ORDER NUMBER: 24

CONSULTANT/CONTRACTOR: Catalfumo Construction, Ltd.

PROVIDE A BRIEF STATEMENT OF THE SCOPE OF SERVICES TO BE PROVIDED BY THE CONSULTANT/CONTRACTOR:

Change out four DDCV assemblies from 6" TO 4". There is one assembly for Building 1 (Vehicle Maintenance Facility), two for Building 2 (FDO Building), and one for Building 4 (R&B/TO Building) affected by this change order.

CONSTRUCTION	<u>\$19,159.10</u>
PROFESSIONAL SERVICES	<u> </u>
STAFF COSTS	<u> </u>
MISC.	<u> </u>
TOTAL	<u>\$19,159.10</u>

*** By signing this BAS your department agrees to these staff costs and your account will be charged upon receipt of this BAS by FD&O. Unless there is a change in the scope of work, no additional staff charges will be billed.*

BUDGET ACCOUNT NUMBER (IF KNOWN)

FUND: 3018 DEPT: 411 UNIT: 6027 OBJ: 6502

FUNDING SOURCE (CHECK ALL THAT APPLY):

☐ AD VALOREM ☐ OTHER

☐ FEDERAL/DAVIS BACON

BAS APPROVED BY: _____

DATE: _____

ENCUMBRANCE NUMBER: KPO 091005-1487

Revised 03/30/04

ATTACHMENT #3