

II. FISCAL IMPACT ANALYSIS

A. Five Year Summary of Fiscal Impact:

Fiscal Years	2008	2009	2010	2011	2012
Capital Expenditures	\$ -0-	-0-	-0-	-0-	-0-
Operating Costs	-0-	-0-	-0-	-0-	-0-
External Revenues	-0-	-0-	-0-	-0-	-0-
Program Income (County)	-0-	-0-	-0-	-0-	-0-
In-Kind Match (County)	-0-	-0-	-0-	-0-	-0-
NET FISCAL IMPACT	\$ -0-	-0-	-0-	-0-	-0-

ADDITIONAL FTE POSITIONS (Cumulative) _____

Is Item Included in Current Budget? Yes _____ No _____
 Budget Acct No.: Fund ___ Dept. ___ Unit ___ Object ___
 Program _____

B. Recommended Sources of Funds/Summary of Fiscal Impact:

This item has no additional fiscal impact.

C. Departmental Fiscal Review: P. A. Ward 3/10/08

III. REVIEW COMMENTS

A. OFMB Fiscal and/or Contract Dev. and Control Comments:

 John Dink 4/15/08 Dan J. Jacobs 4/17/08
 OFMB Contract Dev. and Control
 (initials) 4/15/08 4/10/08 4/9/08 4/17/08

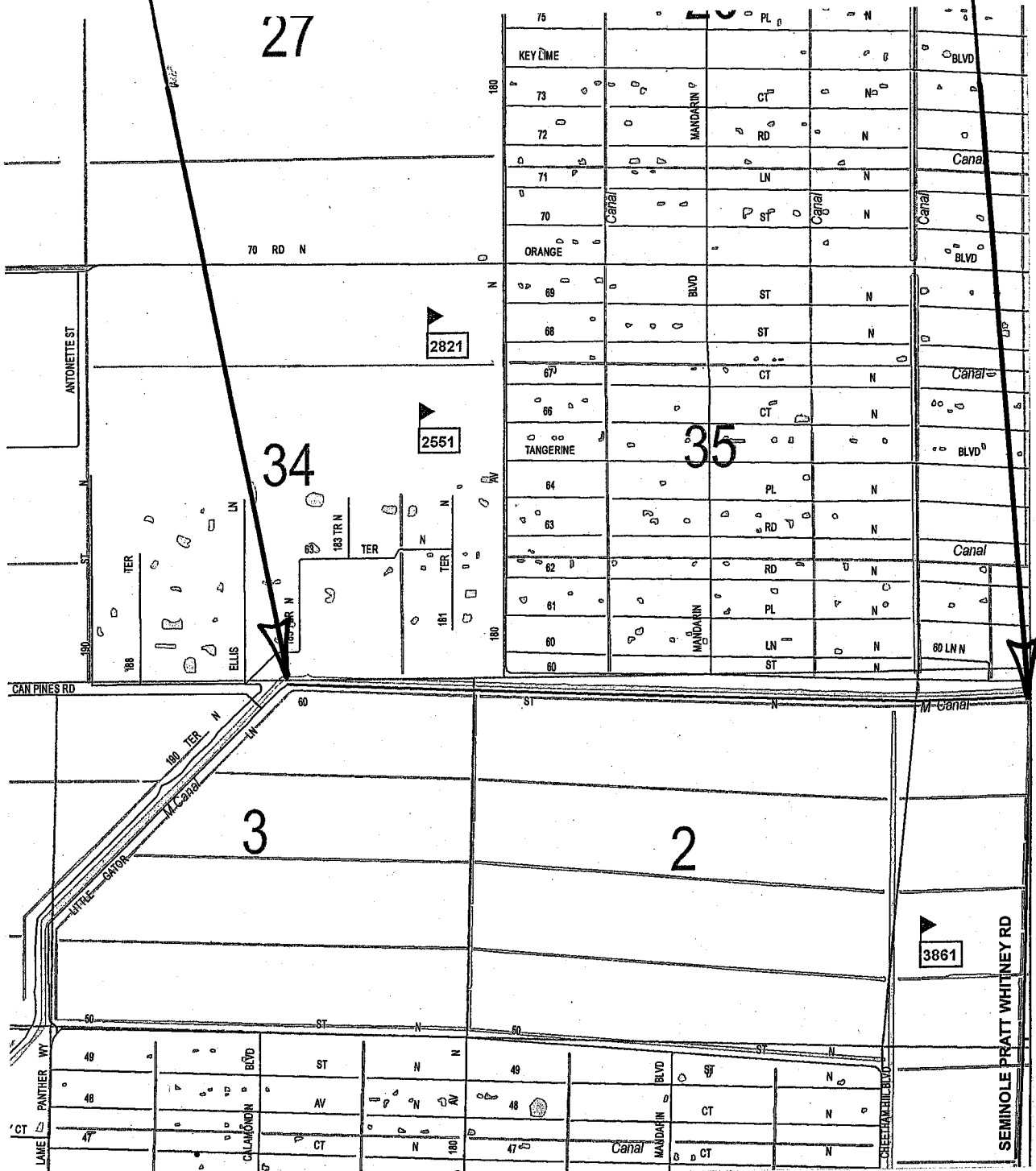
B. Approved as to Form and Legal Sufficiency:
 Paul F. S. 4/18/08
 Assistant County Attorney

C. Other Department Review:

 Department Director

This summary is not to be used as a basis for payment.
 I:\WP\AgendaPage2\Agnpgtwo2008\No Impact

**PROJECT LOCATION
60TH STREET NORTH
FROM "M" CANAL TO
SEMINOLE PRATT WHITNEY ROAD
MAINTENANCE MAP
PROJECT NO. 2004132**



LOCATION SKETCH

RESOLUTION NO. _____

RESOLUTION OF THE BOARD OF COUNTY COMMISSIONERS OF PALM BEACH COUNTY, FLORIDA, TO APPROVE THE RECORDATION/FILING OF A MAINTENANCE MAP - SPECIFIC PURPOSE SURVEY, FOR 60TH STREET NORTH, FROM THE "M" CANAL, EAST TO SEMINOLE PRATT WHITNEY ROAD, SECTIONS 1, 2 AND 3, TOWNSHIP 43 SOUTH, RANGE 40 EAST, WITH THE CLERK OF THE CIRCUIT COURT OF AND FOR PALM BEACH COUNTY, FLORIDA

WHEREAS, the 60th Street North, from the "M" Canal, East to Seminole Pratt Whitney Road, Maintenance Map – Specific Purpose Survey has been submitted to the Board of County Commissioners for approval for filing for records; and

WHEREAS, the Road and Bridge Division Director has certified that Palm Beach County has maintained this area of 60th Street North for four years, as required by Florida Statute 95.361.

NOW, THEREFORE, BE IT RESOLVED BY THE BOARD OF COUNTY COMMISSIONERS OF PALM BEACH COUNTY, FLORIDA, that:

1. The foregoing recitals are hereby reaffirmed and ratified.
2. The Chairperson of the Board and the County Engineer are hereby authorized to sign the Specific Purpose Survey (Maintenance Map) and the Clerk is authorized to sign same.

The foregoing Resolution was offered by Commissioner _____ who moved its adoption. The motion was seconded by Commissioner _____ and upon being put to a vote, the vote was as follows:

Addie L. Greene, Chairperson	-
John F. Koons, Vice Chairman	-
Karen T. Marcus	-
Robert J. Kanjian	-
Mary McCarty	-
Burt Aaronson	-
Jess R. Santamaria	-

RESOLUTION NO. _____

The Chairperson thereupon declared the Resolution duly passed and adopted
this _____ day of _____, 200_____.

APPROVED AS TO FORM AND
LEGAL SUFFICIENCY:

PALM BEACH COUNTY, FLORIDA
BY ITS' BOARD OF COUNTY
COMMISSIONERS:

SHARON R. BOCK, CLERK AND
COMPTROLLER

County Attorney

By: _____
Deputy Clerk