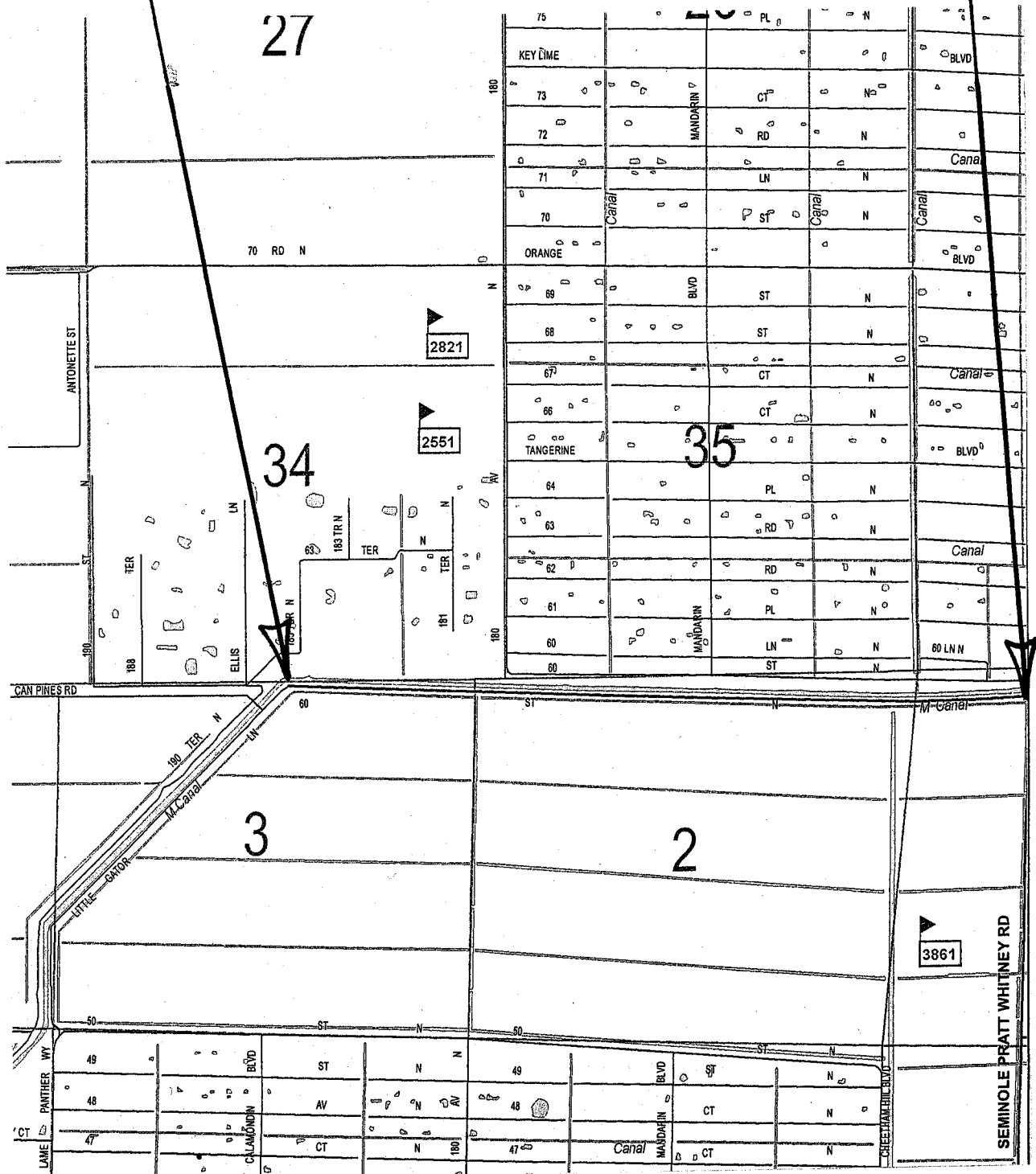


**PROJECT LOCATION
60TH STREET NORTH
FROM "M" CANAL TO
SEMINOLE PRATT WHITNEY ROAD
MAINTENANCE MAP
PROJECT NO. 2004132**



LOCATION SKETCH

RESOLUTION NO. _____

RESOLUTION OF THE BOARD OF COUNTY COMMISSIONERS OF PALM BEACH COUNTY, FLORIDA, TO APPROVE THE RECORDATION/FILING OF A MAINTENANCE MAP - SPECIFIC PURPOSE SURVEY, FOR 60TH STREET NORTH, FROM THE "M" CANAL, EAST TO SEMINOLE PRATT WHITNEY ROAD, SECTIONS 1, 2 AND 3, TOWNSHIP 43 SOUTH, RANGE 40 EAST, WITH THE CLERK OF THE CIRCUIT COURT OF AND FOR PALM BEACH COUNTY, FLORIDA

WHEREAS, the 60th Street North, from the "M" Canal, East to Seminole Pratt Whitney Road, Maintenance Map – Specific Purpose Survey has been submitted to the Board of County Commissioners for approval for filing for records; and

WHEREAS, the Road and Bridge Division Director has certified that Palm Beach County has maintained this area of 60th Street North for four years, as required by Florida Statute 95.361.

WHEREAS, Florida Statute **95.361 Roads presumed to be dedicated**, states that when a road has been maintained or repaired continuously and uninterruptedly for four (4) years by the County, the road shall be deemed to be dedicated to the public to the extent in width that has been actually maintained. The dedication shall vest all right, title, easement and appurtenances in and to the road in the County; and

WHEREAS, the Maintenance Map, shall be filed at the office of the clerk of the circuit court of the County where the road is located. The Maintenance Map shall recite on it that the road is vested in the County and shall be duly certified by the Chairperson and Clerk of the Board of County Commissioners of the County. Said filing shall be prima facie evidence of ownership by the County.

NOW, THEREFORE, BE IT RESOLVED BY THE BOARD OF COUNTY COMMISSIONERS OF PALM BEACH COUNTY, FLORIDA, that:

1. The foregoing recitals are hereby reaffirmed and ratified.
2. The Chairperson of the Board and the County Engineer are hereby authorized to sign the Specific Purpose Survey (Maintenance Map) and the Clerk is authorized to sign same.

The foregoing Resolution was offered by Commissioner _____ who moved its adoption. The motion was seconded by Commissioner _____ and upon being put to a vote, the vote was as follows:

Addie L. Greene, Chairperson	-
John F. Koons, Vice Chairman	-
Karen T. Marcus	-
Robert J. Kanjian	-
Mary McCarty	-
Burt Aaronson	-
Jess R. Santamaria	-

The Chairperson thereupon declared the Resolution duly passed and adopted this _____ day of _____, 200_____.

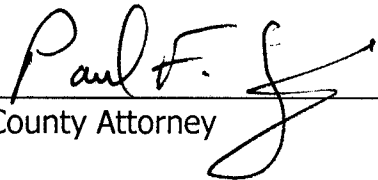
APPROVED AS TO FORM AND
LEGAL SUFFICIENCY:

PALM BEACH COUNTY, FLORIDA
BY ITS' BOARD OF COUNTY
COMMISSIONERS:

SHARON R. BOCK, CLERK AND
COMPTROLLER

By: _____

County Attorney



By: _____

Deputy Clerk