

**PALM BEACH COUNTY  
BOARD OF COUNTY COMMISSIONERS**

**AGENDA ITEM SUMMARY**

**Meeting Date:** January 13, 2009                       Consent                       Regular  
     Workshop                       Public Hearing

**Department**

**Submitted By:**                      Environmental Resources Management  
**Submitted For:**                      Environmental Resources Management

**I. EXECUTIVE BRIEF**

**Motion and Title:** Staff recommends motion to adopt: a Resolution to establish the Erosion Control Line (ECL) between Department of Environmental Protection reference monuments R-60 through R-69 for the Singer Island Shore Protection Project.

**Summary:** The Florida Statutes require an ECL be established to delineate the boundary between the upland properties and State-owned submerged lands when coastal projects below the mean high water line are proposed. The mean high water line survey used to establish the ECL and survey drawings have been completed. Upon execution of the Resolution, a State Hearing Officer will conduct a public workshop/hearing, then submit a recommendation to the Director of State Lands.     District 1 (SF)

**Background and Justification:** The shoreline along the north end of Singer Island between Reference Monuments R-60.5 and R-69 has been designated by the state as "critically eroded" and, has been determined to be eligible for state funding assistance for erosion control projects. Since 2001 the County has conducted six dune restoration projects to help stabilize the shoreline and provide storm protection to upland infrastructure. A feasibility study conducted in 2002 evaluated multiple engineering alternatives for shoreline protection and the environmental impacts each alternative may create. This study identified offshore breakwaters as the best alternative for shoreline protection. The project design is now complete and the permitting process is currently underway. Establishment of the ECL is a required component of the State permitting process for the Singer Island Shore Protection Project.

The survey work for this project has been done by Betsy Lindsey, a local SBE under contract to Humiston and Moore Engineering through Task Order 0878-01 approved by the Contract Review Committee on November 19, 2008.

**Attachments:**

- 1. Resolution
- 2. ECL Survey

**Recommended by:** Richard E. Walsh                      12/21/08  
    Department Director                      Date

**Approved by:** [Signature]                      1/7/09  
    County Administrator                      Date

**II. FISCAL IMPACT ANALYSIS**

**A. Five Year Summary of Fiscal Impact:**

<b>Fiscal Years</b>	<b>2009</b>	<b>2010</b>	<b>2011</b>	<b>2012</b>	<b>2013</b>
<b>Capital Expenditures</b>	_____	_____	_____	_____	_____
<b>Operating Costs</b>	_____	_____	_____	_____	_____
<b>External Revenues</b>	_____	_____	_____	_____	_____
<b>Program Income (County)</b>	_____	_____	_____	_____	_____
<b>In-Kind Match (County)</b>	_____	_____	_____	_____	_____
<b>NET FISCAL IMPACT</b>	* <u>See below</u>				
<b># ADDITIONAL FTE POSITIONS (Cumulative)</b>	_____	_____	_____	_____	_____
<b>Is Item Included in Current Budget?</b>	Yes _____		No <u>X</u> _____		
<b>Budget Account No.:</b>	<b>Fund</b> _____	<b>Department</b> _____	<b>Unit</b> _____	<b>Object</b> _____	
	<b>Program</b> _____				

**B. Recommended Sources of Funds/Summary of Fiscal Impact:**

\* No fiscal impact associated with the resolution.

**C. Department Fiscal Review:** *JP*

**III. REVIEW COMMENTS**

**A. OFMB Fiscal and /or Contract Dev. and Control Comments:**

*Jim Dink* 1-5-09  
 OFMB 12/30/06 Adv 12/29

*Jim J. Jacoby* 1/5/09  
 Contract Development and Control

**B. Legal Sufficiency:**

*Mon J*  
 Assistant County Attorney

**C. Other Department Review:**

\_\_\_\_\_  
 Department Director

**RESOLUTION NO. R-2008-**

**RESOLUTION OF THE BOARD OF COUNTY COMMISSIONERS OF PALM BEACH COUNTY, FLORIDA, REQUESTING THAT THE STATE OF FLORIDA, DEPARTMENT OF ENVIRONMENTAL PROTECTION, ACCEPT AND APPROVE THE SURVEY ESTABLISHING AN EROSION CONTROL LINE FOR THE SINGER ISLAND SHORE PROTECTION PROJECT BETWEEN DEP MONUMENTS R-60 THROUGH R-69.**

**WHEREAS**, approximately 1.5 acres of the shoreline located between Ocean Reef Park and J. D. Macarthur Beach State Park (DEP reference monuments R-60 through R-69) continues to erode, there is often no dry beach in front of the dune in this area, and the foundations and integrity of beach front properties in the area are threatened by such erosion; and

**WHEREAS**, Palm Beach County (the "County") intends to commence a project, known as the Singer Island Shore Protection Project (the "Project"), to build breakwaters offshore in this area to prevent further beach erosion; and

**WHEREAS**, the Project will provide improved shore protection, environmental habitat, and recreational benefits for the residents and the general public; and

**WHEREAS**, the Project is part of the federally authorized Palm Beach County shore protection project and is consistent with the recommendations of the County's Beach Management Plan; and

**WHEREAS**, pursuant to Chapter 161, Florida Statutes, the Project cannot commence until an Erosion Control Line is established to delineate the boundary between the upland properties and State-owned submerged land; and

**WHEREAS**, the County has surveyed the shoreline in this area, has established an Erosion Control Line, and desires for the Board of Trustees of the Internal Improvement Trust Fund to accept and approve the survey attached and incorporated herein as **Exhibit A**.

**NOW, THEREFORE, BE IT RESOLVED BY THE BOARD OF COUNTY COMMISSIONERS OF PALM BEACH COUNTY, FLORIDA, that:**

1. The Palm Beach County Board of County Commissioners requests that the Board of Trustees of the Internal Improvement Trust Fund accept and approve

the survey attached as **Exhibit A**, which establishes the Erosion Control Line for the Singer Island Shore Protection Project.

The foregoing Resolution was offered by Commissioner \_\_\_\_\_, who moved its adoption. The motion was seconded by Commissioner \_\_\_\_\_, and upon being put to a vote, the vote was as follows:

Commissioner John F. Koons, Chairman	-
Commissioner Burt Aaronson, Vice Chairman	-
Commissioner Karen T. Marcus	-
Commissioner Shelley Vana	-
Commissioner Mary McCarty	-
Commissioner Jess R. Santamaria	-
Commissioner Addie L. Greene	-

The Chairman thereupon declared the Resolution duly passed and adopted this \_\_\_\_\_ day of \_\_\_\_\_, 2008.

PALM BEACH COUNTY, FLORIDA, BY ITS  
BOARD OF COUNTY COMMISSIONERS

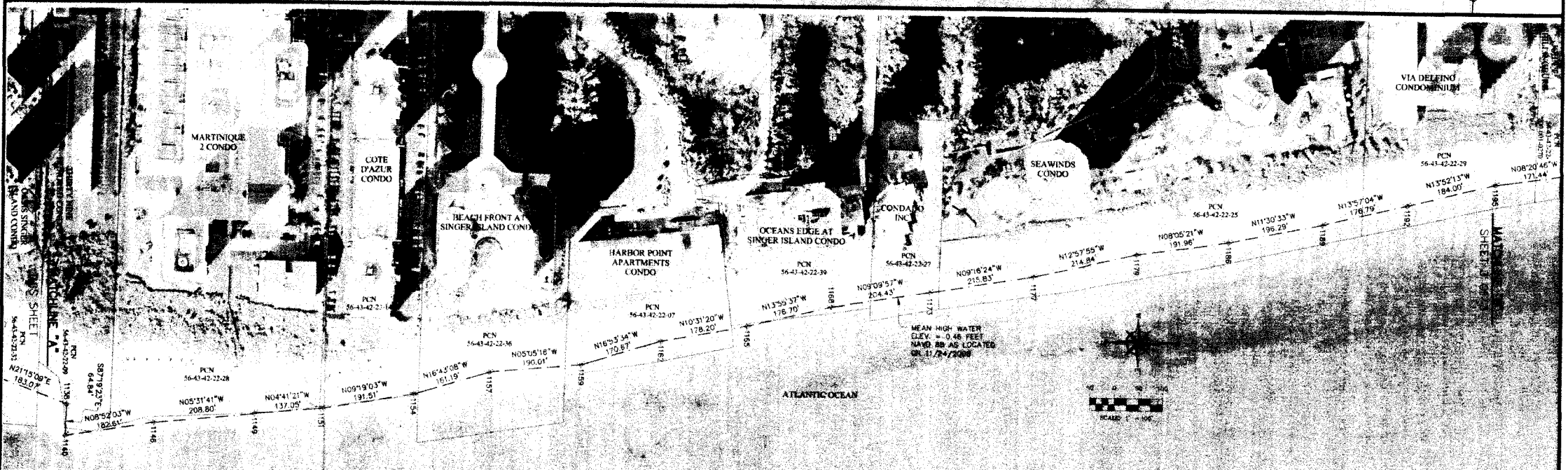
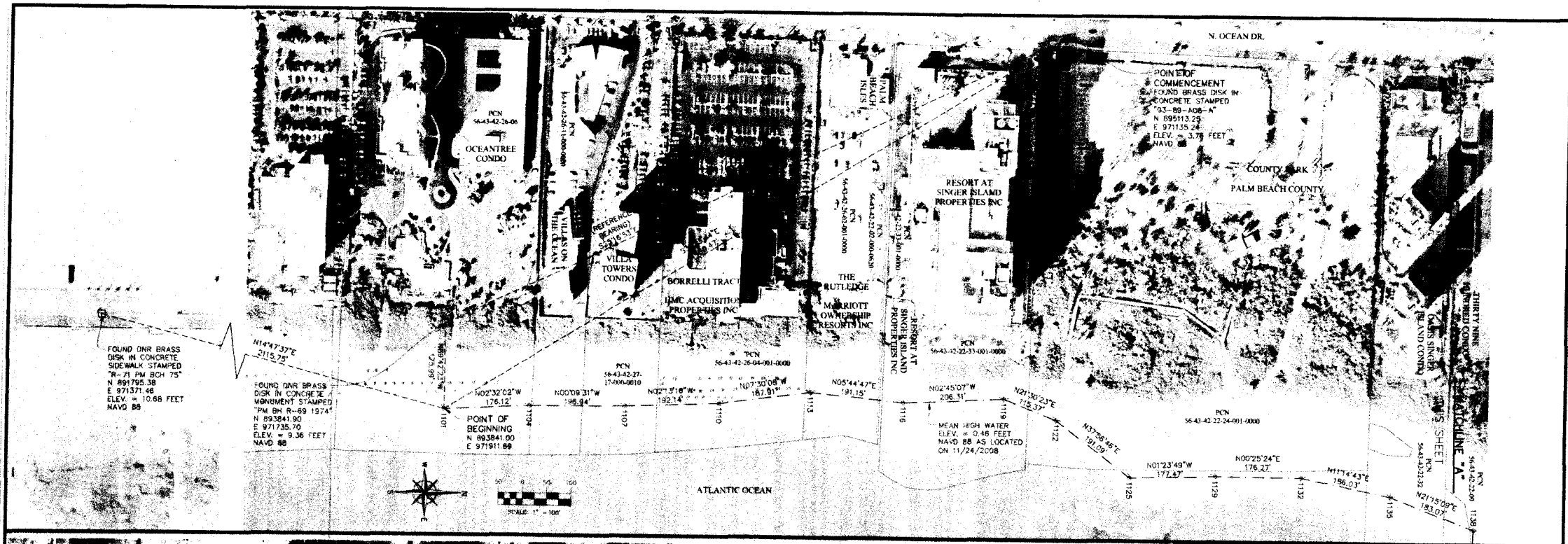
SHARON R. BOCK, CLERK & COMPTROLLER

By: \_\_\_\_\_  
Deputy Clerk

APPROVED AS TO FORM  
AND LEGAL SUFFICIENCY

By: \_\_\_\_\_  
County Attorney



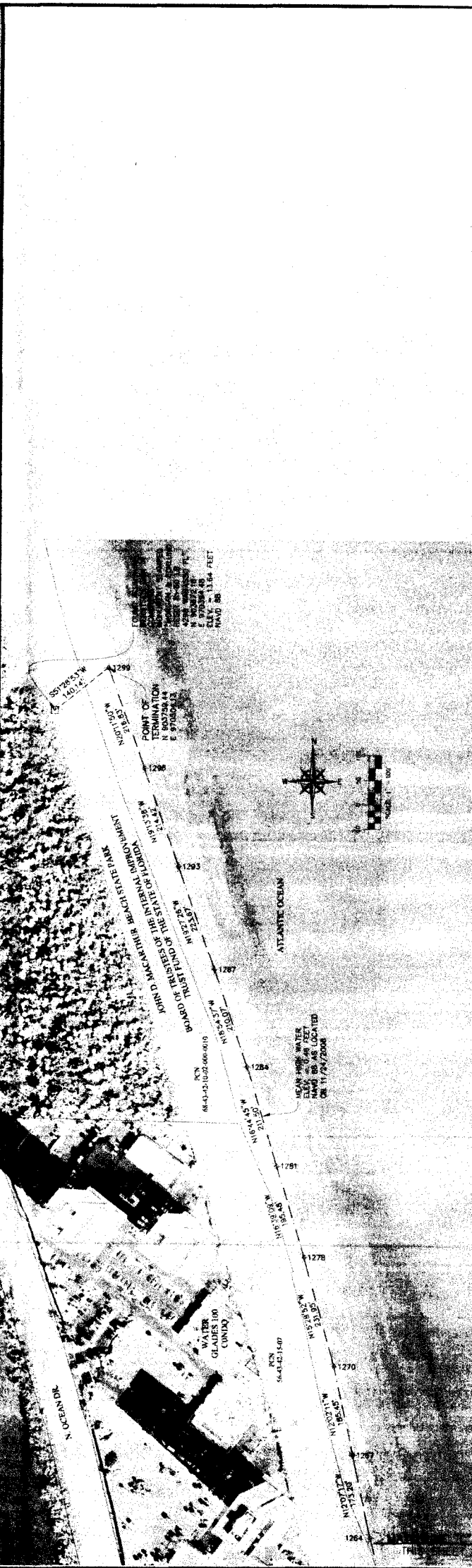
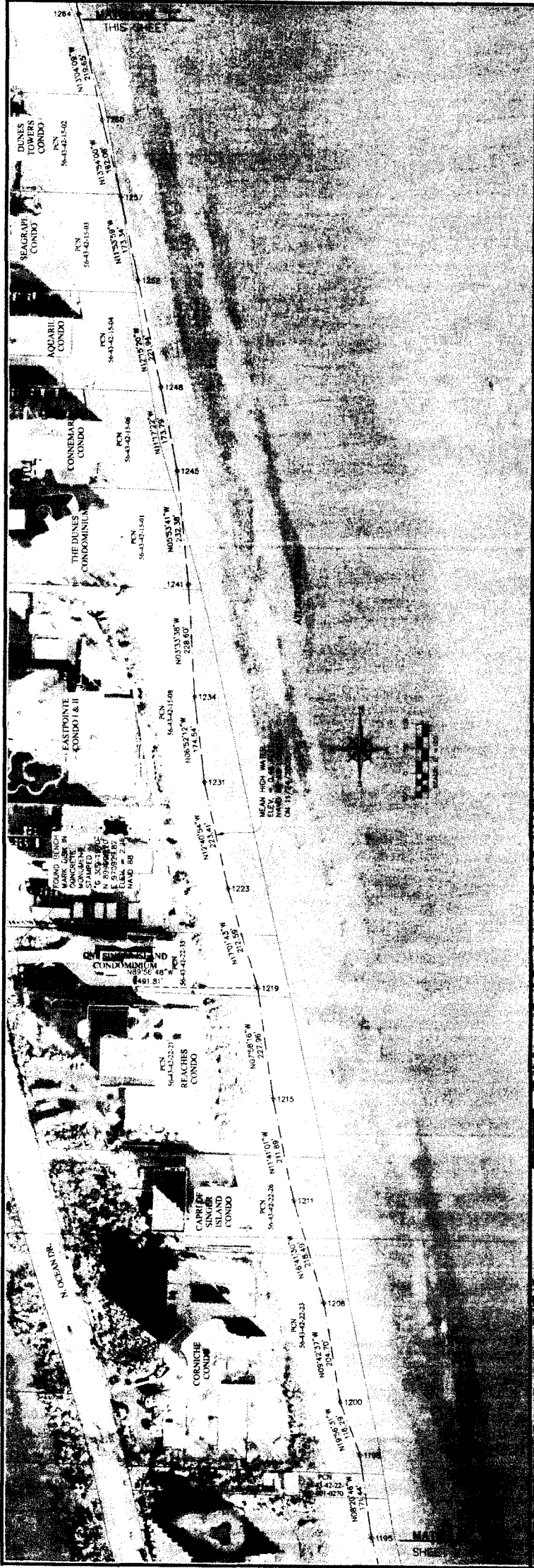


**MEAN HIGH WATER LINE SURVEY**  
 MEAN HIGH WATER LINE BETWEEN MONUMENTS R-60 AND R-69  
 PALM BEACH COUNTY, FLORIDA

DATE	REVISIONS
11/26/2008	SCALE 1" = 100'
	FIELD BOOK
	DRAWN BY
	CHECKED BY

**B** BETSY LINDSAY, INC.  
 SURVEYING AND MAPPING  
 7907 SW JACK JAMES DRIVE, STUART, FL 34987  
 (772)286-5793 (772)286-9333 FAX  
 LICENSED BUSINESS NO 6852





**B** BETSY LINDSAY, INC.  
SURVEYING AND MAPPING  
7907 SW JACK JAMES DRIVE STUART, FL 34997  
(772) 286-5753 (772) 286-5633 FAX  
LIC. # 12100  
SHEET 1 OF 1

DATE	REVISIONS	DATE	BY

SCALE: AS SHOWN  
FIELD BOOK: [ ]  
DRAWN BY: [ ]  
CHECKED BY: [ ]

**MEAN HIGH WATER LINE SURVEY**  
MEAN HIGH WATER LINE BETWEEN MONUMENTS R-60 AND R-69  
PALM BEACH COUNTY, FLORIDA