

Agenda Item is over 50 pages can be reviewed in the Minutes Department.

Agenda Item #: 3-C-6

**PALM BEACH COUNTY
BOARD OF COUNTY COMMISSIONERS
AGENDA ITEM SUMMARY**

Meeting Date: February 3, 2009 Consent Regular
 Workshop Public Hearing
Department:
Submitted By: Engineering & Public Works Department
Submitted For: Roadway Production Division

I. EXECUTIVE BRIEF

Motion and Title: Staff recommends motion to approve: A Task Authorization to the Annual Agreement R2008-0164 in the amount of \$101,697.38 with Erdman Anthony of Florida, Inc. for professional services.

SUMMARY: Approval of this Task Authorization will provide the professional services necessary for the preparation of design plans and construction bid documents for Congress Avenue and Park Avenue Intersection Improvements.

District 1 (PK)

Background and Justification: On February 5, 2008, the Board of County Commissioners (Board) approved an Annual Agreement R2008-0164 with Erdman Anthony of Florida, Inc. (EAI) to provide professional services required for Countywide Intersection Projects. Palm Beach County now desires EAI to prepare design plans and construction bid documents for the Congress Avenue and Park Avenue Intersection Improvements (Project) as detailed in Exhibit "A" of the attached Task Authorization. The Small Business Enterprise (SBE) goal for the Project is 15%. The SBE participation achieved for this Task Authorization is 50.74%. The fee, as detailed in Exhibit "A" of the attached Task Authorization, has been negotiated as just and reasonable compensation as follows:

Basic Services (Lump Sum)	\$ 68,235.28	(Roadway, Drainage and Signal Design).
Reimbursable Expenses (Not to Exceed).....	\$26,099.10	(Survey, Geotechnical, Permit Fees and Printing).
Optional Services (Not to Exceed).....	<u>\$ 7,363.00</u>	(Subsurface Utility Exploration and Legal Descriptions).
Total:	<u>\$101,697.38</u>	

After reviewing the attached Task Authorization and finding it in proper order, staff recommends the Board's approval.

Attachments:

1. Location Map
2. Task Authorization with Exhibits and Certificate of Insurance (2)
3. Project Work Schedule

Recommended by: [Signature] 12/29/08
Division Director Date

Approved By: [Signature] 1/9/09
County Engineer Date

II. FISCAL IMPACT ANALYSIS

A. Five Year Summary of Fiscal Impact:

Fiscal Years	2009	2010	2011	2012	2013
Capital Expenditures	\$142,378	-0-	-0-	-0-	-0-
Operating Costs	-0-	-0-	-0-	-0-	-0-
External Revenues	-0-	-0-	-0-	-0-	-0-
Program Income (County)	-0-	-0-	-0-	-0-	-0-
In-Kind Match (County)	-0-	-0-	-0-	-0-	-0-
NET FISCAL IMPACT	\$142,378	-0-	-0-	-0-	-0-
# ADDITIONAL FTE POSITIONS (Cumulative)					

Is Item Included in Current Budget? Yes X No
 Budget Acct No.: Fund 3501 Dept. 361 Unit 1195 Object 6505
 Program

B. Recommended Sources of Funds/Summary of Fiscal Impact:


Road Impact Fee Zone 1 Fund
 Park Avenue W and Congress Ave Intersection Imp

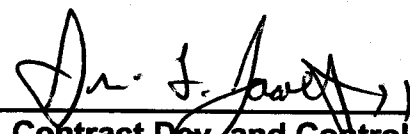
New Task Authorization - Basic Services	\$ 68,235.28
Reimbursables	\$ 26,099.10
Optional Services	\$ 7,363.00
Total Authorization	\$101,697.38
Staff Costs - Roadway Production	\$ 20,340.00
Right of Way	\$ 5,085.00
Engineering Services	\$ 5,085.00
Traffic	\$ 10,170.00
Fiscal Impact	\$142,377.38

C. Departmental Fiscal Review: 

III. REVIEW COMMENTS

A. OFMB Fiscal and/or Contract Dev. and Control Comments:

 1-21-09
 OFMB _{SW 1/14/9}

 1/20/09
 Contract Dev and Control
 6/20/09 1/21/09

B. Approved as to Form and Legal Sufficiency:

 1/26/09.
 Assistant County Attorney

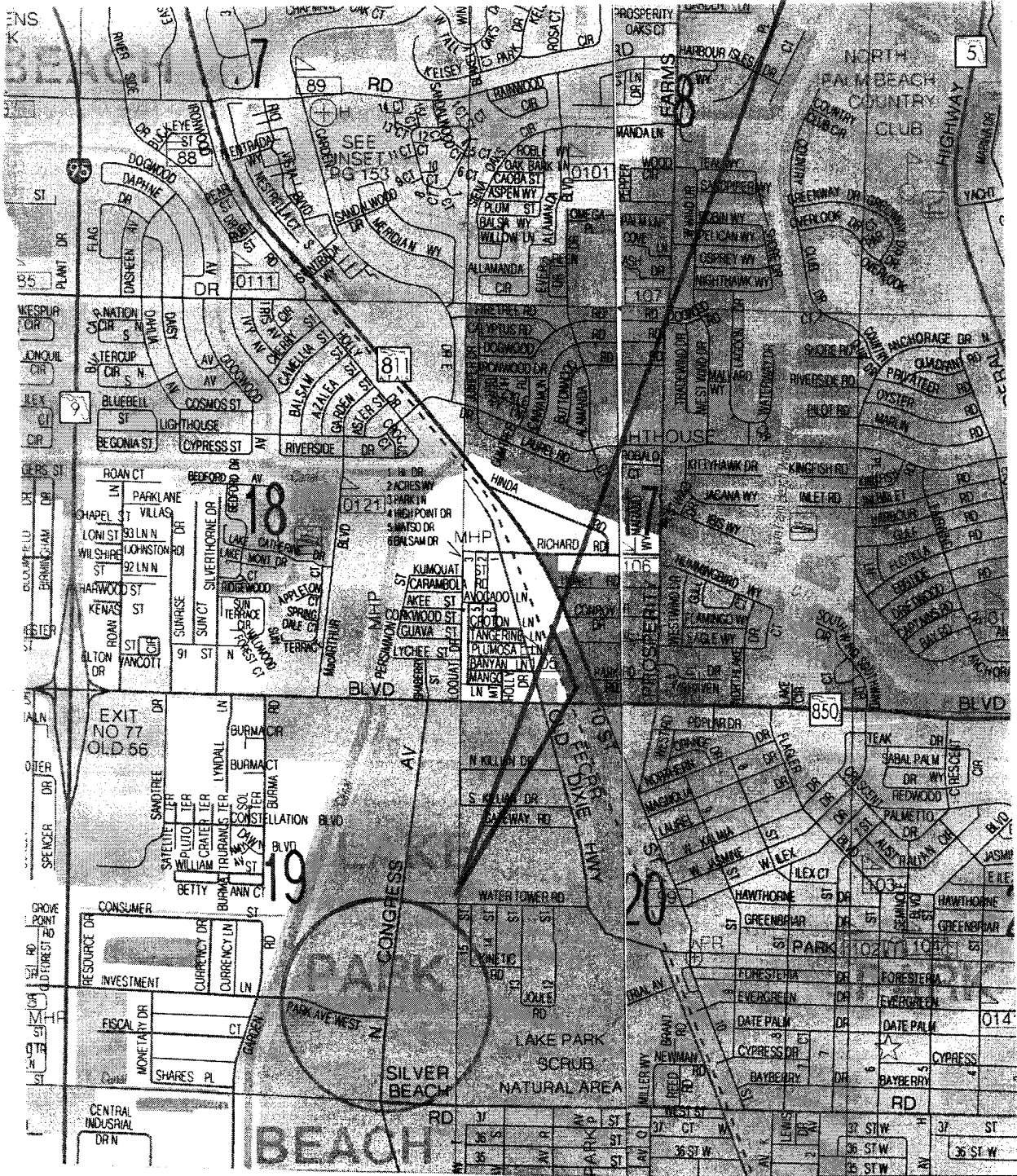
This item complies with current County policies.

C. Other Department Review:

Department Director

This summary is not to be used as a basis for payment.

**CONGRESS AVENUE AND PARK AVENUE
INTERSECTION IMPROVEMENTS
PROJECT NO. 2008602**



LOCATION MAP

ATTACHMENT 2

TASK AUTHORIZATION TO ANNUAL AGREEMENT BETWEEN

**PALM BEACH COUNTY
AND
ERDMAN ANTHONY OF FLORIDA, INC.**

FOR PROFESSIONAL ENGINEERING SERVICES ON

**CONGRESS AVENUE AND PARK AVENUE
INTERSECTION IMPROVEMENTS**

**PROJECT #: 2008602
PALM BEACH COUNTY, FLORIDA**

THIS TASK AUTHORIZATION TO THE ANNUAL AGREEMENT, made and entered into this day of _____ 2009 by and between Palm Beach County, hereinafter called the **COUNTY**, and Erdman Anthony of Florida, Inc., a Florida Corporation with an address of 1402 Royal Palm Beach Boulevard, Building 500, Royal Palm Beach, Florida 33411, hereinafter called the **CONSULTANT**.

WITNESSETH

WHEREAS, the **COUNTY** and **CONSULTANT** entered into an Annual Agreement for Intersection Improvements on a task order basis on February 5, 2008 (R2008-0164).

WHEREAS, the **COUNTY** desires the **CONSULTANT** to perform Intersection Improvement services for Congress Avenue and Park Avenue Intersection Improvements, Palm Beach County, Florida (hereinafter called the **PROJECT**); and,

WHEREAS, the **CONSULTANT** agrees to perform the Intersection Improvement services required for preparing design plans and construction bid documents, including related documents for the **PROJECT**; and,

**Re: Congress Avenue and Park Avenue Intersection Improvements
Project No.: 2008602**

WHEREAS, the following fee has been negotiated and found to be reasonable compensation for these professional services to be performed by the **CONSULTANT**:

Basic Services in a lump sum fee of \$68,235.28;

Reimbursable Expenses capped at \$26,099.10;

Optional Services Expenses capped at \$7,363.00

Totaling \$101,697.38

NOW, THEREFORE, THIS INDENTURE WITNESSETH: That for and in consideration of the mutual benefits to flow from each to the other, the parties hereto agree as follows:

1. The **CONSULTANT** agrees to provide professional services as described in Exhibit "A" of the Authorization known as "SCOPE OF WORK & FEE".
2. The **CONSULTANT** agrees to "CERTIFICATION" statements as described in Exhibit "B" of the Authorization.
3. The **CONSULTANT** agrees to Small Business Enterprise (SBE) Participation, described in Exhibit "C" of the Authorization.
4. The **CONSULTANT** has provided a sub-consultant Letters of Intent to perform as an SBE as described in Exhibit "D" of the Authorization.
5. The **COUNTY** agrees to pay the **CONSULTANT** a fee of One Hundred One Thousand Six Hundred Ninety-Seven Dollars and Thirty-Eight Cents (\$101,697.38).
6. The **CONSULTANT** agrees to indemnify, defend and hold harmless the **COUNTY** against all claims that may arise as a result of negligence, wrongdoing, misconduct or want of care by the **CONSULTANT**.

Except as hereby amended, changed or modified, all other terms and conditions of the original Agreement dated **February 5, 2008 (R2008-0164)**, and;

Supplements and Amendments thereto, shall remain in full force and effect.

Re: Congress Avenue and Park Avenue Intersection Improvements
Project No.: 2008602

IN WITNESS WHEREOF, the parties hereto have made and executed this Task Authorization as of the day and year first above written.

OWNER:

Palm Beach County, Florida, a
Political Subdivision of the
State of Florida

CONSULTANT:

Erdman Anthony of Florida, Inc.
a Florida Corporation

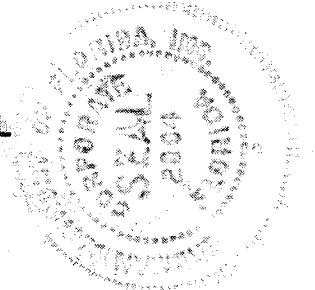
BOARD OF COUNTY COMMISSIONERS

BY: _____
John F. Koons, Chairman

BY: _____
James F. Noth, P.E., P.S.M.
Vice President

ATTEST:
Sharon R. Bock, Clerk & Comptroller
Circuit Court

CORPORATE SEAL



BY: _____
Deputy Clerk

WITNESS:

BY: _____
Kimberly A. Heath

SEAL

Kimberly A. Heath
(Printed Name)

APPROVED AS TO TERMS
AND CONDITIONS:

BY: _____
M. Rose

BY: _____
Barri Cupp

APPROVED AS TO FORM & LEGAL
SUFFICIENCY:

Barri Cupp
(Printed Name)

COUNTY ATTORNEY

EXHIBIT "A"

OK
M.A.
Scope & Fee OK.
JJA
12-16-08

SCOPE OF SERVICES
North Congress Avenue and Park Avenue
Intersection Improvements
PBC Project No. 2008602

December 10, 2008



Prepared By:
ERDMAN ANTHONY
1402 Royal Palm Beach Blvd., Bldg. 500
Royal Palm Beach, FL 33411

Engineer's Project
No. 60133

North Congress Avenue at Park Avenue Intersection Improvements

EXHIBIT "A"
SCOPE OF SERVICES

A. General

Erdman Anthony proposes to provide professional services required in connection with the proposed intersection improvements at N. Congress Ave and Park Ave in Palm Beach County, Florida. Improvements will include:

- East bound lane widening to create a dual left, 1 thru, and 1 right. The left turn lane into the Wal-Mart entrance will be maintained. Northbound Congress will be widened (if necessary) to accept the dual lefts.
- Signal Plans will only include facilities on the southwest corner of the intersection. Modifications to other corners or new signals on other corners of the intersection are to be prepared by the developer and are not included in this proposal.

Plans will be prepared in accordance with the latest standards of Palm Beach County as described in the Thoroughfare Roadway Design Procedures dated February 2006 as amended for this assignment, and the Florida Department of Transportation Plans Preparation Manual and FDOT Manual of Uniform Minimum Standards for Design, Construction and Maintenance for Streets and Highways, 2007 (Florida Greenbook.) All plans will be on 11"x17" paper.

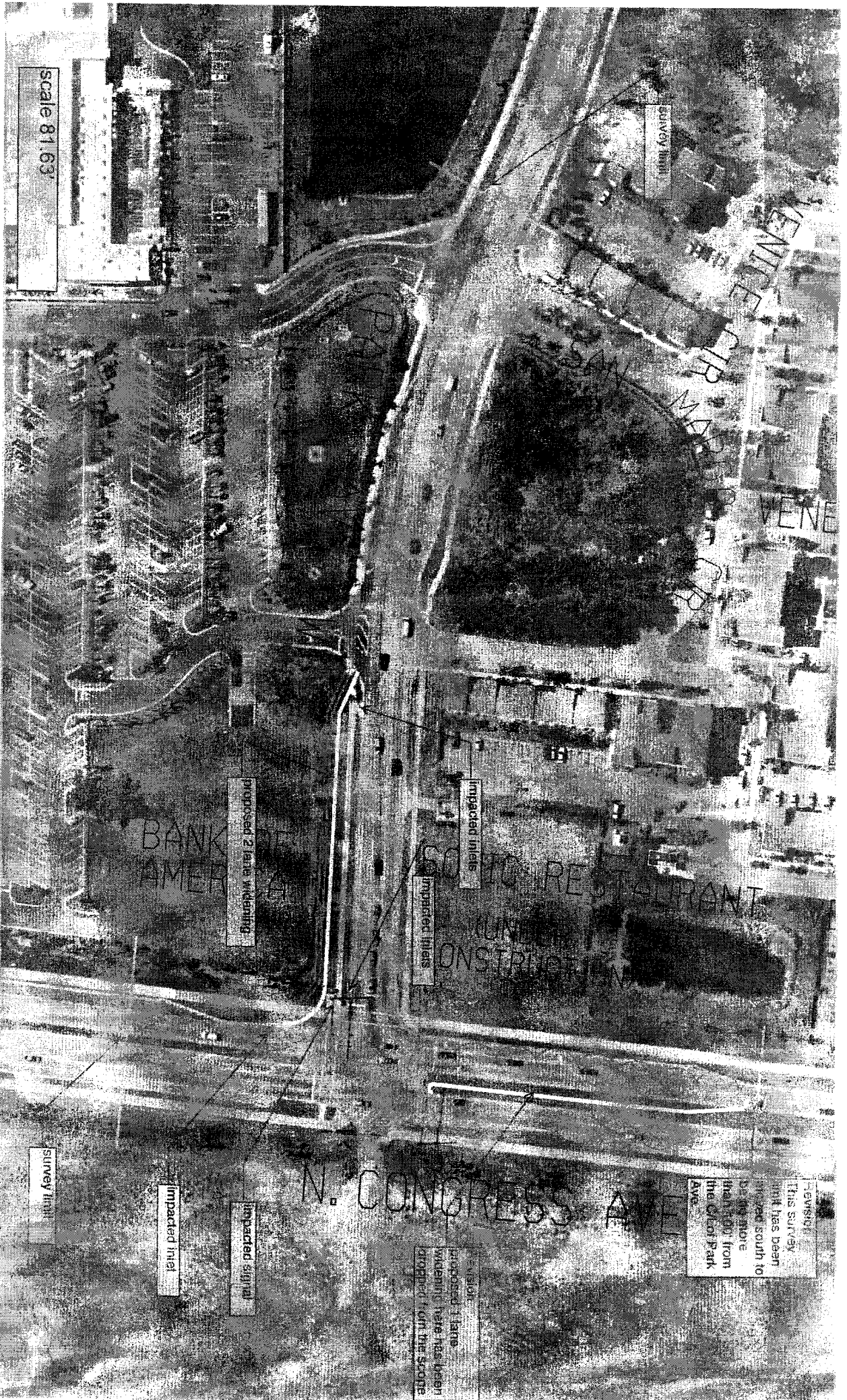
Erdman Anthony will provide the following basic and optional services using sub-consultants for the reimbursable services, subject to approval by Palm Beach County:

A. Basic Services

1. 35% Submittal ✓
2. 65% Submittal
3. 96% Submittal
4. 100% Submittal
5. Final Submittal
6. Field Survey
7. Geotechnical Services
8. Meetings

B. Optional Services

1. Subsurface Utility Exploration (SUE) Services ✓
2. Legal Descriptions and Sketches



Scale 81:63

Survey inlet

Proposed 2 lane widening

Impacted inlet

Impacted inlet

Survey inlet

Impacted inlet

Impacted signal

Proposed 3 lane widening here has been proposed 1 on the scope

THIS SURVEY
HAS BEEN
MADE SOUTH TO
DEAN ST
FROM
THE CLEAR PARK
AVE

N. CONGRESS AVE

BANK OF AMERICA

RESTAURANT

CONSTRUCTION

VENETIAN BLVD

VENETIAN BLVD

B. Basic Services

1. 35% Submittal

These services refer to the following packages:

- Initial Utility Contact Plans
- Typical section package / Master plan
- 35% Design Plans Submittal

Initial Utility Contact Plans - includes the preparation of plan and profile sheets showing the survey base line stations, intersecting side street names, existing profile and above ground utilities. These plans will be developed at a scale of 1"=40' on the aerial photographs for submittal to the utility companies that have facilities along the project corridor.

Typical section package / Master plan, is the preparation of the typical section and a red-lined master plan on the 1"=40' aerials showing all proposed turn lanes and major intersection geometrics. This plan will identify proposed developments that are in the site planning process with Palm Beach County. Roadway transitions from the existing 3 lane typical section on Park Ave to the proposed five lane typical section will be designed as part of this phase. In order to expedite the design process, typical section and master plan will be submitted at the same time.

The 35% Design Plans submittal will include:

1. Title Sheet
2. Approved Typical Section
3. Preliminary Drainage Map
4. Preliminary Geometrics
5. Benchmarks, References and Sectional Corners
6. Right of Way Lines, baseline of Survey and Centerline of Construction
7. Preliminary Drainage Design
8. Preliminary Profile Grade Lines
9. Existing Drainage
10. Existing Intersection Profiles
11. Existing Cross Sections
12. List of Required Permits

2. 65% Submittal

These services refer to the following packages:

- Utility Pothole Coordination Plans

- First Utility Coordination Meeting
- Pothole Underground Utilities at Possible Conflict Points (Optional Service)
- 65% Design Plans Submittal
- Permit Packages

The utility coordination will precede/accompany the 65% submittal. These tasks shall be done in accordance with the Appendix A of the Palm Beach County Thoroughfare Road Design Procedures. PBC utility department or, Prism surveying, Inc. and its subconsultant InfraMap, if authorized by PBC, will designate and survey the utility lines within the corridor, as well as any utility potholes exposed by the utility provider.

The 65% Design Plans submittal will include:

1. Review comments for the 35% submittal addressed
2. Summary of Quantities (items only)
3. Drainage Design Computations
4. Proposed Drainage in Plan
5. Final Geometrics
6. Geometric Computation Book
7. Final Profiles
8. Limits of Construction
9. Intersection Profile Sheets
10. Proposed Cross Sections
11. Existing Utilities
12. Driveway Profile Sheets (existing and proposed)
13. Special Detail Sheets
14. Bridge Construction Plans
15. Preliminary Signing and Pavement Marking Plans
16. Preliminary Signal Plans

Permit packages - includes the application for all permits. RJ Behar & Company, Inc. will prepare permit packages to incorporate the proposed lane widening. A drainage report will be prepared and processed through the South Florida Water Management District and NPBD as appropriate for storm water outfall approvals and through the South Florida Water Management District. No NPDES permitting is included.

3. 96% Submittal

These services refer to the following packages:

- Utility Conflict Resolution Plans and Meetings

– 96% Design Plans Submittal

Utility Conflict Resolution Plans and Meetings is the utility coordination prior to the 96% submittal. These tasks shall be done in accordance with the Appendix A of the Palm Beach County Thoroughfare Road Design Procedures.

The 96% Design Plans submittal will include:

1. Review comments for the 65% submittal addressed
2. Special Provisions for Construction Specifications
3. Summary of Quantities Sheet
4. Utilities on Plan and Profile
5. Drainage on Drainage Map and Plan and Profile Sheets, including drainage structures
6. Signing and Pavement Marking Plans
7. Signal Plans
8. Special Detail Sheets
9. Cross Sections
10. Quantity Computation Book
11. Engineer's Cost Estimate

4. 100% Submittal

These services refer to the following packages:

- Final Utility Coordination Meeting
- 100% Design Plans Submittal

Utility coordination – involves coordination prior to the 100% submittal. These tasks shall be done in accordance with the Appendix A of the Palm Beach County Thoroughfare Road Design Procedures.

The 100% Design Plans submittal will include:

1. Review comments for the 96% submittal addressed
2. All Permits Received

5. Final Submittal

This submittal shall be done in accordance with the Palm Beach County Thoroughfare Road Design Procedures.

6. Field Survey

A Control Survey will be performed to establish the primary sectional and right-of-way control throughout the project limits. The survey control will

be tied to the Florida State Plane Coordinate System using the County's most recent published adjustment. A baseline will be set with points at 100-foot intervals along the project alignment to the North and West of the intersection to provide control for the proposed roadway improvements.

A vertical control survey will be performed within the project limits to establish bench marks at a maximum of 1000-foot intervals as required by Palm Beach County. All elevations shall be referenced to NAVD 1988.

A Design Survey will be performed with topography located to 25 feet outside of the proposed back of sidewalk lines. This will include all above ground utility locations. Survey limits will include the entire intersection and 880' along Park Ave, 200' on N. Congress Ave, north of the intersection and 260' on N. Congress Ave, south of the intersection, all measured from the center of the intersection.

A 3D Microstation file and DTM will be provided.

7. Geotechnical Exploration

Tierra Inc will provide geotechnical exploration per their proposal.

8. Meetings

A representative from Erdman Anthony and subconsultants as specified will attend the following meetings as listed in the attached fee proposal.

C. Optional Services

1. Subsurface Utility Exploration (SUE) Services – It is understood that Palm Beach County utility Department will coordinate and execute all SUE work. However, as desired by PBC, an estimate for SUE services has been included here as Optional Services
2. Legal Descriptions and Sketches – No Right of Way acquisition is anticipated for the project. However, as desired by PBC, a rate for this service has been provided

D. Reimbursable Services

1. Printing:
The costs for such printing will be billed to the County as shown on the fee proposal. CADD files will be submitted with the final submittal.

ESTIMATE OF WORK EFFORT AND COST - PRIME CONSULTANT

Name of Project:
County:
FPN:
FAP No.:

Congress and Park Ave
Palm Beach

Consultant Name: Erdman Anthony
Consultant No.:
Date: 12/18/2008
Estimator: Nisar Khan

Staff Classification	Senior Engineer	Project Manager	Project Engineer	Designer	Engineering Intern	CADD Technician	2 Man Crew	1 Man Crew	PLS	SH By Activity	Salary Cost By Activity	Average Rate Per Task
	\$180.00	\$145.00	\$130.00	\$90.00	\$75.00	\$75.00	\$120.00	\$65.00	\$130.00			
3. General Task	15	15	10	0	0	0	0	0	0	40	\$5,875	\$146.88
4. Roadway Analysis	17	22	21	13	9	4	0	0	0	86	\$10,785	\$125.41
5. Roadway Plans	12	18	32	24	12	24	0	0	0	122	\$13,550	\$111.07
6. Drainage Analysis	2	2	4	2	1	1	0	0	0	12	\$1,480	\$121.67
7. Utility	2	3	2	4	3	2	0	0	0	16	\$1,750	\$109.38
8. Environmental Permits	3	3	4	5	3	2	0	0	0	20	\$2,260	\$113.00
19. Signing & Marking Analysis	4	6	6	5	3	5	0	0	0	29	\$3,340	\$115.17
20. Signing & Marking Plans	4	6	7	8	5	7	0	0	0	36	\$3,895	\$108.19
21. Signalization Analysis	5	7	7	5	3	5	0	0	0	32	\$3,775	\$117.97
22. Signalization Plans	3	4	7	6	5	5	0	0	0	30	\$3,260	\$108.67
23. Lighting Analysis												
24. Lighting Plans												
25. Landscape Architecture Analysis												
26. Landscape Architecture Plans												
Total Staff Hours	67	85	100	72	44	55	0	0	0	429		
Total Staff Cost	\$10,720.00	\$12,325.00	\$13,000.00	\$6,480.00	\$3,300.00	\$4,125.00	\$0.00	\$0.00	\$0.00		\$49,950.00	\$118.09

BASIC SERVICES

Erdman Anthony \$49,950.00
 R. J. Behar ✓ \$18,285.28
Total Basic Services ✓ \$68,235.28

Reimbursables

60% Erdman Anthony ✓ \$136.10
 22% Prism Surveying ✓ \$10,629.00
 13% Tierra ✓ \$4,210.00
 5% R. J. Behar ✓ \$11,125.00
Total Reimbursables ✓ \$26,099.10

Optional Services

Prism Surveying ✓
 Subsurface Utility Exploration ✓ \$6,863.00
 Legal Descriptions & Sketches (per sketch) ✓ \$500.00
Total Optional Services ✓ \$7,363.00

GRAND TOTAL ✓ **\$101,697.38**

** 3.0% multiplier*

3. Project General Task

Firm: Erdman Anthony
Estimator: Nisar Khan

Task No.	Task	Units	No of Units	Hours / Unit	Total Hours	Comments
3.7	Post Design Services	LS	1	20	20	Post design Services up to the hourly limit
3.8	Other Project General Tasks	LS	1	20	20	1.5 hr/month for 13 months for general project coordination, phone calls & e-mails with PBC
3. General Tasks Total					40	

4. Roadway Analysis

Estimator:
Form Revised 6/6/05

Firm: Erdman Anthony
Estimator: Nisar Khan

Task No.	Task	Units	No of Units	Hours / Unit	Total Hours	Comments
4.4	Horizontal /Vertical Master Design Files	LS	1	32	32	1/8 mile total length
4.5	Cross Section Design Files	LS	1	24	24	100' sections
4.10	Computation Book & Quantities	LS	1	10	10	Low end for non LS projects
4.11	Cost Estimate	LS	1	6	6	
4.12	Technical Special Provisions	LS	1	0	0	
4.13	Other Roadway Analysis	LS	1	0	0	
Roadway Analysis Technical Subtotal					72	
4.14	Field Reviews	LS	2	4	8	
4.15	Technical Meetings	LS	1	6	6	2 review meetings with PBC
Roadway Analysis Nontechnical Subtotal					14	
4. Roadway Analysis Total					86	

5. Roadway Plans

Estimator:

Firm: Erdman Anthony
Estimator: Nisar Khan

Task No.	Task	Scale	Units	No. of Units	Hours / Unit	No. of Sheets	Total Hours	Comments
5.1	Key Sheet		Sheet	1	4	1	4	
5.2	Summary of Pay Items-including Quantity Input		Sheet	1	8	1	8	
5.3	Drainage Map		Sheet	1	0	1	0	
5.4	Interchange Drainage Map		Sheet	0	0	0	0	
5.5	Typical Section Sheets		Sheet	1	12	1	12	2 typical sections, 1 sheet
5.6	General Notes/Pay Item notes		Sheet	1	8	1	8	
5.7	Summary of Quantities		Sheet	1	12	1	12	
5.14	Profile Sheet		Sheet	2	10	2	20	
5.15	Plan Sheet		Sheet	2	24	2	48	Includes drianage structure details
5.20	Intersection Layout Details		Sheet	1	0	1	0	
5.21	Miscellaneous Detail Sheets		Sheet	0	0	0	0	
5.24	Lateral Ditch Plan/Profile		Sheet	0	0	0	0	
5.25	Lateral Ditch Cross Sections		EA	0	0		0	
5.28	Cross-section Pattern Sheet		Sheet	0	0	0	0	
5.30	Cross Sections		EA	5	2		10	100' sections, +/- 5 on Park
5.34	Utility Adjustment Sheets		Sheet	0	4	0	0	
5.35	Selective Clearing and Grubbing		Sheet	0	0	0	0	
5.37	SWPPP		Sheet	0	4	0	0	
5.40	Utility Verification Sheet (SUE Data)		Sheet	0	0	0	0	
Roadway Plans Technical Subtotal						12	122	
5. Roadway Plans Total						12	122	

6. Drainage Analysis

Estimator:
Form Revised 4/15/07

Firm: Erdman Anthony
Estimator: Nisar Khan

Task No.	Task	Units	No of Units	Hours / Unit	Total Hours	Comments
6.1	Determine Base Clearance Water Elevation	Per Location	0	8	0	
6.2	Pond Siting Analysis and Report	Per Basin	0	0	0	
6.3	Design of Cross Drains	EA	0	0	0	
6.4	Design of Roadway Ditches	Per Ditch Mile	0	0	0	
6.5	Design of Outfalls	EA	0	0	0	
6.6	Design of Stormwater Management Facility (Offsite Pond)	EA	0	0	0	
6.7	Design of Stormwater Management Facility (Roadside Ditch as Linear Pond or Infield Pond)	Per System	0	0	0	
6.8	Design of Flood Plain Compensation Area	Per Encroachment	0	0	0	
6.10	Optional Culvert Material	LS	0	6	0	
6.12	Drainage Wells	EA	0	0	0	
6.14	Bridge Hydraulic Report	EA	0	0	0	
6.15	Temporary Drainage Analysis	LS	1	0	0	
6.16	Cost Estimate	LS	0	8	0	
6.17	Technical Special Provisions	LS	1	0	0	
6.18	Other Drainage Analysis	LS	1	0	0	
Drainage Analysis Technical Subtotal					0	
6.19	Field Reviews	LS	1	6	6	
6.20	Technical Meetings	LS	1	6	6	1 person, 2 meetings
Drainage Analysis Nontechnical Subtotal					12	
6. Drainage Analysis Total					12	

7. Utilities

Estimator:

Firm: Erdman Anthony

Form Revised 4/15/07

Estimator: Nisar Khan

Task No.	TASK	Units	No of Units	Hours / Unit	Total Hours	Comments
7.1	Kickoff Meeting	LS	1	0	0	
7.4	Exception Coordination	LS	1	0	0	
7.5	Preliminary Utility Meeting	LS	1	0	0	
7.6	Individual/Field Meetings	LS	1	0	0	
7.9	Utility Design Meeting	LS	3	2	6	Erdman Anthony
7.10	Review Utility Markups, Work Schedules, Processing of Schedules and Agreements	LS	1	0	0	
7.11	Utility Coordination / Followup	LS	1	6	6	Provide assistance to PBC utility office to the budgeted hrs limit
7.13	Additional Utility Services	LS	1	0	0	
7.15	Contract Plans to UAO(s)	LS	0	8	0	PBC Utility Department to provide plans to UAO
7.17	Other Utilities	LS	1	0	0	
7. Utilities Total					16	

8. Environmental Permits

Estimator:
Form Revised 6/6/05

Firm: Erdman Anthony
Estimator: Nisar Khan

Task No.	Task	Units	No. of Units	Hours/ Units	Total Hours	Comments
8.2	Complete Permit Involvement Form	LS	1	0	0	
8.3	Establish Wetland Jurisdictional Lines	LS	1	0	0	
8.4	Agency Verification of Wetland Data	LS	1	0	0	
8.8	ERM Permit	LS	1	0	0	
8.9	Prepare R/W Occupancy Sketches	LS	1	0	0	
8.10	Prepare Coastal Construction Control Line (CCCL) Permit Sketches	LS	1	0	0	
8.11	Prepare Tree Permit Information	LS	1	0	0	
8.12	Mitigation Coordination and Meetings	LS	1	0	0	
8.13	Mitigation Design	LS	1	0	0	
8.14	Environmental Clearances	LS	1	0	0	
8.15	Other Environmental	LS	1	16	16	Assistance to and review of Permit Applications and Reports prepared by R J Behar
Environmental Permits Technical Subtotal					16	
8.16	Technical Meetings	LS	1	4	4	SFWMD & Northern District Meeting (1 person 2 meetings)
Environmental Permits Nontechnical SubTotal					4	
8. Environmental Permits Total					20	

19. Signing & Marking Analysis

Estimator:
Form Revised 6/6/05

Firm: Erdman Anthony
Estimator: Nisar Khan

Task No.	Task	Units	No. of Units	Hours/ Units	Total Hours	Comments
19.1	Traffic Data Analysis	LS	1	0	0	
19.2	No Passing Zone Study	LS	1	0	0	
19.3	Reference and Master Design File	LS	1	24	24	Per PBC mark ups
19.4	Multi Post Sign Support Calculations	EA	0	0	0	
19.5	Sign Panel Design Analysis	EA	0	2	0	
19.6	Sign Lighting/Electrical Calculations	EA	0	0	0	
19.7	Quantities	LS	1	5	5	Assume 2 plan sheets
19.8	Computation Book	LS	1	0	0	
19.9	Cost Estimate	LS	0	8	0	
19.10	Technical Special Provisions	LS	1	0	0	
19.11	Other Signing and Pavement Marking	LS	1	0	0	
Signing & Pavement Marking Analysis Technical Subtotal					29	
19.13	Technical Meetings	LS	1	0	0	
Signing & Pavement Marking Analysis Nontechnical Subtotal					0	
19. Signing & Pavement Marking Analysis Total					29	

20. Signing & Marking Plans

Estimator:

Firm: Erdman Anthony
Estimator: Nisar Khan

Task No.	Task	Scale	Units	No of Units	Hours/ Unit	No. of Sheets	Total Hours	Comments
20.1	Key Sheet		Sheet	0	4	0	0	
20.2	Summary of Pay Items-including CES Input		LS	1	0		0	
20.3	Tabulation of Quantities		Sheet	1	6	1	6	
20.4	General Notes / Pay Item Notes		Sheet	1	6	1	6	
20.5	Project Layout		Sheet	0	0	0	0	
20.6	Plan Sheet		Sheet	2	12	2	24	
20.7	Typical Details		EA	0	0		0	
20.8	Guide Sign Work Sheet (s)		EA	0	2		0	
20.9	Traffic Monitoring Site		EA	0	0		0	
20.10	Cross Sections		EA	0	0		0	
20.11	Special Service Point Detail		EA	0	0		0	
20.12	Special Details		LS	1	0		0	
20.13	Interim Standards		LS	1	0		0	
Signing & Pavement Marking Plans Technical Subtotal						4	36	
20. Signing & Pavement Marking Plans Total						4	36	

21. Signalization Analysis

Estimator:
Form Revised 4/15/07

Firm: Erdman Anthony
Estimator: Nisar Khan

Task No.	Task	Units	No. of Units	Hours/ Units	Total Hours	Comments
21.1	Traffic Data Collection	LS	0	0	0	NA
21.2	Traffic Data Analysis	PI	0	0	0	Traffic data analysis and existing signal plans to be provided by PBC
21.3	Signal Warrant Study	LS	0	0	0	
21.4	System Timings	LS	0	0	0	
21.5	Reference and Master Signalization Design File	PI	1	16	16	
21.6	Reference and Master Interconnect Communication Design File	LS	0	0	0	
21.7	Overhead Street Name Sign Design	EA	1	2	2	
21.8	Pole Elevation Analysis	LS	1	2	2	
21.9	Traffic Signal Operation Report	LS	1	0	0	
21.10	Quantities	LS	1	4	4	Does not include preparing computation book
21.11	Cost Estimate	LS	1	4	4	One cost estimate
21.12	Technical Special Provisions	LS	1	0	0	NA
21.13	Other Signalization	LS	1	0	0	
Signalization Analysis Technical Subtotal					28	
21.14	Field Reviews	LS	1	4	4	1 review , 1 person
21.15	Technical Meetings	LS	0	0	0	
21.16	Quality Assurance/Quality Control	LS	%	0%	0	
21.17	Independent Peer Review	LS	%	0%	0	
21.18	Supervision	LS	%	0%	0	
Signalization Analysis Nontechnical Subtotal					4	
21.19	Coordination	LS	%	0%	0	
19. Signalization Analysis Total					32	

22. Signalization Plans

Estimator:

Firm: Erdman Anthony
Estimator: Nisar Khan

Task No.	Task	Scale	Units	No of Units	Hours/ Unit	No. of Sheets	Total Hours	Comments
22.1	Key Sheet		Sheet	1	2	1	2	Per PBC markups
22.2	Summary of Pay Items-including CES Input		Sheet	0	0	0	0	NA
22.3	Tabulation of Quantities		Sheet	1	4	1	4	
22.4	General Notes/Pay Item notes		Sheet	1	4	1	4	
22.5	Plan Sheet		Sheet	2	8	2	16	Per PBC markups
22.6	Interconnect Plans		Sheet	0	0	0	0	NA
22.7	Traffic Monitoring Site		EA	0	0		0	
22.8	Guide Sign Work Sheet		EA	0	2		0	Show street name sign on the plan. No other details reqd.
22.9	Special Details		Sheet	0	0	0	0	
22.10	Special Service Point Details		EA	0	0		0	
22.11	Mast Arm / Monotube Tabulation Sheet		PI	1	4		4	
22.12	Strain Pole Schedule		PI	0	0		0	
22.13	TCP Signal (Temporary)		EA	0	0		0	
22.14	Temporary Detection Sheet		PI	0	0		0	
22.15	Utility Conflict Sheet		Sheet	0	6	0	0	Show on the plan. No separate sheet reqd.
22.16	Interim Standards		LS	1	0		0	
Signalization Plans Technical Subtotal						5	30	
22. Signalization Plans Total						5	30	

**PARK AVENUE AND CONGRESS AVENUE
INTERSECTION IMPROVEMENTS**

FOR
PALM BEACH COUNTY

Prepared By:

Prism Surveying, Inc.

SURVEY				
BASIC SERVICES				
	Days	Hours	Rate\$	Cost
Field Crew		9	800	\ \$7,200.00
CAD		46	60	\ \$2,760.00
Research				
a - For designates		4	60	\ \$240.00
Surveyor Review				
a -Field review		2	71.5	\ \$143.00
b - Technical meetings		4	71.5	\ \$286.00
BASIC SERVICES SUBTOTAL				\ \$10,629.00

OPTIONAL SERVICES

1 -	SUB SURFACE UTILITY EXPLORATION (SUE)				
	Days	Hours	Rate\$	Cost	
	By Prism				
		3	\$800.00	\ \$2,400.00	
		8	\$60.00	\ \$480.00	
		14	\$60.00	\ \$840.00	
		2	\$71.50	\ \$143.00	
			SUBTOTAL	\ \$3,863.00	
	By Others				
	Research	(see proposal)	4	125	\ \$500.00
	Field Support	(see proposal)	20	125	\ \$2,500.00
			SUBTOTAL	\ \$3,000.00	
			SUE SUBTOTAL	\ \$6,863.00	
2 -	LEGAL SKETCHES & DESCRIPTIONS		Rate per Sketch	Cost	
	Legal Sketches & Descriptions		\$500.00	\ \$500.00	
	TOTAL			\ \$17,992.00	

Project Activity 27: Survey

Estimator:
 Project: Congress Ave & Park Ave Intersection Improvements
 Date: 12/4/2008 #REF!
 #REF!

Task No.	Task	Units	Mile	Field Cross Section/Day	Crew Days	Field Support Hours / Crew Days	Field Support Hours	Office Support Hours / Crew Days	Office Support Hours	Comments	
27.01	Horizontal Project Network Control (HPNC)										
	2-Lane Roadway	Mile	0.00	0.00	0.00	0.00	0.00	0.00	0.00		
	Multi-lane Roadway	Mile	1.00	0.75	0.75	0.00	0.00	0.00	0.00		
	Interstate	Mile	0.00	0.00	0.00	0.00	0.00	0.00	0.00		
27.02	Vertical Project Network Control (VPNC)										
	2-Lane Roadway	Mile	0.00	0.00	0.00	0.00	0.00	0.00	0.00		
	Multi-lane Roadway	Mile	1.00	0.75	0.75	0.00	0.00	0.00	0.00		
	Interstate	Mile	0.00	0.00	0.00	0.00	0.00	0.00	0.00		
27.03	Alignment and Existing RW Lines										
		Mile	1.00	0.50	0.50	0.00	0.00	0.00	0.00		
27.04	Aerial Targets										
	2-Lane Roadway	EA	0.00	0.00	0.00	0.00	0.00	0.00	0.00		
	Multi-lane Roadway	EA	0.00	0.00	0.00	0.00	0.00	0.00	0.00		
	Interstate	EA	0.00	0.00	0.00	0.00	0.00	0.00	0.00		
27.05	Reference Points										
	2-Lane Roadway	EA	0.00	0.00	0.00	0.00	0.00	0.00	0.00		
	Multi-lane Roadway	EA	1.00	1.50	1.50	0.00	0.00	0.00	0.00		
	Interstate	EA	0.00	0.00	0.00	0.00	0.00	0.00	0.00		
27.06	Digital Terrain Model DTM/3D										
		Mile	1.00	2.00	2.00	0.00	0.00	0.00	0.00		
27.07	Topography (2D)										
		Mile	1.00	2.00	2.00	0.00	0.00	0.00	0.00		
27.08	Roadway Cross-Sections/Profiles										
		Mile	1.00	0.50	0.50	0.00	0.00	0.00	0.00		
27.09	Side Street Surveys										
		Mile	1.00	0.50	0.50	0.00	0.00	0.00	0.00		
27.10	Underground Utilities										
			OPTIONAL SERVICES								
	Designates - OTHERS	Mile/Sheet	0.00	0.00	0.00	20.00	20.00	4.00	4.00	OPTIONAL SERVICES	
	Locates - Prism Field	Point	1.00	3.00	3.00	0.00	0.00	1.00	3.00		
	Survey - Prism Office	LS	1.00	0.00	0.00	0.00	0.00	10.00	10.00		
27.11	Outfall Survey										
		Mile	0.00	0.00	0.00	0.00	0.00	0.00	0.00		
27.12	Drainage Survey									Surface Drainage	
		EA	1.00	0.50	0.50	0.00	0.00	0.00	0.00		
27.13	Bridge Survey										
	Minor / Major	EA	0.00	0.00	0.00	0.00	0.00	0.00	0.00		
27.14	Channel Survey										
		EA	0.00	0.00	0.00	0.00	0.00	0.00	0.00		
27.15	Pond Site Survey										
		EA	0.00	0.00	0.00	0.00	0.00	0.00	0.00		
27.16	Mitigation Survey										
		Mile	0.00	0.00	0.00	0.00	0.00	0.00	0.00		
27.17	Jurisdiction Line Survey										
		Mile	0.00	0.00	0.00	0.00	0.00	0.00	0.00		
27.18	Geotechnical Support										
		EA	0.00	0.00	0.00	0.00	0.00	0.00	0.00		

Project Activity 27: Survey

Estimator	Project									#REF!
Revised	12/4/2008	Congress Ave & Park Ave Intersection Improvements								#REF!
Task No.	Task	Units	No of Units	Field Crew Days/Unit	Crew Days	Field Support Hours / Crew Days	Field Support Hours	Office Support Hours / Crew Days	Office Support Hours	Comments
27.19	Sectional / Grant Survey									
		Corner	0.00	0.00	0.00	0.00	0.00	0.00	0.00	
		Mile	0.00	0.00	0.00	0.00	0.00	0.00	0.00	
27.20	Subdivision Location									
		Block	0.00	0.00	0.00	0.00	0.00	0.00	0.00	
27.21	Maintained RAW									
		Mile	0.00	0.00	0.00	0.00	0.00	0.00	0.00	
27.22	Boundary Survey									
		EA	0.00	0.00	0.00	0.00	0.00	0.00	0.00	
27.23	Water Boundary Survey									
		EA	0.00	0.00	0.00	0.00	0.00	0.00	0.00	
27.24	R/W Staking									
	Parcel / R/W Line	EA/Mile	0.00	0.00	0.00	0.00	0.00	0.00	0.00	
27.25	R/W Monumentation									
		Point	0.00	0.00	0.00	0.00	0.00	0.00	0.00	
27.26	Line Cutting									
		Mile	0.00	0.00	0.00					
27.27	Work Zone Safety									
		LS		0.50	0.01					
27.28	Miscellaneous Surveys									
		LA	0.00	0.00	0.00	0.00	0.00	0.00	0.00	
Survey Subtotal				Crew Days	12.0	Field Support Hours	20	Office Support Hours	17	OPTIONAL SERVICES - OFFICE SUPPORT HOURS 18, FIELD SUPPORT HOURS 26, CREW DAYS 3
27.29	Supplemental Surveys									THE % FOR SUPPLEMENTAL WILL BE DETERMINED AT NEGOTIATIONS. THIS ITEM CAN ONLY BE USED IF AUTHORIZED IN WRITING BY THE DISTRICT SURVEYOR
		LA	0.00	0.00	0	0.00	0	0.00	0	
27.30	Document Research									Office Research
		LA	4.00						4	
27.31	Field Reviews									Survey Review
		LS	2.00						2	
27.32	Technical Meetings									Survey Review
		LS	4.00						4	
27.33	Quality Assurance / Quality Control									
		LS						5%	0	
27.34	Supervision									Survey Review
		LS						5%	0	
27.35	Coordination									
		LS						3%	0	
27. Survey Total				Crew Days	12.0	Field Support Hours	20	Office Support Hours	37	

SPLS =
 PLS =
 Office Support =
 Total Hours =

Technical Meetings

Kickoff meeting with FDOT	EA	0	0	0
Baseline approval review	EA	0	0	0
Network Control review	EA	0	0	1
Vertical Control review	EA	0	0	1
Local Governments (cities, counties)	EA	0	0	0
Final submittal review	EA	0	0	2
Other meetings	EA	0	0	0
Subtotal technical meetings				4
Progress Meetings	EA	0	0	0
Phase Review Meetings	EA	0	0	0
Total Meetings				4

Carries to 27.32

PM Attendance at Meeting Required?

Yes / No	Number
no	0
no	0
no	0
no	0
no	0
no	0
no	0
no	0

Project manager meetings = 0 Carries to Task 3, Project General

Note: Project Manager attendance at progress, phase and field review meetings are manually entered on General Task 3

Project Activity 29: Mapping

SURVEYOR MAPPING ONLY - NO FIELD

#REF!

Form Revised 12/04/08

#REF!

Task No.	Task	Units	No. of Units	Hours/ Unit	No. of Sheets	Total Hours	Comments
Master CADD File							
29.1	Alignment	Mile	1	8		6	
29.2	Section and 1/4 Section Lines	Section	0	0		0	
29.3	Subdivisions	EA	0	0		0	
29.4	Existing R/W	Mile	1	8		8	
29.5	Topography	Mile	1	28		26	
29.6	Parent Tract Properties/Existing Easements	Parcel	1	8		6	
OPTIONAL SERVICES							
29.7	UNDERGROUND LOCATES	Parcel	1	8		8	UNDERGROUND LOCATES
29.8	Limits of Construction	Mile	0	0		0	
29.9	Jurisdictional/Agency Lines	Linear Mile	0	0		0	
Sheet Files							
29.10	Control Survey Cover Sheet	Sheet	0	0	0	0	
29.11	Control Survey Key Sheet	Sheet	0	0	0	0	
29.12	Control Survey Detail Sheet	Sheet	0	0	0	0	
29.13	R/W Map Cover Sheet	Sheet	0	0	0	0	
29.14	R/W Map Key Sheet	Sheet	0	0	0	0	
29.15	R/W Map Detail Sheet	Sheet	0	0	0	0	
29.16	Maintenance Map Cover Sheet	Sheet	0	0	0	0	
29.17	Maintenance Map Key Sheet	Sheet	0	0	0	0	
29.18	Maintenance Map Detail Sheet	Sheet	0	0	0	0	
29.19	Reference Point Sheet	Sheet	0	0	0	0	
29.20	Project Network Control Sheet	Sheet	0	0	0	0	

Project Activity 29: Mapping

Task No.	Task	Units	No. of Units	Hours/ Unit	No. of Sheets	Total Hours	Comments
29.21	Table of Ownerships Sheet	Sheet	0	0	0	0	
Miscellaneous - Optional Service							
29.22	Parcel Sketches	Parcel	Rate per sketch - \$500.00				
29.23	TIITF Sketches	Parcel	0	0		0	
29.24	Other Specific Purpose Survey Map	EA	0	0		0	
29.25	Boundary Survey(s) Map	EA	0	0		0	
29.26	R/W Monumentation Map	Mile	0	0		0	
29.27	Title Search Map	LS	1	0		0	
29.28	Title Search Report	LS	1	0		0	
29.29	Legal Descriptions	Parcel		0		0	
29.30	Final Maps/Plans Comparison	Sheet		0	0	0	
Mapping Technical Subtotal					0	54	
29.31	Field Reviews	LS	1	0		0	
29.32	Technical Meetings	LS	1	0		0	Meetings are listed below
29.33	Quality Assurance/Quality Control	EA	%	0%		0	
29.34	Supervision	EA	%	0%		0	
Mapping Nontechnical Subtotal						0	
29.35	Coordination	LS	%	0%		0	
29.36	Supplemental Mapping	LS	%	0%		0	
29. Mapping Total					0	54	

Technical Meetings

PM Attendance at Meeting Required?

					Yes / No
Kickoff meeting	EA	0	0	0	no
Control map review	EA	0	0	0	no
45/60/90/final map review	EA	0	0	0	no

Project Activity 29: Mapping

Task No.	Task	Units	No. of Units	Hours/ Unit	No. of Sheets	Total Hours	Comments
	Other meetings	EA	0	0	0		no
	Subtotal technical meetings				0		
	Progress Meetings	EA	0	0	0		
	Phase Review Meetings	EA	0	0	0		
	Total Meetings				0		

Carries to 29.32

Project manager meetings =

Note: Project Manager attendance at progress, phase and field review meetings are manually entered on General Task 3

**PARK AVENUE & CONGRESS AVENUE
INTERSECTION IMPROVEMENTS**

For

PALM BEACH COUNTY

Prepared By:

R.J. BEHAR & COMPANY, INC.

26-Nov-08

PRICE PROPOSAL SUMMARY
R.J. BEHAR & COMPANY
CONGRESS AVENUE & PARK AVENUE INTERSECTION IMPROVEMENTS
SUMMARY: DRAINAGE DESIGN and PERMITTING

ACTIVITY	PROJECT MANAGER		SENIOR ENGINEER		DESIGN ENGINEER		CADD TECHNICIAN		MHR BY ACTIVITY	TOTAL COST BY ACTIVITY
	MAN HOURS	\$ 50.49 HOURLY RATE	MAN HOURS	\$ 47.80 HOURLY RATE	MAN HOURS	\$ 38.00 HOURLY RATE	MAN HOURS	\$ 21.49 HOURLY RATE		
Design Analysis	0	\$ -	0	\$ -	0	\$ -	0	\$ -	0	\$ -
Roadway Plans	2	\$ 100.98	4	\$ 191.20	8	\$ 304.00	4	\$ 85.96	18	\$ 682.14
Drainage Analysis	10	\$ 504.90	19	\$ 908.20	43	\$ 1,634.00	24	\$ 515.76	96	\$ 3,562.86
Utilities	0	\$ -	0	\$ -	0	\$ -	0	\$ -	0	\$ -
Permits	5	\$ 252.45	11	\$ 525.80	24	\$ 912.00	14	\$ 300.86	54	\$ 1,991.11
Signalization	0	\$ -	0	\$ -	0	\$ -	0	\$ -	0	\$ -
Signing & Marking	0	\$ -	0	\$ -	0	\$ -	0	\$ -	0	\$ -
TOTAL	17	\$ 858.33	34	\$ 1,625.20	75	\$ 2,850.00	42	\$ 902.58	168	\$ 6,236.11

TOTAL CONTRACT FEE COMPUTATION	
Basic Activities Fee (Salary Costs)	\$ 6,236.11
COST ELEMENTS AND ADDITIVES:	
(a) Overhead (161.80%)	\$ 10,090.03
SUBTOTAL: (Salary plus overhead)	\$ 16,326.14
(b) Lump Sum Operating Margin (12%)	\$ 1,959.14
(c) B2-Survey	\$ -
SUBTOTAL: Basic Fee	\$ 18,285.28
DIRECT EXPENSES	
(d) TIERRA (B3-Geotechnical)	\$ -
(e) Direct Reimbursables: Printing, courier, etc.	\$ -
SUBTOTAL EXPENSES	\$ -
TOTAL:	\$ 18,285.28

12/23/2008

**PRICE PROPOSAL SUMMARY
RJ BEHAR & COMPANY, INC.**

**CONGRESS AVENUE & PARK AVENUE
INTERSECTION IMPROVEMENTS
PALM BEACH COUNTY -**

BASIC CONTRACT FEE		
B1 ROADWAY DESIGN	\$	18,285.28
B2 SURVEY	\$	-
B3 GEOTECHNICAL SERVICES (ROADWAY)	\$	-
TOTAL BASIC FEE	\$	18,285.28
OPTIONAL SERVICES		
O1 ROADWAY		
A TRAFFIC CONTROL PLANS	\$	-
B LIGHTING	\$	-
SUBTOTAL	\$	-
O2 SURVEY		
A UNDERGROUND UTILITIES (LOCATIONS)	\$	-
B PARCEL SKETCHES	\$	-
SUBTOTAL	\$	-
O3 ENVIRONMENTAL		
A PREPARATION OF SEIR	\$	-
A-1 PUBLIC INVOLVEMNT	\$	-
A-2 ENGINEERING STUDIES AND REPORT	\$	-
A-3 ENVIRONMENTAL STUDIES AND REPORT	\$	-
A-4 MISCELLANEOUS	\$	-
B NOISE & AIR QUALITY	\$	-
C CULTURAL HISTORICAL	\$	-
D BIOLOGICAL ASSESSMENT	\$	-
E CONTAMINATION SITE ASSESSMENT	\$	-
SUBTOTAL	\$	-
O4 PROPERTY APPRAISALS		
A APPRAISALS	\$	-
TOTAL OPTIONAL SERVICES	\$	-
REIMBURSABLE SERVICES		
R PERMIT SCHEDULE		
A NORTHERN PB COUNTY IMPROVEMENT DISTRICT	\$	10,500.00
B SOUTH FLORIDA WATER MANAGEMENT DISTRICT	\$	625.00
C PALM BEACH COUNTY ENVIRONMENTAL RESOURCES MGMT	\$	-
SUBTOTAL	\$	11,125.00
TOTAL OPTIONAL SERVICES	\$	-
TOTAL SERVICES INCLUDING OPTIONAL SERVICES	\$	29,410.28

11/26/2008

**R.J. BEHAR & COMPANY
 PARK AVENUE & CONGRESS AVENUE INTERSECTION IMPROVEMENTS
 PALM BEACH COUNTY -
 MISCELLANEOUS AND OUT OF POCKET EXPENSES**

REPRODUCTION	NO. OF SETS	NO. OF SHEETS	11"x17"	8 1/2"x11"	8 1/2"x14" COMP BOOK	Plotting 11"x17"	TOTAL COST
Utility Contact	10	0	0				0
Typical Sections Package	3	0	0				
Phase I (Roadway)	10	0	0				0
Drainage Report Initial	0	25		0			
Drainage Report Final	0	25		0			
Phase II A (Roadway)	10	0	0				0
Phase III A (Roadway)	10	0	0				0
Phase IV (Roadway)	10	0	0				0
Final Plans	3	0					0
Comp Book (Roadway)	10	0				0	
Permit	10	67	0				0
Subtotal			0	0	0	0	0
Cost Per Sheet			\$ 0.16	\$ 0.08	\$ 0.08	\$ 0.75	
TRAVEL	NO. OF TRIPS	NO. OF MILES PER TRIP	NO. OF MILES	COST PER MILE	TOTAL COST		
To Permitting Agency	0	0	60	\$ 0.44	\$ -		
To Local Cities	0	0	0	\$ 0.44	\$ -		
To FDOT	0	0	0	\$ 0.44	\$ -		
To Project Site	0	0	80	\$ 0.44	\$ -		
To Palm Beach County	0	0	0	\$ 0.44	\$ -		
To Utility Meeting	0	0	80	\$ 0.44	\$ -		
SHIPPING/POSTAGE	NO. OF PACKAGES	UNIT COST	TOTAL COST				
Boxes Overnight Delivery (upto 5 lbs.)	0	\$ 17.41	\$ -				
Boxes Overnight Delivery (upto 20 lbs.)	0	\$ 27.79	\$ -				
Overnight Mail Letter	0	\$ 11.52	\$ -				

11/26/2008

**R.J. BEHAR & COMPANY
 FOREST HILL BLVD & CONGRESS AVE INTERSECTION IMPROVEMENTS
 PALM BEACH COUNTY - 2004102
 ACTIVITY: DESIGN ANALYSIS**

1 Typical Section Package	L.S.	0	24		0		Not Required
2 Master Plan	EA	0	40		0		Not Required
3 Horizontal/Vertical Design	L.S.	0	120		0		
4 Cross Section Design Files	L.S.	0	31		0		Not Required
5 Traffic Control Analysis	L.S.	0	32		0		
6 Geometric Computation Book	L.S.	0	32		0		
7 Contract Computation Book	L.S.	0	40		0		
8 Cost Estimates	LS	0	16		0		Not Required
9 Meetings	EA	0	4		0		
10 Right Turn Lane Study	LS	0	40		0		Not Required
11 Design Variations / Exceptions	LS	0	28		0		Not Required
SUBTOTAL					0		

**R.J. BEHAR & COMPANY
 PARK AVENUE & CONGRESS AVE INTERSECTION IMPROVEMENTS
 PALM BEACH COUNTY -
 ACTIVITY: ROADWAY PLANS**

1	Key Sheet	SHEET				0	
2	Typical Section	SHEET				0	
3	Pavement Design Package	Report				0	
3	General Notes	SHEET				0	
4	Summary of Quantities	SHEET				0	
5	Summary of Drainage Structures	SHEET	0	0		0	
6	Plan	SHEET	2	6		12	Create Drainage Layer
7	Profile	SHEET				0	
8	Miscellaneous Details Sheets	SHEET	1	6		6	
9	Drainage Structure Sheets	SHEET	0	0		0	Details
10	Cross Sections	EA				0	
11	Traffic Control Sheets	SHEET				0	
12	Utility Adjustment Sheets	SHEET				0	
13	Erosion Control Plan	SHEET	0	0		0	
14	SWPPP	SHEET				0	
15	Gravity Retaining Wall	SHEET				0	
16	Technical Special Provisions	SHEET				0	
	SUBTOTAL					18	

OPTIONAL SERVICES

--	--	--	--	--	--	--	--

11/26/2008

**R.J. BEHAR & COMPANY
 PARK AVENUE & CONGRESS AVE INTERSECTION IMPROVEMENTS
 PALM BEACH COUNTY
 ACTIVITY: DRAINAGE ANALYSIS**

1. Base Clearance	EA	0	0		0		
2. Design of Cross Drains	EA	0	0		0		
3. Design of Roadway Ditches	EA	0	0		0		
4. Design of Outfalls	EA	0	0		0		
5. Design of Stormwater Management Facility	LS	1	0		0		
6. Design of Storm Drains	LS	1	16		16		Includes spread and checking existing system
7. Design of French Drains	LS	1	16		16		
8. Drainage Design Report	L.S.	1	60		60		
9. Scour Calculations	LS	0	0		0		
10. Field Reviews	EA	1	4		4		
11. Pond Siting Report	LS	1	0		0		
SUBTOTAL					96		

11/26/2008

**R.J. BEHAR & COMPANY
 PARK AVENUE & CONGRESS AVE INTERSECTION IMPROVEMENTS
 PALM BEACH COUNTY
 ACTIVITY: PERMITS**

1. Preliminary Project Research	LS.	1	4		4		
2. SFWMD ERP Permit	LS	1	12		12		1 application and 2 agencies to Follow up
3. FDEP NPDES	EA	1	12		12		
4. Northern Districts Permit	LS	1	20		20		
5. ERM Permit	EA	1	0		0		No Trees
5. Meetings	EA	3	2		6		3 meetings - one person W/ permitting agencies
TOTAL					54		

11/26/2008

PALM BEACH COUNTY

Project Number:

PARK AVENUE & CONGRESS AVE INTERSECTION IMPROVEMENTS

Project Duration: 12 months

SALARY AND WAGE SUPPORT

[REDACTED]					
	COL. A				
PROJECT MANAGER	\$ 50.49				\$ 50.49
Sean O'Keefe 100%	\$ 50.49				
SENIOR ENGINEER	\$ 47.80				\$ 47.80
Juan Vazquez 10%	\$ 47.80				
DESIGN ENGINEER	\$ 38.00				\$ 38.00
Paola Cardenas 65%	\$ 38.32				
Hans Ribbeck 20%	\$ 33.66				
Nanette Akyaz 20%	\$ 31.81				
TECHNICIAN	\$ 21.49				\$ 21.49
Mauricio Pinzon 50%	\$ 25.96				
Mariana Urdaneta 50%	\$ 17.01				

11/26/2008

PERMIT SCHEDULE

(PERMIT APPLICATION FEES)

		Estimated Permit Application Fee
A	NORTHERN DRAINAGE DISTRICT	\$ 10,500.00
	Estimate = \$500.00 + 2% Eng Est. (\$ 500,000.00)	
B	SOUTH FLORIDA WATER MANAGEMENT DISTRICT	\$ 625.00
	In accordance with SFWMD Part V Processing Fees 40E-6. 601g Standard Permit Application or Standard Permit Modification Application related to use of State or local Agency (Types Sp-3)	
C	PALM BEACH COUNTY ENVIRONMENTAL RESOURCES MGMT	\$ -
	According to ERM, No tree or vegetation permit required. Excavation will be covered by DEP	
D	FLORIDA DEPARTMENT OF ENVIRONMENTAL PROTECTION	\$ -
	Estimate based on Generic Permit for Stormwater Discharge from Large and Small Construction Activities, Small Construction (1-5 Acres)	

NO CHANGE FROM THE AUGUST 08 PROPOSAL



August 5, 2008
May 22, 2008

Mr. Nisar M. Khan, Ph.D., P.E., PTOE
Senior Associate
Erdman Anthony And Associates, Inc.
1402 Royal Palm Beach Blvd, Bldg 500
Royal Palm Beach, Fl. 33411

Re: **Proposal for Geotechnical Services**
Park Avenue & N. Congress Avenue Intersection Improvement
Palm Beach County, Florida
Tierra Proposal No.: 0805-186

Dear Nisar:

As requested, Tierra, Inc. is pleased to submit this proposal for the above-referenced project. It is our understanding that the project will include installation of mast arm at the SW corner of Park Avenue and North Congress Avenue in Palm Beach County, Florida. Also included in the project is about 500 linear feet of roadway widening. This proposal includes an outline of our propose scope of work, an estimate of the total fees, and our anticipated schedule for completion of the work.

PROPOSED SCOPE OF WORK

All work performed by Tierra, Inc. will be in general accordance with FDOT/PBC standards. We understand that one mast arm will be installed at the intersection. One SPT boring will be drilled to a depth of 30 feet for the proposed mast arm structure location. Additionally, as requested 2 auger borings to 5 feet deep will be performed for the roadway widening.

Within the SPT boring, disturbed sample collection will be performed in general accordance with the requirements of ASTM D 1587, respectively. Boring will be approximately located in the field by our personnel by measuring distances with a tape from known reference points. We assume that others will identify any underground utilities existing in the exploratory area. Elevations at boring locations can be interpreted from topographic plans if furnished by others.

NO CHANGE FROM THE AUGUST 08 PROPOSAL

Upon completion of the field exploration, laboratory testing will be performed on selected samples. The study will be summarized in accordance with the FDOT's Soil and Foundation Manual, 2004.

A geotechnical engineer will evaluate the results of all drilling and laboratory testing. A report will be issued that contains the exploration data, a discussion of the site and subsurface conditions, recommendations for foundation design, and a discussion of some construction considerations.

ESTIMATED FEES

It is proposed that the fee for the performance of the services outlined above is determined on a unit price basis in accordance with the attached Fee Schedule and that the work be performed pursuant to Tierra's General Conditions enclosed herewith and incorporated into this proposal. On the basis of the proposed quantities, it is estimated that the total fee will be approximately \$4,210.

Our estimate covers the work needed to present our findings and recommendations in a formal report. Not included are reviews of foundation drawings, preparation of construction specifications, special conferences and any other work requested after submittal of our report.

This estimated fee assumes that the site is readily accessible to our truck-mounted drilling equipment. Any bulldozer or wrecker services required to provide access pathways or mobility assistance to our truck-mounted drill rig are not included in this proposal.

Boring, sampling, and testing requirements are a function of the subsurface conditions encountered. Therefore, the estimated fee previously indicated is approximate, and compensation for the exploration will be based on the actual work and tests performed. We will endeavor to keep the exploration cost at a minimum consisting with good engineering practice.

NO CHANGE FROM THE AUGUST 08 PROPOSAL

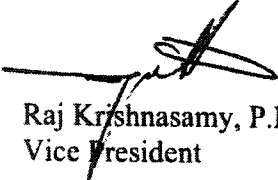
SCHEDULE AND AUTHORIZATION

Tierra will proceed with the work after receipt of a signed copy of this proposal. With our present schedule, we can commence work within several days of project approval (weather permitting) and fieldwork will take one day to complete. The written report can be submitted about 1 week after completion of the field exploration, depending on the extent of the laboratory-testing program. Verbal preliminary recommendations can be made to appropriate parties prior to submittal of the written report.

We at Tierra, Inc. appreciate the opportunity to submit this proposal and look forward to working with you on this project. If you should have any questions concerning our proposal, please contact our office.

Respectfully submitted,

TIERRA, INC.


Raj Krishnasamy, P.E.
Vice President

Attachments: - Fee Estimate

AUTHORIZED BY:	INVOICE TO:
Name:	Firm:
Title:	Name:
Date:	Address:

NO CHANGE FROM THE AUGUST 08 PROPOSAL

TIERRA, INC.
ATTACHMENT
FEE SCHEDULE FOR GEOTECHNICAL SERVICES

I.	FIELD INVESTIGATION	Unit	# of Units	Unit Price	Total
	Mobilization of Men and Equipment Truck-Mounted Equipment	Trip	1	\$ 350.00	\$ 350.00
	Standard Penetration Test Borings (By Truck-Mounted Equipment)				
	0 - 50 ft depth	L.F.	30	\$ 12.00	\$ 360.00
	50 - 100 ft depth	L.F.	0	\$ 14.00	\$ 0.00
	Grout-Seal Boreholes (By Truck-Mounted Equipment)				
	0 - 50 ft depth	L.F.	30	\$ 4.50	\$ 135.00
	50 - 100 ft depth	L.F.	0	\$ 5.00	\$ 0.00
	Casing Allowance (By Truck-Mounted Equipment)				
	0 - 50 ft depth	L.F.	15	\$ 6.00	\$ 90.00
	50 - 100 ft depth	L.F.	0	\$ 8.00	\$ 0.00
	Rock Coring (Structures) (By Truck-Mounted Equipment)				
	0 - 50 ft deep	L.F.	0	\$ 30.00	\$ 0.00
	50 - 100 ft deep	L.F.	0	\$ 36.00	\$ 0.00
	Borehole Permeability Tests	Test	1	\$ 250.00	\$ 250.00
	Traffic Control (1-man crew with safety equipments)	Day	0	\$ 800.00	\$ 0.00
	Auger Borings (Roadway)	L.F.	10	\$ 7.50	\$ 75.00
	Extra Split Spoon Samples	Each	0	\$ 30.00	\$ 0.00
	Hand Muck Probes (2-man crew)	Day	0	\$ 800.00	\$ 0.00
	Double Ring Infiltration Test	Test	0	\$ 500.00	\$ 0.00
	Pavement Cores, Asphalt	Each	0	\$ 85.00	\$ 0.00
	Core Machine Rental	Day	0	\$ 300.00	\$ 0.00
II.	LABORATORY TESTING				
	Visual Examination by Project Engineer	Hour	1	\$ 85.00	\$ 85.00
	Natural Moisture Content Tests	Test	2	\$ 10.00	\$ 20.00
	Grain-Size Analysis - Full Gradation	Test	2	\$ 60.00	\$ 120.00

NO CHANGE FROM THE AUGUST 08 PROPOSAL

TIERRA, INC. ATTACHMENT FEE SCHEDULE FOR GEOTECHNICAL SERVICES

	Unit	# of Units		Unit Price		Total
Grain-Size Analysis - Single Sieve	Test	0	\$	25.00	\$	0.00
Organic Content Tests	Test	2	\$	35.00	\$	70.00
Atterberg Limit Tests	Test	1	\$	75.00	\$	75.00
Environmental Tests (pH, sulfates, chlorides, resistivity)	Set	1	\$	150.00	\$	150.00
LBR Test	Test	0	\$	250.00	\$	0.00
 III. FIELD ENGINEERING AND TECHNICAL SERVICES						
Site Recon./Utility Coordination/Traffic Control						
Sr. Engineering Technician	Hour	8	\$	55.00	\$	440.00
Engineering Technician	Hour	0	\$	45.00	\$	0.00
 IIIA. ENGINEERING AND TECHNICAL SERVICES						
Principal Engineer	Hour	2	\$	125.00	\$	250.00
Senior Geotechnical Engineer	Hour	5	\$	100.00	\$	500.00
Project Engineer	Hour	12	\$	85.00	\$	1,020.00
Draftperson	Hour	4	\$	55.00	\$	220.00
Administrative Assistant	Hour	0	\$	40.00	\$	0.00
TOTAL FEE FOR GEOTECHNICAL SERVICES (MAST ARMS & ROADWAY WIDENING) = \$						4,210.00



Attachment #3



Project Schedule
12/10/2008

**N. Congress Ave and Park Ave
Intersection Improvements**

PBC Project No. 2008602

Notice to Proceed on Roadway Plans		1/11/2009
Obtain survey	4 Weeks	2/8/2009
Phase IB/IC (Typical Section and Master Plan)	3 Weeks	3/1/2009
PBC Review Complete	3 Weeks	3/22/2009
Phase ID (35%) Submittal	7 Weeks	5/10/2009
PBC Review Complete	3 Weeks	5/31/2009
Phase IID (65%) Submittal	8 Weeks	7/26/2009
PBC Review Complete	3 Weeks	8/16/2009
Phase IIIC (96%) Submittal	7 Weeks	10/4/2009
PBC Review Complete	3 Weeks	10/25/2009
Phase IVB (100%) Submittal	7 Weeks	12/13/2009
PBC Review Complete	3 Weeks	1/3/2010
All Permits Received	3 Weeks	1/24/2010
Final Submittal	3 Weeks	2/14/2010
Total Design Schedule	13 Months	