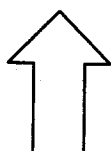
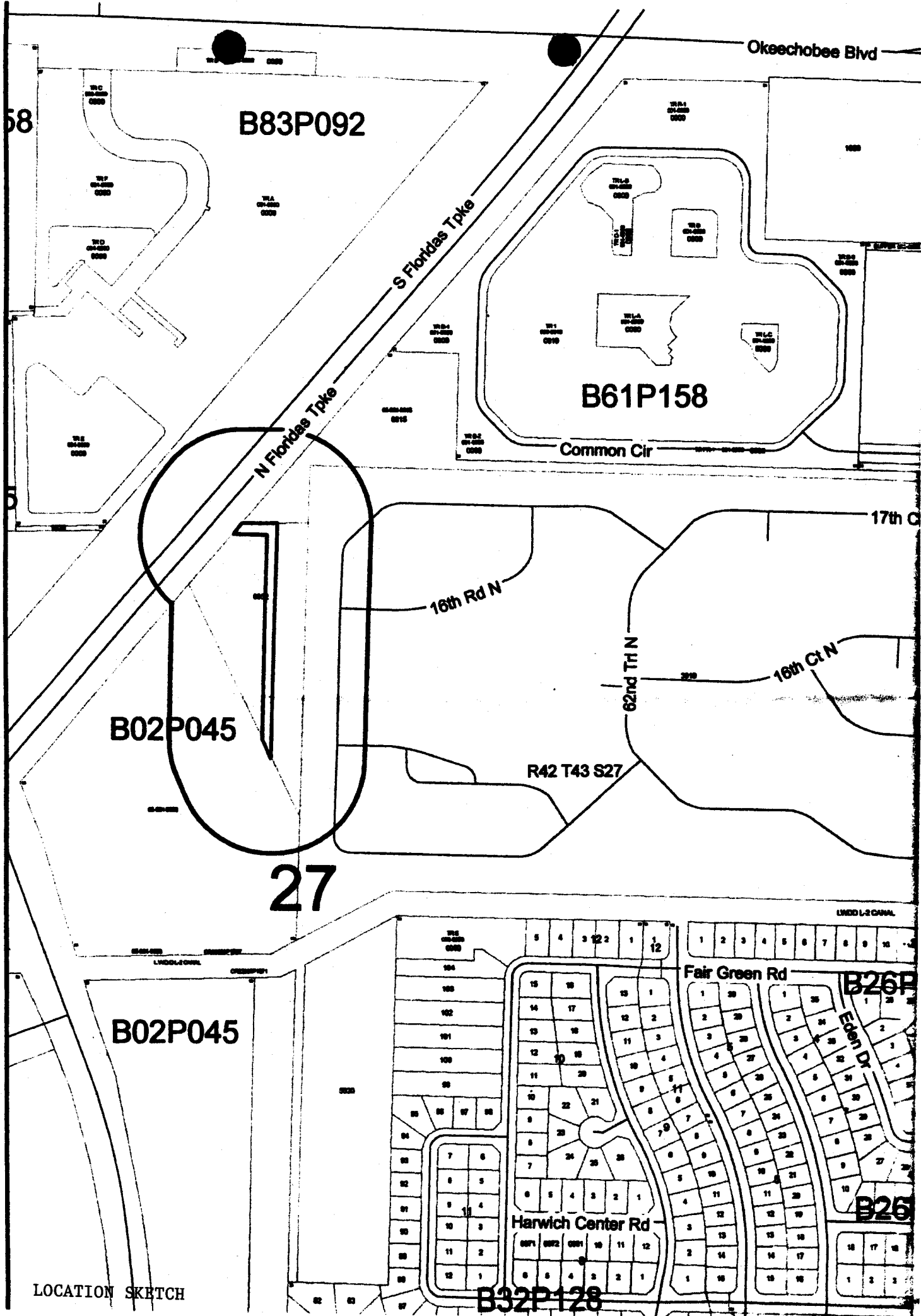


**ABANDONING PORTIONS OF UNIMPROVED
 25' & 30' WIDE PLATTED RIGHTS-OF-WAY
 ADJOINING TRACT 5, BLOCK 4
 PALM BEACH FARMS PLAT NO. 3
 PLAT BOOK 2, PAGES 45-54**

LOCATION SKETCH

N





Okeechobee Blvd

58

B83P092

B61P158

N Florida Tpke

S Florida Tpke

Common Cir

17th Ct

16th Rd N

B02P045

R42 T43 S27

62nd Trl N

16th Ct N

27

B02P045

Fair Green Rd

B26P

Harwich Center Rd

B26

B32P128

LOCATION SKETCH

RESOLUTION NO. R-2009-_____

RESOLUTION OF THE BOARD OF COUNTY COMMISSIONERS OF PALM BEACH COUNTY, FLORIDA, ABANDONING PORTIONS OF THE UNIMPROVED 25 FOOT AND 30 FOOT WIDE PLATTED RIGHTS-OF-WAY, ADJOINING TRACT 5, BLOCK 4, PALM BEACH FARMS PLAT NO. 3, AS RECORDED IN PLAT BOOK 2, PAGES 45-54, PUBLIC RECORDS OF PALM BEACH COUNTY, FLORIDA.

WHEREAS, the Board of County Commissioners of Palm Beach County, Florida, pursuant to authority in Section 336.09, Florida Statutes, and Ordinance No. 86-18 known as the Palm Beach County Right-of-Way Abandonment and Plat Vacation Ordinance, as amended, and the petition of Palm Beach County Water Utilities Department, called a public hearing to be held in the County Commissioners' Chambers, at the Governmental Office Complex, West Palm Beach, Florida, on August 18, 2009, to consider and determine whether or not Palm Beach County would vacate, abandon, discontinue and close, renounce and disclaim any right or interest of the County to that certain portion of the 25 foot wide and 30 foot wide platted rights- of-way and;

WHEREAS, in accordance with Ordinance No. 86-18, as amended, notice of the holding of such meeting was duly published in the Palm Beach Post on August 1, 2009, and;

WHEREAS, this Board did hold said hearing as advertised and determined that such action will not materially interfere with the County Road System and will not deprive any person of a reasonable means of ingress and egress from at least one County, State or Federal highway.

RESOLUTION NO. R-2009-_____

NOW, THEREFORE, BE IT RESOLVED BY THE BOARD OF COUNTY COMMISSIONERS OF PALM BEACH COUNTY, FLORIDA, that:

1. The foregoing recitals are hereby reaffirmed and ratified.
2. That certain 25 foot wide and 30 foot wide unimproved rights-of-way are hereby abandoned and closed as rights-of-way and this Board does hereby renounce and disclaim any right or interest of Palm Beach County and the Public in and to those certain unimproved 25 foot wide and 30 foot wide rights-of-way, more fully described in the legal description and sketch attached hereto and made a part hereof.
3. Notice of the adoption of this Resolution shall be published once in the Palm Beach Post within thirty (30) days of the date of adoption of this Resolution in accordance with Section 336.10, Florida Statutes and Ordinance No. 86-18.

RESOLUTION NO. R-2009-_____

The foregoing Resolution was offered by Commissioner _____, who moved its adoption. The motion was seconded by Commissioner _____ and, upon being put to a vote, the vote was as follows:

- Commissioner John F. Koons, Chairman
- Commissioner Burt Aaronson, Vice Chairman
- Commissioner Karen T. Marcus
- Commissioner Shelley Vana
- Commissioner Steven L. Abrams
- Commissioner Jess R. Santamaria
- Commissioner Priscilla A. Taylor

The Chair thereupon declared the Resolution duly passed and adopted this _____ day of _____, 2009.

**PALM BEACH COUNTY, FLORIDA BY
ITS BOARD OF COUNTY COMMISSIONERS**

Sharon R. Bock, Clerk & Comptroller

BY: _____
Deputy Clerk

**APPROVED AS TO FORM
AND LEGAL SUFFICIENCY**

BY: _____
County Attorney

**WATER TREATMENT PLANT NO. 8
25' AND 30' RIGHT OF WAY ABANDONMENT**

25 FOOT PLATTED RIGHT-OF-WAY ADJOINING TRACTS 5 AND 6,
AND A 30 FOOT PLATTED RIGHT OF WAY ADJOINING TRACT 5, BLOCK 4,
PALM BEACH FARMS CO. PLAT NO 3, PLAT BOOK 2, PAGES 45-54,
SECTION 27, TOWNSHIP 43 SOUTH, RANGE 42 EAST,
PALM BEACH COUNTY, FLORIDA

LEGAL DESCRIPTION:

A PORTION OF THAT CERTAIN 25.00 FOOT PLATTED RIGHT-OF-WAY LYING EAST OF AND ADJOINING TRACTS 5 AND 6, BLOCK 4, AND A PORTION OF THAT CERTAIN 30.00 FOOT PLATTED RIGHT-OF-WAY LYING NORTH OF AND ADJOINING TRACT 5, BLOCK 4 PALM BEACH FARMS CO. PLAT NO 3, AS RECORDED IN PLAT BOOK 2, AT PAGES 45 THROUGH 54 OF THE PUBLIC RECORDS OF PALM BEACH COUNTY, FLORIDA, BEING MORE PARTICULARLY DESCRIBED AS FOLLOWS:

COMMENCE AT THE SOUTHEAST CORNER OF TRACT 6, BLOCK 4, PALM BEACH FARMS CO. PLAT NO. 3, AS RECORDED IN PLAT BOOK 2, AT PAGES 45 THROUGH 54 OF THE PUBLIC RECORDS OF PALM BEACH COUNTY, FLORIDA. THENCE N 01°36'36" E ALONG THE EAST LINE OF SAID TRACT 6, FOR A DISTANCE OF 650.43 FEET; TO THE POINT OF BEGINNING; THENCE CONTINUE N01°36'36"E ALONG THE EAST LINE OF SAID TRACT 6, AND THE EAST LINE OF TRACT 5 OF SAID BLOCK 4, FOR A DISTANCE OF 670.51 FEET TO THE NORTHEAST CORNER OF SAID TRACT 5; THENCE S89°10'01"W ALONG THE NORTH LINE OF SAID TRACT 5 FOR A DISTANCE OF 89.40 FEET TO A POINT ON THE EASTERLY RIGHT OF WAY LINE OF THE FLORIDA'S TURNPIKE AS SHOWN ON THAT CERTAIN FLORIDA DEPARTMENT OF TRANSPORTATION RIGHT OF WAY MAP FPID NO. 406112-1 SHEET 4 OF 9; THENCE N40°38'55"E ALONG THE SAID EASTERLY RIGHT OF WAY LINE FOR A DISTANCE OF 40.14 FEET; THENCE DEPARTING FROM SAID EASTERLY RIGHT OF WAY LINE N89°10'01"E ALONG A LINE PARALLEL WITH AND 30 FEET NORTH OF AS MEASURED AT RIGHT ANGLES TO THE NORTH LINE OF SAID TRACT 5 FOR A DISTANCE OF 89.13 FEET, SAID PARALLEL LINE BEING COINCIDENT WITH THE SOUTH LINE OF TRACT 1 OF SAID BLOCK 4; THENCE S01°36'36"W ALONG A LINE PARALLEL WITH AND 25 FEET EAST OF AS MEASURED AT RIGHT ANGLES TO THE EAST LINE OF SAID TRACT 5 AND SAID TRACT 6 FOR A DISTANCE OF 749.58 FEET; THENCE N25°56'34"W ALONG THE SOUTHWESTERLY LINE OF A PARCEL OF LAND DESCRIBED IN DEED BOOK 1099, AT PAGE 224 FOR A DISTANCE OF 54.05 FEET TO THE POINT OF BEGINNING.

SAID LANDS SITUATE WITHIN PALM BEACH COUNTY, FLORIDA.

SAID LAND CONTAINING 0.47 ACRES MORE OR LESS.

NOTES:

- 1) THIS SKETCH AND LEGAL DESCRIPTION DOES NOT REPRESENT A FIELD SURVEY. (THIS IS NOT A SURVEY)
- 2) THIS SKETCH AND LEGAL DESCRIPTION WAS NOT ABSTRACTED FOR EASEMENTS AND OR RIGHTS OF WAY OF RECORD OTHER THAN SHOWN.
- 3) THIS SKETCH IS NOT VALID WITHOUT THE ORIGINAL SIGNATURE AND RAISED EMBOSSED SEAL OF A FLORIDA REGISTERED SURVEYOR.
- 4) THE LEGAL DESCRIPTION SHOWN HEREON WAS CREATED BY THE UNDERSIGNING FIRM AS DIRECTED BY PALM BEACH COUNTY WATER UTILITIES DEPARTMENT.
- 5) BEARINGS SHOWN HEREON ARE REFERENCED TO THE STATE PLANE COORDINATE SYSTEM, FLORIDA EAST ZONE, NORTH AMERICAN DATUM 1983 (ADJUSTMENT OF 1990) NORTH SOUTH QUARTER SECTION LINE OF SECTION 27 HAVING A BEARING OF S01°47'04"W.

HELLER-WEAVER AND SHEREMETA, INC.
FLORIDA STATE L.B. NO. 3449

BY: DANIEL C. LAAK
PROFESSIONAL SURVEYOR AND MAPPER
FLORIDA REG. NO. 5118

LEGEND:

P.B. PLAT BOOK
PG. PAGE(S)
O.R.B. OFFICIAL RECORDS BOOK

REVISIONS
8-08-09 PER COUNTY'S
COMMENTS



Heller - Weaver and Sheremeta, inc.

Engineers ... Surveyors and Mappers
310 S.E. 1st Street, Suite 5 Delray Beach, Florida 33483
(561) 243-8700 - Phone (561) 243-8777 - Fax

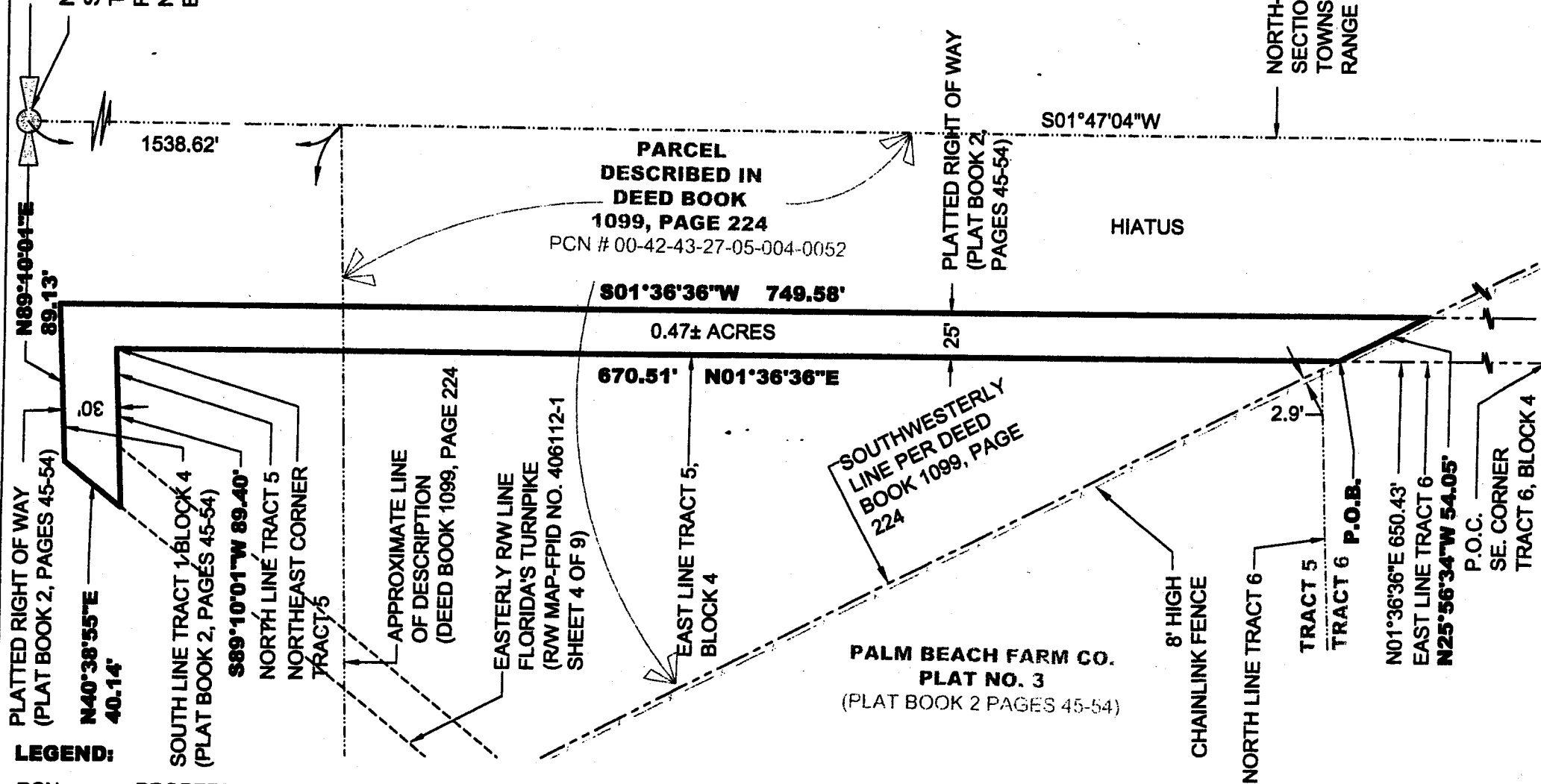
DATE:	4-15-2009
SCALE:	N/A
DRAWN BY:	W. ROLLE
CHECKED BY:	D. C. LAAK
SHEET:	1 OF 2
FILE NO.	09-15431.008-SS1

**WATER TREATMENT PLANT NO. 8
25' AND 30' RIGHT OF WAY ABANDONMENT**

25 FOOT PLATTED RIGHT-OF-WAY
ADJOINING TRACTS 5 AND 6, AND A 30 FOOT PLATTED RIGHT OF WAY
ADJOINING TRACT 5, BLOCK 4,
PALM BEACH FARMS CO., PLAT NO 3, PLAT BOOK 2, PAGES 45-54,
SECTION 27, TOWNSHIP 43 SOUTH, RANGE 42 EAST,
PALM BEACH COUNTY, FLORIDA

NORTH LINE
SECTION 27,
TOWNSHIP 43S.,
RANGE 42E.
N 863831.813
E 935625.349

NORTH-SOUTH QUARTER
SECTION LINE SECTION 27,
TOWNSHIP 43S.,
RANGE 42E.



LEGEND:

PCN PROPERTY CONTROL NUMBER
P.O.B. POINT OF BEGINNING
P.O.C. POINT OF COMMENCEMENT

REVISIONS
6/08/09 PER COUNTY'S COMMENTS



E.B. NO. 0003449

Heller - Weaver and Sheremeta, inc.
Engineers ... Surveyors and Mappers
310 S.E. 1st Street, Suite 4 Delray Beach, Florida 33483
(561) 243-8700 - Phone (561) 243-8777 - Fax

DATE:	4-15-2009
SCALE:	1" = 80'
DRAWN BY:	W. ROLLE
CHECKED BY:	D. C. LAAK
SHEET:	2 OF 2
FILE NO.	09-15431.008-SS2