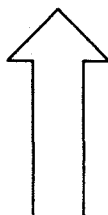


LOCATION SKETCH
SCALE: N.T.S.

**ABANDONMENT OF PLATS OF OKEECHOBEE FRUIT LANDS CO'S
SUBDIVISION OF -SECTION 3, TOWNSHIP 45 SOUTH, RANGE 36 EAST,
PLAT BOOK 1, PAGE 108
&
OKEECHOBEE FRUIT LANDS CO'S SUBDIVISION OF SECTION 10, TOWNSHIP
45 SOUTH, RANGE 36 EAST, PLAT BOOK 1, PAGE 115,
WHICH INCLUDES THE PROPOSED ROADWAYS, EXCEPT THE NORTH 160 FEET
THEREOF FOR THE RIGHT OF WAY OF BOLLES CANAL**

LOCATION SKETCH

N



RESOLUTION NO. R-2009-_____

RESOLUTION OF THE BOARD OF COUNTY COMMISSIONERS OF PALM BEACH COUNTY, FLORIDA, VACATING THE PLATS OF OKEECHOBEE FRUIT LANDS CO'S SUBDIVISION OF SECTION 3, TOWNSHIP 45 S, RANGE 36 E, PALM BEACH COUNTY, FLORIDA, LESS THE NORTH 160 FEET THEREOF FOR THE RIGHT- OF-WAY OF BOLLES CANAL (LEVEE L-21) RECORDED IN PLAT BOOK 1, PAGE 108, WITHIN THE PUBLIC RECORDS OF PALM BEACH COUNTY, FLORIDA, AND OKEECHOBEE FRUIT LANDS CO'S SUBDIVISION OF SECTION 10, TOWNSHIP 45 S, RANGE 36 E, PALM BEACH COUNTY, FLORIDA, AS RECORDED IN PLAT BOOK 1, PAGE 115, RECORDED IN THE PUBLIC RECORDS OF PALM BEACH COUNTY, FLORIDA, WHICH INCLUDES THE PROPOSED ROADWAYS.

WHEREAS, the Board of County Commissioners of Palm Beach County, Florida, has considered the vacation pursuant to authority in Sections 177.101 and 336.09 of the Florida Statutes and Ordinance No. 86-18 known as the Palm Beach County Right-of-Way Abandonment and Plat Vacation Ordinance, as amended, of the plats of Okeechobee Fruit Lands Co's Subdivision of Section 3, Township 45 S, Range 36 E, Palm Beach County, Florida, less the north 160 feet thereof for the right-of-way of Bolles Canal (Levee L-21), recorded in Plat Book 1, Page 108, within the public records of Palm Beach County, Florida, and Okeechobee Fruit Lands Co's Subdivision of Section 10, Township 45 S, Range 36 E, Palm Beach County, Florida, as recorded in Plat Book 1, Page 115, recorded in the public records of Palm Beach County, Florida, which includes the proposed roadways; and

WHEREAS, said petition to vacate said plats was submitted by Okeelanta Corporation, a Delaware Corporation, authorized to transact business in the State of Florida; and

WHEREAS, this petition substantially complies with the terms and conditions of the vacation as set forth in said Ordinance; and

WHEREAS, this Board, while convened in regular session on October 6, 2009, determined that such action will not materially interfere with the County Road System and will not deprive any person of a reasonable means of ingress and egress from at least one County, State or Federal highway.

RESOLUTION NO. R-2009-_____

NOW, THEREFORE, BE IT RESOLVED BY THE BOARD OF COUNTY COMMISSIONERS OF PALM BEACH COUNTY, FLORIDA, that:

1. The foregoing recitals are hereby reaffirmed and ratified.
2. The plats of Okeechobee Fruit Lands Co's Subdivision of Section 3, Township 45 S, Range 36 E, Palm Beach County, Florida, (less the north 160 feet thereof for the right-of-way of Bolles Canal, Levee L-21), recorded in Plat Book 1, Page 108, within the public records of Palm Beach County, Florida and Okeechobee Fruit Lands Co's Subdivision of Section 10, Township 45 S, Range 36 E, Palm Beach County, Florida, as recorded in Plat Book 1, Page 115, recorded in the public records of Palm Beach County, Florida, which includes the proposed roadways, are hereby vacated and the proposed roadways rights-of-way are hereby abandoned and closed as roadway rights-of-way and this Board does hereby renounce and disclaim any right or interest of Palm Beach County and the Public in and to the plats and the proposed roadways rights-of-way, more fully described in the legal description and sketch attached hereto and made a part hereof.
3. Notice of the adoption of this Resolution shall be published once in the Palm Beach Post within thirty (30) days of the date of adoption of this Resolution in accordance with Section 336.10, Florida Statutes and Ordinance No. 86-18.

RESOLUTION NO. R-2009-_____

The foregoing Resolution was offered by Commissioner _____, who moved its adoption. The motion was seconded by Commissioner _____ and, upon being put to a vote, the vote was as follows:

District 2 - JOHN F. KOONS, Chairman

District 5 - BURT AARONSON, Vice Chair

District 1 - KAREN T. MARCUS

District 3 - SHELLEY VANA

District 4 - STEVEN L. ABRAMS

District 6 - JESS R. SANTAMARIA

District 7 - PRISCILLA A. TAYLOR

The Chair thereupon declared the Resolution duly passed and adopted this _____ day of _____, 2009.

**PALM BEACH COUNTY, FLORIDA, BY ITS
BOARD OF COUNTY COMMISSIONERS**

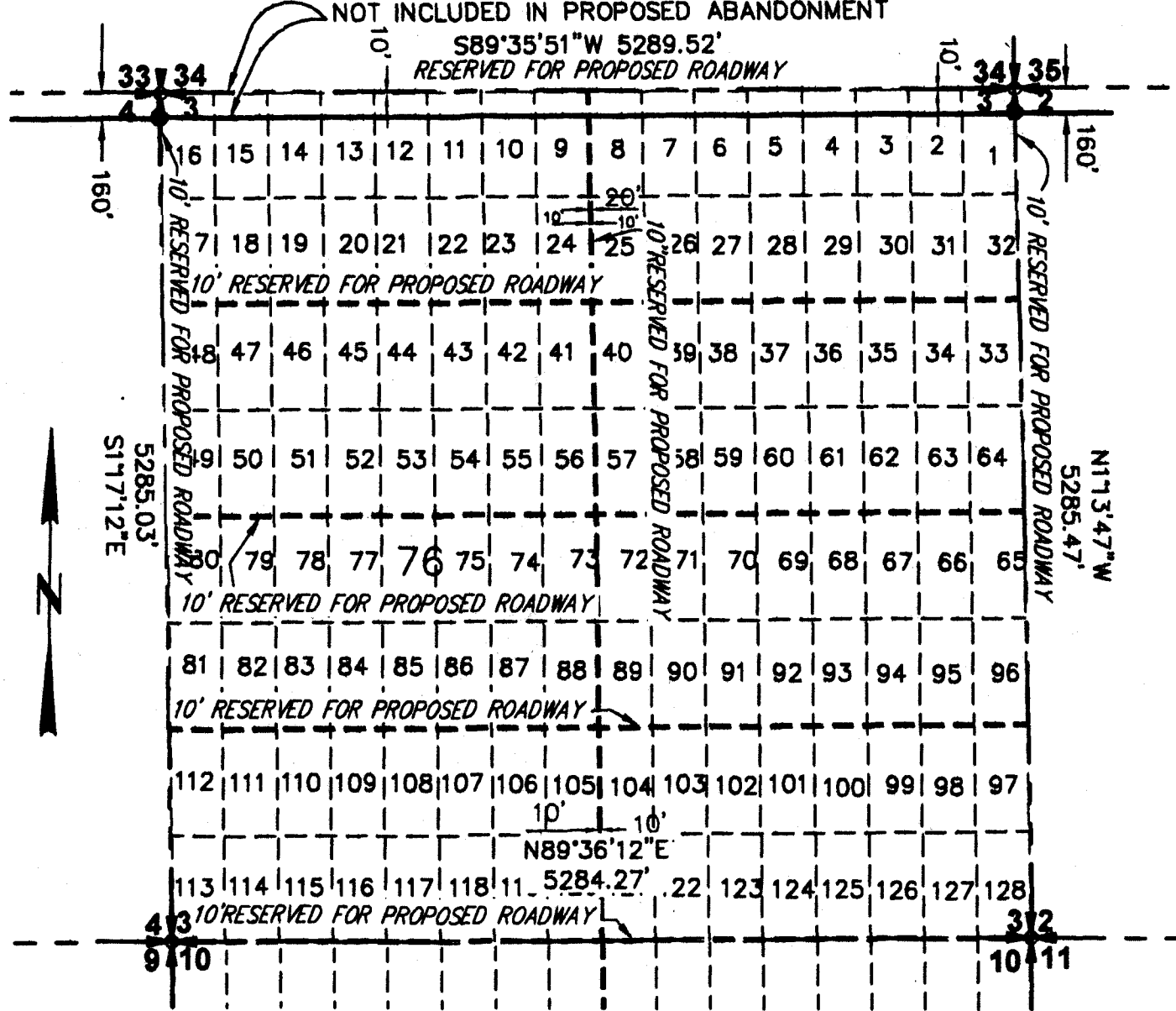
Sharon R. Bock, Clerk & Comptroller

BY: _____
Deputy Clerk

**APPROVED AS TO FORM AND
LEGAL SUFFICIENCY**

BY: _____
County Attorney

THE NORTH 160 FEET OF SECTION 3 WHICH IS THE SAME AS THE NORTH 160 FEET OF LOTS 1 THROUGH 16 OF THE PLAT OF OKEECHOBEE FRUITLANDS COMPANY'S SUBDIVISION OF SECTION 3 AS RECORDED IN PLAT BOOK 1, PAGE 108 OF THE PUBLIC RECORDS OF PALM BEACH COUNTY, FLORIDA, FOR THE RIGHT-OF-WAY OF BOLLES CANAL (LEVEE L-21) ACCORDING TO DEED RECORDED IN OFFICIAL RECORDS BOOK 8, PAGE 287 PUBLIC RECORDS OF PALM BEACH COUNTY, FLORIDA, NOT INCLUDED IN PROPOSED ABANDONMENT



SEE DESCRIPTIONS AND CERTIFICATION ON SHEET 3 OF 3 ATTACHED HERETO AND MADE A PART HEREOF

THERE IS NO ROAD DEDICATION TO THE PUBLIC ON THIS PLAT STRIP OF 10 FEET WIDE RESERVED ALONG FRONT OF EACH LOT FOR PROPOSED ROADWAY PLAT BOOK 1, P.108

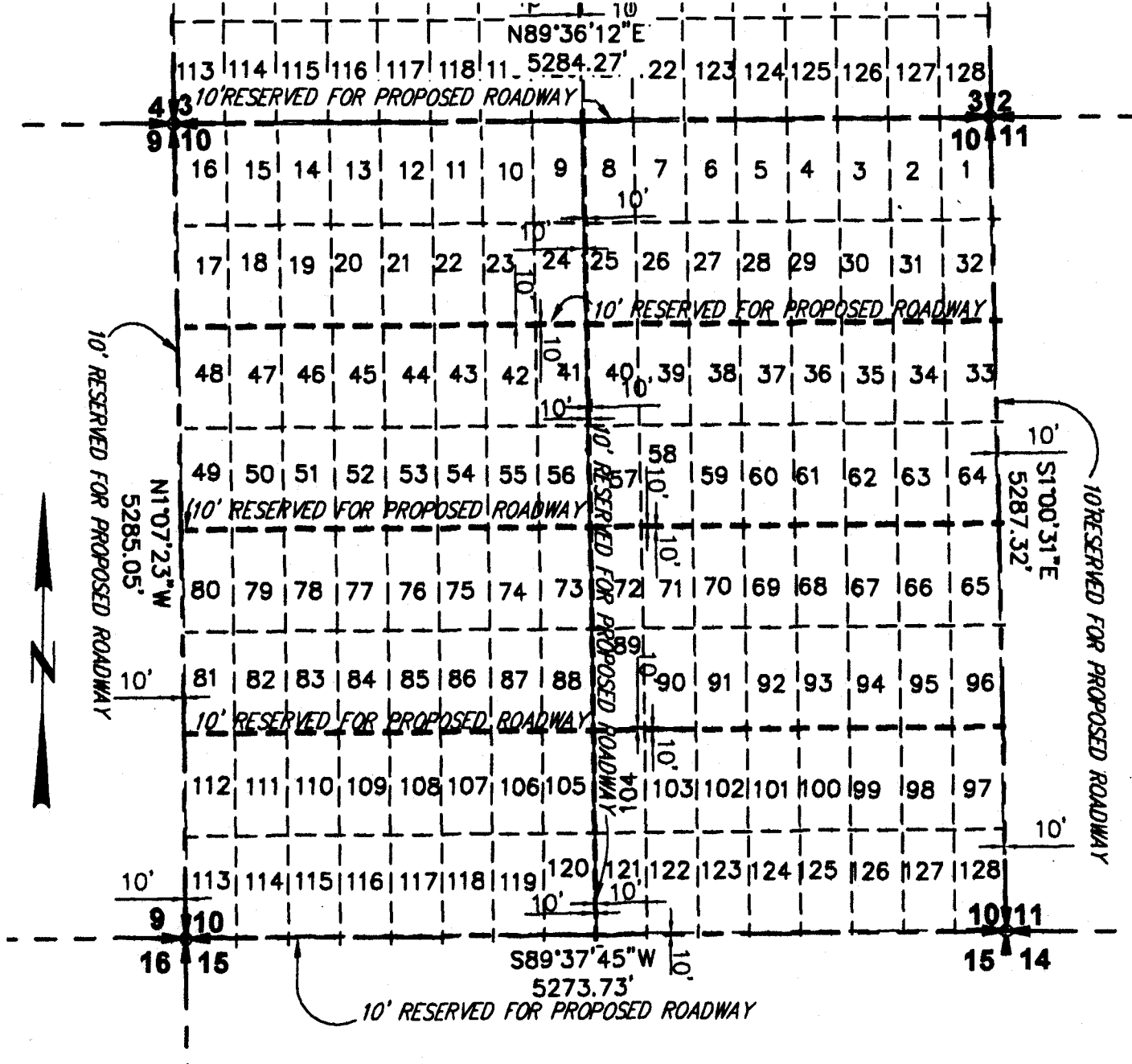
SKETCH OF DESCRIPTION FOR: OKEELANTA CORPORATION - PROPOSED VACATING OF THE OKEECHOBEE FRUITLANDS COMPANY'S SUBDIVISION OF SECTION 3, TOWNSHIP 45 SOUTH, RANGE 36 EAST, AS RECORDED IN PLAT BOOK 1, PAGE 108 PALM BEACH COUNTY FLORIDA

Scale: 1"=1000'
 Note Book No. 45-36
 Page

PAG SURVEYORS, INC. L.B. 3411

1016 Southeast 4th Street - Phone (561) 992-6615
 Belle Glade, FL 33430-4330

Date 7-29-09
 Work Order No. 09-1-0308
 Sheet 1 OF 3



SEE DESCRIPTIONS AND CERTIFICATION ON SHEET 3 OF 3 ATTACHED HERETO AND MADE A PART HEREOF

THERE IS NO ROAD DEDICATION TO THE PUBLIC ON THIS PLAT STRIP OF 10 FEET WIDE RESERVED ALONG FRONT OF EACH LOT FOR PROPOSED ROADWAY PLAT BOOK 1, P.115

SKETCH OF DESCRIPTION FOR: **OKEELANTA CORPORATION - PROPOSED VACATING OF THE OKEECHOBEE FRUIT LANDS COMPANY'S SUBDIVISION OF SECTION 10, TOWNSHIP 45 SOUTH, RANGE 36 EAST, AS RECORDED IN PLAT BOOK 1, PAGE 115**
 PALM BEACH COUNTY
 FLORIDA

Scale, 1" = 1000'
 Note Book 45-36
 No. Page

PAG SURVEYORS, INC. L.B. 3411
 1016 Southeast 4th Street - Phone (561) 988-8615
 Belle Glade, FL 33430-0300

Date 7-29-09
 Work Order No. 09-1-030B

Sheet 2 OF 3

PAG SURVEYORS, INC.
CERTIFICATE OF AUTHORIZATION NO. LB 3411
1016 SOUTHEAST 4TH STREET
BELLE GLADE, FL 33430-4330

SKETCH OF DESCRIPTION FOR OKEELANTA CORPORATION FOR THE INTENDED PURPOSE OF VACATING AND ANNULLING THE FOLLOWING PLATS:

1. OKEECHOBEE FRUIT LANDS CO'S SUBDIVISION OF SECTION 3, TOWNSHIP 45 SOUTH, RANGE 36 EAST, PALM BEACH COUNTY, FLORIDA, AS RECORDED IN PLAT BOOK 1, PAGE 108, PUBLIC RECORDS OF PALM BEACH COUNTY, FLORIDA.

LESS AND NOT INCLUDING: the North 160 feet thereof, which is the same as the North 160 feet of Lots 1 through 16 of said Plat, for the right-of-way of Bolles Canal, (Levee L-21) as recorded in Official Records Book 8, Page 287 of the public records of Palm Beach County, Florida.

Containing: 821.973 Acres

2. OKEECHOBEE FRUIT LANDS CO'S SUBDIVISION OF SECTION 10, TOWNSHIP 45 SOUTH, RANGE 36 EAST, PALM BEACH COUNTY, FLORIDA, AS RECORDED IN PLAT BOOK 1, PAGE 115, PUBLIC RECORDS OF PALM BEACH COUNTY, FLORIDA.

Containing: 840.582 Acres

DESCRIPTION: furnished by McDonald Hopkins LLC,

"All those lands lying and being in Sections 3 and 10, Township 45 South, Range 36 East, Palm Beach County, Florida, less the right-of-way for the Bolles Canal (Levee L-21), and more particularly described as follows:

Lots 1 through 128 of the Okeechobee Fruit Lands Co.'s Subdivision of Section 3, Township 45 South, Range 36 East, according to the Plat thereof, recorded in Plat Book 1, Page 108, Public Records of Palm Beach County, Florida, LESS AND EXCEPT the North 160 feet of Section 3, for the right-of-way of the Bolles Canal, Levee (L-21) recorded in Official Records Book 8, Page 287, Public Records of Palm Beach County, Florida; and

Lots 1 through 128 of the Okeechobee Fruit Lands Co.'s Subdivision of Section 10, Township 45 South, Range 36 East, according to the plat thereof, recorded in Plat Book 1, Public Records of Palm Beach County, Florida."

The boundaries shown on the sketches contained in pages 1 and 2 of this document are based upon a boundary survey executed by this Surveyor, Work Order number 09-3-030, dated April 1, 2009.

The Lot numbers and general configuration of the plats is the same as the recorded plats.

There is no Road dedication to the public on the subject plats.

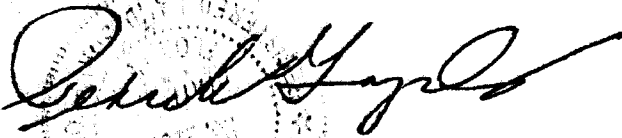
There is only a note reading: "Strip of 10 feet wide reserved along the front of each lot for roadway."

DATUM AND BASIS OF BEARINGS:

Bearings shown on the subject sketches are Grid Bearings of the Florida State Plane Coordinate System, East Zone, on the 1983 North American Datum, 1998 Adjustment.

The South Line of Section 10, Township 45 South, Range 36 East bears South 89°37'45" West and all other bearings are relative thereto.

This document was prepared by Pedro A. Gonzalez, P.S.M. in the office of PAG SURVEYORS, INC., 1016 Southeast 4th Street, Belle Glade, Florida, 33430



PEDRO A. GONZALEZ, P.S.M.
 Florida License No. 2287

SKETCH OF DESCRIPTION FOR: OKEELANTA CORPORATION - PROPOSED VACATING OF THE OKEECHOBEE FRUIT LANDS COMPANY'S SUBDIVISIONS OF SECTIONS 3 & 10, TOWNSHIP 45 SOUTH, RANGE 36 EAST, AS RECORDED IN PLAT BOOK 1, PAGE 108 & PLAT BOOK 1, P.115, RESPECTIVELY			
PALM BEACH COUNTY			FLORIDA
Scale 1"=1000'	PAG SURVEYORS, INC. L.B. 3411	Date 7-29-09	Sheet <u>3</u>
Note Book 45-36	<small>1016 Southeast 4th Street - Phone (561) 986-8815</small> <small>Belle Glade, FL 33430-4330</small>	Work Order No. 09-1-030B	OF <u>3</u>
No. Page			