

Agenda Item is over 50 pages can be reviewed
in the Minutes Department.

Agenda Item #: 3-C-10

**PALM BEACH COUNTY
BOARD OF COUNTY COMMISSIONERS
AGENDA ITEM SUMMARY**

Meeting Date: January 12, 2010 ☒ Consent ☐ Regular
☐ Workshop ☐ Public Hearing
Department:
Submitted By: Engineering & Public Works Department
Submitted For: Roadway Production Division

I. EXECUTIVE BRIEF

Motion and Title: Staff recommends motion to approve: Supplemental Agreement No. 3 to Project Number 2004506 under Agreement R2005-0632 in the amount of \$336,524.46 with American Consulting Engineers of Florida, LLC, for professional services.

SUMMARY: Approval of this Supplemental Agreement will provide the services necessary for the preparation of design plans and construction bid documents for Old Dixie Highway from Park Avenue to Northlake Boulevard.

Districts 1 and 7 (PK)

Background and Justification: On April 5, 2005, the Board of County Commissioners (Board) approved an Agreement R2005-0632 with American Consulting Engineers of Florida, LLC, (ACE) to provide professional services required for preparation of a preliminary design and alignment study for Old Dixie Highway from Park Avenue to Northlake Boulevard and Park Avenue West from 13th Street to Old Dixie Highway, including the intersection of Park Avenue (Project). Palm Beach County now desires ACE to prepare design plans and construction bid documents for Old Dixie Highway from Park Avenue to Northlake Boulevard, as detailed in Exhibit "A" of the attached Supplemental Agreement. The Small Business Enterprise (SBE) goal for the Project is 15%. The SBE participation committed for this supplement by ACE is 9.31% and ACE's SBE participation to date for this Project, including this supplement, is 14.35% overall. The fee, as detailed in Exhibit "A" of the attached Supplemental Agreement, has been negotiated as just and reasonable compensation as follows:

Basic Services (Lump Sum)	\$290,523.42	(Analysis, Design & Construction Plans).
Reimbursable Expenses (Not to Exceed)....	\$ 28,155.28	(Survey, Geotechnical).
Optional Services (Not to Exceed).....	<u>\$ 17,845.76</u>	(SUE Services and Post Design Services).
Total:	<u>\$336,524.46</u>	

After reviewing the attached Supplemental Agreement and finding it in proper order, staff recommends the Board's approval.

Attachments:

1. Location Map
2. Supplemental Agreement with Exhibits and Certificate of Insurance (2)
3. Project Work Schedule

Recommended by: _____

Division Director

Date

Approved By: _____

County Engineer

Date

II. FISCAL IMPACT ANALYSIS

A. Five Year Summary of Fiscal Impact:

Fiscal Years	2010	2011	2012	2013	2014
Capital Expenditures	<u>\$387,014</u>	<u>-0-</u>	<u>-0-</u>	<u>-0-</u>	<u>-0-</u>
Operating Costs	<u>-0-</u>	<u>-0-</u>	<u>-0-</u>	<u>-0-</u>	<u>-0-</u>
External Revenues	<u>-0-</u>	<u>-0-</u>	<u>-0-</u>	<u>-0-</u>	<u>-0-</u>
Program Income (County)	<u>-0-</u>	<u>-0-</u>	<u>-0-</u>	<u>-0-</u>	<u>-0-</u>
In-Kind Match (County)	<u>-0-</u>	<u>-0-</u>	<u>-0-</u>	<u>-0-</u>	<u>-0-</u>
NET FISCAL IMPACT	<u>\$387,014</u>	<u>-0-</u>	<u>-0-</u>	<u>-0-</u>	<u>-0-</u>

ADDITIONAL FTE
POSITIONS (Cumulative) _____

Is Item Included in Current Budget? Yes X No

Budget Account No:

Fund 3501 Dept 361 Unit 1064 Object 6505

B. Recommended Sources of Funds/Summary of Fiscal Impact:

Road Impact Fee Fund - Zone 1
Old Dixie Hwy/Park Ave to Northlake Blvd

Supplement #3 - Basic Services	\$290,523.42
- Reimbursables	\$ 28,155.28
- Optional Services	\$ 17,845.76
Authorization	\$336,524.46
Staff Charges - Roadway Production	\$ 33,660.00
-Traffic	\$ 16,830.00
Fiscal Impact	\$387,014.46

C. Departmental Fiscal Review:

III. REVIEW COMMENTS

A. OFMB Fiscal and/or Contract Dev. and Control Comments:

 12-21-09
OFMB

 12/22/09
Contract Dev. and Control

B. Approved as to Form and Legal Sufficiency:

 12/28/09
Assistant County Attorney

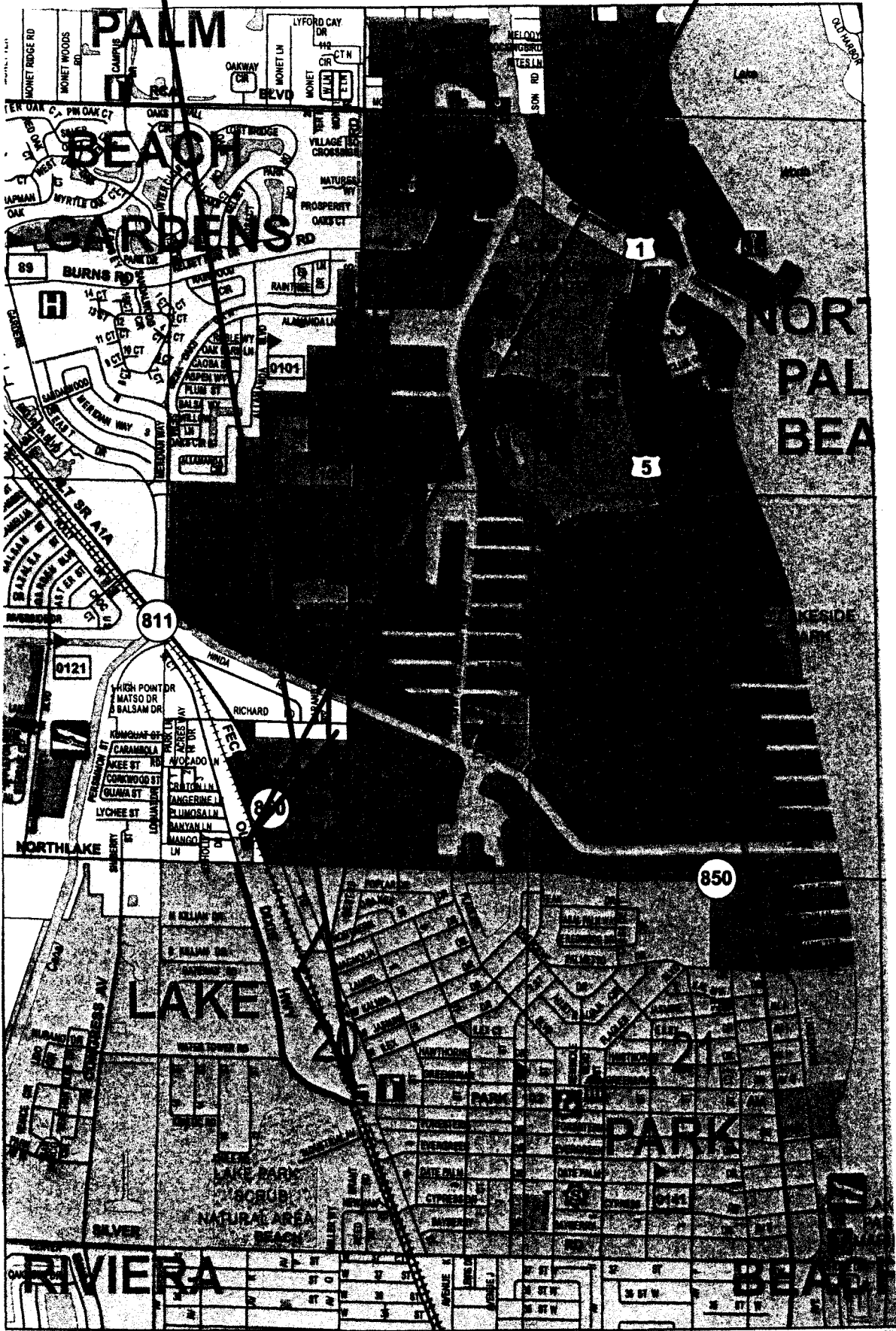
This item complies with current
County policies.

C. Other Department Review:

Department Director

This summary is not to be used as a basis for payment.

OLD DIXIE HIGHWAY
PARK AVENUE TO NORTHLAKE BOULEVARD
PROJECT NO. 2004506



LOCATION MAP

ATTACHMENT 2

**SUPPLEMENTAL AGREEMENT BETWEEN
PALM BEACH COUNTY
AND
AMERICAN CONSULTING ENGINEERS OF FLORIDA, LLC
FOR PROFESSIONAL ENGINEERING SERVICES ON
OLD DIXIE HIGHWAY
PARK AVENUE TO NORTHLAKE BOULEVARD
PROJECT #: 2004506
PALM BEACH COUNTY, FLORIDA**

THIS SUPPLEMENTAL AGREEMENT No. 3, made and entered into this day of _____ 2009 by and between Palm Beach County, hereinafter COUNTY, and, American Consulting Engineers of Florida, LLC, a Florida Limited Liability Company with an address of 2000 Palm Beach Lakes Boulevard, Suite 1000, West Palm Beach, FL 33409, hereinafter CONSULTANT.

WITNESSETH

WHEREAS, the COUNTY and CONSULTANT entered into a Project Agreement dated April 5, 2005 (R2005-0632), to provide professional engineering services for the design of Old Dixie Highway from Park Avenue to Northlake Boulevard, Palm Beach County, Florida (hereinafter PROJECT); and.

WHEREAS, the COUNTY now desires for the CONSULTANT to provide and perform engineering analysis, design and construction plans preparation and improvements to the corridor for the PROJECT; and

WHEREAS, the following fee has been negotiated as just and reasonable compensation for these professional services to be performed by the CONSULTANT:

**RE: OLD DIXIE HIGHWAY FROM PARK AVENUE TO NORTHLAKE BOULEVARD
Project No.2004506**

Basic Services in a lump sum fee of **\$290,523.42;**

Reimbursable Services (Not to Exceed) \$28,155.28;

Optional Services (Not to Exceed) \$17,845.76;

Totaling \$336,524.46

NOW, THEREFORE, THIS INDENTURE WITNESSETH: That for and in consideration of the mutual benefits to flow from each to the other, the parties hereto agree as follows:

1. The **CONSULTANT** agrees to provide professional services as described in Exhibit "A" of the Agreement known as "SCOPE OF WORK & FEE".
2. The **CONSULTANT** agrees to "CERTIFICATION" statements as described in Exhibit "B" of the Agreement.
3. The **CONSULTANT** agrees to Small Business Enterprise (SBE) Participation, described in Exhibit "C" of the Agreement.
4. The **CONSULTANT** has provided sub-consultants Letter of Intent to perform as an SBE as described in Exhibit "D" of the Authorization.
5. The **COUNTY** agrees to pay the **CONSULTANT** a fee of Three Hundred Thirty-Six Thousand Five Hundred Twenty-Four Dollars and Forty-Six Cents (\$336,524.46).
6. The **CONSULTANT** agrees to indemnify, defend and hold harmless the **COUNTY** against all claims that may arise as a result of negligence, wrongdoing, misconduct or want of care by the **CONSULTANT**.

Except as hereby amended, changed or modified, all other terms and conditions of the original Agreement dated **April 5, 2005 (R2005-0632)**, and;

Supplements and Amendments thereto, shall remain in full force and effect.

**RE: OLD DIXIE HIGHWAY FROM PARK AVENUE TO NORTHLAKE BOULEVARD
Project No.2004506**

IN WITNESS WHEREOF, the parties hereto have made and executed this Authorization as of the day and year first above written.

OWNER:

**Palm Beach County, Florida, a
Political Subdivision of the
State of Florida**

CONSULTANT:

**American Consulting Engineers of Florida, LLC
a Florida Limited Liability Company**

BOARD OF COUNTY COMMISSIONERS

BY: _____
**John F. Koons, Chairman
Burt Aaronson, Chair**

BY: Ryan R. Forrestel
**Ryan R. Forrestel, PE
Principal / Managing Member**

ATTEST:
**Sharon R. Bock, Clerk & Comptroller
Circuit Court**

CORPORATE SEAL

BY: _____
Deputy Clerk

WITNESS:

BY: Richard A. Hunter

SEAL

RICHARD A. HUNTER
(Printed Name)

**APPROVED AS TO TERMS
AND CONDITIONS:**

BY: Donna A. Fennell

BY: Paul C. McGee

**APPROVED AS TO FORM & LEGAL
SUFFICIENCY:**

Joe C. McGee
(Printed Name)

County Attorney

SCOPE OF SERVICES

Scope + Fee OK
8/24
10-23-09

Scope of Services
Supplemental Agreement No 3
Old Dixie Highway From South of Park Ave to South of Northlake Blvd
Palm Beach County Project No. 2004506
Palm Beach County

TABLE OF CONTENTS

1.00	PROJECT OBJECTIVE AND DESCRIPTION
2.00	PROJECT DESIGN LIMITS
3.00	QUALIFICATIONS DURING TERM OF SERVICES
4.00	BASIC SERVICES - SCOPE AND RESPONSIBILITY REQUIREMENTS
4.01	Project Schedule
4.02	Design, Construction Plans and Bidding Documents
4.03	Plans and Design Submittals
4.04	Design Survey
4.05	Subsurface Investigation
4.06	Drainage Design
4.07	Utility Coordination
4.08	Environmental Services
4.09	Coordination of Design Within Project Limits
4.10	Signing and Pavement Markings
4.11	Construction Cost Estimates
4.12	Specifications
5.00	PLANS PREPARATION, ENDORSEMENT AND OWNERSHIP
6.00	COST PROPOSAL
7.00	SERVICES TO BE PROVIDED BY THE COUNTY
8.00	PLANS REVIEW CHECK LIST

SCOPE OF SERVICES

Scope of Services
Professional Services Agreement
Old Dixie Highway From South of Park Ave to South of Northlake Blvd
Palm Beach County

1.00 PROJECT OBJECTIVE AND DESCRIPTION

1.01 Services required of the CONSULTANT involve furnishing, providing, and performing engineering analysis, design and construction plan preparation as per subarticle 4.02.4. Planned improvements to the corridor will include the following:

1.01.1 Widen the existing section to include three (3) 12 foot lanes, shoulders, type F curb & gutter and concrete sidewalk from south of Park Avenue to south of Northlake Boulevard.

1.02 This Project shall be designed by the CONSULTANT upon receipt of a written Notice to Proceed (NTP) with services to be provided as more particularly described herein.

2.00 PROJECT DESIGN LIMITS

CONSULTANT shall provide professional consulting services to the COUNTY, consisting of design and permitting for approximately 0.9 miles of Old Dixie Hwy from south of Park Avenue to south of Northlake Blvd hereinafter known as the "PROJECT".

3.00 QUALIFICATIONS DURING TERM OF SERVICES

The CONSULTANT shall provide all engineering services for the PROJECT, in accord with and of a quality, meeting the minimum design standards established by Palm Beach County.

4.00 BASIC SERVICES - SCOPE AND RESPONSIBILITY REQUIREMENTS

The CONSULTANT will provide the following customary basic services for the PROJECT;

4.01 Project Schedule:

The CONSULTANT shall prepare, furnish and maintain a bar chart schedule, for the Project design services. In preparing the bar chart schedule, the scheduling of all design activities shall be the responsibility of the CONSULTANT. The schedule shall be submitted to the COUNTY within ten (10) working days of receiving NTP for review.

4.02 Design, Construction Plans and Bidding Documents:

DESIGN ANALYSIS- The CONSULTANT will provide the following services and perform the following tasks:

4.02.1 Subject plans shall include design and construction requirements for roadway improvements; sidewalk improvements; drainage; and other incidental design items within the PROJECT limits. Maintenance of traffic plans/sequences of construction plans shall NOT be provided. The above designs and plans shall be prepared in accordance with current standards adopted by the American Association of State

SCOPE OF SERVICES

Highway and Transportation Officials, the Florida Department of Transportation, the Palm Beach County Engineering Department, as listed hereinafter or as will be made known to the CONSULTANT during performance of all services for the PROJECT.

- 4.02.2 Typical Sections- Consultant will prepare one (1) three (3) lane typical section for Old Dixie Highway.
- 4.02.3 Pavement Design - Will be provided by PBC.
- 4.02.4 Horizontal/Vertical Master Design Files – The CONSULTANT will use the existing horizontal alignment with minor adjustments for the PROJECT corridor. The CONSULTANT will develop a vertical alignment for the PROJECT corridor.
- 4.02.5 Cross Section Design - Consultant will prepare design cross sections at 100 ft intervals for the 65%, 96%, 100% and Final submittals.
- 4.02.6 Access Management –N/A.
- 4.02.7 Design Report – Consultant shall provide a design report.
- 4.02.8 Computation Book & Quantities - Consultant will prepare final quantities for the PROJECT.
- 4.02.9 Summary of Pay Items - Included with the 65%, 96%, 100% and Final Phase submittals.
- 4.02.10 Technical / Special Provisions – N/A.
- 4.02.11 Field Reviews – Two (2) reviews two (2) people each.
- 4.02.12 Technical Progress Meetings – Three (3) meetings two (2) people each.
- 4.02.13 Public Involvement – No public information meetings will be included with this project.
- 4.02.14 Specific design and construction references, aids and standards shall include, but will not necessarily be limited to the materials listed below. These design reference materials shall be the latest edition materials in effect at the time of performance of the Services Agreement for the project. The controlling roadway design standards will be those presented in the Florida Green Book.
 - (a) Manual of Uniform Minimum Standards for Design, Construction, and Maintenance for Streets and Highways, latest edition (Florida Green Book)
 - (b) FDOT Drainage Manual
 - (c) FDOT Basis of Estimates and Computations Manual
 - (d) FDOT Standard Specifications for Road and Bridge Construction
 - (e) Manual on Uniform Traffic Control Devices
 - (f) Current FDOT Roadway Design Standards Indexes
 - (g) Utility Manual (Volume I-Utilities); and, AWWA Standards
 - (h) AASHTO Policy on Design of Urban Highways and Arterial Streets

SCOPE OF SERVICES

- (i) Soils and Foundations (procedures)
- (j) Palm Beach County Standards
- (k) SFWMD Standards

4.02.15 Design will include an plateaued intersection at Park Avenue.

4.03 Plans and Design Submittals:

4.03.1 Review Plans:

All plans submitted to the COUNTY for the purpose of review will be 11" x 17" in size with raster image background. During the design stage the CONSULTANT shall submit the following:

- (a) A minimum of three (3) sets of progress plans for review by the COUNTY at 35%, 65%, 96%, 100% and Final Phase submittals.
- (b) Two (2) sets of plans for each utility company along the corridor at Master Plan and one (1) set for each utility at the Pre-65%, Pre-96% & Pre-100% submittals. There are 12 existing utility owners identified on the Sunshine Design ticket for these project limits.

4.03.2 Design Computation Documents:

All of the following record documents shall be submitted to the COUNTY by the CONSULTANT, or Sub-Consultant as applicable, at the time of final acceptance or otherwise as noted elsewhere in this scope of services document, neatly bound in an 8 1/2" x 11" format or as to the satisfaction of the COUNTY. All review comments made on design documents or reports submitted as listed below shall be responded to and incorporated into the documents as applicable and such documents or reports shall be resubmitted to COUNTY at the following design interval submittal date as requested. All plans, specifications, and/or reports prepared or obtained under this Agreement shall be considered works made for hire and shall become the property of the COUNTY and shall be made available, upon request, to the COUNTY at any time. Submittals of design computations shall include, but not necessarily be limited to the following:

- (a) Two (2) copies of a Technical Memorandum that should list all design criteria that CONSULTANT will be utilizing during plans development of the Project two weeks after NTP date.
- (b) Two (2) copies, signed and sealed, of survey field notes at the completion of the PROJECT.
- (c) Two (2) copies of design computations that shall include, but not necessarily be limited to, horizontal and vertical alignment design at the completion of the 65% Phase Submittal.
- (d) Project correspondence required to document design decisions reached during development of the plans at each design review interval as applicable.

SCOPE OF SERVICES

- 4.04 Design Survey:
The Design Survey and utility subsurface investigation for the PROJECT as described in article 2.00 is being preformed by Betsy Lindsay Inc.
 - 4.04.1 See attached scope of work from Betsy Lindsay Inc.
- 4.05 Subsurface Investigation
The Subsurface Investigation (Geotech) for the PROJECT as described in article 2.00 is being preformed by Tierra South Florida, Inc.
 - 4.05.1 See attached scope of work from Tierra South Florida, Inc.
- 4.06 Drainage Design
 - Drainage Component of Roadway Analysis & Plans
 - 4.06.1 Drainage maps - The CONSULTANT will produce drainage maps at a scale of 1"=200' for 11x17 size sheets.
 - 4.06.2 Drainage Detail Sheets - The CONSULTANT will detail control structures and miscellaneous drainage features requiring additional detail.
 - 4.06.3 Base Clearance and Design Groundwater Elevations - The CONSULTANT will determine the base clearance and groundwater elevations to be utilized in evaluating roadway and detention area construction considerations.
 - 4.06.4 Outfalls - The CONSULTANT will analyze the outfalls for variable tailwater conditions in the design of the drainage for the roadway project.
 - 4.06.5 Stormwater Management System Facilities - The CONSULTANT will design the stormwater management system to meet applicable state, local, and federal requirements for water quality, discharge attenuation, and flooding considerations. The analysis of the Stormwater Management facility will be performed utilizing state of the art drainage design software (ADICPR modeling).
 - 4.06.6 Storm Drains - The CONSULTANT will design the storm drain systems utilizing state of the art software (ASAD). Standard criteria for design of roadway drainage systems shall be applied.
 - 4.06.7 Drainage Report - The CONSULTANT will provide detailed documentation of the drainage design both for permitting purposes and for the project record.
 - 4.06.8 Permits- The CONSULTANT shall coordinate permitting requirements during preliminary roadway design tasks with SFWMD, Town of Lake Park and USACOE. The CONSULTANT shall hold coordination meetings with the COUNTY and SFWMD for this task. A maximum of one (1) agency meeting is included in this task.
 - 4.06.9 Field Reviews - The CONSULTANT has included two (2) field reviews two (2) people each.

SCOPE OF SERVICES

4.07 Utility Coordination:

- 4.07.1 The CONSULTANT shall provide PBC two (2) copies of proposed improvements for each identified utility owner along the corridor to identify their existing facilities. The CONSULTANT will coordinate all Project designs with those utility owners that may have a direct or indirect interest in this Project. These coordination efforts by the CONSULTANT shall consist of attending meetings, exchange/submission of proposed construction plans to respective utility, design coordination to effectuate cost-effective project improvements resulting from resolution of conflicts with existing and planned utility facilities.

4.08 Environmental Services:

- 4.08.1 The CONSULTANT will conduct an environmental survey of the right-of-way corridor and determine, delineate and evaluate any visual environmental issues.
- 4.08.2 CONSULTANT will review each off-site parcel for wetlands, uplands, and endangered species concerns.
- 4.08.3 See attached scope of work from Tierra South Florida, Inc. for Phase I environmental screening for two sites.

4.09 Coordination of Design Within PROJECT Limits:

- 4.09.1 Design services specified herein shall include transitions to match existing sidewalk, curb, pavement and driveways as required.
- 4.09.2 Coordination of designs with adjacent land developers and contractors that may be performing work or improvements within or adjacent to the project limits will be the CONSULTANT's responsibility. COUNTY will be copied on all meeting and/or correspondence between CONSULTANT and such developers or contractors.
- 4.09.3 To the extent necessary for CONSULTANT'S performance of services and upon request from CONSULTANT, the COUNTY will provide all available record data, information, plans, right-of-way permits, etc. relating to adjacent land developments (existing and proposed).

4.10 Signing and Pavement Markings:

The project design services shall include the design and plan preparation for customary ground-mounted signing and pavement markings for the PROJECT as described in article 2.00.

4.11 Construction Cost Estimates:

CONSULTANT will prepare and submit a construction cost estimate for the PROJECT with the 96%, 100% and Final Phase submittals only.

4.12 Specifications:

The CONSULTANT shall prepare any technical specifications needed for the project using the COUNTY's standard technical specifications. The COUNTY will provide

SCOPE OF SERVICES

an electronic file (Microsoft Word TM Format) of all the COUNTY's standard technical specifications. Any deviations required by the design from the COUNTY's standard technical specifications will be prepared by the CONSULTANT.

5.00 PLANS PREPARATION, ENDORSEMENT AND OWNERSHIP

- 5.01 All sheets of the construction drawings shall have a title block across the entire bottom or side of the sheet. The standard Project title block and standard sheets shall be furnished by the COUNTY.
- 5.02 All final plans, documents, reports, studies and other data prepared by the CONSULTANT and/or its subconsultants will bear the signature and seal of the CONSULTANT's record engineer or the applicable design engineer who shall be duly registered in the appropriate professional category.

6.00 COST PROPOSAL:

- 6.01 The CONSULTANT's cost proposal herein does not include costs for permit application fees to respective environmental or COUNTY agencies. The cost for permitting, if paid by CONSULTANT, shall be reimbursable by the COUNTY in full upon submittal of fees justification.

7.00 SERVICES TO BE PROVIDED BY THE COUNTY:

The following tasks, activities and or items will be provided by the COUNTY

- 7.01 Copies of proposed development plans adjacent to the project limits.
- 7.02 Provide raster images for the design.

8.00 PLANS REVIEW CHECK LIST:

The following represents the minimum amount of information that shall be shown for each design interval.

Minimum submittal requirements herein listed for the proposed submittals on this project are not all-inclusive; see Article 4.03 for additional service requirements.

SCOPE OF SERVICES

CONSULTING ENGINEERING SERVICES AGREEMENT SCOPE OF BASIC PROFESSIONAL SERVICES

Old Dixie Hwy from South of Park Ave to South of Northlake Blvd

Phase I (35% Plans Submittal)

Purpose/Description: To review the CONSULTANT's geometric layout, survey data, basic geometrics, right-of-way recommendations and other preliminary design materials. Provides the technical basis for further plan development.

Submission of review plans and other data: A minimum of three (3) half size sets (11"x 17") of bound preliminary plans and all design data will be submitted to the COUNTY.

Minimum submittal requirements (shown thus X) (Typical, including the following).

- X 1. Title Sheet.
- X 2. Approved Typical Section.
- X 3. Preliminary Drainage Map.
- X 4. Preliminary Geometrics.
- X 5. Benchmarks, Reference Points and Sectional Corners.
- X 6. Right-of-Way Lines, Baseline of Survey and Centerline of Construction
- X 7. Preliminary Drainage Design.
- X 8. Preliminary Profile Grade Lines (Existing and Proposed).
- X 9. Existing Drainage.
- X 10. Back of Sidewalk Profiles.
- X 11. Existing Ditch/Detention Area Plan and Profile.
- X 12. Existing Intersection Profiles.
- X 13. Existing Cross Sections.
- X 14. Existing Ditch Cross Sections.
- 15. Preliminary Right-of-Way Procurement Map (if required) (1"=40').
- 16. Bridge Construction Plans (See Appendix E).
- X 17. List of Required Permits.

SCOPE OF SERVICES

CONSULTING ENGINEERING SERVICES AGREEMENT SCOPE OF BASIC PROFESSIONAL SERVICES

Old Dixie Hwy from South of Park Ave to South of Northlake Blvd

Phase II (65% Plan Submittal)

Purpose/Description: To review the CONSULTANT's grades, drainage mapping, typical sections, intersection design, drainage structures, soil survey, and similar design elements. Designs at this stage are subject to minor revisions. Substantive changes to the type, size, and location of major features will be considered extra work.

Submission of review plans and other data: A minimum of three (3) half size sets (11"x 17") of bound preliminary plans. Two (2) copies of reports and design data will be submitted to the COUNTY.

Minimum submittal requirements (shown thus X) (Typical, including the following).

- X 1. Phase I comments Addressed.
- X 2. Summary of Quantities (items only).
- X 3. Drainage Design Computations.
- X 4. Drainage Maps.
- X 5. Proposed Drainage in Plan.
- X 6. Final Geometrics.
- X 7. Geometric Computation Book.
- X 8. Plateaued Intersection Sheets.
- X 9. Final Profiles.
- X 10. Limits of Construction.
- X 11. Proposed Ditch/Detention Area Plan and Profile.
- X 12. Intersection Profile Sheets.
- X 13. Proposed Cross Sections.
- X 14. Proposed Ditch Cross Sections.
- X 15. Existing Utilities.
- X 16. Driveway Profile Sheets (existing and proposed).
- X 17. Special Detail Sheets.
- X 18. Bridge Construction Plans (See Appendix E).
- X 19. Preliminary Signing and Pavement Marking Plans.
- 20. Preliminary Signal Plans (if required).
- 21. Proposed Right-of-Way Procurement Map (if required).

The items listed above are not all-inclusive service responsibilities, but rather are primary categories. See preceding pages for all contract services by consultant.

SCOPE OF SERVICES

CONSULTING ENGINEERING SERVICES AGREEMENT SCOPE OF BASIC PROFESSIONAL SERVICES

Old Dixie Hwy from South of Park Ave to South of Northlake Blvd

Phase III 96% Plan Submittal

Purpose/Description: To review the CONSULTANT's final grades, drainage mapping, typical sections, intersection design, drainage structures, soil survey, and similar design elements. Final designs at this stage are subject to minor revisions. Substantive changes to the type, size, and location of major features will be considered extra work. Initial review of the specifications and quantities.

Submission of review plans and other data: Three(3) half size sets (11"x 17") of bound construction drawings to COUNTY. Two (2) copies of reports and design data to COUNTY.

Minimum submittal requirements (shown thus X) (Typical, including the following).

- X 1. Phase II Comments Addressed.
- X 2. Special Provisions for Construction Specifications.
- X 3. Summary of Quantities Sheet.
- X 4. Utilities on Plan and Profile.
- X 5. Drainage on Drainage Map and Plan and Profile Sheets.
- X 6. Ditch/Detention Area Plan and Profile.
- X 7. Traffic Control Plans (if required).
- X 8. Signing and Pavement Marking Plans.
- X 9. Signal Plans (if required).
- X 10. Drainage Structure Sheets.
- X 11. Special Detail Sheets.
- X 12. Cross Sections.
- X 13. Ditch Cross Sections.
- X 14. Quantity Computation Book.
- X 15. Engineers Cost Estimate.
- X 16. Bridge Construction Plans (See Appendix E).

SCOPE OF SERVICES

CONSULTING ENGINEERING SERVICES AGREEMENT SCOPE OF BASIC PROFESSIONAL SERVICES

Old Dixie Hwy from South of Park Ave to South of Northlake Blvd

Phase IV (100% Plan Submittal)

Purpose/Description: To review the CONSULTANT's final plans, evaluations, recommendations, quantities, contract documents, and the like, for content, completeness, and form and sufficiency for bidding purposes. Purpose of review is to correct typographic errors. To determine outstanding contract obligations by CONSULTANT and timetable for contract closeout.

Submission of review plans and other data: Three(3) half size sets (11"x 17") of bound construction drawings to COUNTY. Two (2) copies of reports and design data to COUNTY.

Minimum submittal requirements (shown thus X) (Typical, including the following):

- X 1. Phase II Comments Addressed.
- X 2. All Permits Received.
- X 3. All Plans (completed)

SCOPE OF SERVICES

CONSULTING ENGINEERING SERVICES AGREEMENT

Responsibility Chart-Construction Plans Preparation

Old Dixie Hwy from South of Park Ave to South of Northlake Blvd

ITEM	DESCRIPTION	BY CONSULTANT	BY COUNTY	REMARKS
1	Aerial Survey	N/A	N/A	Not in Contract
2	Aerial Photography	No	Yes	
3	Cost Estimates--Roadway	Yes	N/A	Basic Services
4	Engineering Field Survey (Design Survey)	Yes	N/A	Reimbursable
5	Soils Investigations (Soils Testing and Analysis)	Yes	N/A	Reimbursable
6	Lighting Plans	No	N/A	Not in Contract
7	Maintenance of Traffic Plans	No	N/A	County Contractor
8	Subsurface Investigation	Yes	N/A	Reimbursable
9	Permit Sketches--Environmental (Roadway)	N/A	N/A	Not in Contract
10	Permit Applications--ERP/Drainage	Yes	N/A	Basic Services
11	Quantity Computation Booklet	Yes	N/A	Basic Services
12	Right-of-Way Field Survey	Yes	N/A	Reimbursable
13	Right-of-Way and/or Drainage Easements--Legal Descriptions; Certified Sketches	No	N/A	Not in Contract
14	Right-of-Way Documents (Easement and Right-of-Way Agreements)	No	N/A	Not in Contract
15	Parcel Acquisition Maps	No	N/A	Not in Contract
16	Title Search/Abstract	No	N/A	Not in Contract
17	Signalization Plans	Yes	N/A	Optional Services
18	Signing/Striping Plans	Yes	N/A	Basic Services
19	Landscaping Designs and Plans	No	N/A	Not in Contract
20	Roadway Plans	Yes	N/A	Basic Services
21	Drainage Design	Yes	N/A	Basic Services
22	Utility Design and Adjustment Plans	No	N/A	Not in Contract
23	Utility Coordination	Yes	N/A	Basic Services
24	Structural Design	No	N/A	Not in Contract
25	Services During Construction	Yes	N/A	Optional Services

The items listed above are not all-inclusive service responsibilities, but rather are primary categories. See preceding pages for all contract services by consultant.

ESTIMATE OF WORK EFFORT AND COST - PRIME CONSULTANT

Name of Project: Old Dixie Hwy (South of Park Rd to South of Northlake Blvd)
County: Santa Fe
FPM: 2004-006
Supplemental Agreement No. 3
Consultant Name: American Consulting Engineers of Florida
Consultant No.: 504953
Date: 11/11/2009
Estimator: CNO

Staff Classification	Total Staff Hours From	Project Manager	Sr Engineer	Technician	Project Engineer	Staff Classification 1	Staff Classification 2	Staff Classification 3	Staff Classification 4	Staff Classification 5	Staff Classification 6	Staff Classification 7	Staff Classification 8	Staff Classification 9	Staff Classification 10	Staff Classification 11	Staff Classification 12	By	Salary Cost By Activity	Average Rate Per Task
3. Project General Tasks	80	80	20	0	0	0	0	0	0	0	0	0	0	0	0	0	0	80	\$3,920	\$49.00
4. Roadway Analysis	463	68	227	45	113	0	0	0	0	0	0	0	0	0	0	0	0	463	\$18,942	\$41.02
5. Roadway Plans	858	128	398	128	215	0	0	0	0	0	0	0	0	0	0	0	0	858	\$36,710	\$42.79
6. Drainage Analysis	369	55	240	37	37	0	0	0	0	0	0	0	0	0	0	0	0	369	\$16,806	\$45.55
7. Utilities	64	13	22	26	3	0	0	0	0	0	0	0	0	0	0	0	0	64	\$2,461	\$38.76
8. Environmental Permits	180	36	63	45	36	0	0	0	0	0	0	0	0	0	0	0	0	180	\$7,366	\$40.92
9. Structures - Misc. Tasks, Dugh, Non-Tec	0	0	0	0	0	0	0	0	0	0	0	0	0	0	0	0	0	0	\$0	\$0.00
10. Structures - BOR	0	0	0	0	0	0	0	0	0	0	0	0	0	0	0	0	0	0	\$0	\$0.00
11. Structures - Temporary Bridge	0	0	0	0	0	0	0	0	0	0	0	0	0	0	0	0	0	0	\$0	\$0.00
12. Structures - Short Span Concrete	0	0	0	0	0	0	0	0	0	0	0	0	0	0	0	0	0	0	\$0	\$0.00
13. Structures - Medium Span Concrete	0	0	0	0	0	0	0	0	0	0	0	0	0	0	0	0	0	0	\$0	\$0.00
14. Structures - Structural Steel	0	0	0	0	0	0	0	0	0	0	0	0	0	0	0	0	0	0	\$0	\$0.00
15. Structures - Segmental Concrete	0	0	0	0	0	0	0	0	0	0	0	0	0	0	0	0	0	0	\$0	\$0.00
16. Structures - Movable Span	0	0	0	0	0	0	0	0	0	0	0	0	0	0	0	0	0	0	\$0	\$0.00
17. Structures - Retaining Walls	0	0	0	0	0	0	0	0	0	0	0	0	0	0	0	0	0	0	\$0	\$0.00
18. Structures - Miscellaneous	0	0	0	0	0	0	0	0	0	0	0	0	0	0	0	0	0	0	\$0	\$0.00
19. Signing & Marking Analysis	167	26	56	67	17	0	0	0	0	0	0	0	0	0	0	0	0	167	\$6,398	\$38.31
20. Signing & Marking Plans	68	13	22	40	13	0	0	0	0	0	0	0	0	0	0	0	0	68	\$3,217	\$47.35
21. Signalization Analysis	0	0	0	0	0	0	0	0	0	0	0	0	0	0	0	0	0	0	\$0	\$0.00
22. Signalization Plans	0	0	0	0	0	0	0	0	0	0	0	0	0	0	0	0	0	0	\$0	\$0.00
23. Lighting Analysis	0	0	0	0	0	0	0	0	0	0	0	0	0	0	0	0	0	0	\$0	\$0.00
24. Lighting Plans	0	0	0	0	0	0	0	0	0	0	0	0	0	0	0	0	0	0	\$0	\$0.00
25. Landscape Architecture Analysis	0	0	0	0	0	0	0	0	0	0	0	0	0	0	0	0	0	0	\$0	\$0.00
26. Landscape Architecture Plans	0	0	0	0	0	0	0	0	0	0	0	0	0	0	0	0	0	0	\$0	\$0.00
27. Survey (Field & Office Support)	0	0	0	0	0	0	0	0	0	0	0	0	0	0	0	0	0	0	\$0	\$0.00
28. Photogrammetry	0	0	0	0	0	0	0	0	0	0	0	0	0	0	0	0	0	0	\$0	\$0.00
29. Mapping	0	0	0	0	0	0	0	0	0	0	0	0	0	0	0	0	0	0	\$0	\$0.00
30. Geotechnical	0	0	0	0	0	0	0	0	0	0	0	0	0	0	0	0	0	0	\$0	\$0.00
31. Architecture Development	0	0	0	0	0	0	0	0	0	0	0	0	0	0	0	0	0	0	\$0	\$0.00
32. Noise Vibe Analysis	0	0	0	0	0	0	0	0	0	0	0	0	0	0	0	0	0	0	\$0	\$0.00
Total Staff Hours	2,259	398	1,036	389	434	0	0	0	0	0	0	0	0	0	0	0	0	2,259	\$98,841.40	\$43.87
Total Staff Cost		\$19,572.00	\$50,862.00	\$9,725.00	\$16,752.40	\$0.00	\$0.00	\$0.00	\$0.00	\$0.00	\$0.00	\$0.00	\$0.00	\$0.00	\$0.00	\$0.00	\$0.00		\$98,841.40	\$43.87

Survey Field Days by Subconsultant
4 - Person Crew

SALARY RELATED COSTS:
OVERHEAD: 168%
OPERATING MARGIN: 11.84%
FCCM (Facilities Capital Cost Money): 0.00%
Survey Field - 4 by Prime
TOTAL BASIC SERVICES: 4-men crew days @ \$ / day

Notes:
1. This sheet to be used by Prime Consultant to calculate the Grand Total fee.
2. Manually enter fee from each subconsultant. Unused subconsultant rows may be hidden.

REIMBURSABLE:
American
Betsy Lindsay, INC (Basic Services)
Terra South Florida.
TOTAL REIMBURSABLE SERVICES:
Optional Services:
Betsy Lindsay, Inc (SUE Services)
Post Design Services (20hrs PM & 20hrs Sr Eng Time)
TOTAL OPTIONAL SERVICES:
GRAND TOTAL ESTIMATED FEE:

2.999% multiple

Project Activity 3: General Tasks

Estimator: CNO

Form Revised 3/28/05

Old Dixie Hwy (South of Park Rd to South of Northlake Blvd)

2004506

3.1	Public Involvement	LS	1	0	0	N/A
3.2	Joint Project Agreements	EA	0	0	0	N/A
3.3	Specifications Package Preparation	LS	1	0	0	N/A PBC to prepare Specs
3.4	Contract Maintenance	LS	1	0	0	N/A
3.5	Value Engineering (Multi-discipline Team) Review	LS	1	0	0	N/A
3.6	Prime Consultant Project Manager Meetings	LS	1	80	80	
3.7	Other Project General	LS	1	0	0	

Project Activity 3: General Tasks

3.6 - List of Project Manager Meetings

Comments - See note 3 below

Roadway Analysis	EA	4	4	16
Drainage	EA	4	4	16
Utilities	EA	2	4	8
Environmental	EA	2	4	8
Structures	EA	0	0	0
Signing & Marking	EA	1	4	4
Signalization	EA	0	0	0
Lighting	EA	0	0	0
Landscape Architecture	EA	0	0	0
Survey	EA	0	0	0
Photogrammetry	EA	0	0	0
ROW & Mapping	EA	0	0	0
Geotechnical	EA	0	0	0
Architecture	EA	0	0	0
Noise Walls	EA	0	0	0
Progress Meetings	EA	3	4	12
Field Reviews	EA	2	8	16
Total Project Manager Meetings		18		80

Notes:

1. The number of project manager meetings should be the same as, or less than, the number of technical meetings listed in each discipline.
2. Do not double count agency meetings between permitting agencies.
3. Project manager meetings are calculated in each discipline sheet and brought forward to column D except for Photogrammetry.

Project Activity 4: Roadway Analysis

Estimator: CNO
Form Revised 3/28/05

Old Dixie Hwy (South of Park Rd to South of Northlake Blvd)
2004506

4.1	Typical Section Package	LS	1	10	10	1 typical
4.2	Pavement Design Package	LS	1	0	0	N/A to be provided by County
4.3	Access Management	LS	1	0	0	N/A 2 lane undivided roadway
4.4	Horizontal /Vertical Master Design Files	LS	1	125	125	
4.5	Cross Section Design Files	LS	1	103	103	120 hrs per mile Cross Sections every 100 feet.
4.6	Traffic Control Analysis	LS	1	0	0	N/A
4.7	Master TCP Design Files	LS	1	0	0	N/A
4.8	Design Variations and Exceptions	LS	1	0	0	N/A
4.9	Design Report	LS	1	40	40	New Design report for 3 lane section.
4.10	Computation Book & Quantities	LS	1	110	110	
4.11	Cost Estimate	LS	1	24	24	
4.12	Technical Special Provisions	LS	1	0	0	N/A
4.13	Other Roadway Analysis	LS	1	0	0	N/A
Roadway Analysis Technical Subtotal					412	
4.14	Field Reviews	LS	1	8	8	2 field reviews, two people 4 hrs per
4.15	Technical Meetings	LS	1	33	33	Meetings are listed below
4.16	Quality Assurance/Quality Control	LS	%	0%	0	
4.17	Independent Peer Review	LS	%	0%	0	
4.18	Supervision	LS	%	0%	0	
Roadway Analysis Nontechnical Subtotal					41	
4.19	Coordination	LS	%	0%	0	

Project Activity 4: Roadway Analysis

Technical Meetings

Typical Section	EA	0	0	0
Pavement	EA	0	0	0
Access management	EA	0	0	0
15% line and grade	EA	0	0	0
Driveways	EA	0	0	0
Local Governments (cities, counties, MPO)	EA	0	0	0
Work zone traffic control	EA	0	0	0
30/60/90/100% comment review meetings	EA	3	3	9
Other meetings	EA	1	4	4
Subtotal technical meetings				13
Progress Meetings (if required)	EA	3	4	12
Phase Review Meetings	EA	2	4	8
Total Meetings				33

Carries to 4.15

Project Activity 5: Roadway Plans

Estimator: CNO

Old Dixie Hwy (South of Park Rd to South of Northlake Blvd)

2004506

5.1	Key Sheet		Sheet	1	8	1	8	Update Key Sheet
5.2	Summary of Pay Items-including Quantity Input		Sheet	1	20	1	20	
5.3	Drainage Map	200	Sheet	3	30	3	90	
5.4	Interchange Drainage Map		Sheet	0	0	0	0	N/A
5.5	Typical Section Sheets		Sheet	1	14	1	14	
5.6	General Notes/Pay Item notes		Sheet	1	14	1	14	
5.7	Summary of Quantities		Sheet	1	24	1	24	
5.8	Box Culvert Data Sheet		Sheet	0	0	0	0	N/A
5.9	Bridge Hydraulics Recommendation Sheets		Sheet	0	0	0	0	N/A
5.10	Summary of Drainage Structures		Sheet	0	0	0	0	Not included on PBC projects
5.11	Optional Pipe/ Culvert Material		Sheet	0	0	0	0	N/A
5.12	Project Layout		Sheet	0	0	0	0	N/A
5.13	Plan/Profile Sheet	40	Sheet	11	8	11	88	
5.14	Profile Sheet		Sheet	0	0	0	0	N/A
5.15	Plan Sheet		Sheet	0	0	0	0	N/A
5.16	Special Profile		Sheet	0	0	0	0	N/A
5.17	Back of Sidewalk Profile Sheet	40	Sheet	0	0	0	0	N/A
5.18	Interchange Layout Sheet		Sheet	0	0	0	0	N/A
5.19	Ramp Terminal Details (Plan View)		Sheet	0	0	0	0	N/A
5.20	Intersection Layout Details		Sheet	1	24	1	24	
5.21	Miscellaneous Detail Sheets		Sheet	1	24	1	24	
5.22	Drainage Structure Sheet (per Structure)		EA	61	3	12	183	
5.23	Miscellaneous Drainage Detail Sheets		Sheet	2	25	2	50	Control Structure Details

Project Activity 5: Roadway Plans

5.24	Lateral Ditch Plan/Profile		Sheet	0	0	0	0	N/A
5.25	Lateral Ditch Cross sections		EA	0	0		0	N/A
5.26	Retention/Detention Ponds Detail Sheet		Sheet	5	24	5	120	2 sheets for 1 pond & 3 sheets for odd shaped pond on south
5.27	Retention Pond Cross Sections		EA	0	0		0	N/A
5.28	Cross-section Pattern Sheet		Sheet	0	0	0	0	N/A
5.29	Roadway Soil Survey Sheet		Sheet	1	1	1	1	
5.30	Cross Sections		EA	50	2		100	
5.31	Traffic Control Plan Sheets		Sheet	0	0	0	0	N/A
5.32	Traffic Control Cross Section Sheets		EA	0	0		0	N/A
5.33	Side Street/Driveway Profiles		Sheet	30	3	10	90	30 Side streets & driveways along the corridor.
5.34	Utility Adjustment Sheets		Sheet	0	0	0	0	N/A
5.35	Selective Clearing and Grubbing		Sheet	0	0	0	0	N/A
5.36	Erosion Control Plan		Sheet	0	0	0	0	Contractor to provide
5.37	SWPPP		Sheet	0	0	0	0	Contractor to provide
5.38	Project Control Network Sheet		Sheet	0	0	0	0	
5.39	Interim Standards		LS	1	0		0	
5.40	Utility Verification Sheet (SUE data)		Sheet	1	8	1	8	
Roadway Plans Technical Subtotal							52	858
5.41	Quality Assurance/Quality Control		LS	%	0%		0	
5.42	Supervision		LS	%	0%		0	

Project Activity 6: Drainage Analysis

Estimator: BA
Form Revised 3/28/05

Old Dixie Hwy (South of Park Rd to South of Northlake Blvd)
2004506

6.1	Determine Ground Water Elevations	Per Location	2	8	16	SHWEs 2 pond sites
6.2	Pond Siting Analysis and Report	Per Basin	0	0	0	N/A scope is for 2 pond sites identified by PBC
6.3	Design of Cross Drains	EA	0	0	0	N/A
6.4	Design of Roadway Ditches	Per Ditch Mile	0	0	0	N/A
6.5	Design of Outfalls	EA	2	12	24	
6.6	Design of Stormwater Management Facility (Offsite Pond)	EA	2	45	90	ICPR routing, TC calculations, CN calculations, stage storage calculations
6.7	Design of Stormwater Management Facility (Roadside Ditch as Linear Pond)	Per System	0	0	0	N/A
6.8	Design of Flood Plain Compensation Area	Per Encroachment	0	0	0	N/A
6.9	Design of Storm Drains	EA	61	2.5	153	Assume 5 structures per 500 ft rd, 1 per 300 ft outfall, 2 per pond plus 4 extra for sag, VC's and intersections
6.10	Optional Culvert Material	LS	0	0	0	N/A
6.11	French Drain Systems	Per 1000 Feet of French Drain	0	0	0	N/A
6.12	Drainage Wells	EA	0	0	0	N/A
6.13	Drainage Design Documentation Report	LS	1	50	50	Documentation of proposed drainage system, control structures, flood protection, seasonal high water elevations, etc.
6.14	Preparation of Bridge Hydraulic Report	EA	0	0	0	N/A
6.15	Temporary Drainage Analysis	LS	0	0	0	N/A

Project Activity 6: Drainage Analysis

6.16	Cost Estimate	LS	1	8	8	
6.17	Technical Special Provisions	LS	0	0	0	N/A
6.18	Other Drainage Analysis	LS	0	0	0	
Drainage Analysis Technical Subtotal					341	
6.19	Field Reviews	LS	1	12	12	
6.20	Technical Meetings	LS	1	16	16	Meetings are listed below
6.21	Quality Assurance/Quality Control	LS	%	0%	0	
6.22	Independent Peer Review	LS	%	0%	0	
6.23	Supervision	LS	%	0%	0	
Drainage Analysis Nontechnical Subtotal					28	
6.24	Coordination	LS	%	0%	0	

Technical Meetings

Base clearance water elevation	EA	0	0	0
Pond Siting	EA	0	0	0
Agency	EA	0	0	0
Local Governments (cities, counties)	EA	4	4	16
FDOT Drainage	EA	0	0	0
Other meetings	EA	0	0	0
Subtotal technical meetings				16

Progress Meetings (if required by FDOT)	EA	0	0	0
Phase Review Meetings	EA	0	0	0

Total Meetings				16
-----------------------	--	--	--	-----------

Carries to 6.20

Project Activity 7: Utilities

Estimator: CNO

Old Dixie Hwy (South of Park Rd to South of Northlake Blvd)

Form Revised 3/28/05

2004506

Activity	LS	1	0	0	
7.1 Kickoff Meeting	LS	1	0	0	N/A
7.2 Identify Existing UAOs	LS	1	12	12	12 existing utilities at 1 hr ea
7.3 Make Utility Contacts	LS	1	0	0	PBC to make contact
7.4 Exception Coordination	LS	1	0	0	N/A
7.5 Preliminary Utility Meeting	LS	1	4	4	1 person
7.6 Individual/Field Meetings	LS	1	8	8	Assume 2 field meetings, one person 4 hrs each
7.7 Collect and Review Plans and Data from UAO(s)	LS	1	24	24	2 hrs per 12 existing utilities.
7.8 Subordination of Easements Coordination	LS	1	0	0	N/A
7.9 Utility Design Meeting	LS	1	4	4	one person, 1 meeting
7.10 Review Utility Markups, Work Schedules, Processing of Schedules and Agreements	LS	1	0	0	N/A
7.11 Utility Coordination / Followup	LS	1	12	12	1 hr per 12 existing utilities.
7.12 Utility Constructability Review	LS	1	0	0	N/A
7.13 Additional Utility Services	LS	1	0	0	N/A
7.14 Processing Utility Work by Highway Contractor (UWHC)	LS	1	0	0	N/A
7.15 Contract Plans to UAO(s)	LS	1	0	0	N/A
7.16 Certification/Close-out	LS	1	0	0	N/A
7.17 Other Utility	LS	1	0	0	N/A

Project Activity 8: Environmental Permits

Estimator: BA
Form Revised 3/28/05

Old Dixie Hwy (South of Park Rd to South of Northlake Blvd)
2004506

8.1	Preliminary Project Research	LS	1	16	16	Pull existing permits, research information
8.2	Complete Permit Involvement Form	LS	1	0	0	N/A
8.3	Establish Wetland Jurisdictional Lines	LS	1	0	0	N/A
8.4	Agency Verification of Wetland Data	LS	1	0	0	N/A
8.5	Complete And Submit All Required Permit Applications	LS	1	120	120	SFWMD & USACE
8.6	Prepare Dredge and Fill Sketches	LS	1	12	12	Needed for outfall to surface water.
8.7	Prepare USCG Permit Sketches	LS	1	0	0	N/A
8.8	Prepare Easement Sketches	LS	1	0	0	N/A
8.9	Prepare R/W Occupancy Sketches	LS	1	0	0	N/A
8.10	Prepare Coastal Construction Control Line (CCCL) Permit Sketches	LS	1	0	0	N/A
8.11	Prepare Tree Permit Information	LS	1	24	24	Vegetation removal permit needed for Town of Lake Park
8.12	Mitigation Coordination and Meetings	LS	1	0	0	N/A
8.13	Mitigation Design	LS	1	0	0	N/A
8.14	Environmental Clearances	LS	1	0	0	N/A
8.15	Other Environmental	LS	1	0	0	N/A
Environmental Permits Technical Subtotal					172	
8.16	Technical Meetings	LS	1	8	8	Meetings are listed below
8.17	Quality Assurance/Quality Control	LS	%	0%	0	
8.18	Supervision	LS	%	0%	0	
Environmental Permits Nontechnical SubTotal					8	
8.19	Coordination	LS	%	0%	0	

Project Activity 8: Environmental Permits

Technical Meetings

WMD	EA	1	8	8
ACOE	EA	0	0	0
USCG	EA	0	0	0
USFWS	EA	0	0	0
FFWCC	EA	0	0	0
FDOT	EA	0	0	0
Other meetings	EA	0	0	0
Subtotal technical meetings				8

Progress Meetings	EA	0	0	0
Phase Review Meetings	EA	0	0	0

Total Meetings				8
-----------------------	--	--	--	----------

Carries to 8.16

Project Activity 19: Signing and Pavement Marking Analysis

Estimator: CNO
Form Revised 3/28/05

Old Dixie Hwy (South of Park Rd to South of Northlake Blvd)
2004506

19.1	Traffic Data Analysis	LS	1	0	0	N/A
19.2	No Passing Zone Study	LS	1	0	0	N/A
19.3	Reference and Master Design File	LS	1	107	107	30 hrs set up, 75 hrs per mile - plus 12 hours per intersection
19.4	Multi Post Sign Support Calculations	EA	0	0	0	N/A
19.5	Sign Panel Design Analysis	EA	0	0	0	N/A
19.6	Sign Lighting/Electrical Calculations	EA	0	0	0	N/A
19.7	Quantities	LS	1	27.5	28	Based on a 40 scale with 11 plan sheets, at 2.5 hours per plan sheet
19.8	Computation Book	LS	1	0	0	N/A
19.9	Cost Estimate	LS	1	8	8	
19.10	Technical Special Provisions	LS	1	0	0	N/A
19.11	Other Signing and Pavement Marking	LS	1	0	0	N/A
Signing & Pavement Marking Analysis Technical Subtotal					143	

Project Activity 19: Signing and Pavement Marking Analysis

19.12	Field Reviews	LS	1	8	8	
19.13	Technical Meetings	LS	1	16	16	Meetings are listed below
19.14	Quality Assurance/Quality Control	LS	%	0%	0	
19.15	Independent Peer Review	LS	%	0%	0	
19.16	Supervision	LS	%	0%	0	
Signing & Pavement Marking Analysis Nontechnical Subtotal					24	
19.17	Coordination	LS	%	0%	0	

Technical Meetings

Sign panel design	EA	0	0	0
Queue length analysis	EA	0	0	0
Local Governments (cities, counties)	EA	0	0	0
Other meetings	EA	0	0	0
Subtotal technical meetings				0
Progress Meetings	EA	2	4	8
Phase Review Meetings	EA	2	4	8
Total Meetings				16

Carries to 19.13

Project Activity 20: Signing and Pavement Marking Plans

Estimator: CNO

Old Dixie Hwy (South of Park Rd to South of Northlake Blvd)

2004506

20.1	Key Sheet		Sheet	1	4	1	4	
20.2	Summary of Pay Items		LS	1	6		6	
20.3	Tabulation of Quantities		Sheet	2	9	2	18	12 hrs 1st sheet and 6 hrs 2nd sheet
20.4	General Notes / Pay Item Notes		Sheet	1	8	1	8	
20.5	Project Layout		Sheet	0	0	0	0	N/A
20.6	Plan Sheet		Sheet	11	4	11	44	
20.7	Typical Details		EA	1	8	1	8	
20.8	Guide Sign Work Sheet (s)		EA	0	0		0	N/A
20.9	Traffic Monitoring Site		EA	0	0		0	N/A
20.10	Cross Sections		EA	0	0		0	N/A
20.11	Special Service Point Detail		EA	0	0		0	N/A
20.12	Special Details		LS	1	0		0	N/A
20.13	Interim Standards		LS	1	0		0	N/A
Signing & Pavement Marking Plans Technical Subtotal						16	88	
20.14	Quality Assurance/Quality Control		LS	%	0%		0	
20.15	Supervision		LS	%	0%		0	

PROJECT NAME: Old Dixie Hwy (South of Park Rd
to South of Northlake Blvd)
PBC Project No. 2004506

CLIENT: Palm Beach County
COUNTY: Palm Beach

MISCELLANEOUS & OUT-OF-POCKET EXPENSES

PAGE 1 of 1

REPRODUCTION	# OF SETS	11 X 17"	8.5 X 11"	8.5 X 14"	22" X 34"	FINAL TRACING	PLOTS	COPIES	TOTAL
TYPICAL SECTION PACKAGE									
PAVEMENT DESIGN									
ACCESS MANAGEMENT PLAN									
DRAINAGE REPORT	2		150						
MASTER PLAN SUBMITTAL									
Roadway Plans	6	600							
PLANS TO EACH UTILITY OWNER	2	2800	7						
ROADWAY 65% SUBMITTAL									
Roadway & Signing Pavt Marking Plans	6	750							
PRELIMINARY PERMIT PACKAGE	6	750	300						
FINAL PERMIT PACKAGE	6	750	300						
ROADWAY 90% SUBMITTAL									
Roadway & Signing Pavt Marking Plans	6	750							
Computation Book	2			150					
FINAL UTILITY PLAN TO OWNERS	1	1400							
PREL. DESIGN NOTES/COMP BOOK									
UTILITY AGREEMENTS, JPA's									
ROADWAY 100% SUBMITTAL									
Roadway & Signing Pavt Marking Plans	6	750	10						
Computation Book	2			150					
FINAL DESIGN NOTES/COMP BOOK									
FINAL SUBMITTAL	30	3750							
Computation Book	2			150					
Total Sheets:		12300	767	450	0	0	0	0	0
Cost per Sheet:		\$0.20	\$0.10	\$0.10	\$0.00	\$0.00	\$0.00	\$0.00	\$0.00
Total Cost:		\$2,460.00	\$76.70	\$45.00	\$0.00	\$0.00	\$0.00	\$0.00	\$2,581.70

TRAVEL	# OF TRIPS	# OF PEOPLE	# OF MILES	UNIT COST	TOTAL
SHIPPING	Months				
Shipping/Telephone/Fax	15	X		\$78.50	\$1,177.50
PERMITTING					
SFWMD	ERP				\$3,500.00
City of Lake Park Tree Permit					\$1,500.00
TOTAL:					\$5,759.20

Palm Beach County Project No. 2004506

Betsy Lindsay, Inc

Scope of Services OLD DIXIE HIGHWAY

The surveying services for OLD DIXIE HIGHWAY project will be limited to the following tasks.

1. Establish horizontal and vertical control tied to State Plane Coordinates and NGVD 1929.
2. Locate above ground features and utilities for an additional 500-foot along Old Dixie Hwy.
3. Collect cross sections extending 25 feet outside the right of way lines at 100-foot intervals. Shoot the finished floor of any buildings falling within 25 feet of the right of way. Acquire side street profiles extending 50 feet up the side streets for the additional 500-foot along Old Dixie Hwy. .
4. Locate and detail drainage structures for the additional 500 foot along Old Dixie Hwy..
5. Topo area 2 and 3 for the two new retention pond areas as delineated by ACE.
6. Perform and prepare a tree survey for the three new retention areas as delineated by ACE.
7. Process the field collected data into a cadd file.
8. Create digital terrain model.
9. Input the plats and the limited title searches supplied by the county along the additional 500' along Old Dixie Hwy and the new retention areas. Create a base map reflecting all existing right of way and adjoining platted subdivisions and create geometry for search ties for the Baseline and Right of Way.
10. Tie in property corners.
11. Soft dig forty test hole locations. *(Optional Service)*
12. Tie test hole reference points to survey control and plot in cadd files. *(Optional Service)*

OLD DIXIE HIGHWAY
County Project No. 2004506

Right-of-Way Review and Design Survey

Betsy Lindsay, Inc. - Work Breakdown and Fee Estimate
BASIC SERVICES SA 3

[illegible]

**OLD DIXIE HIGHWAY
County Project No. 2004506**

Right-of-Way Review and Design Survey

Betsy Lindsay, Inc. - Work Breakdown and Fee Estimate

OPTIONAL SERVICES SA 3

6	OPTIONAL SERVICES						
7	40 test holes @ \$275 per hole to soft dig	40					✓ \$11,000.00
8	Survey the 40 test holes (tie references to control)		8	1		2	✓ \$965.76
9							
10	TOTAL 8 HOUR DAYS						
			8	1			



TIERRA SOUTH FLORIDA
Geotechnical Engineering - Material Testing - Inspection Services

October 14, 2009

Christopher N. O'Reilly, PE
Principal/Project Manager
American Consulting Engineers of Florida, LLC
2000 Palm Beach Lakes Blvd, Suite 1000
West Palm Beach, FL 33409

Re: **Proposal for Geotechnical Services**
Proposed Pond Sites
Old Dixie Highway
Palm Beach County, Florida
TSF Proposal No.: 0908-245 (revised)

Dear Chris:

As requested, Tierra South Florida, Inc. (TSF) is pleased to submit this proposal for the above-referenced project. The proposal is based on discussion with Mr. Christopher O'Reilly, P.E. on August 12, 2009. Revision to remove the Borehole Permeability from the scope was requested on October 13, 2009.

It is our understanding that the proposed improvements will include 2 retention ponds ranging from 6.14 to 6.34 acres.

PROPOSED SCOPE OF WORK

All work performed by TSF will be in general accordance with Palm Beach County and FDOT standards. As requested, based on our understanding of the project, we propose perform the following:

1. Perform visual reconnaissance.
2. Perform 2 borings per acres, a total of 24 SPT borings to a depth of 20 feet.
3. Perform laboratory testing.
4. Provide geotechnical recommendations.

The test locations will be approximately located in the field by our personnel by measuring distances with a tape from known reference points.

Prior to drilling at the project site, TSF will notify the local utility companies and request that underground utilities be marked. Our experience, however, is that the utility companies will not mark privately owned utilities. Our proposal assumes that private utility lines will be located in the field by others prior to mobilization of the drill rig.

Upon completion of the field exploration, laboratory testing will be performed on selected samples. The study will be summarized in accordance with the FDOT's Soil and Foundation Manual.

A geotechnical engineer will evaluate the results of field work. A report will be issued that contains the exploration data, and a discussion of some construction considerations.

ESTIMATED FEES

It is proposed that the fee for the performance of the services outlined above is determined on a unit price basis in accordance with the attached Fee Schedule (attachments) and that the work be performed pursuant to TSF's General Conditions enclosed herewith and incorporated into this proposal. The estimated fees for the project are attached.

Our estimate covers the work needed to present our findings and recommendations in a formal report. Not included are reviews of drawings, preparation of construction specifications, special conferences and any other work requested after submittal of our report.

This estimated fee assumes that the site is readily accessible to our truck-mounted drilling equipment. Any bulldozer or wrecker services required to provide access pathways or mobility assistance to our truck-mounted drill rig are not included in this proposal.

Boring, sampling, and testing requirements are a function of the subsurface conditions encountered. Therefore, the estimated fee previously indicated is approximate, and compensation for the exploration will be based on the actual work and tests performed. We will endeavor to keep the exploration cost at a minimum consisting with good engineering practice.

SCHEDULE AND AUTHORIZATION

TSF will proceed with the work after receipt of a signed copy of this proposal. With our present schedule, we can commence work within several days of project approval (weather permitting and permit approval). The fieldwork will take about five days to complete. The written report can be submitted about 1 week after completion of the field exploration, depending on the extent of the laboratory-testing program. Verbal preliminary recommendations can be made to appropriate parties prior to submittal of the written report.

We at TSF appreciate the opportunity to submit this proposal and look forward to working with you on this project. If you should have any questions concerning our proposal, please contact our office.

Respectfully submitted,

TIERRA SOUTH FLORIDA, INC.


Raj Krishnasamy, P.E.
Principal Engineer

RK:

Attachments: 1. Fee Breakdown

Client Information		Project Information	
Firm:		Firm:	
Name:		Name:	
Title:		Address:	
Date:		Phone #:	
		Fax #:	

TIERRA SOUTH FLORIDA, INC.
ATTACHMENT - 1
FEE SCHEDULE FOR GEOTECHNICAL SERVICES

I.		Unit	# of Units	Unit Price	Total
	FIELD INVESTIGATION				
	Mobilization of Men and Equipment				
	Truck-Mounted Equipment	Trip	1	\$ 350.00	✓ 350.00
	Standard Penetration Test Borings				
	(By Truck-Mounted Equipment)				
	0 - 50 ft depth	L.F.	480	\$ 12.00	✓ 5,760.00
	50 - 100 ft depth	L.F.	0	\$ 14.00	0.00
	Grout-Seal Boreholes				
	(By Truck-Mounted Equipment)				
	0 - 50 ft depth	L.F.	0	\$ 5.00	0.00
	50 - 100 ft depth	L.F.	0	\$ 6.00	0.00
	Casing Allowance				
	(By Truck-Mounted Equipment)				
	0 - 50 ft depth	L.F.	0	\$ 6.00	0.00
	50 - 100 ft depth	L.F.	0	\$ 8.00	0.00
	Rock Coring (Structures)				
	(By Truck-Mounted Equipment)				
	0 - 50 ft deep	L.F.	0	\$ 30.00	0.00
	50 - 100 ft deep	L.F.	0	\$ 36.00	0.00
	Borehole Permeability Tests	Test	0	\$ 275.00	0.00
	Traffic Control	Day	0	\$ 800.00	0.00
	(1-man crew with safety equipments)				
	Auger Borings (Roadway)	L.F.	0	\$ 8.50	0.00
	Auger Borings (Pond)	L.F.	0	\$ 8.00	0.00
	Hand Muck Probes (2-man crew)	Day	0	\$ 800.00	0.00
	Double Ring Infiltration Test	Test	0	\$ 500.00	0.00
	Pavement Cores, Asphalt	Each	0	\$ 85.00	0.00
	Core Machine Rental	Day	0	\$ 300.00	0.00
II.	LABORATORY TESTING				
	Visual Examination by Staff Engineer	Hour	4	\$ 85.00	✓ 340.00
	Natural Moisture Content Tests	Test	8	\$ 10.00	✓ 80.00
	Grain-Size Analysis - Full Gradation	Test	0	\$ 60.00	0.00
	Grain-Size Analysis - Single Sieve	Test	0	\$ 25.00	0.00
	Organic Content Tests	Test	8	\$ 35.00	✓ 280.00

TIERRA SOUTH FLORIDA, INC.
ATTACHMENT - 1
FEE SCHEDULE FOR GEOTECHNICAL SERVICES

Atterberg Limit Tests	Test	0	\$	75.00	\$	0.00
Environmental Tests (pH, sulfates, chlorides, resistivity)	Set	0	\$	185.00	\$	0.00
LBR Test	Test	0	\$	300.00	\$	0.00
III. FIELD ENGINEERING AND TECHNICAL SERVICES						
Site Recon./Utility Coordination/Traffic Control						
Sr. Engineering Technician	Hour	8	\$	65.00	\$	✓ 520.00
IIIA. ENGINEERING AND TECHNICAL SERVICES						
Principal Engineer	Hour	0	\$	145.00	\$	0.00
Senior Geotechnical Engineer	Hour	2	\$	125.00	\$	✓ 250.00
Project Engineer	Hour	10	\$	115.00	\$	✓ 1,150.00
Staff Engineer	Hour	0	\$	85.00	\$	0.00
Draftperson	Hour	4	\$	60.00	\$	✓ 240.00
TOTAL FEE FOR GEOTECHNICAL SERVICES - POND					\$	✓ 8,970.00



August 18, 2009

American Consulting Engineers of Florida, LLC
2000 Palm Beach Lakes Blvd, Suite 1000
West Palm Beach, Florida 33409

Attn: Christopher N. O'Reilly, PE
Principal/Project Manager

**RE: Proposal for Phase I Environmental Site Assessment Services
Two (2) Pond Sites off Old Dixie Highway
Palm Beach County, Florida
Proposal No.: 65-09-245**

Mr. O'Reilly:

Tierra South Florida (TSF) is pleased to submit this proposal to conduct a Phase I Environmental Site Assessment (ESA) on the two (2) pond sites. This proposal includes a review of provided project information along with our proposed scope of services, estimated schedule and fee information.

PROJECT INFORMATION

TSF understands that the property consists of two (2) pond sites near Old Dixie Highway and Water Tower Road in Palm Beach County, Florida. No previous reports or other project related information has been provided to TSF.

PHASE I ESA SCOPE OF SERVICES

TSF will perform the Phase I ESA to search for evidence of recognized environmental conditions in connection with the subject property. TSF proposes to perform the Phase I ESA in general accordance with ASTM E 1527-05, Standard Practice for Environmental Site Assessments: *Phase I Environmental Site Assessment Process* (ASTM E 1527-05).

TSF will perform the assessment under the supervision of an environmental professional as defined in 40 CFR 312.10. The scope of services will include records review, reconnaissance, interviews, and preparation of a report. TSF will review environmental regulatory database information regarding environmental conditions on and surrounding the subject property, physical setting sources, and historical information sources regarding the past uses of the property. We will also ask for and review other helpful documents regarding environmental conditions on the subject property provided from you, the property owner, and key site manager (if any are identified).

**Proposal for Phase I Environmental Site Assessment Services
Two (2) Pond Sites off Old Dixie Highway
Palm Beach County, Florida
Proposal No.: 65-09-245
Page 2 of 3**

TSF will attempt to conduct interviews as required in ASTM E 1527-05. TSF will conduct the interviews by phone, in writing, or in person. Parties to be interviewed include you or your designated representative as the "user" of the Phase I ESA, the current property owner, key site manager, and one or more representatives of state and/or local government agencies. Past owners, operators, occupants, and neighboring property owners or occupants may also be interviewed.

TSF will prepare a report of our findings and provide two copies. The report will include a Summary section at the beginning that contains the identified on-site or off-site, historical or current recognized environmental conditions, any data gaps encountered, and the impact of those data gaps on the assessment. The remainder of the report will include the methodology and resources used and the data gathered. Recommendations, based upon the project findings, will be presented.

ASSESSMENT OF ISSUES BEYOND THE SCOPE OF ASTM E 1527

TSF understands that American has not requested TSF to assess any environmental issues or conditions outside the scope of the ASTM E 1527-05 (non-scope considerations identified in ASTM E 1527-05 §13) in connection with this Phase I ESA. Mold, asbestos, indoor air quality, radon, and drinking water assessments are not included in this scope of work. Should any of these services be requested please contact TSF for a revised proposal and cost estimate.

CLIENT RESPONSIBILITIES

ASTM E 1527-05 §6, §10.8, §10.9, and Appendix X.3 describe certain responsibilities of the client as the user of the Phase I ESA to collect and provide information to the environmental professional to help identify the possibility of recognized environmental conditions in connection with the property. This information is identified on the attached User Questionnaire. Review of reasonably ascertainable recorded land title records and lien records to identify environmental liens important to completion of the Phase I. TSF requests any title records and lien information for the property be provided for our use.

The attached User Questionnaire is intended to help you meet the user responsibilities under ASTM E 1527-05. ASTM E 1527-05 also requires that TSF review the information at or prior to the beginning of our site reconnaissance. TSF requests that you complete the User Questionnaire and return it along with the executed proposal authorization. The completed User Questionnaire will become an integral part of the Phase I report.

THIRD PARTY RELIANCE

Third party reliance letters may be issued upon request and upon the payment of the then-current fee for such letters. All third parties relying on TSF reports, by such

Proposal for Phase I Environmental Site Assessment Services
Two (2) Pond Sites off Old Dixie Highway
Palm Beach County, Florida
Proposal No.: 65-09-245
Page 3 of 3

reliance, agree to be bound by this proposal. No reliance by any party is permitted without such agreement, regardless of the content of the reliance letter itself.

SCHEDULE

TSF proposes to deliver the report in 3 weeks after we receive written authorization to proceed. Completion of the project may be affected by access to the property, the availability of information, and other factors.

FEES

TSF will prepare this Phase I ESA for the lump sum fee of \$3,500.00.

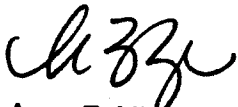
AUTHORIZATION

To authorize our services, please sign and complete the attached proposal authorization and instructions for payment form, and return one copy of the authorized proposal to our office. We will proceed with the work upon receipt of proposal authorization. TSF will perform the work in accordance with the terms of this proposal.

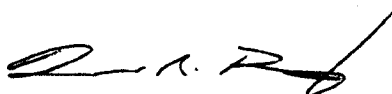
Please call with any questions you may have or if TSF can be of additional service. We look forward to working with you on this and future projects.

Respectfully Submitted,

TIERRA SOUTH FLORIDA



Anne E. Mize
Business Development Director



Donald R. Polanis, EI, CGC
Environmental Specialist

Attachments: Proposal Authorization & Payment Instructions
Standards Phase I Questionnaire
Property Contact Information

11/12/2009

Engineering & Public Works Roadway Production
PARTICIPATION FOR MWBE/SBE CONSULTANTS
Supplement Number 3

Project Name: Old Dixie Highway from Park Avenue to
Prime Consultant: American Consulting Engineers of Florida, LLC
Telephone No.: (561) 253-9550
Supplement date: 10/28/2009

Project No.: 2004506
Prime Contact Person: Chris O'Reilly
Resolution Date: 04/05/2005 Res #: R2005-0632
Department: Engineering & Public Works

Name / Address / Telephone of Minority Sub-Consultant	Type / Description of Work Performed by Sub-Consultant	Contract Dollar Amount for Sub-Consultant				
		Black	Hispanic	Other	Women	White Male
Betsy Lindsay, Inc. 208 N US HIGHWAY 1 UNIT 8 TEQUESTA, FL 33469 (561) 575-5275	Surveyor Surveyor	MWBE	0.00	0.00	0.00	0.00
		SBE	0.00	0.00	0.00	18,891.84
Tierra South Florida, Inc. 2765 VISTA PKY STE 9 WEST PALM BEACH, FL 33411 (561) 687-8539	Geotechnical	MWBE	0.00	0.00	0.00	0.00
		SBE	0.00	0.00	12,470.00	0.00
Total MWBE		0.00	0.00	0.00	0.00	
%						
Total SBE		0.00	0.00	12,470.00	18,891.84	0.00
%						
Total Supplement Amount:		336,524.46				
				3.70	5.61	

Client#: 7524

AMERCON3

ACORD. CERTIFICATE OF LIABILITY INSURANCEDATE (MM/DD/YYYY)
10/20/2009

PRODUCER

ISU Suncoast Insurance Assoc
P.O. Box 22668
Tampa, FL 33622-2668
813 289-5200

THIS CERTIFICATE IS ISSUED AS A MATTER OF INFORMATION ONLY AND CONFERS NO RIGHTS UPON THE CERTIFICATE HOLDER. THIS CERTIFICATE DOES NOT AMEND, EXTEND OR ALTER THE COVERAGE AFFORDED BY THE POLICIES BELOW.

INSURED

American Consulting Engineers
of Florida, LLC
2818 Cypress Ridge Blvd. #200
Wesley Chapel, FL 33544

INSURERS AFFORDING COVERAGE

INSURER	NAIC #
INSURER A: Charter Oak Fire Insurance Comp	25615
INSURER B: Travelers Indemnity Company	25658
INSURER C: Travelers Casualty and Surety C	19038
INSURER D: Hudson Insurance Company	25054
INSURER E:	

COVERAGES

THE POLICIES OF INSURANCE LISTED BELOW HAVE BEEN ISSUED TO THE INSURED NAMED ABOVE FOR THE POLICY PERIOD INDICATED. NOTWITHSTANDING ANY REQUIREMENT, TERM OR CONDITION OF ANY CONTRACT OR OTHER DOCUMENT WITH RESPECT TO WHICH THIS CERTIFICATE MAY BE ISSUED OR MAY PERTAIN, THE INSURANCE AFFORDED BY THE POLICIES DESCRIBED HEREIN IS SUBJECT TO ALL THE TERMS, EXCLUSIONS AND CONDITIONS OF SUCH POLICIES. AGGREGATE LIMITS SHOWN MAY HAVE BEEN REDUCED BY PAID CLAIMS.

TYPE OF INSURANCE	POLICY NUMBER	POLICY EFFECTIVE DATE (MM/DD/YY)	POLICY EXPIRATION DATE (MM/DD/YY)	LIMITS
A GENERAL LIABILITY <input checked="" type="checkbox"/> COMMERCIAL GENERAL LIABILITY <input type="checkbox"/> CLAIMS MADE <input checked="" type="checkbox"/> OCCUR GEN'L AGGREGATE LIMIT APPLIES PER: <input type="checkbox"/> POLICY <input type="checkbox"/> PROJECT <input type="checkbox"/> LOC	6802963L517	08/10/09	08/10/10	EACH OCCURRENCE \$1,000,000 DAMAGE TO RENTED PREMISES (EA OCCURRENCE) \$1,000,000 MED EXP (Any one person) \$5,000 PERSONAL & ADV INJURY \$1,000,000 GENERAL AGGREGATE \$2,000,000 PRODUCTS - COMPROP AGG \$2,000,000
B AUTOMOBILE LIABILITY <input checked="" type="checkbox"/> ANY AUTO <input type="checkbox"/> ALL OWNED AUTOS <input type="checkbox"/> SCHEDULED AUTOS <input checked="" type="checkbox"/> HIRED AUTOS <input checked="" type="checkbox"/> NON-OWNED AUTOS GARAGE LIABILITY <input type="checkbox"/> ANY AUTO	BA2955L401	08/10/09	08/10/10	COMBINED SINGLE LIMIT (EA accident) \$1,000,000 BODILY INJURY (Per person) \$ BODILY INJURY (Per accident) \$ PROPERTY DAMAGE (Per accident) \$ AUTO ONLY - EA ACCIDENT \$ OTHER THAN AUTO ONLY: EA ACC \$ AGG \$
B EXCESS/UMBRELLA LIABILITY <input checked="" type="checkbox"/> OCCUR <input type="checkbox"/> CLAIMS MADE DEDUCTIBLE \$ RETENTION \$	CUP6837Y886	08/10/09	08/10/10	EACH OCCURRENCE \$2,000,000 AGGREGATE \$2,000,000 \$ \$ \$
C WORKERS COMPENSATION AND EMPLOYERS' LIABILITY ANY PROPRIETOR/PARTNER/EXECUTIVE OFFICER/MEMBER EXCLUDED? If yes, describe under SPECIAL PROVISIONS below	UB6831Y741	08/10/09	08/10/10	<input checked="" type="checkbox"/> WC STATUTORY LIMITS <input type="checkbox"/> OTHER E.L. EACH ACCIDENT \$1,000,000 E.L. DISEASE - EA EMPLOYEE \$1,000,000 E.L. DISEASE - POLICY LIMIT \$1,000,000
D OTHER Professional Liability	AEE7152704	08/10/09	08/10/10	\$2,000,000 per claim \$2,000,000 annl aggr.

DESCRIPTION OF OPERATIONS / LOCATIONS / VEHICLES / EXCLUSIONS ADDED BY ENDORSEMENT / SPECIAL PROVISIONS
 Professional Liability is written on a claims made and reported basis.

RE: All Projects

Palm Beach Board of County Commissioners, a Political Subdivision of the State of Florida, its officers, employees and agents are Additional (See Attached Descriptions)

CERTIFICATE HOLDER

Palm Beach County Board of County Commissioners
c/o
Engineering Department
2300 North Jog Road;3rd Floor
West Palm Beach, FL 33411-2745

CANCELLATION 10 Days for Non-Payment

SHOULD ANY OF THE ABOVE DESCRIBED POLICIES BE CANCELLED BEFORE THE EXPIRATION DATE THEREOF, THE ISSUING INSURER WILL ENDEAVOR TO MAIL 30 DAYS WRITTEN NOTICE TO THE CERTIFICATE HOLDER NAMED TO THE LEFT, BUT FAILURE TO DO SO SHALL IMPOSE NO OBLIGATION OR LIABILITY OF ANY KIND UPON THE INSURER, ITS AGENTS OR REPRESENTATIVES.

AUTHORIZED REPRESENTATIVE

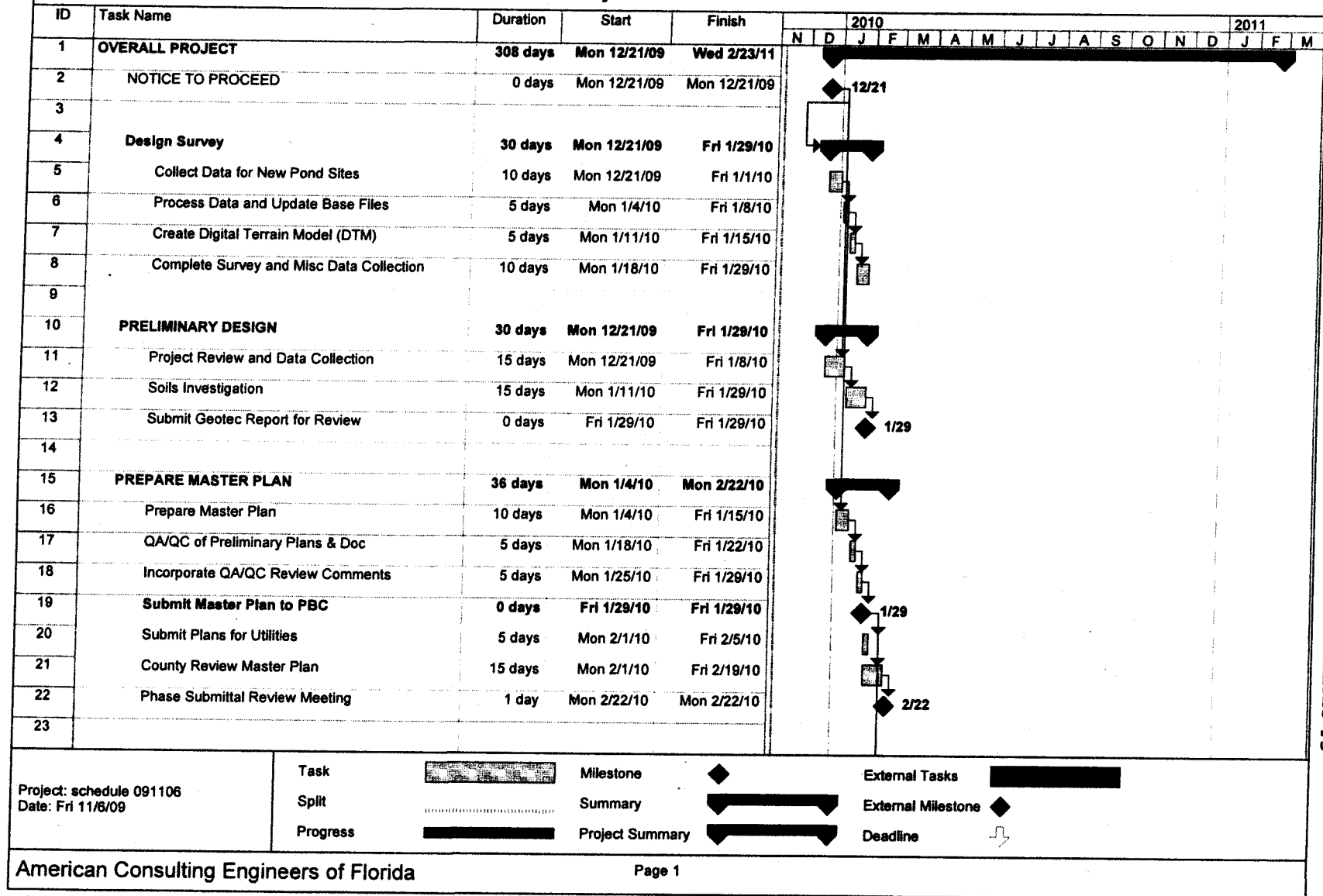


DESCRIPTIONS (Continued from Page 1)

Insured's for General Liability only for this project. Includes Prior
Acts coverage to effective date of project. Professional Liability
Retroactive Date - 08/10/2002.

Old Dixie Hwy

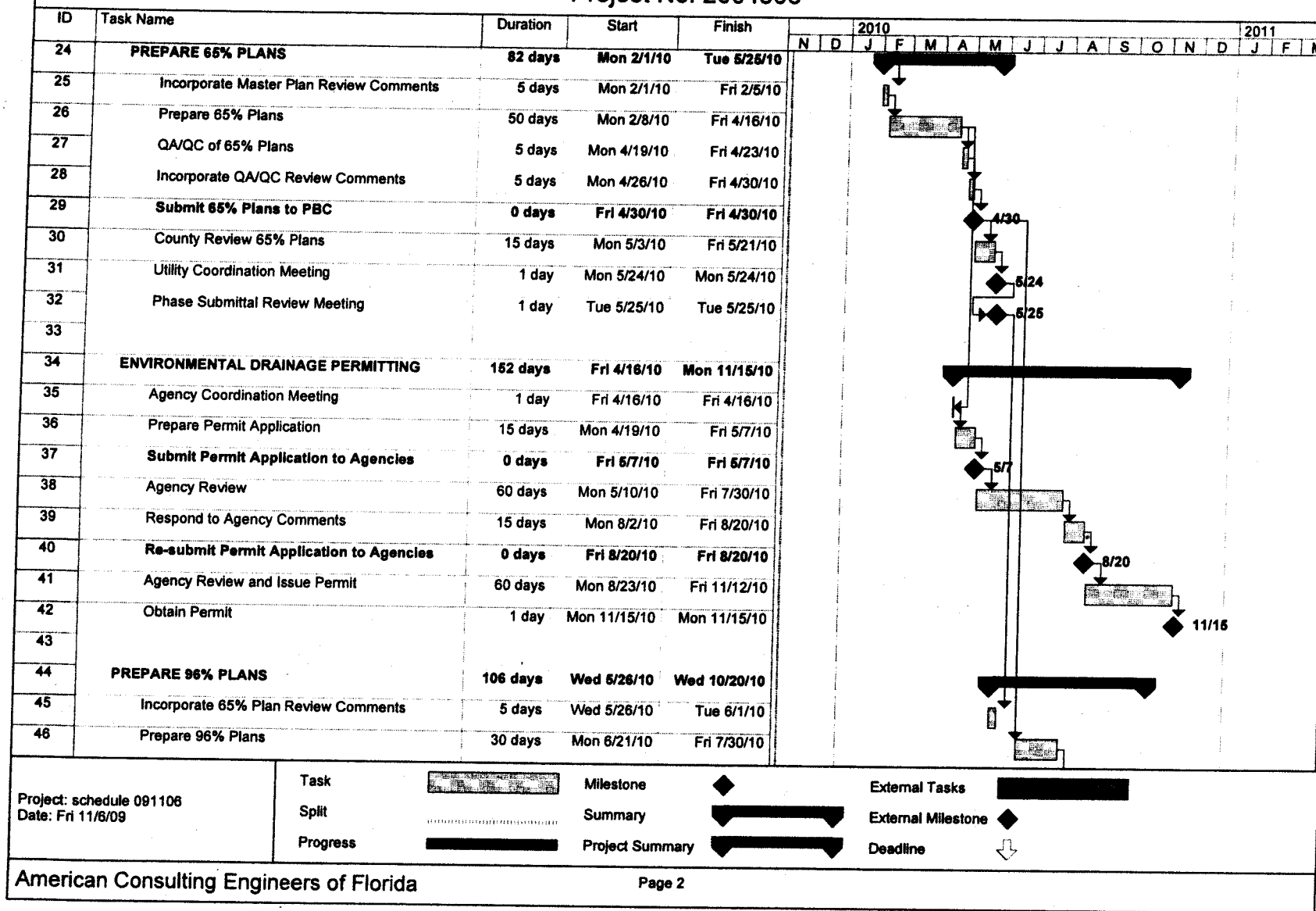
Palm Beach County Project No. 2004506



Attachment #3

Old Dixie Hwy

Palm Beach County Project No. 2004506



Old Dixie Hwy

Palm Beach County
Project No. 2004506

