

II. FISCAL IMPACT ANALYSIS

A. Five Year Summary of Fiscal Impact:

| Fiscal Years | 2006 | 2007 | 2008 | 2009 | 2010 |
|---|--------------------|----------|----------|----------|-----------|
| Capital Expenditures | <u>0</u> | <u>0</u> | <u>0</u> | <u>0</u> | <u>0</u> |
| Operating Costs | <u>0</u> | <u>0</u> | <u>0</u> | <u>0</u> | <u>0</u> |
| External Revenues | <u>0</u> | <u>0</u> | <u>0</u> | <u>0</u> | <u>0</u> |
| Program Income (County) | <u>0</u> | <u>0</u> | <u>0</u> | <u>0</u> | <u>0</u> |
| In-Kind Match (County) | <u>0</u> | <u>0</u> | <u>0</u> | <u>0</u> | <u>0</u> |
| NET FISCAL IMPACT | <u>0</u> | <u>0</u> | <u>0</u> | <u>0</u> | <u>*0</u> |
| # ADDITIONAL FTE POSITIONS (Cumulative) | <u>0</u> | <u>0</u> | <u>0</u> | <u>0</u> | <u>0</u> |
| Is Item Included in Current Budget? | | | Yes_ | No | |
| Budget Account No.: | Fund_ | Dept_ | Unit_ | Object | |
| | Reporting Category | | | | |

B. Recommended Sources of Funds/Summary of Fiscal Impact:

Source: No funding is requested as part of this agenda item.

Impact: * No fiscal impact. Information only.

C. Departmental Fiscal Review: Lavinia D. Gardner
 (Lavinia Gardner, Chief Financial Officer)

III. REVIEW COMMENTS:

A. OFMB Fiscal and/or Contract Dev. And Control Comments:

[Signature]
 OFMB NDC 5-310 5/18/10

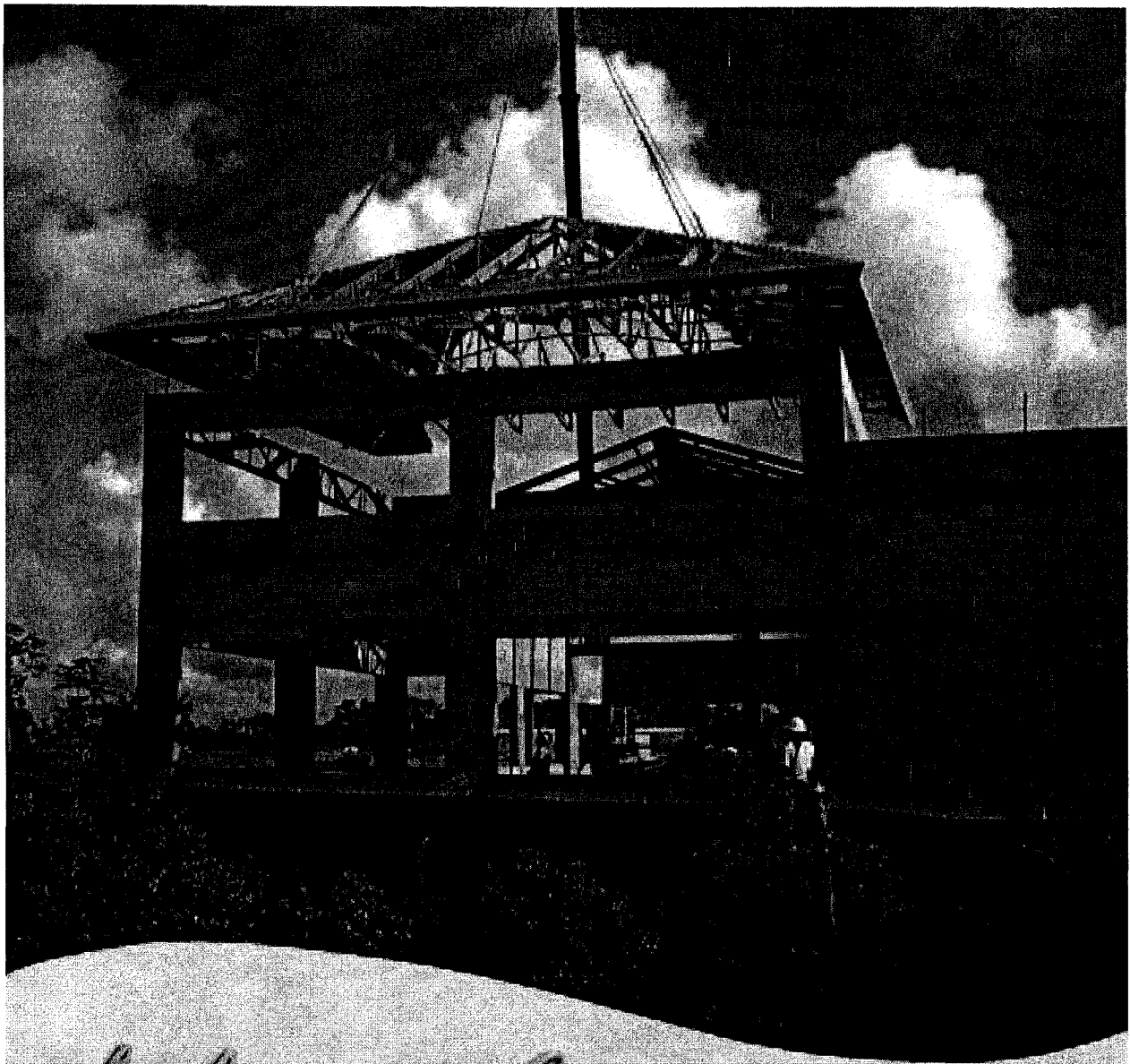
[Signature]
 Contract Dev. And Control

B. Legal Sufficiency:

[Signature] 5/6/10
 Assistant County Attorney

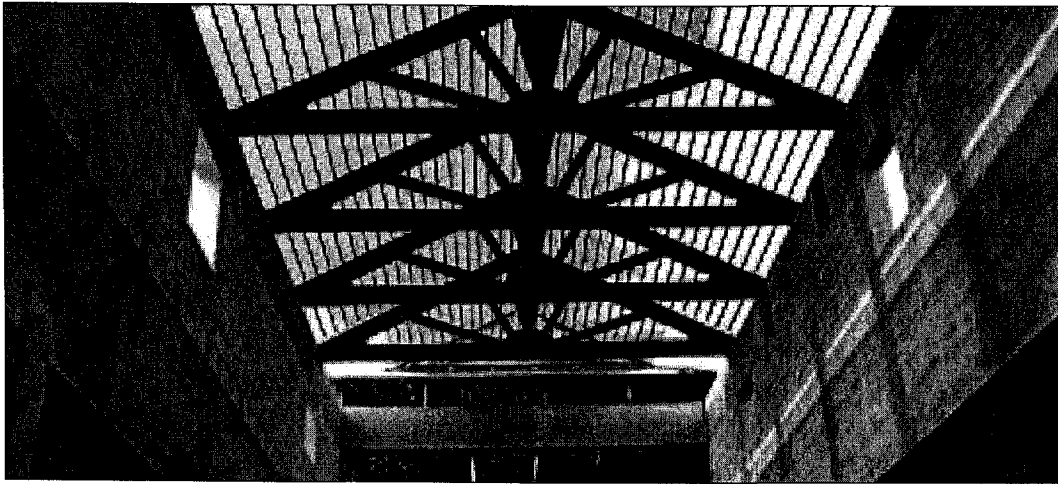
C. Other Department Review:

 Department Director



*Library Expansion
Program II
Update*





LEP Update II 2010

The Palm Beach County Board of County Commissioners (BCC) approved the Library Expansion Program (LEP) II in August 2002 to expand, construct, and renovate libraries to meet the growing needs of the community. The following November, the voters of the Taxing District overwhelmingly approved a referendum authorizing the County to sell \$55 million in General Obligation Bonds to be used in conjunction with \$15 million of Impact Fee Revenue. The total funding for the LEP II at the time of approval in FY2002 was \$70 million.

The 10 projects completed to date have cost \$70,706,200. With approval from the BCC, revenue to partially fund the shortfall has been transferred annually from the Library's operating funds. These funds, along with interest earned on revenues plus construction grants awarded by the State of Florida, will make

it possible for the Library to complete all projects approved in the LEP II.

The expansion program coincided with a major shift in the library environment. Libraries have always been about books, research, and quiet, but their role in the community is expanding. Libraries are a lively community gathering place with areas for computer use, social networking, group activities, quiet study, entertainment, and reading. The renovations and expansions have allowed us to incorporate this new concept in library service and the completed buildings reflect this exciting change in the library environment.

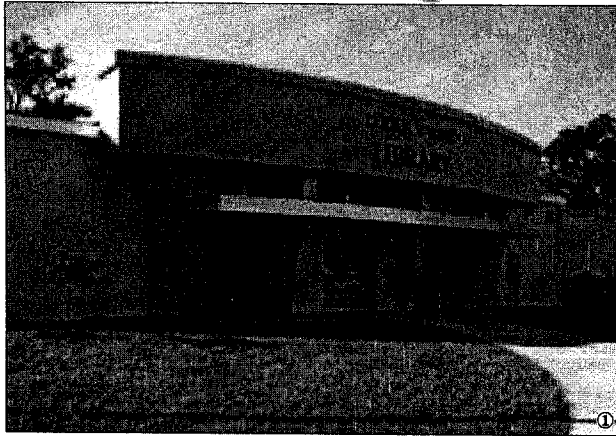
At this time we have completed 10 projects. Two buildings are currently under construction: the renovation of the Greenacres Branch and the expansion of the Gardens Branch in Palm Beach Gardens. Over

the next two years we will be renovating the West Boynton Branch and the Main Library on Summit Boulevard. Jupiter was renovated in 2003 with impact fees; as a result it will only need some minor interior refurbishing at the end of the program.

Land has been secured from Indian Trail Improvement District for a new branch in the Acreage. This project is awaiting the Board of County Commissioners' approval. The Acreage Branch will be the first LEED certified construction by the County. A new branch will also be constructed in Belle Glade near the elementary and middle schools. This will be a joint project between the County and the City of Belle Glade. Construction on these projects will begin in December 2010.

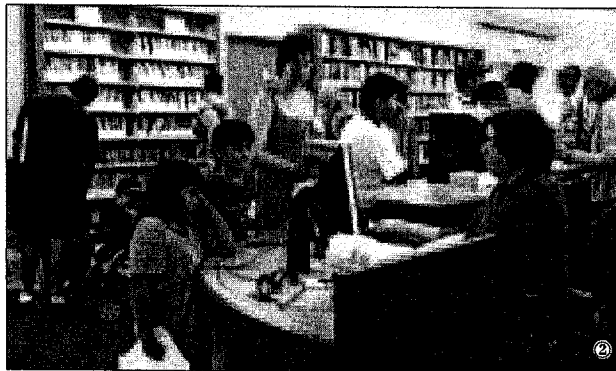
Once all of these projects are completed, every branch in the System will have been updated.

Loula V. York Branch



Minor renovations were planned for Loula V. York Branch in Pahokee, but in October 2005, Hurricane Wilma severely damaged the building and necessitated extensive renovations. The storm destroyed the roof and most of the books and furnishings. A brand new collection including more Spanish materials, a new young adult book collection, CDs, and a larger DVD collection, with books and reading materials for all ages was purchased. When the library reopened in September 2006, patrons and visitors were welcomed to a completely renovated library with a sweeping new entryway, paved parking lot, an attractive meeting room that seats up to 20 people, a comfortable reading area, and a separate area for teens.

Project Cost: \$1,015,471

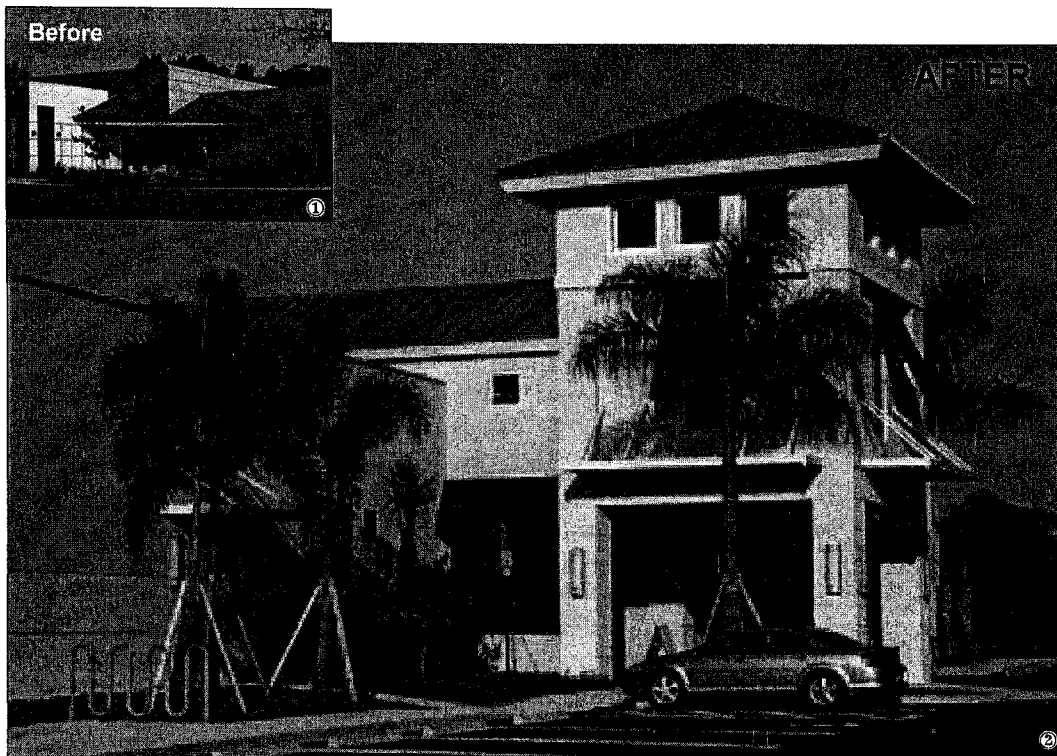


Features

- Completely new collection: over 18,000 books, music CDs and books on CD, videos and DVDs, including an expanded Spanish language section and a new young adult collection.
- Redecorated meeting room: a spacious meeting room, seating up to 20 people in comfortable new chairs.
- Attractive and comfortable reading and work areas.
- Enclosed study room.
- Comfortable, teen-friendly area and inviting Children's Area.
- Increased parking: double the number of parking spaces, all paved, convenient to the building.
- New lighting throughout.



1) The new entrance is attractive and accessible. 2) The library has over 18,000 items for the community to check out including new releases, music CDs, Spanish language materials, and much more. 3) The new Children's Area can accommodate programs like the 2008 Families Reading Together performance of Geddy the Gecko. 4) There are 13 computers available for the public to access the library's catalog, the internet, word processing programs, and the library's electronic resources.

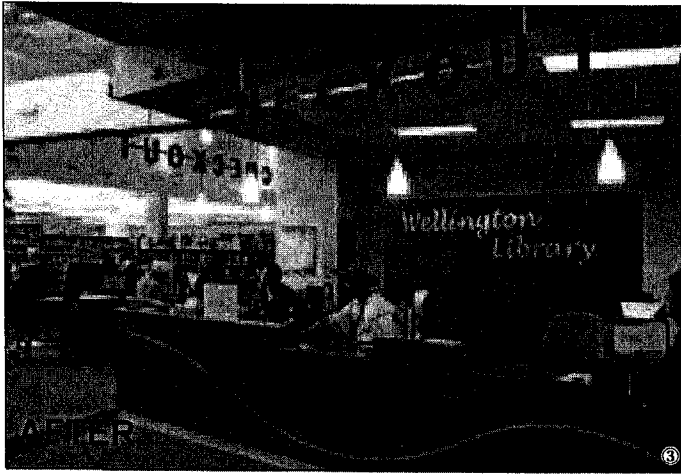


Wellington Branch

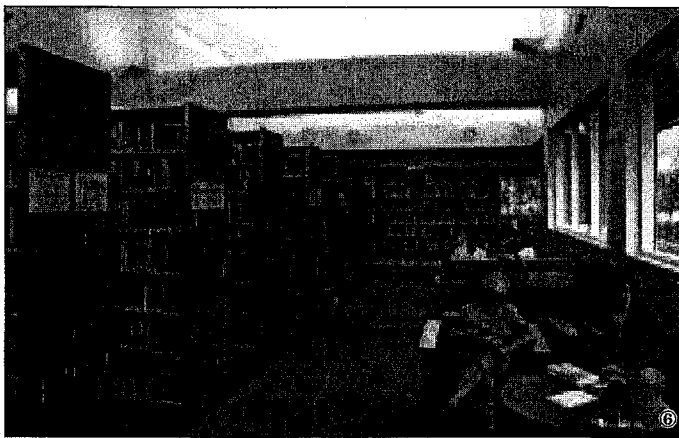
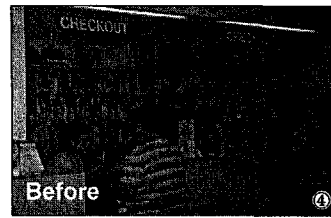
Features

- Increased access to computers: 30 Internet and word processing computers in the adult area; 25 computers in the Children's Area; and five in the Teen Room, in addition to library catalog computers throughout the building. Free Wi-Fi access is provided throughout the Library.
- More meeting room space: three meeting rooms, one for children's programs, one which can accommodate up to 100 people, and a smaller conference room.
- Larger collection: space to house 145,000 volumes.
- Customer service: more staff to provide new and expanded services, including Sunday hours, and express check out stations for fast, efficient service.
- Attractive environment: airy and spacious high ceilings in the common area where the audiovisual and new book collections and the Internet computers are located; comfortable seating with a scenic view in the magazine area.
- Space for young people: a larger, more comfortable, child-friendly area for reading and other children's activities. A separate area for teens with computers, materials, and comfortable seating.
- Parking: 197 parking spaces convenient to the building.

The first major project to be undertaken was the expansion of the Wellington Branch, which began with a groundbreaking ceremony in January 2006. The expansion more than tripled the size of the original building, from 8,000 to 30,000 square feet. The expansion allowed for more materials, three public meeting rooms, additional computers, a café, and a Teen Area. The construction took 18 months to complete and resulted in an airy and spacious building with lots of natural light and a refreshing color palette. The reading room features comfortable chairs



1) The original 8,000 square foot building is now the Children's Area. 2) The new entrance has a covered walkway and outdoor book returns. 3) High ceilings and natural light add warmth to the new building. 4) The original Checkout Desk was redesigned so staff are more accessible to the patrons. 5) A separate Teen Area includes a comfortable seating area, computers, and materials for young adults. 6) The Reading Area, located near a wall of windows, has comfortable chairs and reading tables.



for readers to enjoy a book or magazine overlooking scenic views. Tables with reading lamps and electrical outlets enable patrons to use their laptops to connect to our free Wi-Fi or to spread out and do homework assignments.

The branch also has five study rooms including a larger room for group projects, a large meeting room, a children's story time room, and a small conference room that non-commercial groups can reserve. These larger accommodations

have allowed for many innovative programs including: Wellington's popular "Meet the Author" program which has hosted many best-selling authors including Barbara Taylor Bradford, Tim Dorsey, James Grippando, and Stuart Woods. Youth Services coordinates many creative programs for children of all ages ranging from lapsit story times to tween and teen poetry recitals. These programs are so popular that they are now held in the larger meeting room to accommodate all the registrants.

The branch recently hosted three award-winning authors of books for young people: Jerry Spinelli, author of "Maniac Magee" and "Stargirl;" Patrick Carman, creator of the Land of Elyon and the Atherton series; and James Patterson, author of the "Maximum Ride" and the Daniel X series. Over 400 people were on hand for the program and book signing that followed.

Since reopening, the Wellington Branch has consistently been in the top three branches for circulation.

Project Cost: \$8,013,736

Hagen Ranch Road Branch

The West Atlantic Avenue Branch Library, a 16,500 square-foot building that had originally been a model home, served the West Delray community since 1982. The branch was dark and cramped with low ceilings. In January 2007 construction began less than a mile away on a replacement facility for the outdated branch. The new building, Hagen Ranch Road Branch, is a 34,000-square-foot facility and was the first new construction of the LEP II.

The Hagen Ranch Road Branch, one of the largest buildings in the Library System, opened in July 2008. The contemporary architecture features slanted walls and floor-to-ceiling windows. The high ceilings and abundance of windows give the building a spacious, airy feeling. A large reading alcove overlooking the water features large comfortable chairs where patrons can read magazines and newspapers. A banquette runs along the west wall of windows with reading tables that have electrical outlets for laptop and Wi-Fi usage.

Special features have been added to accommodate the older patrons who frequent the branch. The collection of materials includes an ample selection of large-print books. Wheeled-carts equipped with baskets, similar to those at the grocery store, are available in the lobby. Seating areas are located throughout the building: in the lobby – near the check out desk, in the reading area, and by the magazines so patrons can always find a spot to rest. Benches are provided in the covered drop-off area at the front of the building. Special hearing devices are available for programs in the meeting room. There is even a drive-up book return.

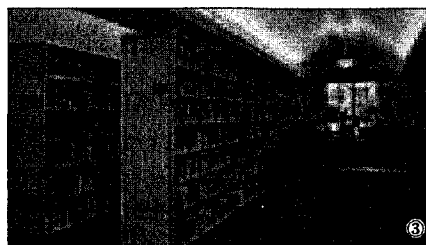
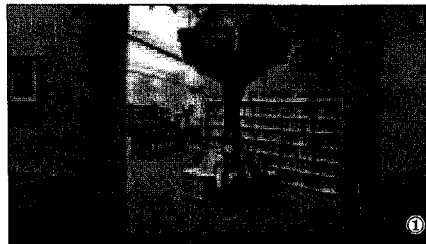
The branch also has amenities that cater to the younger clientele. A large Children's Area and separate teen space have brought more children and young families to the new location. The Children's Area features a forest theme with a whimsical tree-shaped book display. A tree motif highlights the end of each bookshelf. Art featuring wild animals adorns the walls. Paw prints lead the children into the story time room.

Colorful acrylic panels cordon off a separate area dedicated to young adults. Seating, materials, and computers for teens are arranged within this section of the Library.

The branch has five study rooms and three meeting rooms, including a large room that seats 225 people. This meeting room has enabled the Library System to host larger events including Page & Stage, Writers Live!, the Florida Library Youth Program Regional Workshop, and the Friends Annual Meeting with guest speaker Dr. Robert Watson.

Hagen Ranch Road had a 68 percent increase in circulation during the first year it was open and a 12 percent increase in the number of cardholders.

Project Cost: \$12,232,369



1) The Children's Area has a forest theme that is featured in cutouts on the end panels of the bookshelves. 2) The spacious meeting room allows the Library to accommodate the large crowds that attend programs such as the Presidents & Their First Ladies. 3) The Information Desk is visible and easily accessible to patrons. 4) Tables with reading lights are available throughout the branch to allow reading, laptop computer use, and project work. 5) The old West Atlantic Avenue Branch now serves as the Library's storage and warehouse facility. 6) The new branch has a drive up book drop and a covered drop-off area for patrons at the front entrance. 7) Commission Chairman Burt Aaronson cuts the ribbon at the Grand Opening Ceremony on July 12, 2008. 8) Large windows in the computer area provide natural lighting at the 40 computers where patrons can access the Internet, Library catalog, word processing programs, and electronic resources.



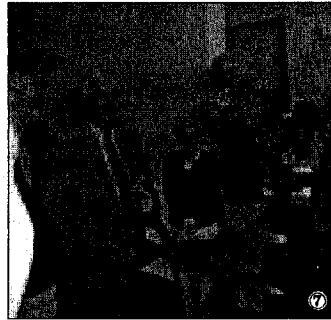
Before



AFTER

Features:

- Increased access to computers: 40 Internet and word processing computers in the Adult Area; eight computers in the Children's Area; and three in the Teen Area. Additional library catalog computers are available throughout the building. Laptop computers are used for training classes in the meeting room. Free Wi-Fi is accessible throughout the building.
- More meeting room space: three meeting rooms – a large room accommodating 225 people; a smaller conference room accommodating 50 people; and a room for children's programming with space for 50.
- More materials: space for 150,000 items including books, CDs, DVDs, magazines, and newspapers.
- Study space: more quiet space including five study rooms.
- Customer service: two express check-out stations for fast, efficient service.
- Space for young people: a themed area with whimsical seating/shelving designed especially for children; ample room for materials and comfortable seating.
- Parking: 213 parking spaces, more than double the number of parking spaces at the previous location; 14 of the spaces are for handicapped parking.
- Accessibility: drive-up materials return, in addition to interior and exterior walk-up returns; wider aisles and lower shelves allow for easier retrieval of items; increased lighting levels incorporating both natural and artificial sources; a covered walkway leading to the entrance and a drop off area.
- Attractive environment: a beautiful natural setting with scenic water views from the reading area; lofty and spacious ceilings; abundance of natural lighting, and comfortable seating areas throughout the branch.



West Boca Branch

The Glades Road Branch has consistently been one of the busiest in the System and has led the other branches in circulation. During the housing boom, many new developments were constructed in western Boca Raton, bringing additional users to the already bustling branch. Expansion of this facility is not possible because there is no vacant land adjacent to the property since the building is situated between Glades Road and a nature preserve. Building upward was considered but the current parking lot could not accommodate any additional vehicles. The solution was to construct a new library on State Road 7 that would serve the new

developments nearby.

The groundbreaking ceremony took place in November 2007 and the Grand Opening in February 2009. The West Boca Branch is a 20,000 square-foot facility that was designed to be expanded to 40,000 square feet. The Mission-style building sits on a large piece of property that may eventually house several other county buildings.

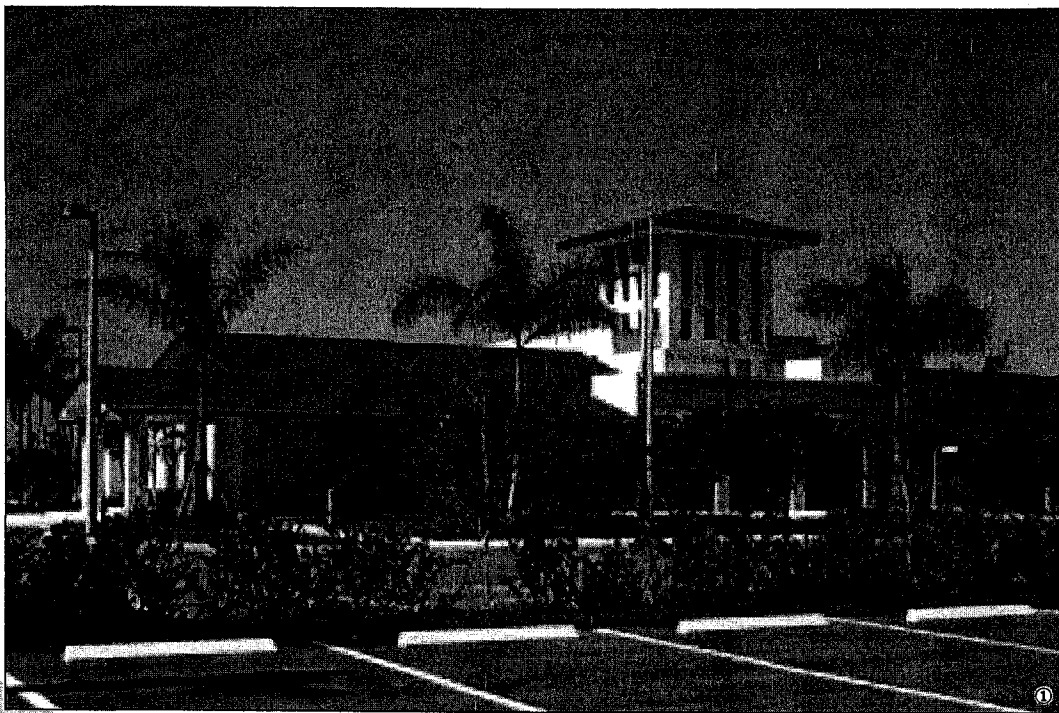
The interior of the building also features Mission-style curved archways and furnishings. The Library has an abundance of natural lighting with a wall of windows in both the adult and children's reading areas. The reading areas offer comfortable

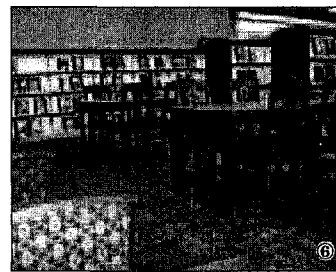
chairs and reading tables equipped for laptop usage. Word processing computers are located in the Information Area and laptops are available for computer classes in the large meeting room.

A large Children's Area includes a story time room, a family restroom, computer stations, project tables, and comfortable seating areas – all designed to accommodate children. There is a separate room for teens with computers, seating, and a collection of materials for young adults.

The branch also has a conference room, four study rooms, including a larger group study room, and a drive-up book return.

Project Cost: \$14,262,553





Features

- The new West Boca Branch is a 20,000 square-foot facility.
- Computer access: 30 Internet and word processing computers in the Adult, Children, and Teen Areas. In addition, library catalog computers are available throughout the building. Laptop computers are available for classes in the meeting room. Free Wi-Fi access is available throughout the building.
- Meeting room space: three meeting rooms – a large room accommodating 70 people, a smaller conference room, and a room for children's programming with seating for 50.
- A variety of materials: new shelving to allow for more DVDs, CDs, and audiobooks.
- Study space: more quiet space, including three private study rooms and a larger group study room.
- Customer service: two express check-out stations for fast, efficient service.
- Space for young people: themed area designed especially for young adults with ample room for materials and comfortable seating.
- Parking: 136 parking spaces.
- Accessibility: drive-up materials return; an exterior walk-up return; wider aisles and lower shelves to allow for easier retrieval of items; increased lighting levels incorporating both natural and artificial sources; a drop-off driveway; and a covered walkway leading to the entrance.
- Attractive environment: beautiful natural setting with scenic views from the reading area; lofty and spacious ceilings; abundance of natural lighting; and comfortable seating areas throughout the branch.



1) The branch has drive-up and exterior materials drop boxes in addition to a covered walkway and drop-off lane. 2) The Children's Program room is equipped with child-size project tables. 3) The Children's Area includes a seating area with an abundance of natural lighting from the wall of windows. 4) The Information Desk and the newly-released hardcover books are directly across from the entrance and easily accessible to patrons. 5) Comfortable seating along the north wall allows patrons to relax and read the newspaper or latest bestseller. 6) Tables and comfortable seating are arranged near the magazine and newspaper shelving. 7) Patrons can sign up in the Information Area to use one of the 30 computers available.

Lantana Road Branch



The Lantana Road Branch is the first branch built to provide library service to an area that previously had only bookmobile service. The Lantana Road Branch is lively and colorful with a floral motif that is based on the flower of the same name – the Lantana. The 29,000 square-foot facility is located on the southwest corner of Lawrence and Lantana Roads.

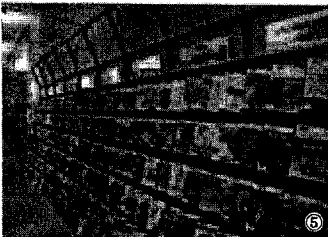
The branch serves a very diverse ethnic, generational, and socio-economic community, including the City of Atlantis and the unincorporated areas of the County west of Lantana and Lake Worth and north and south between Greenacres and Boynton Beach. The community has quickly come to appreciate the new Library.

Most people visit the Library to check out new releases and

DVDs or to use the computers. These items are visible as soon as patrons walk through the door. Shelves and display units give way to a large bank of computer stations. Comfortable seating areas are arranged throughout the building for patrons to enjoy reading a book, magazine, or newspaper. Tables with reading lights and electrical outlets are available for homework and research. There are three meeting rooms – a large room accommodating 115 people, a smaller conference room, and a separate room for children's programs. There are five study rooms, including a larger room for group study.

A separate area is available for young adults with seating, materials, and computers. The





whimsical Children's Area carries the floral theme to a new level: the colorful carpet creates a large flower petal surrounding the Children's Desk which has panels that mimic petals and stems of poppies. The bookshelves have inlaid flowers. Cutouts of dragonflies, bees, and butterflies are displayed on the chair backs. Floral-inspired artwork adorns the walls.

During the first week the branch was open, 943 new library cards were issued.

Project Cost: \$14,806,285

1) The Lantana Road Branch serves an area that formerly only had Library service from the bookmobile. 2) A large group-study room is available for project work. 3) The Children's Area has a bank of computers dedicated for use by children. Additional computers are available in the Teen Area for older kids. 4) Officials from the City of Atlantis join Library Advisory Chair Ellen Winikoff, Commissioner Shelley Vana, and Library Director John Callahan in the official ribbon cutting. 5) Shelving designed for audiovisual materials provides more space and better display of the items available for check out. 6) The high ceilings and natural lighting create an open and airy feeling in the branch. 7) The large meeting room seats over 115 people for programs. 8) The Check Out Desk features two Express Check Out machines for faster service.

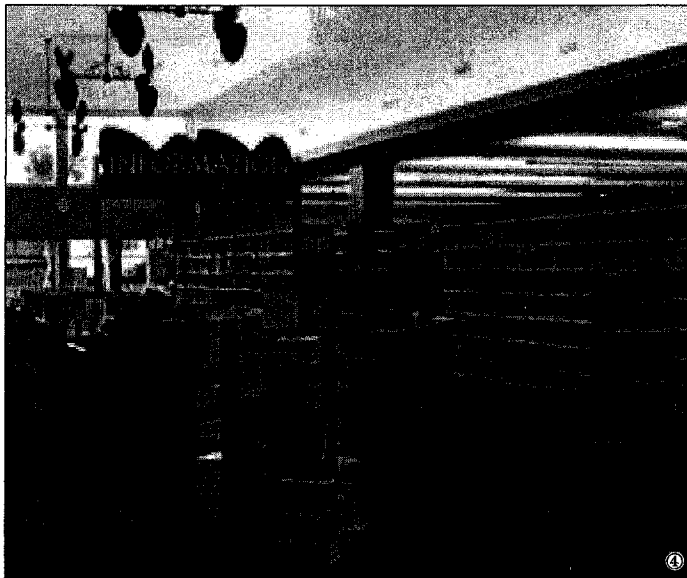
Features

- Computer access: 60 Internet and word processing computers in the Adult, Children, and Young Adult areas; including library catalog computers available throughout the building; laptop computers are available for training in the meeting room; Free Wi-Fi access is available throughout the building.
- Meeting room space: three meeting rooms—a large room accommodating 115 people; a conference room, and a separate room for children's programs.
- A variety of materials: dedicated areas for CDs, DVDs, new arrivals, in addition to books, newspapers, and magazines.
- Study space: more quiet space, including five private study rooms and a larger group study room.
- Customer service: express check out stations for fast, efficient service.
- Space for young people: themed area designed especially for children with ample room for materials and comfortable seating.
- Accessibility: drive-up materials return; interior and exterior walk-up returns; wider aisles and lower shelves allow for easier retrieval of items; increased lighting levels incorporating both natural and artificial sources; covered walkway leading to the entrance.
- Attractive environment: beautiful natural setting with scenic views from the reading area; study carrels; and lounge seating areas throughout the branch.
- Special features include a family restroom with child-sized facilities.

Royal Palm Beach Branch



When the Royal Palm Beach Branch closed in September 2008 for expansion, a stationary bookmobile was located at the Mid-County Center near the branch to provide service to the residents of Royal Palm Beach. The 18-month construction project more than doubled the size of the old branch, from 8,000 square feet to 20,000 square feet.



The interior design has a British-Colonial ambience with dark wood shelving, wooden paddle fans, leather reading chairs, and a green, aqua, and gold color palette. The natural wood setting, water views, high ceilings, Plantation shutters, and windows add to the tropical feel of the building.

A large reading area with comfortable chairs is located near windows overlooking the water. Other reading nooks are located throughout the branch.



Tables with reading lamps and electrical outlets allow patrons to use their laptops for the free Wi-Fi connection or to spread out to read the newspaper.

A bank of computer stations provides access to the Internet, word processing software, and the Library's electronic databases.

A large Children's Area includes a story time room, a family restroom, computer stations, project tables, and comfortable seating areas designed to accommodate children. There is a separate enclosed area with computers, seating, and a collection of materials for teens.

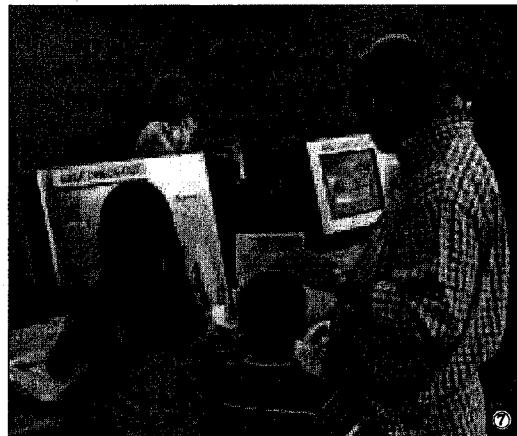
The expansion included the addition of a large meeting room that can seat 72 and three study rooms that provide a quiet place.

Project Cost: \$7,668,060

1) The original entrance to the building is now the staff and delivery entrance. 2) The new entrance is more visible and accessible from Civic Center Way. 3) Royal Palm Beach Mayor David Lodwick, Commissioner Jess Santamaria, Library Advisory Chair Ellen Wnikoff, Library Director John Callahan, and Library Advisory Board members Annie P. Hill, Rosalie Krasnow, and Regis Wenham cut the ceremonial ribbon. 4) The Information Desk and new-book displays greet patrons as they enter the front lobby. 5) Library catalog computers are located throughout the building. 6) The Children's Area has child-sized computer stations. 7) Two Express Check-Out stations are easy for patrons of all ages to use.

Features

- More computers: 36 Internet and word processing computers in the Adult, Children, and Teen Areas; library catalog computers are available throughout the building. Free Wi-Fi available throughout the building.
- More meeting room space: a larger room accommodating 72 people and a separate room for children's programming.
- More materials: new shelving allows for more audiovisual items.
- Study space: more quiet space including three study rooms.
- Space for young people: two separate themed areas, one designed for children and the other for young adults, with ample room for materials and comfortable seating.
- Parking: 112 parking spaces, more than double the previous number.
- Attractive environment: beautiful natural setting; lofty and spacious ceilings; abundance of natural lighting; and comfortable seating areas throughout the branch.



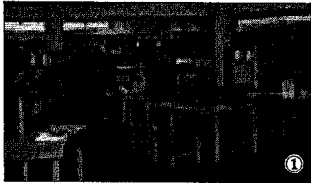
Renovations

Between September 2007 and November of 2008, the Tequesta Branch, the Okeechobee Boulevard Branch, and the Clarence E. Anthony Branch in South Bay were renovated. The Okeechobee Boulevard Branch renovations included a new air conditioning system and roof. The South Bay location also received a new

roof. The remaining renovations, while mostly cosmetic, have truly transformed the environment at these locations. Gone are the institutional white walls and drab carpet. Updated color schemes, with coordinated paint, upholstery fabric, carpeting, and artwork, contribute to the lively environment. Replacing outdated

fixtures with new shelving, designed specifically for audiovisual materials, provides space for additional items. Existing seating and shelving were refurbished and rearranged to give the locations a more open feel. Streamlined computer stations, which take up less floor space, allow for additional computer terminals.

Okeechobee Boulevard Branch



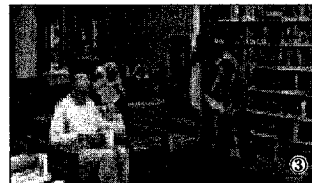
Project Cost: \$2,537,796

Clarence E. Anthony Branch



Project Cost: \$289,604

Tequesta Branch



Project Cost: \$102,664

1) The furniture placement at the Okeechobee Blvd. Branch allows for a direct line of site to Information desk and easy access to the most popular items in the branch including the computers, new releases and DVDs. 2) Streamlined computer carrels opened up floor space so that additional computers are available for the South Bay community to use. 3) A fresh coat of paint, updated upholstery fabric and new artwork created a more inviting Library space where Tequesta residents can read the newspaper.

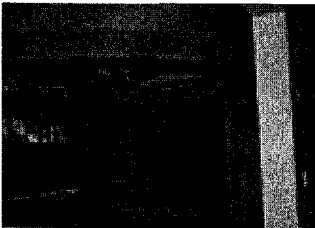
Under Construction



Project Cost: \$12,484,145

Gardens Branch

While the branch is closed Library services are available in a small satellite branch located in the North County Governmental Center – (2nd floor of the Courthouse). Construction to expand the branch from 24,000 square feet to 40,000 square feet began in April 2009. When completed in Summer 2010, the branch will have additional Internet and word processing computers; a refurbished meeting room; new shelving for DVDs, CDs, and audiobooks; dedicated rooms including a group study room; two-themed areas for children and teens; express check out stations; additional parking spaces; drive-up materials return; interior and exterior walk-up returns; and a covered walkway leading to the entrance. Art in Public Places will be incorporated into the Children's Area entrance.



Project Cost: \$4,680,000

Glades Road Branch

The branch closed in February 2008 for renovations. During the renovations patrons have been encouraged to use the new West Boca Branch located on State Road 7 – approximately 2.6 miles away. The renovated branch is scheduled to re-open on May 21, 2010. The renovations to the facility include enlarging the Teen area and reconfiguring the public service desks. The remaining renovations are mostly cosmetic and include an updated color scheme, with coordinated paint, upholstery fabric, carpeting and artwork. Outdated fixtures will be replaced with new audio visual shelving, which provides space for additional materials. Existing seating and shelving will be refurbished and rearranged to give the location an open feel. Streamlined computer stations which take up less floor space will allow for additional computer terminals.

Upcoming Projects



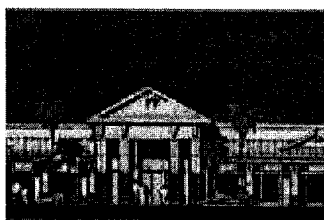
Project Cost: \$3,612,721



Project Cost: \$1,731,255



Project Cost: \$7,210,466



Project Cost: \$17,844,001



Project Cost: \$7,917,005

Greenacres Branch West Boynton Branch

Greenacres Branch Library and the West Boynton Branch Library will be renovated in 2010. The renovations will be mostly cosmetic. The branches will be painted using updated color schemes. Coordinated upholstery fabric, carpeting, and artwork will help create a fresh and inviting environment. Outdated fixtures will be replaced with new shelving that has been designed especially to accommodate more audiovisual materials. Existing seating and shelving will be refurbished and rearranged to give the locations a more open feel. Streamlined computer stations which take up less floor space will allow for additional computer terminals. The Circulation Desks will be reconfigured to house the express check out stations. The Circulation Workroom at West Boynton will also be reconfigured for better workflow and to accommodate automatic sorting machines.

Main Library

The original plan was to build a new Main Library on the vacant land to the east of the current building. Once the estimates for the project came in there was not enough funding in the LEP II projected budget to complete all the projects and build a new Main Library. At one point the entire renovation project at the Main Library had been scrapped. Due to the recent economic situation some completed projects have come in under budget allowing funds for limited renovations at Main. In addition to paint, carpet, and updating some of the furnishings, the current plan calls for relocating the Information Desk and the Teen area, reconfiguring the Circulation Workroom, and adding a much-needed family restroom in the Children's Area. Other improvements include new seating for the meeting room.

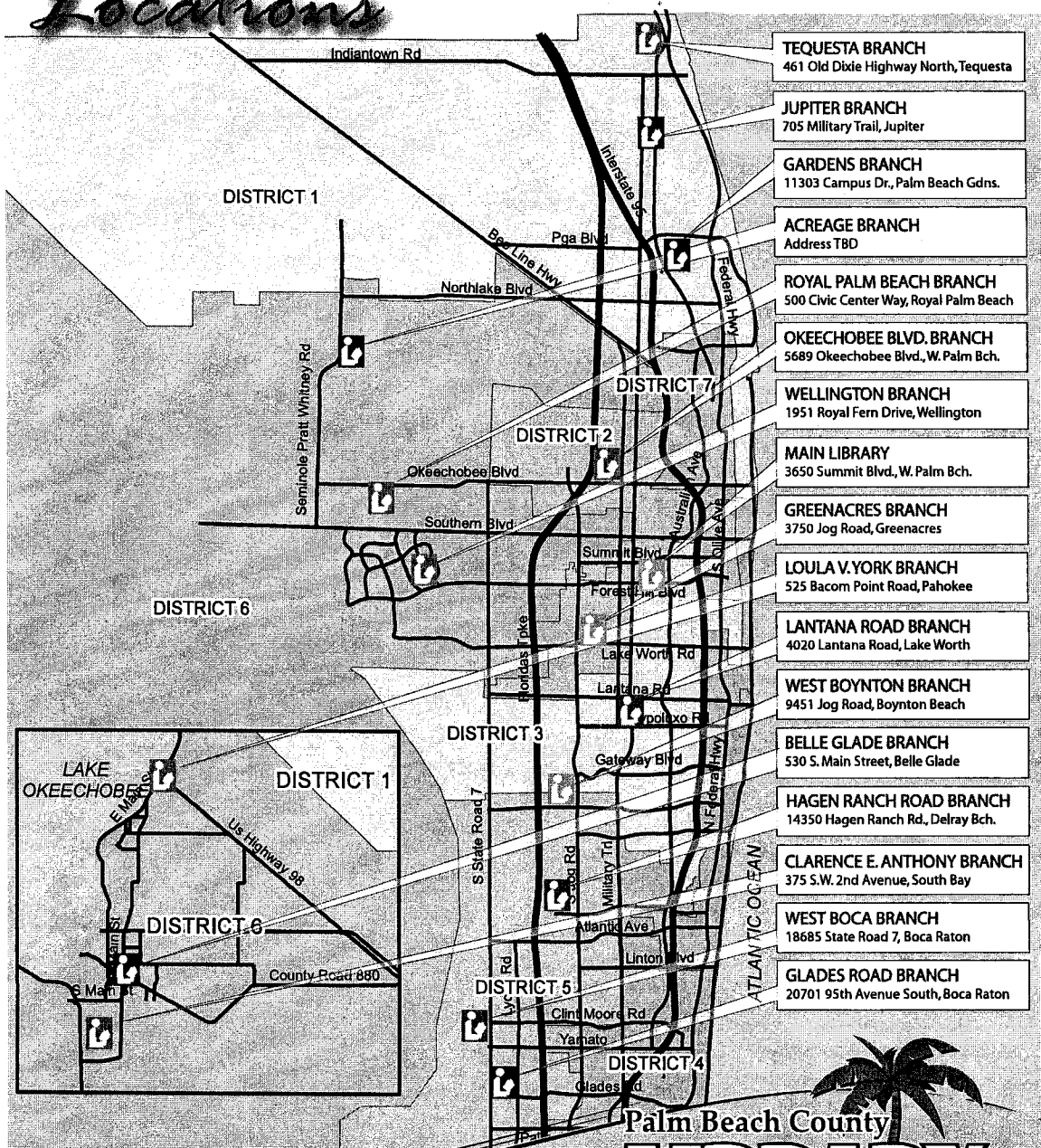
Acreage

A 30,000-square-foot library will be built at the corner of Orange Boulevard and Pratt Whitney Road to provide service to residents in the Acreage. The Library has secured land from Indian Trails Improvement District and is seeking approval from the Board of County Commissioners. The Acreage Branch will be the first LEED construction project by the County. Construction will begin in December 2010. The branch will open in 2012.

Belle Glade


The existing 9,000-square-foot building will be replaced by a new 15,000-square-foot facility located within a residential neighborhood. The proposed site is across the street from Lake Shore Middle School and Belle Glade Elementary School. This is a joint project between the County and the City of Belle Glade. Construction is scheduled to begin in early 2011 and the branch will open in 2012.

Locations



- TEQUESTA BRANCH**
461 Old Dixie Highway North, Tequesta
- JUPITER BRANCH**
705 Military Trail, Jupiter
- GARDENS BRANCH**
11303 Campus Dr., Palm Beach Gdns.
- ACREAGE BRANCH**
Address TBD
- ROYAL PALM BEACH BRANCH**
500 Civic Center Way, Royal Palm Beach
- OKEECHOBEE BLVD. BRANCH**
5689 Okeechobee Blvd., W. Palm Bch.
- WELLINGTON BRANCH**
1951 Royal Fern Drive, Wellington
- MAIN LIBRARY**
3650 Summit Blvd., W. Palm Bch.
- GREENACRES BRANCH**
3750 Jog Road, Greenacres
- LOULA V. YORK BRANCH**
525 Bacorn Point Road, Pahokee
- LANTANA ROAD BRANCH**
4020 Lantana Road, Lake Worth
- WEST BOYNTON BRANCH**
9451 Jog Road, Boynton Beach
- BELLE GLADE BRANCH**
530 S. Main Street, Belle Glade
- HAGEN RANCH ROAD BRANCH**
14350 Hagen Ranch Rd., Delray Bch.
- CLARENCE E. ANTHONY BRANCH**
375 S.W. 2nd Avenue, South Bay
- WEST BOCA BRANCH**
18685 State Road 7, Boca Raton
- GLADES ROAD BRANCH**
20701 95th Avenue South, Boca Raton

- | | | | |
|--|------------------------|--|-----------------------|
| | Completed New Facility | | Undergoing Renovation |
| | Completed Renovation | | Planned Construction |
| | Completed Expansion | | Planned Renovation |
| | Undergoing Expansion | | No Scheduled Changes |


www.pbclibrary.org
Dream. Discover. Do.

Palm Beach County Board of County Commissioners
 Burt Aaronson, Chair; Karen T. Marcus, Vice Chair; Jeff Koons,
 Shelley Vana; Steven L. Abrams; Jess R. Santamaria; Priscilla A. Taylor

