

PALM BEACH COUNTY
BOARD OF COUNTY COMMISSIONERS

AGENDA ITEM SUMMARY

Meeting Date: September 14, 2010 Consent [X] Regular []
Public Hearing []

Submitted By: Water Utilities Department
Submitted For: Water Utilities Department

I. EXECUTIVE BRIEF

Motion and Title: Staff recommends motion to approve: Supplement No.1 to Work Authorization No. 4 (R2009-1293) for South Bay Regional Wastewater Pump Station with Globaltech, Inc. (R2008-2323) providing a 184 day time extension with no change to the Work Authorization price.

Summary: On August 18, 2009, the Board of County Commissioners approved Work Authorization No.4 (R2009-1293) South Bay Regional Wastewater Pump Station with Globaltech, Inc. (R2008-2323) in the amount of \$550,336 for the design and construction of a packaged wastewater pump station to transport wastewater from the decommissioned South Bay Wastewater Treatment Plant to the Glades Utility Authority Wastewater Treatment Plant in Belle Glade. This Supplement No.1 authorizes a time extension of 184 days to allow time for value engineering design changes made to the pump station design to bring the project within budget. It also incorporates time for a delay by the manufacturer in the delivery of the pumping equipment. This Supplement does not change the Work Authorization price. The Small Business Enterprise (SBE) participation goal established by the SBE Ordinance (R2002-0064) is 15.0% overall. This Supplement does not change the overall SBE participation. The cumulative SBE participation, including this Work Authorization, is 75.17% overall. (WUD Project No. 09-041) District 6 (JM)

Background and Justification: After review of the design by the County, value engineering design changes were made which resulted in cost savings so that the project could be constructed within budget. This supplement allows a time extension to provide time for re-design and to provide time to account for delays by the supplier for the delivery of the packaged pumping system, beyond the control of Globaltech, Inc. This Supplement is for a time extension only and does not change the Work Authorization price.

Attachments:

1. Location Map
2. Two (2) Original Supplement No. 1

Recommended By: Bruce Beaman 8/16/2010
Department Director Date

Approved By: Sharon G. Bz 8/22/10
Assistant County Administrator Date

II. FISCAL IMPACT ANALYSIS

A. Five Year Summary of Fiscal Impact:

Fiscal Years	2010	2011	2012	2013	2014
Capital Expenditures	<u>0</u>	<u>0</u>	<u>0</u>	<u>0</u>	<u>0</u>
External Revenues	<u>0</u>	<u>0</u>	<u>0</u>	<u>0</u>	<u>0</u>
Program Income (County)	<u>0</u>	<u>0</u>	<u>0</u>	<u>0</u>	<u>0</u>
In-Kind Match County	<u>0</u>	<u>0</u>	<u>0</u>	<u>0</u>	<u>0</u>
NET FISCAL IMPACT	<u>0</u>	<u><i>*See below</i></u>	<u>0</u>	<u>0</u>	<u>0</u>
# ADDITIONAL FTE POSITIONS (Cumulative)	<u>0</u>	<u>0</u>	<u>0</u>	<u>0</u>	<u>0</u>

Budget Account Nos.:	Fund	Dept	Unit	Object
----------------------	------	------	------	--------

Is Item Included in Current Budget?	Yes	X	No
-------------------------------------	-----	----------	----

Reporting Category **N/A**

B. Recommended Sources of Funds/Summary of Fiscal Impact: N/A

- No Fiscal Impact

C. Department Fiscal Review: 1/2 Sept

III. REVIEW COMMENTS

A. OFMB Fiscal and/or Contract Development and Control Comments:

Agenda is time extension only

OFMB

In I Jan 81

Contract Development and Control

This item complies with current County policies.

B. Legal Sufficiency:

Legal Sufficiency: _____
[Signature] 8/18/10
 Assistant County Attorney

C. Other Department Reviews:

Department Director

This summary is not to be used as a basis for payment.

7/11/2010 1

ATTACHMENT 1 - PROJECT LOCATION



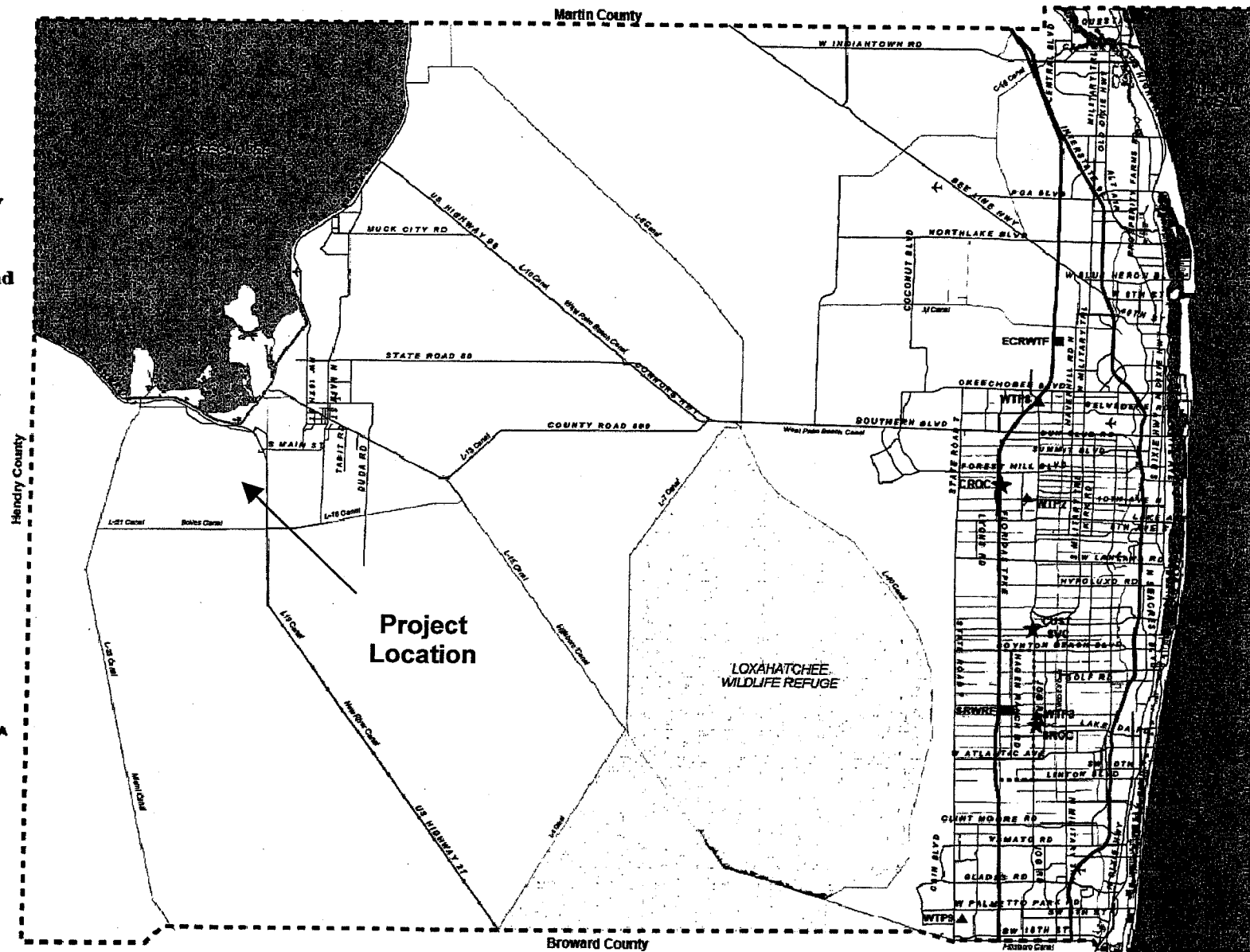
Palm Beach County
Water Utilities
Department
Service Area (SA) and
Major Facilities

Legend

- P.B.C.W.U.D. SA
- MANDATORY RECLAIMED SA
- - - - - COUNTY LIMITS
- ★ Administration
- Water Reclamation Plant
- ▲ Water Treatment Plant
- ① Wetlands



NOT TO SCALE



Project Name WUD # 09-041

WORK SERVICES AUTHORIZATION NO. 4 – SUPPLEMENT 1

Project No. WUD 09-041

Budget Line Item No. 1101-143-1431-8101 BG47F-GY06

1101-143-1431-8101-BG47F-GY07

Project Title: SOUTH BAY REGIONAL WASTEWATER PUMP STATION

District No.: 6

THIS SUPPLEMENT No. 1 to AUTHORIZATION No. 4, to the Contract for Optimization and Improvements Design-Build Services dated December 16, 2008 with an effective date of December 16, 2008 (Optimization and Improvements Design-Build Contract R2008-2323), by and between Palm Beach County and the Design-Build Entity identified herein, is for the Construction Services described in Item 3 of this Authorization. The Contract provides for 75% SBE participation overall. This Authorization includes 0.00% overall participation. The cumulative SBE participation, including this authorization is 75.17% overall.

- 1. DESIGN-BUILD ENTITY: Globaltech, Inc.**
- 2. ADDRESS: 1075 Broken Sound Pkwy NW, Suite 103, Boca Raton, FL 33487**
- 3. Description of Services to be provided by the Design-Build Entity:**

Provide design-build services to construct a regional wastewater pump station at the South Bay Wastewater Treatment Plant. The new pump station will be an in-line pump station that will pump raw wastewater through an existing 10-inch diameter forcemain to the headworks of the Belle Glade Wastewater Treatment Plant.

Supplement 1 to Work Authorization 4 provides for a contract extension of 184 days due to requested changes in project equipment and delays in equipment procurement.

See EXHIBIT "A".

- 4. Services completed by the Design-Build Entity to date:**

See EXHIBIT "B" and "C".

- 5. Design-Build Entity shall begin work promptly on the requested services.**
- 6. The compensation to be paid to the Design-Build Entity for providing the requested services shall be:**

A. Computation of time charges plus expenses, not to exceed \$ N/A

PROJECT NO. 09-041

AUTHORIZATION NO. 4.1

- B. Supplement No. 1 of Work Authorization 4 does not modify the original project fee of \$550,336.00
- 7. This Authorization may be terminated by the County without cause or prior notice. In the event of termination not the fault of the Design-Build Entity, the Design-Build Entity shall be compensated for all services performed through the date of termination, together with reimbursable expenses (if applicable) then due.
- 8. EXCEPT AS HEREBY AMENDED, CHANGED OR MODIFIED, all other terms, conditions and obligations of the Contract dated 12/16/08 with an effective date of 12/16/08 remain in full force and effect.

IN WITNESS WHEREOF, the Board of County Commissioners of Palm Beach County, Florida, has made and executed this Contract on behalf of the said County and caused the seal of the said County to be affixed hereto, and the Design-Build Entity has hereunto set his hand and seal the day and year written. The Design-Build Entity represents that it is authorized to execute this contract on behalf of itself and its Surety.

ATTEST:

SHARON R. BOCK
CLERK AND COMPTROLLER

PALM BEACH COUNTY, FLORIDA, A POLITICAL
SUBDIVISION OF THE STATE OF FLORIDA
BOARD OF COUNTY COMMISSIONERS

By: _____
Burt Aaronson, Chair

APPROVED AS TO FORM AND LEGAL
SUFFICIENCY

APPROVED AS TO TERMS AND
CONDITIONS

Assistant County Attorney

Bevin A. Beaudet, Director
Water Utilities Department

GLOBATECH, INC.

By: _____
Title: President
Florida
(Insert state of corporation)

(Witness signature)

(Witness name printed)

(Witness signature)

(Witness name printed)

(Date of execution)

1075 Broken Sound Pkwy NW, Suite 103
(Design-Build Entity's Official Address)

Boca Raton, FL 33487
(Design-Build Entity's City, State, Zip Code)

(Corporate Seal)

WORK AUTHORIZATION NO. 4 – SUPPLEMENT 1
PALM BEACH COUNTY WATER UTILITIES DEPARTMENT
DESIGN-BUILD SERVICES

SCOPE OF WORK
FOR
SOUTH BAY REGIONAL WASTEWATER PUMP STATION

INTRODUCTION

Palm Beach County (COUNTY) entered into an agreement entitled Contract for Optimization and Improvements Design-Build Services - Palm Beach County Utilities Department Project No. WUD 08-078 (CONTRACT) with. **Globaltech, Inc.** (DESIGN-BUILD ENTITY) to provide design-build services for various general activities on (Reference Document R2008-2323). This Work Authorization will be performed under that CONTRACT.

SCOPE OF SERVICES

This project involves installing a new regional wastewater pump station at the decommissioned South Bay Wastewater Treatment Plant (WWTP). The scope of this project is based on the Preliminary Design Technical Memorandum previously submitted to PBCWUD by Globaltech. The project will be designed and constructed in accordance with the Palm Beach County Minimum Engineering Standard, the Florida Administrative Code 62-604, and the Preliminary Design Report.

The new pump station will be an in-line booster pump station that will pump raw wastewater from the South Bay WWTP, through an existing 10-inch diameter forcemain, to the headworks at the Belle Glade WWTP.

The pump station will be a triplex skid-mounted pump station with variable frequency drive (VFD) centrifugal-style wastewater pumps capable of handling 3-inch solids. The pump station shall be capable of pumping approximately 1,720 gpm at 98 psi. The pumps shall each be approximately 60 HP.

The aluminum or stainless steel skid will be mounted on a pile-supported concrete slab situated such that the pump station will not be damaged by standing water one (1) foot deep on the site (elevation 17 feet). The pump station shall include a bypass line that will allow the existing four (4) feeding pump stations to pump around the new pump station directly all the way to the Belle Glade WWTP when flows are low. The pump station shall operate automatically based on suction side pressure. When the pressure is low, the flow will go through the bypass. As suction side pressure increases an electric valve will actuate and one of the pumps will startup at a low speed. If suction pressure continues to rise the pump speed will increase up to a maximum of 100% speed. If suction side pressure is still high then the second pump will start up in the same fashion. The third pump will function as an in-place spare.

The two feeding lines (10 and 12-inch) will be connected to a new 12-inch suction line. The existing WWTP influent piping and the existing effluent pump station piping will be left in place and valved off. This will allow some of the existing South Bay WWTP facilities to be used for surge storage and the existing effluent pump station to be utilized as a backup, if necessary.

Power will be fed from the existing control building. The existing generator and automatic transfer switch will be reused. A new antenna will be installed on a new 25 foot tall tower to provide remote control from the Lake Region WTP.

New valves and double-wall piping will be installed on the existing diesel fuel tank. The existing propane tank will be removed and the below-grade piping (if any) will be capped. A fence with two double gates will be installed around the pump station area (as depicted in the Technical Memorandum).

Work Authorization 4 was approved by the Palm Beach County Commission on August 18, 2009. A subsequent Notice to Proceed was issued on September 18, 2009 with a scheduled completion date in 190 days (March 27, 2010). This Supplement No. 1 to Work Authorization 4 requests additional time for completion due to changes requested by Palm Beach County and in delays associated with the procurement of equipment for the new pump station. This Supplement does not request to modify the original scope or fee; rather, it provides for a 184 day contract extension to account for the additional services and procurement delays.

Description of Services

Task 1 – Administrative (Modified)

1. Prepare detailed construction schedule to include as a minimum; design modification and review, site mobilization, detailed construction activities, scheduled shut downs and durations, equipment/material delivery times, testing, and startup and commissioning
2. Prepare a pre-purchase specification for the pump skid. The pump station shall be mounted on an aluminum or stainless steel skid and shall include a control panel and the associated breakers, VFDs and controls. The VFDs shall be located in an air-conditioned panel. The VFDs shall operate based on the suction side pressure. Two suction side pressure transducers shall be provided (one serves as a backup). System shall include an Allen Bradley Compactlogix controller module 1769-L32E (preprogrammed from the packaged pump station supplier) with Panelview 1000 on an Ethernet hub, Microwave Data Systems radio module MDS iNET900/ENI set with RS-232/DF1 asynchronous serial interface and Ethernet. Based on pump skid supplier selected, "Or-Equal" equipment may be substituted. The panel shall include a portable generator connection. Review specification with PBCWUD staff.
3. Prepare submittals (or confirmation of compliance with PBCWUD design standards), administer and track submittal process.
4. Schedule meetings, inspections, and testing with County, South Bay and Belle Glade staff
5. Prepare drawings and permitting applications for FDEP/PBCHD permits. The fee for the FDEP/PBCHD permit is included in this Work Authorization.
6. Prepare a permitting letter for PBCERM for the new fuel tank piping. Our understanding is that there is no fee associated with this letter notification. The City of South Bay will be responsible for paying the yearly use fee.
7. Prepare submittal drawings and submit materials to South Bay for building permits. Our understanding is that there is no fee for the building permit.
8. Prepare record drawings.

9. Prepare O&M manuals.

During the design process, PBCWUD staff changed some of the design requirements, most notably, the VFD was changed from an air conditioned unit to a non-air conditioned heat-rated unit. These units are not standard and the Engineer subsequently had to meet with PBCWUD and the equipment vendors on several occasions to develop an acceptable VFD package.

The new specification package was sent to multiple suppliers and the resulting quotes were significantly greater than the estimated purchase costs. Several meetings were then conducted with the vendor and PBCWUD to reduce the costs to an acceptable level.

As a result of the equipment modification, the pump skids were not ordered until mid-March 2010 with an anticipated delivery date of July 19, 2010. The resulting equipment changes have resulted in 184 days of project delay. The delay is being requested without compensation to the Design-Build Contractor for the additional effort expended coordinating the modifications.

Task 2 – Construction Services (Not Modified)

1. Establish staging areas with South Bay staff; mobilize to facilities
2. Provide a survey of the area (within the planned pump station fenced area).
3. Expose a section of existing force main piping to confirm DR value.
4. Install the below-grade suction and discharge piping. Below grade piping shall be C-900 PVC, DR shall match existing pipe, but shall be a minimum of DR-18. Below grade fittings shall be restrained joint epoxy-lined DIP.
5. Install auger-cast piles to support the pump slab. Construct the pump slab.
6. Install the pump skid on the slab.
7. Install the above-grade piping, valves and appurtenances. Above grade piping shall be epoxy-lined DIP.
8. Install an antenna to a new 25 foot tall tower to provide remote control and monitoring.
9. Install flow meter and other instrumentation equipment.
10. Install electrical conduits and cabling from the control building to the pump station.
11. Install a chain-link fence with two (2) double gates (as depicted in the Technical Memorandum). Fence shall meet PBCWUD standard and shall be black vinyl-coated with three (3) strands of barbed wire.
12. Provide timely reporting of Davis-Bacon wage act supporting documentation as required for grant compliance.
13. Cleanup work area and demobilize from site

Task 3 – Commissioning Services (Not Modified)

1. Schedule vendor startup services with PBCWUD, South Bay and Belle Glade; assist vendor as required
2. Schedule startup and programming services with County staff and programmer.
3. SCADA coordination with County Staff (Staff will perform IFix screen modifications and additions.

ASSUMPTIONS (Not Modified)

1. The proposed contract completion time is exclusive of permit acquisition time
2. County will review all submittals and provide comments within one calendar week and notify Globaltech of status
3. Liquidated Damages may be assessed for up to \$1,000 per day until Substantial Completion and up to \$500 per day from Substantial Completion to Final Completion.
4. The existing generator, automatic transfer switch and fuel tank (other than the valves and piping) are assumed to all be in good working order. No other modifications or repairs are provided in this Work Authorization.
5. Demolition of the existing facilities at the South Bay WWTP is not included.
6. Improvements to the existing control building are not included.
7. Upgrades to the existing South Bay lift stations are not included.
8. An allowance of \$15,000 is included.
9. Davis-Bacon wage rates apply to this project.

COMPENSATION (Not Modified)

Compensation for Work Authorization No. 4 will not exceed the Lump Sum Amount (inclusive of allowances) of \$550,336.00. Attachment A provides the original cost breakdown and fee previously approved for Work Authorization 4.

SCHEDULE (Modified)

Attachment B contains the requested revised project schedule for Work Authorization 4. The revised schedule includes an additional 184 days to account for coordinating the new equipment, negotiating an acceptable fee for the equipment vendor, and the additional time associated with the equipment delivery. The milestone completion schedule is provided in Attachment B. A detailed project schedule is provided following this Work Authorization.

M/WBE PARTICIPATION (Not Modified)

As prescribed under Section 7.5 of the CONTRACT, M/WBE participation is included in Attachment C under this Authorization. The attached Schedule 1 defines the M/WBE participation.

ATTACHMENT – A

Budget Summary (3 Pages)

ATTACHMENT – B

Project Schedule

ATTACHMENT – C

SBE Schedules 1&2

ATTACHMENT – D

Location Map

ATTACHMENT – A (ENGINEERING)
WA #4 - South Bay Regional Wastewater Pump Station
Budget Summary

[illegible]

ATTACHMENT – A (CONSTRUCTION)
WA 4 - South Bay Regional Wastewater Pump Station
Budget Summary

CSI Division	Task Description	Labor Classification and Hourly Rate							Total Labor	Materials	*Sub- Contractor Services
		PRO8	PRO6	PRO6	NEO4	NEO2	T4	Office			
		\$60.00	\$40.00	\$35.00	\$24.00	\$18.00	\$28.00	\$20.00			
1a	Temporary Facilities										
	Container Rental				2				\$48.00	\$0.00	\$375.00
	Sanitary				2				\$48.00	\$0.00	\$225.00
	Trailer		2						\$80.00	\$270.00	\$630.00
	Temp Elect		2						\$80.00	\$100.00	
	Project Sign								\$0.00	\$250.00	
	Jobsite Supplies/Misc								\$0.00	\$143.00	
	Waste Hauling								\$0.00		\$700.00
	Subtotal Div 1a	0	4	0	4	0	0	0	\$256.00	\$763.00	\$1,930.00
1b	General Conditions										
	Submittals		16						\$640.00		
	O&M Manuals		8					4	\$400.00	\$213.00	
	Construction PM		24					4	\$1,040.00	\$213.00	
	Document Production							8	\$160.00		
	Construction Photos			8					\$280.00	\$75.00	
	Permits				4				\$96.00	\$0.00	
	Meetings		8						\$320.00		
	Site Visits/Reveiws			24					\$840.00		
	Pay requests		8						\$320.00		
	Scheduling		20				4		\$912.00		
	Subtotal Div 1b	0	84	32	4	0	4	16	\$5,008.00	\$501.00	\$0.00
2	Sitework/Staging										
	Site Staging/Mobilize		8		8	8			\$656.00		
	Superintendent		32						\$1,280.00		
	Survey				8				\$192.00		\$1,500.00
	Fence				8				\$192.00		\$12,600.00
	Grade Removal			4	4	4			\$308.00		
	Fill/Compaction			16	16	16			\$1,232.00	\$680.00	
	Trenching			16	16	16			\$1,232.00		
	Trench Backfill			8	8	8			\$616.00	\$680.00	
	Asphalt Repair			8	8				\$472.00	\$1,500.00	
	Remove Exst Propane Tank			8	8	8			\$616.00		
	Auger Piles								\$0.00		\$12,400.00
	Restoration			8	8				\$472.00	\$1,000.00	
	Cleanup			8	8	8			\$616.00		
	Subtotal Div 2	0	40	76	100	68	0	0	\$7,884.00	\$3,860.00	\$26,500.00
4	Concrete										
	Concrete Testing			8	8				\$472.00	\$500.00	
	Pump Slab Rebar			16	16	16			\$1,232.00	\$500.00	
	Pump Slab			16	16	16			\$1,232.00	\$1,750.00	
	Misc. Grout			8	8	8			\$616.00	\$750.00	
	Misc Concrete			8	8	8			\$616.00	\$1,000.00	
	Subtotal Div 3	0	0	56	56	48	0	0	\$ 4,168.00	\$ 4,500.00	\$ -
5	Miscellaneous Metals/Supp/Fstnrs										
	Pipe Supports				8	8			\$336.00	\$3,000.00	
	Instrument Supports				8	8			\$336.00	\$1,750.00	
	Unistrut				4	4			\$168.00	\$720.00	
	Unistrut Acc				4	4			\$168.00	\$120.00	
	Anchors				4	4			\$168.00	\$750.00	
	Subtotal Div 5	0	0	0	28	28	0	0	\$ 1,176.00	\$ 6,340.00	\$ -
9	Finishes										
	Pipe/Equip				8	8			\$336.00	\$530.00	
	Labels/Signage		6		8	8			\$576.00	\$878.00	
	Subtotal Div 9	0	6	0	16	16	0	0	\$912.00	\$1,408.00	\$0.00
11	Equipment										
	Pumps/Controls/VFDs			40	40	40			\$3,080.00	\$180,000.00	
	Subtotal Div 11	0	0	40	40	40	0	0	\$ 3,080.00	\$ 180,000.00	\$ -

ATTACHMENT – A (CONSTRUCTION)
WA 4 - South Bay Regional Wastewater Pump Station
Budget Summary

CSI Division	Task Description	Labor Classification and Hourly Rate							Total Labor	Materials	*Sub- Contractor Services
		PRO8	PRO6	PRO6	NEO4	NEO2	T4	Office			
		\$60.00	\$40.00	\$35.00	\$24.00	\$18.00	\$28.00	\$20.00			
13	I&C										
	Instrumentation										\$20,000.00
	Programming (TBD)										\$10,000.00
	Subtotal Div 13	0	0	0	0	0	0	0	\$ -	\$ -	\$ 30,000.00
15	Mechanical										
	10" Suction Line Tie-In			4	4	4			\$308.00	\$624.00	
	12" Suction Line Tie-In			4	4	4			\$308.00	\$1,000.00	
	10" Discharge Line Tie-In			4	4	4			\$308.00	\$900.00	
	10" Below Grade Piping Install			8	8	8			\$616.00	\$1,000.00	
	12" Below Grade Piping Install			8	8	8			\$616.00	\$1,100.00	
	Pipe/Fittings			24	24	24			\$1,848.00	\$35,000.00	
	Install Fuel Tank Piping and reconnect tank										\$10,000.00
	Start Up			40	40	40			\$3,080.00		
	Punch Out			16	16	16			\$1,232.00		
	Subtotal Div 15	0	0	108	108	108	0	0	\$ 8,316.00	\$ 39,624.00	\$ 10,000.00
16	Electrical										
	Energy Efficient Elect										\$50,000.00
	Hillers Electrical Engineering SDC										\$10,000.00
	Subtotal Div 16	0	0	0	0	0	0	0	\$ -	\$ -	\$ 60,000.00
	SUBTOTALS:								\$30,800.00	\$236,996.00	\$128,430.00
	Labor @ Markup (1.36x1.084x1.15)								\$52,218.32		
	Materials @ Markup (1.15)									\$272,545.40	
	Subcontract Services @ Markup (1.1)										\$141,273.00
	PROJECT CONSTRUCTION SUBTOTAL										\$466,036.72
	PROJECT ENGINEERING SUBTOTAL (From previous page)										\$58,508.00
	PBC WUD Allowance										\$15,000.00
	PROJECT SUBTOTAL										\$539,544.72
	Bonding (2%)										\$10,790.89
	PROJECT TOTAL:										\$550,336.00

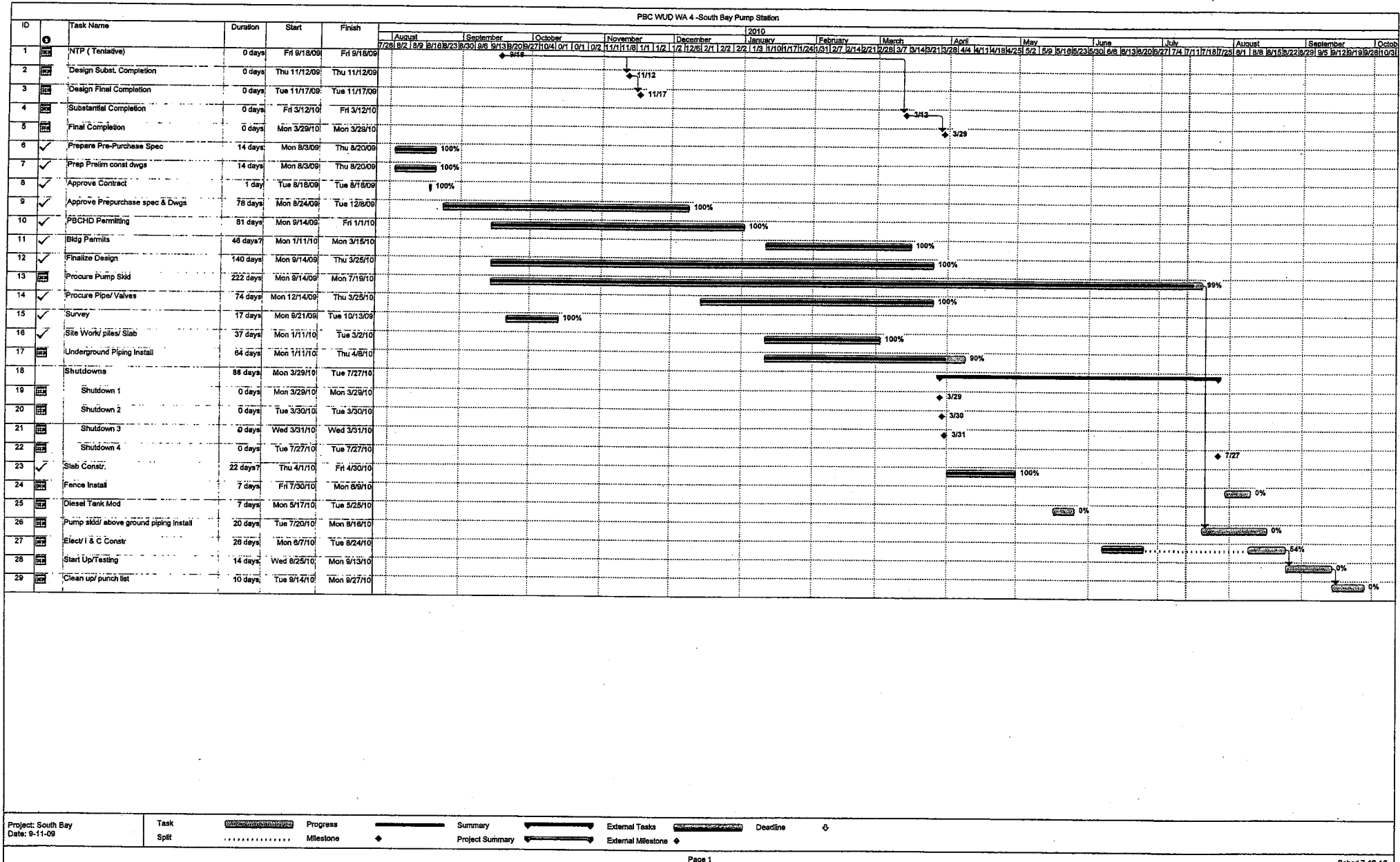
ATTACHMENT - B

PROJECT SCHEDULE

SCHEDULE

The completion dates for this work will be as follows (starting from DESIGN-BUILD ENTITY'S receipt of Notice-to-Proceed).

<u>Construction Services</u>	<u>Substantial Completion</u>	<u>Final Completion</u>
Engineering	100	NA
Procurement	NA	304
Construction	360	374



ATTACHMENT C

SCHEDULE #1

LIST OF PROPOSED SBE-M/WBE PRIME/SUBCONTRACTORS

PROJECT NAME:	<u>WA#4 South Bay Regional Wastewater Pump Station</u>	PROJECT NUMBER:	<u>WUD 09-041</u>
NAME OF PRIME BIDDER:	<u>Globaltech, Inc.</u>	ADDRESS:	<u>1075 Broken Sound Parkway NW, Suite 103, Boca Raton, FL 33487</u>
CONTACT PERSON:	<u>Paul Gandy, P.E.</u>	PHONE NO.	<u>561-997-6433</u>
BID OPENING DATE:	<u></u>	FAX NO.	<u>561-997-5811</u>
		DEPARTMENT:	<u></u>

PLEASE IDENTIFY ALL APPLICABLE CATEGORIES

Name, Address, Telephone Number of SBE- W/MBE Contractor	(Check one or both Categories)		Dollar Amount				
	Minority Business	Small Business	Black	Hispanic	Women	Caucasian	Other (Please Specify)
Globaltech, Inc.	<input type="checkbox"/>	<input checked="" type="checkbox"/>	\$0.00	\$0.00	\$0.00	\$0.00	\$0.00
PRIME CONTRACTOR TO COMPLETE:	TOTAL:		\$0.00	\$0.00	\$0.00	\$0.00	\$0.00
BID PRICE: <u>\$0.00</u>	Total Value of SBE Participation: <u>\$0.00</u>						

NOTE:

1. The amount listed on this form for a Subcontractor must be supported by price or percentage included on Schedule 2 or a proposal from each Subcontractor listed in order to be counted toward goal attainment.

2. Firms may be certified by Palm Beach County as an SBE and/or an M/WBE. If firms are certified as both a SBE and M/WBE, please indicate the dollar amount under the appropriate category.

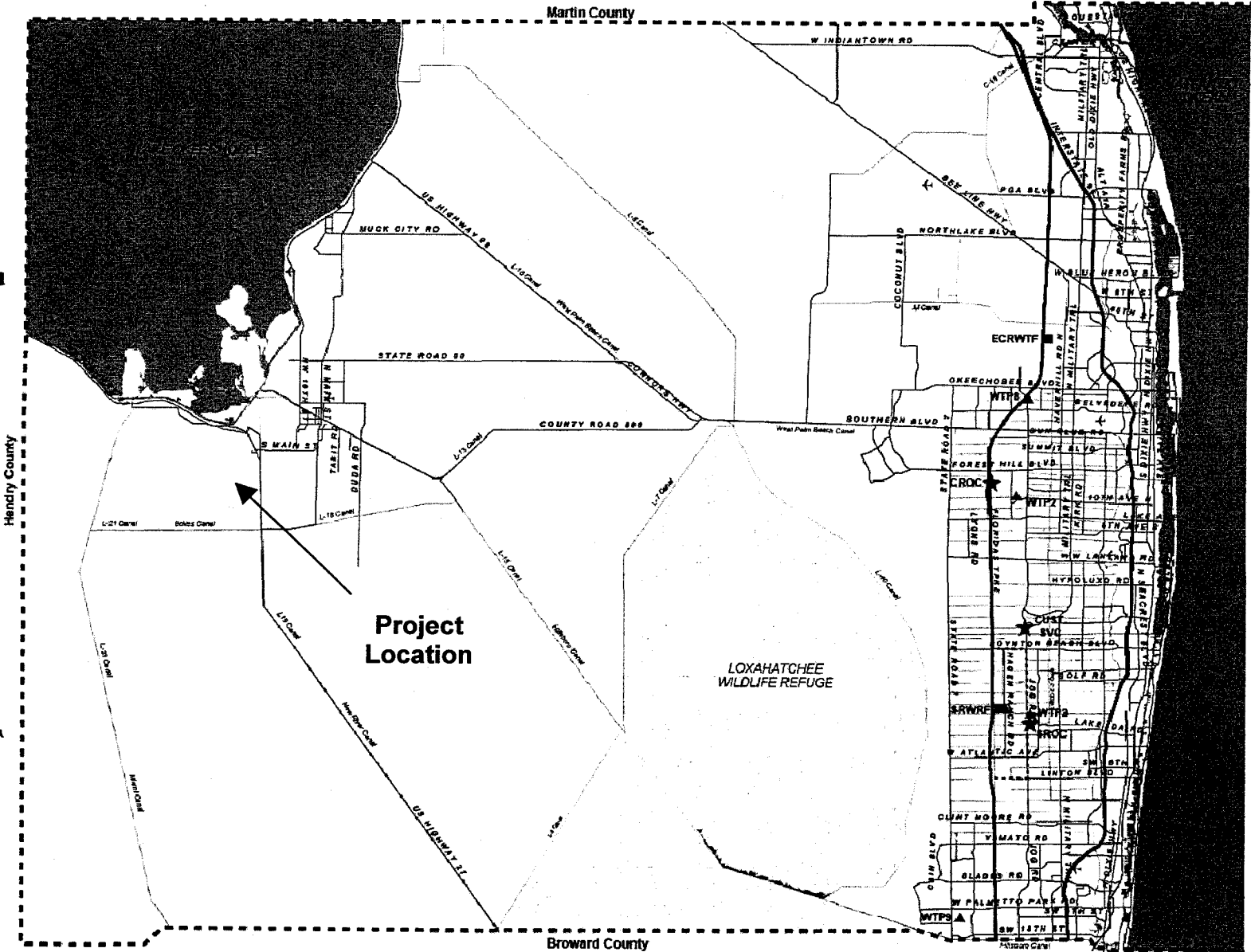
3. M/WBE information is being collected for tacking puposes only.

ATTACHMENT D – PROJECT LOCATION



Palm Beach County
Water Utilities
Department
Service Area (SA) and
Major Facilities

- Legend
- P.B.C.W.U.D. SA
 - MANDATORY RECLAIMED SA
 - - - - - COUNTY LIMITS
 - ★ Administration
 - Water Reclamation Plant
 - ▲ Water Treatment Plant
 - Wetlands



Project Name WUD # 09-041

EXHIBIT - B

AUTHORIZATION STATUS REPORT July 13, 2010 (CONTINUED)

SUMMARY AND STATUS OF REQUESTS FOR AUTHORIZATIONS

Auth. No.	Description	Status	Project Total Amount	Date Approved	WUD No. Assigned	Globaltech Project No.
CONSULTANT SERVICE AUTHORIZATIONS						
CSA-1	Beeline Rechloramination Facility	Approved	\$67,871.00	12/17/2008	09-006	GT 08-20-140
CSA-2	Mangonia Park Elevated Tank Repair/Replacement - Phase 1	Approved	\$35,364.00	12/17/2008	09-032	GT 08-20-141
CSA-3	WTP 10 Membrane Improvements	Approved	\$48,716.00	12/17/2008	08-074	GT 08-20-142
CSA-4	South Bay Regional Pump Station	Approved	\$49,664.00	3/17/2009	09-041	GT 09-20-151
CSA-5	Pahokee WWTP MCC Replacement	Approved	\$49,048.00	3/17/2009	09-039	GT 09-20-152
CSA-6	Belle Glade WWTP Grit Removal	Approved	\$32,698.00	3/17/2009	09-040	GT 09-20-153
CSA-7	Lift Station 5229 Evaluation	Approved	\$30,689.00	3/12/2010	10-032	GT 10-20-186
CSA-8	WTP 3 / SROC DIW Blending	Approved	\$48,858.00	2/14/2010	09-059	GT 10-20-184
	Total CSAs		\$362,908.00			
WORK AUTHORIZATIONS						
WA-1	WTP 3, 9, & SRWRF Hypochlorite I&C Improvements	Approved	\$198,732.00	12/17/2008	08-059	GT 08-20-143
WA-2	WTP 2 SCADA Tower	Approved	\$76,200.00	3/17/2009	08-071	GT 09-20-148
WA-2.1	WTP 2 SCADA Tower Supplement 1	Approved	\$4,599.00	8/3/2009	08-071	GT 09-20-148
WA-2.2	WTP 2 SCADA Tower Supplement 2	Approved	\$2,373.00	9/21/2009	08-071	GT 09-20-148
WA-3	WTP 2 Hypochlorite Improvements	Approved	\$66,887.00	3/10/2009	09-035	GT 09-20-149
WA-4	South Bay Regional WW Pump Station	Approved	\$550,336.00	8/18/2009	09-041	GT 09-20-168
WA-4.1	South Bay Pump Station - Supplement 1	Pending	\$0.00		09-041	GT 09-20-168
WA-5	Pahokee WWTP MCC Replacement	Approved	\$192,625.00	5/06/2009	09-039	GT 09-20-155
WA-6	Belle Glade WWTP Grit Removal	Approved	\$235,567.00	9/15/2009	09-040	GT 09-20-171
WA-7	Lake Region Hypochlorite Improvements	Approved	\$137,559.00	7/8/2009	03-169	GT 09-20-167
WA-8	WTP 8 Hypochlorite Improvements	Approved	\$116,443.00	12/16/2009	09-005	GT 09-20-183
WA-9	WTP Wellfield Recharge - Riverbridge	Pending				
WA-10	WTP 10 Membrane Improvements	Approved	\$278,654.00	6/16/2009	08-074	GT 09-20-164
WA-11	Southwest Boca Diversion Pump Stations	Approved	\$164,056.00	8/19/2009	04-218	GT 09-20-172
WA-11.1	SW Boca Diversion PS - Supplement 1	Pending				
WA-12	WTP 2 Backwash Pump Station	Approved	\$190,000.00	4/28/2009	07-134	GT 09-20-156
WA-12.1	WTP 2 Backwash Pump Station - Supplement 1	Approved	\$9,338.00		07-134	GT 09-20-156
WA-12.2	WTP 2 Backwash Pump Station - Supplement 2	Approved	\$21,339.00	2/17/10	07-134	GT 09-20-156
WA-12.3	WTP 2 Backwash Pump Station - Supplement 3	Approved	\$63,093.00	2/25/10	07-134	GT 09-20-156
WA-13	Beeline Rechloramination Facility - Phase 1	Approved	\$194,500.00	2/18/2009	09-006	GT 09-20-147
WA-14	Mangonia Park Elevated Tank	Approved	\$427,636.00	4/7/2009	09-032	GT 09-20-157
WA-15	Hillsboro Wells Level Transmitter Wiring	Approved	\$36,751.00	6/16/2009	09-064	GT 09-20-165
WA-16	Beeline CDC Line Stop at Innovation Drive	Approved	\$13,379.20	4/1/2009	08-083	GT 09-20-154
WA-16.1	Electrical Service for KOB Lift Station	Approved	\$12,182.00	5/20/2009	08-083	GT 09-20-158
WA-17	WTP 3 - Ammonia Piping Modifications	Approved	\$10,207.00	6/16/2009	09-063	GT 09-20-163
WA-18	WTP 10 Train B Membrane Replacement	Approved	\$15,615.00	6/16/2009	09-062	GT 09-20-166
WA-19	WTP 10 Train A Membrane Replacement	Approved	\$14,023.00	9/24/2009	09-077	GT 09-20-174
WA-20	WTP 8 Ferric Chloride System	Approved	\$352,365.00	11/17/2009	07-114	GT 09-20-175
WA-21	Lift Station 5229 Improvements	Pending				
WA-22	Belle Glade Hypochlorite Improvements	Pending				
WA-23	Pahokee Hypochlorite Improvements	Pending				
WA-24	Belle Glade DIW MIT	Approved	\$47,637.00	3/25/2010	10-001	GT 10-20-188
WA-25	WTP 3 Ground Water Rule Improvements	Pending				
WA-26	WTP 9 Ground Water Rule Improvements	Pending				
WA-27	WTP 8 Ground Water Rule Improvements	Pending				
WA-28	WTP 11 Ground Water Rule Improvemente	Pending				
WA-29	Belle Glade Deep Injection Well	Pending				
WA-30	WTP 3 Acid Piping Replacement	Approved	\$59,432.00	5/3/2010	10-043	GT 10-20-193
WA-31	WTP 2 Ground Water Rule Improvements	Approved	\$89,389.00	4/22/2010	10-033	GT 10-20-190
WA-32	WTP 3 Degassifier Permeat Inlet Repair	Approved	\$25,000.00	3/29/2010	10-044	GT 10-20-189
WA-33	WTP 8 Filters 2 & 3 Media Replacment	Pending				
	Total WAs		\$3,605,917.20			
	Total CSAs + WAs		\$3,968,825.20			

Date: 7/13/2010

EXHIBIT - C

AUTHORIZATION STATUS REPORT OPTIMIZATION AND IMPROVEMENTS DESIGN-BUILD CONTRACT

(CONTINUED)

SUMMARY AND STATUS OF
SBE / MINORITY BUSINESS TRACKING SYSTEM
WA-4 - South Bay Regional Wastewater Pump Station - Supplement 1

	Total
Current Proposal	
Value of Consultant Service Authorization	\$0.00
Value of Work Authorization	\$0.00
Value of CSA and WA	\$0.00
Value of SBE Minority Letter of Intent	\$0.00
Actual Percentages	0.00%
Signed / Approved Authorizations	
Total Value of Approved Consultant Service Authorization	\$362,908.00
Total Value of Approved Work Authorization	\$3,605,917.20
Total Value of CSAs and WAs	\$3,968,825.20
Total Value of SBE Signed Subcontracts	\$2,983,381.20
Actual Percentages	75.17%
Signed Authorizations Plus Current Proposal	
Total Value of Approved CSAs Plus Current CSA Proposal	\$362,908.00
Total Value of Approved WAs Plus Current WA Proposal	\$3,605,917.20
Total Value of Approved and Proposed CSAs and WAs	\$3,968,825.20
Total Value of SBE Subcontracts and Letters of Intent	\$2,983,381.20
Actual Percentages	75.17%
GOAL	75%

July 20, 2010

Vincent Riccobono
Construction Services Manager
Palm Beach County Water Utility Dept.
8100 Forest Hill Blvd.
West Palm Beach, FL 33416

Re: South Bay Wastewater Regional Pump Station – WUD No. 09-041
Review of Time Delay

Dear Mr. Riccobono:

The initial schedule for this project was mainly based on delivery time for the pump skid. The pump skid costs and delivery time were based on the recommendations included in the Preliminary Design Technical Memorandum (TM), prepared July 22, 2009.

The Notice to Proceed was issued September 21, 2009 with a Substantial Completion date of March 12, 2010. In early October 2009 the PBCWUD changed some of the design requirements, most notably, the VFD was changed from an air conditioned unit to a non-air conditioned heat-rated unit. These units are not standard and the engineer had to meet with PBCWUD and the vendors several times to develop an acceptable VFD package. There were also a few other control changes from the original TM that resulted in a delay in releasing the specifications.

The prepurchase specifications were sent out on October 23, 2009 and two quotes were received by November 19, 2009. The new quotes showed that these changes resulted in significantly higher purchase costs. It took several meetings with the vendor (Barney's Pumps) and PBCWUD to reduce the costs to an acceptable level. On December 10, 2009 the pump skid was ordered with a tentative delivery date of early April 2010, which is later than the Substantial Completion date. Subsequently, the pump skid shop drawings were denied, mostly due to issues associated with the VFD's and the controls. The revised shop drawings were then submitted on February 19, 2010 with a projected skid delivery date in late-June 2010.

In early May 2010 we were informed by Barney's Pumps, the skid supplier, that the Aurora Pumps had failed their QC check. Apparently there was a crack in the casting and the pumps would have to be recast. Due to this problem Barney's Pumps revised their expected delivery date to early September 2010. We informed Barney's Pumps that the pump delivery was already behind schedule and we stressed that they needed to do everything they could to expedite the delivery.

Barney's Pumps was able to reduce their delivery time and the pump skid was subsequently delivered on July 19, 2010. We now expect to be able to finish the work on site within two (2) months.

"A Design-Build Company"

Note that there have also been some delays associated with obtaining the change order, permits and receiving site information from the City and/or PBCWUD; however, those delays are concurrent with the skid delivery delays.

I hope this letter adequately documents the project delays and supports our proposed Work Authorization Supplement. If you have additional questions, please contact me at (561) 997-6433.

Sincerely,

A handwritten signature in black ink, appearing to read 'D. Schuman', with a long horizontal flourish extending to the right.

David Schuman, P.E.
Senior Project Manager

Cc: Maurice Tobon / PBCWUD
Rick Olson / Globaltech

“A Design-Build Company”

ATTACHMENT NO. 2

LOCATION MAP

Legend

P.B.C.W.U.D. SA

----- MANDATORY RECLAIMED SA

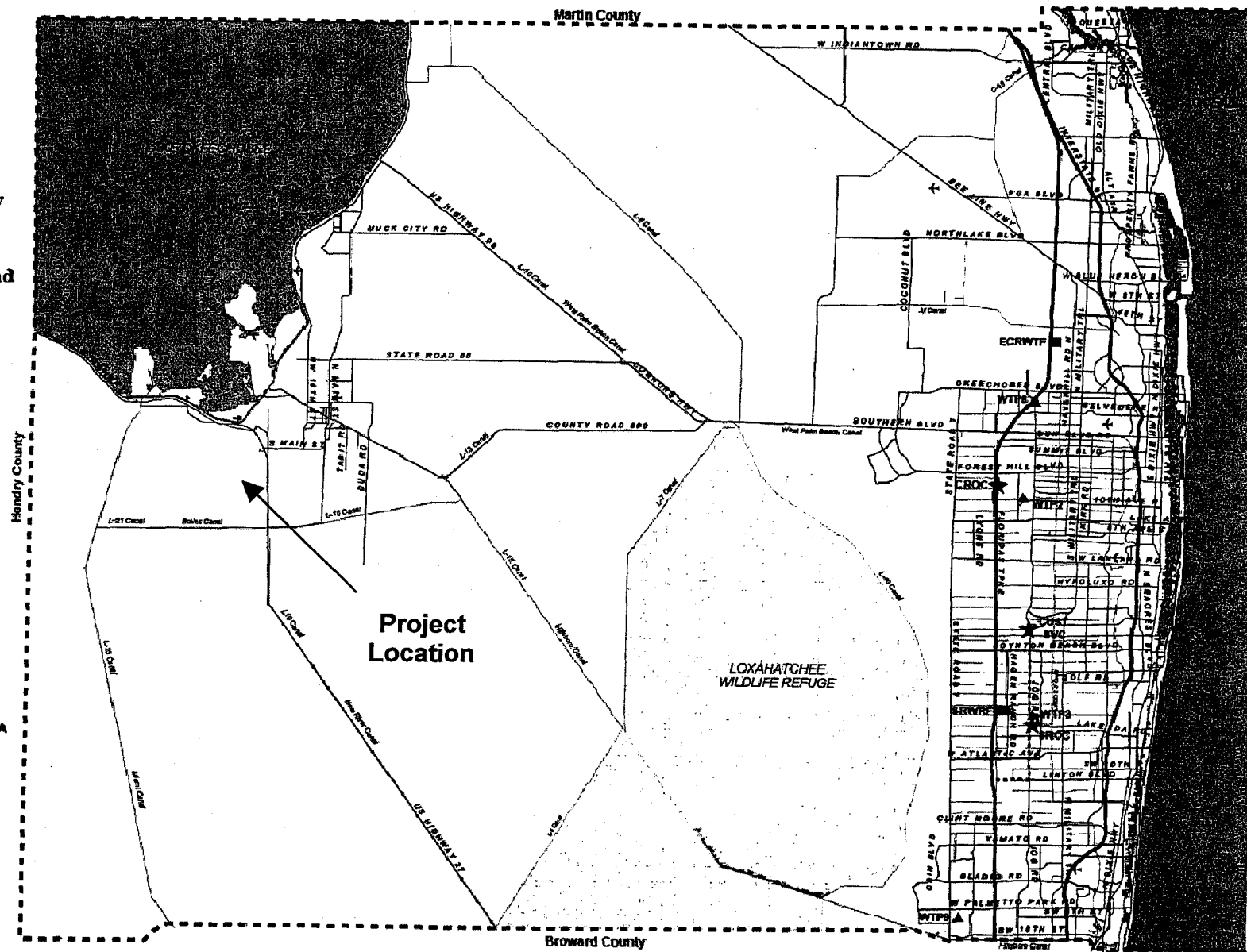
- - - - COUNTY LIMITS

★ Administration

■ Water Reclamation Plant

▲ Water Treatment Plant

① Wetlands



Project Name WUD # 09-041