

**PALM BEACH COUNTY  
BOARD OF COUNTY COMMISSIONERS**

**WORKSHOP SUMMARY**

---

Meeting Date: April 12, 2011

Department: Administration

---

**I. EXECUTIVE BRIEF**

**Title:** Presentation by the Palm Beach County Business Forum.

**Summary:** At the December 21, 2010, Board of County Commissioners (Board) meeting, the Board directed Staff to coordinate a workshop with the local business community to discuss how the public and private sector can work together to create an environment that creates jobs and stimulates the local economy. As a result, Staff reached out to the Business Forum of Palm Beach County in order to achieve representation from all sectors of the business community. Countywide (DW)

**Background and Policy Issues:** The Business Forum of Palm Beach County was established in 2004 to bring business leaders from Palm Beach County together to exchange information and ideas, to promote collaboration on public policy issues, and to act collectively as the voice of business on issues of countywide significance. Their effort is built around the Florida Chamber Foundation's Six Pillar initiative with a focus on prosperity, high paying jobs, vibrant communities, and global competitiveness.

**Attachments:**

*Presentation*

---

Approved by: *Sharon Q. Bryan* 4-7-11  
Assistant County Administrator Date

## II. FISCAL IMPACT ANALYSIS

### A. Five Year Summary of Fiscal Impact:

Fiscal Years	2011	2012	2013	2014	2015
Capital Expenditures	\$0	\$0	\$0	\$0	\$0
Operating Costs	0	0	0	0	0
External Revenues	0	0	0	0	0
Program Income (County)	0	0	0	0	0
In-Kind Match (County)	0	0	0	0	0
NET FISCAL IMPACT	\$0	\$0	\$0	\$0	\$0
No. Additional FTE Positions (Cumulative)	0	0	0	0	0

Is Item Included in Current Budget: Yes N/A No \_\_\_\_\_

Budget Account No:

Reporting Category:

### B. Recommended Sources of Funds/Summary of Fiscal Impact:

### C. Departmental Fiscal Review:

## III. REVIEW COMMENTS

### A. OFMB Fiscal and/or Contract Dev. and Control Comments:

There is no fiscal impact associated with this item.

[Signature] 4/7/11  
OFMB 4/7/11

[Signature] 4/8/11  
Contract Dev. and Control

### B. Legal Sufficiency:

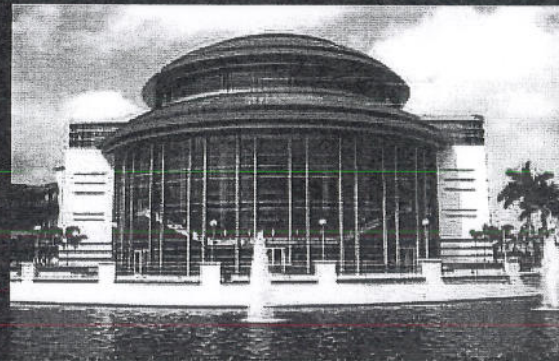
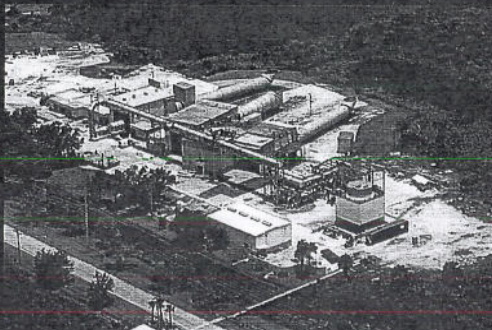
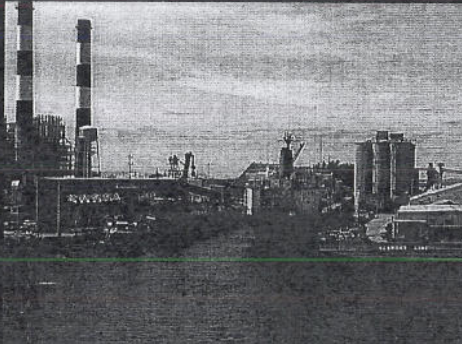
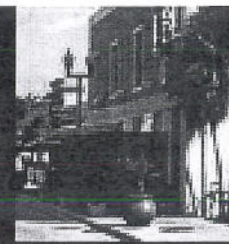
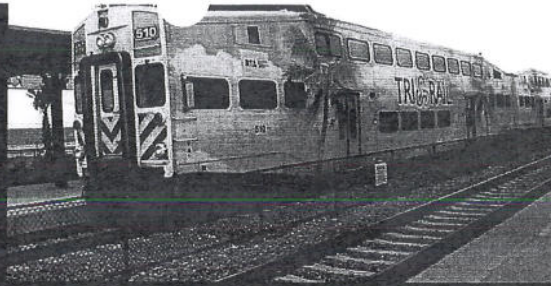
[Signature] 4/11/11  
Assistant County Attorney

### C. Other Department Review:

\_\_\_\_\_  
Department Director

(THIS SUMMARY IS NOT TO BE USED AS A BASIS FOR PAYMENT)





## *A Vision for Palm Beach County's Future*

**Presentation to The Palm Beach County Board of County Commissioners  
by The Business Forum of Palm Beach County  
April 12, 2011**



# Business Forum Member Organizations

- American Institute of Architects, Palm Beach Chapter
- Associated Builders & Contractors, Inc., East Coast Chapter
- Associated General Contractors, Inc. Florida East Coast Chapter
  - Business Development Board
- Chamber of Commerce of the Palm Beaches
- Community & Economic Development Council, Inc.
- The Economic Council of Palm Beach County, Inc.
  - Executive Women of the Palm Beaches
  - Gold Coast Builders Association
- Greater Boca Raton Chamber of Commerce
- Greater Boynton Beach Chamber of Commerce
- Greater Delray Beach Chamber of Commerce
- Greater Lake Worth Chamber of Commerce
- The Hispanic Chamber of Palm Beach County, Inc.
- Housing Leadership Council of Palm Beach County, Inc.
  - The Institute of Real Estate Management
- Jupiter-Tequesta-Hobe Sound Assoc. of Realtors, Inc.
- Lake Okeechobee Regional Economic Alliance of Palm Beach County (LORE)
- Marine Industries Association of Palm Beach County, Inc.
- Northern Palm Beach County Chamber of Commerce
  - Palm Beach Chamber of Commerce
- Palm Beach County Hotel & Lodging Association
- Palm Beach County Medical Society
- Palms West Chamber of Commerce
- Realtors® Association of the Palm Beaches, Inc.
- South Florida Hospital & HealthCare Association
  - Wellington Chamber of Commerce
- Wellington Equestrian Alliance
- World Trade Center Palm Beach

The Business Forum  
of Palm Beach County



# Florida Trend

April 2011

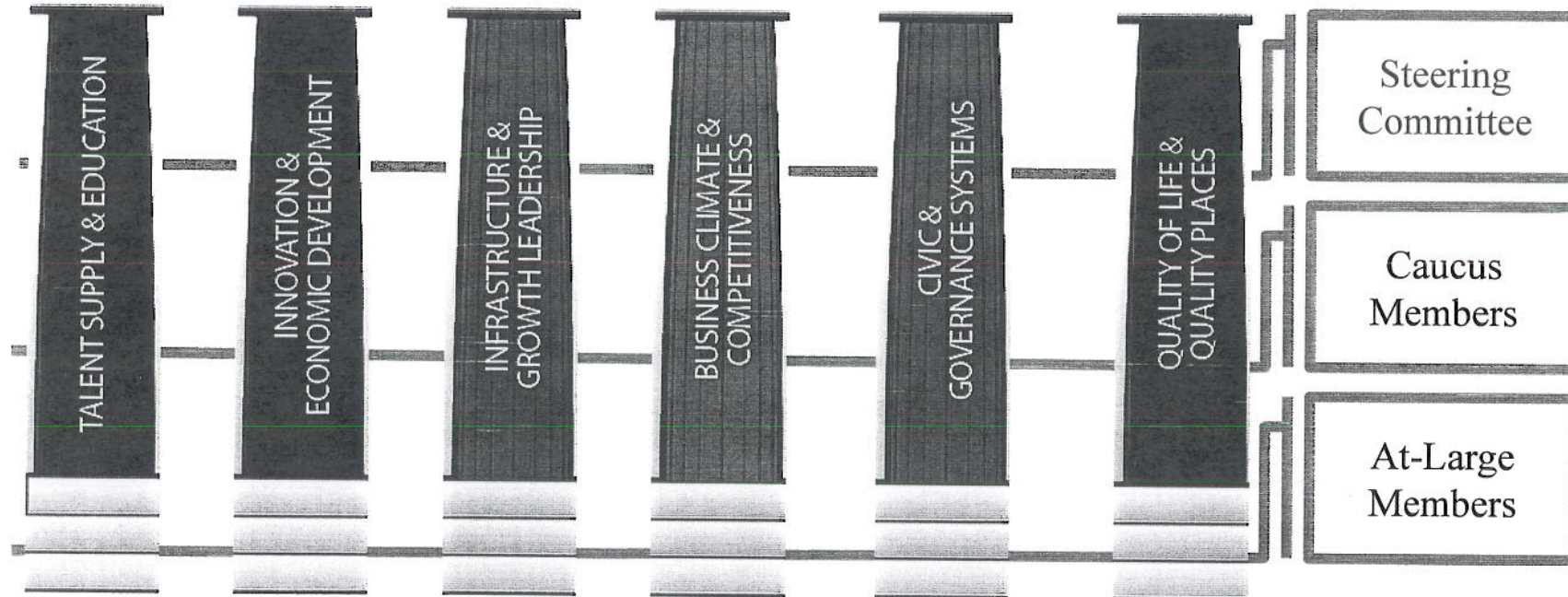
Florida Trend magazine recently published its 2011 Economic Yearbook. Based on interviews, the reporter identified the following as "Palm Beach County Goals":

- "Get more of a return, in the form of jobs and company startups and relocations, on the \$500 million laid out by the state and county to recruit Scripps to Jupiter to jumpstart a life sciences hub in the county.
- "Become one of the first urban counties to implement a local economic strategy framework that mirrors the Florida Chamber Foundation's "Six Pillars."
- "Find ways to match or exceed rival communities in Florida, the Carolinas and Georgia in streamlining governmental approvals for relocating or expanding businesses.
- "Increase exports and imports.
- "Increase outreach to companies in key states, primarily in the Northeast.

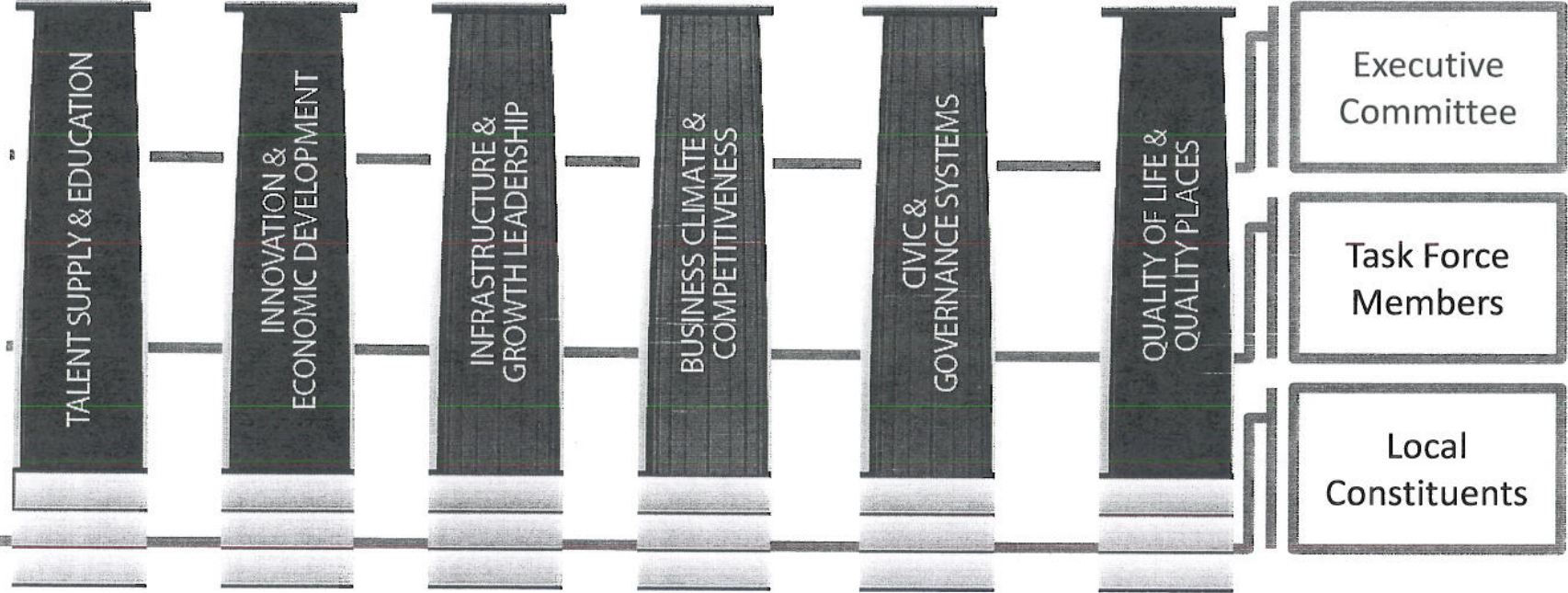
The Business Forum  
of Palm Beach County



# Statewide Six Pillars Caucus System



# Regional / Local Six Pillars Communities





# Six Pillars Communities: Adoption Kit

## 2030 / Launch

(45-60 minutes)

[Large Group]

## Context Map

(50-60 minutes)

[Large Group]

## SPOT Matrix

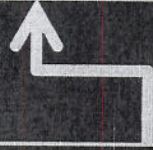
(50-60 minutes)

[Large Group]

## Vision Story

(50-60 minutes)

[Large Group]



## Big Bold Steps

(75-90 minutes)

[Six Separate Sessions

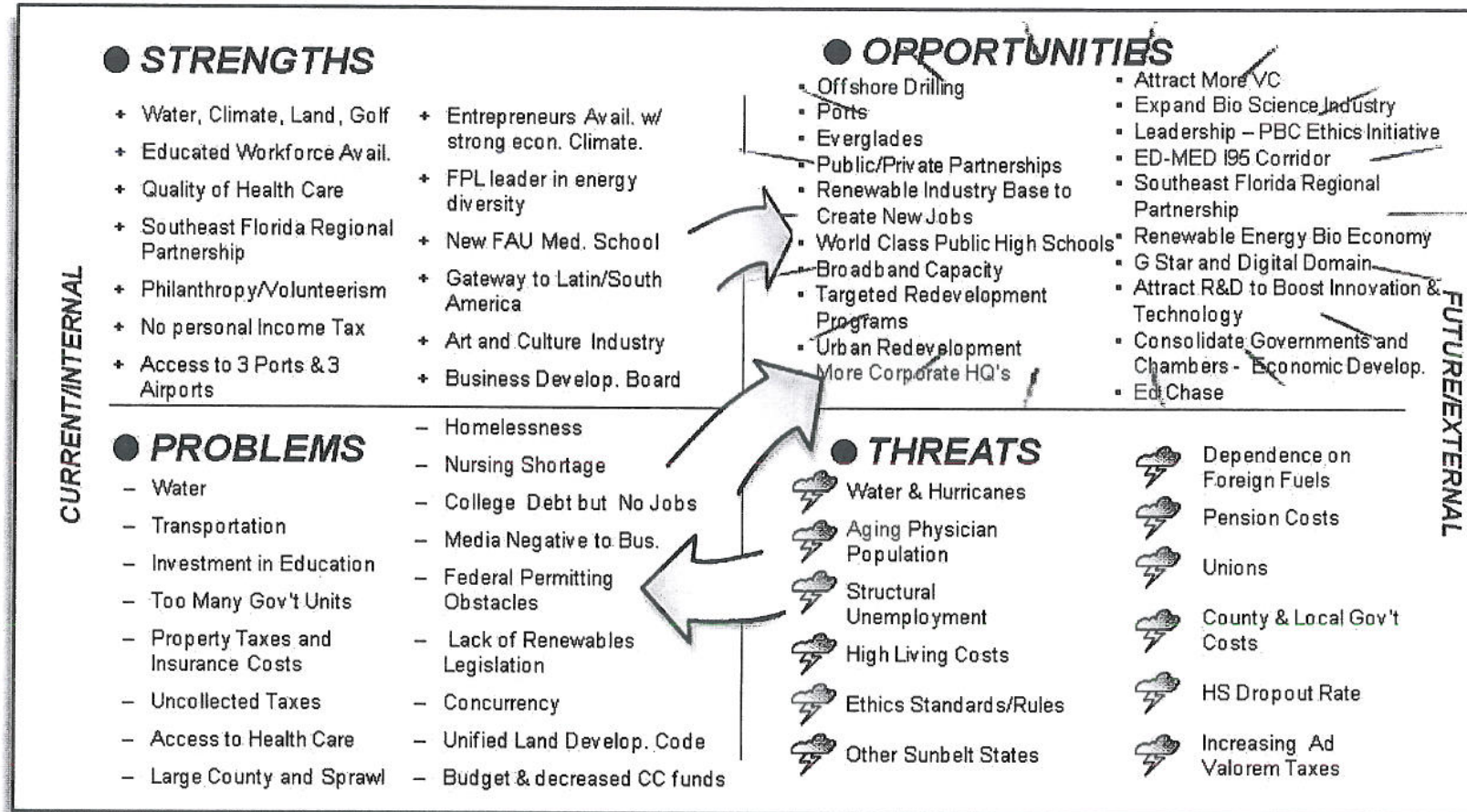
by Pillar]

1. Talent/Education
2. Innovation/Economic Development
3. Infrastructure/Growth Leadership
4. Competitiveness/Business Climate
5. Civics/Governance
6. Quality of Life/Quality Places

The Business Forum  
of Palm Beach County



# SPOT MATRIX PBC





# CONTEXT MAP PBC

## ● TRENDS

- Over-regulation
- Lack of Unified Business Community w/ Common Goals
- No Responsibility-Blame Others
- Public/Private Non-Profit Competitive Duplicity
- Grassroots Organizing
- Growing Distance (Tension) Between Labor & Management
- Ethics Pledge
- Town & Cities-Urban Renewal Underway
- Polarized Media Coverage
- Energy Costs/Dependency (especially oil)

## ● TECHNOLOGY FACTORS

- Social Media
- Varying Access to Technologies

## ● POLITICAL FACTORS

- Polarized Politics/No Bipartisanship
- No account for environmental costs
- Gov't Structure Doesn't Allow for Common Goals/Solutions
- Corruption/Unethical Processes
- Federal Laws (PPACA, ADAAA)
- Regulatory Climate Hinders Business Attraction/Expansion
- Loud Small Interest Groups
- Failure to Think Regional
- No Political Will
- Lack of Cohesive Disaster Preparedness
- No Unified Vision

## ● ECONOMIC CLIMATE

- Want Services but No Taxes
- Unemployment w/ Lack of High Paying Jobs Avail.
- Dependency on Prop. Taxes for Revenue Source
- Tort Reform/Address Legal Fraud
- Fragile, No Business & Lack of Capital
- Real Estate Crisis
- Everglades Restoration
- Lack of Leadership
- Hit Bottom

## ● CUSTOMER NEEDS

- Some Predictability from Gov't Agencies in Labor Matters
- Collaborative Programs to More Efficient Government
- Relevant Education with a Focus on Science, Technology, Math, Engineering
- Value Product/Service Worth Cost Quality
- Training Grants for Job Opportunities
- New Manufacturing Incentives
- Concurrency Management
- Global Competition
- Critical Thinking
- Inland Port

## ● TRENDS

- Aging Skilled Workforce
- No State Investment in art/culture
- High Student Debt
- Decline in Male and Minority College Graduates
- Lack of Economic Skills in Children
- Declining Econ. Opportunities
- Emigration (Natives & Others)
- Increasing Internet Opportunity
- High Cost of Living
- Low Teacher Morale & Pay

## ● UNCERTAINTIES

- School System Uncertainty/Disarray
- Sea Level Rising
- Water

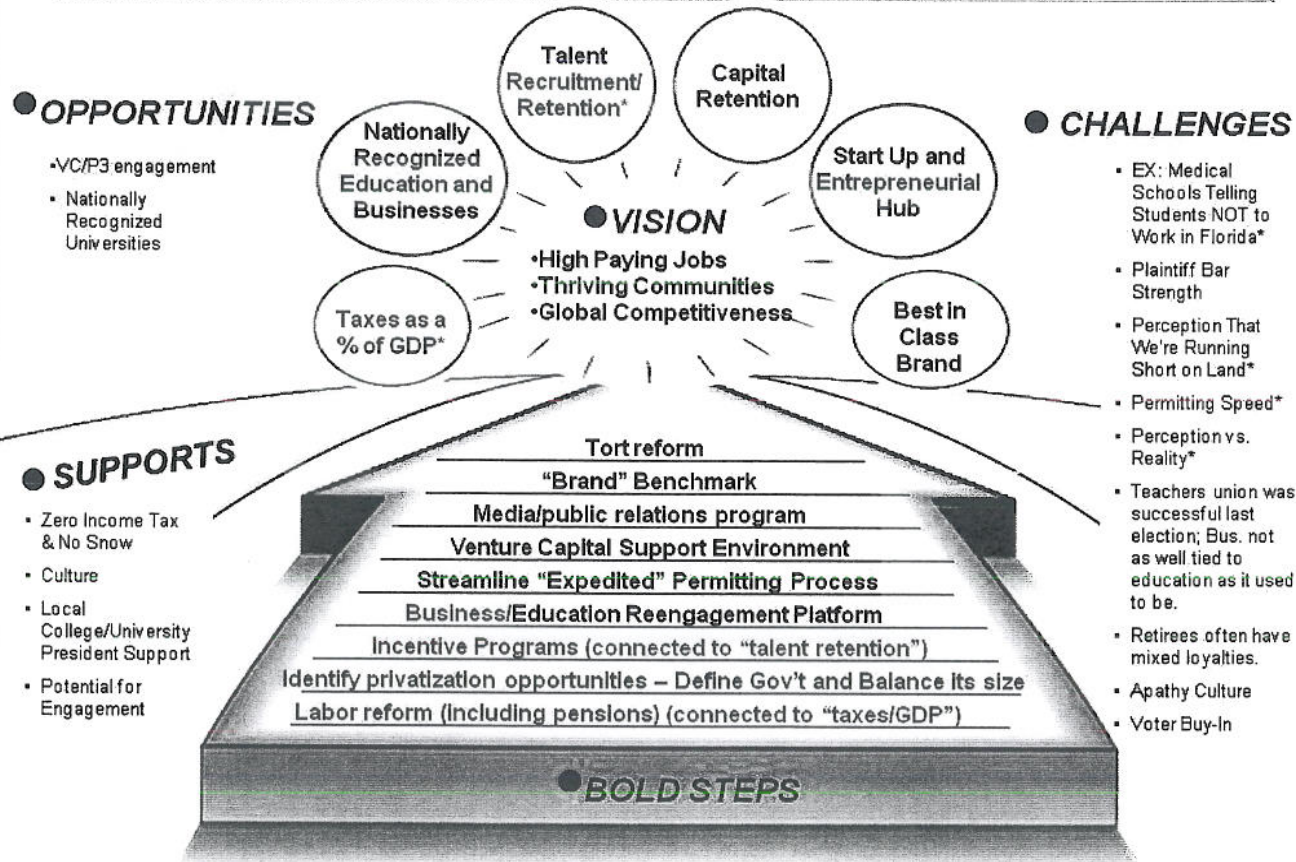
©1996-2009 THE GROVE

The Business Forum  
of Palm Beach County



# SAMPLE - BIG BOLD STEPS

## BIG BOLD STEPS WPB-Business Climate & Competitiveness



The Business Forum  
of Palm Beach County



# Strategic Planning Process

## Milestones / Next Steps

02/10/10	INTRODUCTION		
02/17/11	½ DAY WORKSHOP	9/13/11	Plan Open to Public Comment
03/11	COLLABORATIVE WEB SITE WEB CONFERENCES RESEARCH, ANALYSIS, WRITING	9/20/11	Future of Florida Statewide Forum ➤ Six Pillars Community Best Practices Panel
5/12/11	Goals and Strategies Identified	10/31/11	Plan Released – Official Designation as a Six Pillars Community
THIRD VISIT: PRESENTATION			
7/29/11	First Draft of Strategic Plan		
8/25/11	Revised Plan to Include Tactics	2011 and beyond	
		•	MEASUREMENT / REPORTING
		•	BEST PRACTICES SHARING

The Business Forum  
of Palm Beach County



**THANK YOU!**

The Business Forum  
of Palm Beach County



## APPENDIX



update 3/23/2011

## **Infrastructure and Growth Leadership Task Force**

### ***PROSPECTIVE TASK FORCE MEMBERS***

- 1 **Kerry Kilday** - Urban Design Kilday Studios\*
- 2 **Carla Coleman** - Urban Land Institute\*
- 3 **Tod Mowery** - Cotleur & Hearing\*
- 4 **Aimee Carlson** - Planning Congress\*
- 5 **Pamela Rauch** - Florida Power & Light Company\*
- 6 **Maziar Keshavarz** - Keshavarz & Associates\*
- 7 **Don Hearing** - Cotleur & Hearing\*
- 8 **Monica Manolas** - CEMEX\*
- 9 **Michael Busha** - Treasure Coast Regional Planning Council\*
- 10 **Kevin Ratterree** - GL Homes\*
- 11 **Danny Martell** - Florida Crystals Corporation\*
- 12 **Katherine Waldron** - Waldron & Associates\*
- 13 **Michael Marshall** - Siemon & Larsen, P.A.\*
- 14 **Kathy Salvador** - Florida Power & Light Company\*
- 15 **Geoff Sluggett** - Geoffrey A. Sluggett & Associates\*
- 16 **Ken Tuma** - Urban Design Kilday Studios\*
- 17 **Marty Perry** - Perry & Taylor, P.A.\*
- 18 **Jeremy Susac** - Real Energy Policy Group\*
- 19 **Paul Twitty** - Leo A Daly\*
- 20 **Nader Salour** - Cypress Realty
- 21 **Michael Bornstein** - Town Manager Lantana\*
- 22 **Brian Seymour** - Gunster, Yoakley & Stewart, P.A.\*
- 23 **Rick Gonzalez** - REG Architects\*
- 24 **Reid Hotaling** - Southeast Asset Specialists\*
- 25 **Carl Larsen** - The Bortillid Group, Inc.\*
- 26 **Shannon Larocque** - PBC Administration\*
- 27 **Carlos Berrocal** - Jones, Foster, Johnston & Stubbs, P.A.
- 28 **Bevin Beaudet** - Palm Beach County
- 29 **George Webb** - Palm Beach County
- 30 **Bruce Pelly** - PBIA
- 31 **Manny Almira** - Port of Palm Beach
- 32 **Randy Whitfield** - MPO
- 33 **Michelle Differderfer** - Lewis Longman Walker
- 34 **Rita Craig** - The Craig Group
- 35 **Robert Diffenderfer** - Lewis Longman Walker
- 36 **Suzanne Cabrera** - Housing Leadership Council

\* Completed Application



update 3/23/2011

## **Civic and Governance Systems Task Force**

### ***PROSPECTIVE TASK FORCE MEMBERS***

- 1 **Nat Roberts** - Callery Judge Grove\*
- 2 **Mike Jones** - Economic Council of PBC, Inc.\*
- 3 **Jim Murley** - Florida Atlantic University\*
- 4 **Marty Rogol** - Marketing Concepts, Inc.\*
- 5 **David Baker** - Alley, Maass, Rogers & Lindsay, P.A.\*
- 6 **Cathy McKenzie** - AT&T Florida\*
- 7 **Joshua Escoto** - NextEra Inc., (FP&L)\*
- 8 **Mark J. Burger** - Cherry, Bekaert & Holland, LLP\*
- 9 **Bill Perry** - Gunster\*
- 10 **Christina Morrison Pearce** - Christina Morrison Pearce, PA
- 11 **Jim Watt** - Attorney\*
- 12 **Carl Domino** - Carl Domino, Inc.
- 13 **David Goodllett** - Sugar Cane Growers Coop
- 14 **Beth Kigel** - KBS Strategies\*
- 15 **Tom Lynch** - Plastridge Agency
- 16 **Cliff Hertz** - Broad and Cassel
- 17 **Ken Spillias** - Lewis Longman & Walker, P.A.
- 18 **Iris Scheibl** - Taxpayer Action Board (TAB)\*
- 19 **L Marc Cohn** - Custom Financial LLC\*
- 20 **Sharon R. Bock** - Clerk & Comptroller, Palm Beach County\*
- 21 **Ian Saltzman** - Palm Beach County School Board\*
- 22 **George Gentile** - Gentile Holloway O'Mahoney & Assoc., Inc.\*
- 23 **Ken Adams** - retired County Commissioner
- 24 **Steve Templeton** - Templeton & Co.
- 25 **George Elmore** - Hardrives
- 26 **John R Smith** - BIZPAC
- 27 **Manny Farach** - Richman Greer
- 28 **Phil Blumel** - Raymond James/ US Term Limits
- 29 **Tom Rossin** - Attorney
- 30 **Joe Cardenas** - BankUnited\*
- 31 **Dorothy Jacks** - Palm Beach County Property Appraiser
- 32 **James Beasley** - Beasley Hauser Kramer & Galardi, P.A.
- 33 **John C Csapo** - Kolter
- 34 **Pamela Rauch** - Florida Power & Light Company
- 35 **Shannon Ramsey** - Palm Beach County Clerk's Office

\* Completed Application



update 3/23/2011

## **Business Climate and Competitiveness Task Force**

### ***PROSPECTIVE TASK FORCE MEMBERS***

- 1 Dennis Grady - Chamber of Commerce of the Palm Beaches\***
- 2 Carey O'Donnell - O'Donnell Agency\***
- 3 Troy McLellan - Boca Raton Chamber of Commerce\***
- 4 Ed Chase - Northern Palm Beach County Chamber of Commerce\***
- 5 Don Kiselewski - Florida Power & Light Company\***
- 6 Christine Hanley - Christine Hanley & Associates\***
- 7 Cathy McKenzie - AT&T Florida\***
- 8 Dionna Hall - Realtors® Association of the Palm Beaches, Inc.\***
- 9 Tom Dye - Carlton Fields\***
- 10 Mark J. Burger - Cherry, Bekaert & Holland, LLP\***
- 11 Sharon Bock - Clerk & Controller, Palm Beach County\***
- 12 Brendan Lynch - Plastridge Insurance\***
- 13 Jayne Stroshein-Rousseau - JRS Real Estate Consulting\***
- 14 Michael Malone - Delray Beach Chamber of Commerce\***
- 15 Dr. Laura Tindall - Laura J. Tindall & Co.\***
- 16 Fred Scheibl - Taxpayer Action Board (TAB)\***
- 17 Christopher G. Cothtan - Templeton & Co., LLP\***
- 18 Michael Kohner - WTAS LLC**
- 19 Michael Mitrione - Gunster**
- 20 Nancy Cardone - Jupiter Tequesta Hobe Sound Association of Realtors**
- 21 Nat Nason - Nason, Yeager, Gerson White & Lioce, P.A.**

\* Completed Application

update 3/23/2011

## **Innovation and Economic Development Task Force**

### ***PROSPECTIVE TASK FORCE MEMBERS***

- 1 Kelly Smallridge - Business Development Board\***
- 2 Val Perez - Citi Bank\***
- 3 Fabiola Brumley - Bank of America\***
- 4 Ethel Williams - Florida Power & Light Company\***
- 5 Danny Martell - Florida Crystals Corporation\***
- 6 Michael Marshall - Siemon & Larsen, P.A.\***
- 7 Ronald A. Davis - Hardie Industries, Inc.\***
- 8 John F Flanigan - Haile Shaw & Pfaffenberger\***
- 9 Oren S Tasini - Haile Shaw & Pfaffenberger\***
- 10 William Berger - Greenspoon Marder\***
- 11 Scott Wilson - PNC Bank\***
- 12 Jonathan Low - Preictiv Consulting\***
- 13 A. E. "Bud" Osborne - Sabadell United Bank**
- 14 Nancy Hogan - Nancy L. Hogan Realty and Services**
- 15 Keith O'Donnell - Flagler Real Estate\***
- 16 Dale Gregory - Cherrystone Management Consultants Inc.**
- 17 Gary Hines - Business Development Board\***
- 18 Sherry Howard - PBC Economic Development\***
- 19 Jeff Perlman - Delray Brand Group\***
- 20 Shannon LaRocque - PBC Administration**
- 21 Barbara Perino - leBoffe & Associates**
- 22 Connor Lynch - Plastridge Insurance**
- 23 David Bates - Gunster**
- 24 Keith B Spitz - CBIZ**
- 25 Mark D Montgomery - Celedinas Insurance Group**
- 26 Martin Cass - Alpern Rosenthal**
- 27 Merry Lindberg - Christine Hanley & Associates**
- 28 Michael Malone - Greater Delray Beach Chamber of Commerce**
- 29 Paul Licata - Seacrest Services, Inc.**
- 30 Rita Ullom - Doubletree Hotel**
- 31 Scott Porten - Porten Companies**
- 32 Shaun Blogg - Marcum LLP**
- 33 Steven E Belous - Ernst & Young**
- 34 Veronica McLeod - Wells Fargo Advisors**

\* Completed Application



update 3/23/2011

**Talent Supply and Education Task Force**

***PROSPECTIVE TASK FORCE MEMBERS***

- 1 **Jody Gleason** - Palm Beach County Education Commission, Inc.\*
- 2 **Patrick Franklin** - Urban League of Palm Beach County\*
- 3 **Kathryn Schmidt** - Workforce Alliance\*
- 4 **Steve Parrish** - Broad and Cassel\*
- 5 **Maureen Wilt** - Florida Power & Light Company\*
- 6 **Gary Vonk** - Keiser University\*
- 7 **Michael Busha** - Treasure Coast Regional Planning Council\*
- 8 **Dr. Dennis Gallon** - Palm Beach State College\*
- 9 **Mary Kay Murray** - Education Foundation\*
- 10 **Matt Mercer** - Goldman Sachs
- 11 **Derek Cooper** - Office Depot
- 12 **Rose Bellanca** - Northwood University
- 13 **Bill Fleming** - Palm Beach Atlantic University\*
- 14 **Beth Kigel** - KBS Strategies
- 15 **Amy Botkin** - Bernstein Wealth Management
- 16 **Sean Alveshire** - Stiles Corporation\*
- 17 **Wendy Link** - Ackerman, Link & Sartory\*
- 18 **Michael Kohner** - WTAS Wealth Management\*
- 19 **Ned Shandloff** - BankAtlantic
- 20 **Edmund Capitano** - School District of Palm Beach County\*
- 21 **Chuck Shaw** - School District of Palm Beach County\*
- 22 **Keith Oswald** - School District of Palm Beach County\*
- 23 **Noel Guillama** - The Quantum Group, Inc.\*
- 23 **Ken Montgomery** \*
- 24 **Melody Sanger** - Drug Study Institute\*
- 25 **Edward F. Tancer** - Gunster\*
- 26 **Joe Rooney** - Palm Beach Kennel Club
- 27 **Gary Vonk** - Keiser
- 28 **Steve Craig** - Workforce Alliance
- 29 **Ann Killels** - Leading by Design
- 30 **Danielle Hanson** - Palm Beach Atlantic College
- 31 **Dr. Ian Saltzman** - School District of Palm Beach County
- 32 **Gene Wheeler** - Workforce Alliance
- 33 **Ilene Silber** - Consultant

\* Completed Application



update 3/23/2011

## **Quality of life and Quality Places Task Force**

### ***PROSPECTIVE TASK FORCE MEMBERS***

- 1 Kerry Diaz - Quantum Foundation\***
- 2 Tenna Wiles - Palm Beach County Medical Society\***
- 3 Linda Quick - South Florida Hospital & Healthcare Association\***
- 4 Greta von Unruh - Economic Development Research Institute \***
- 5 Robert Currie - Currie\*Sowards\*Aguila\*Architects\***
- 6 Rena Blades -Palm Beach County Cultural Council\***
- 7 Karen Roberts - Area Agency on Aging\***
- 8 Paul Leone - The Breakers**
- 9 Roger Amidon - Palm Beach County Tourist Development Council**
- 10 Kelly Sobolewski - Bank of America\***
- 11 Jorge Pesquera - Palm Beach County Convention and Visitors Bureau**
- 12 Judy Goodman - Judy Goodman, P.A.**
- 13 Jonathan Satter - WGCompass Realty Companies\***
- 14 Laurel Baker - Palm Beach Chamber of Commerce\***
- 15 Barbara Cheives - Converge & Associates Consulting**
- 16 Don Chester - St. Mary's Medical Center\***
- 17 Chris Roog - Gold Coast Builders Association\***
- 18 Skip Miller - Housing Leadership Council**
- 19 Tana Ebbole - Children Services Council**
- 20 Michael Rodriguez - Criminal Justice Commission**
- 21 Lucy Keshavarz - Arts & Culture Group**
- 22 David Semandi - Hotel & Lodging Association**
- 23 Michael Dyer - Harris Private Bank**
- 24 Verdenia Baker - Deputy County Administrator, Palm Beach County**

\* Completed Application



**ATTENDEES**  
**February 10, 2010 - FEBRUARY 17, 2011**  
**PALM BEACH COUNTY SIX PILLARS WORKSHOP**

**BUSINESS**

**AIA and Marine Industries Assn.**

- Alison Pruitt- Executive Director
- Ed Shea - Manufacturing
- Matthew Carroll – Manufacturing
- Timothy Whipps – Manufacturing

**ABC Contractors Assn**

- Carol Bowen - Government Affairs Director

**Accounting**

- Pete Bozetarnik

**Banking**

- Scott Wilson

**Boca Chamber**

- Troy McLellan – President
- Cheryl Budd
- Glenis Green

**Boynton Beach Chamber**

- Glenn Jergensen- President

**BDB**

- Kelly Smallridge - President
- Gary Hines

**Gold Coast Homebuilders Assn**

- Kevin Ratterree - Construction
- Ray Puzzitiello- Board Chair
- Chris Roog - Government Affairs Director

**Chamber of the PBs**

- Dennis Grady- President

**Citizens for Lower Taxes and a Stronger Economy**

- Brian Seymour- Co-Chair; attorney
- Aimee Carlson - Staff

**Consulting**

- Ilene Silber
- Marty Rogol
- Stan Chamberlin
- Mike Masanoff
- Dale Gregory
- Jonathan Low
- Ken Montgomery
- Katherine Waldron

**Delray Chamber**

- Mike Malone - President
- Beth Johnston - Executive Vice-President

**Florida Chamber of Commerce**

- Mark Wilson - President & CEO

**Florida Chamber of Commerce Foundation, Inc.**

- Dr. Dale Brill – President



**Florida Power & Light Company**

- Pamela Rauch
- Ethel Williams
- Maureen Wilt
- Don Kiseleweski

**Hispanic Chamber of Commerce of Palm Beach County, Inc.**

- Andre Varona - President

**Economic Council of Martin County**

- Tammy Simoneau - President

**Economic Council of Palm Beach County**

- Laurie Silvers - Internet/E-Commerce
- Frank Compiani - Accounting
- Marty Perry - Law
- Christina Morrison Pearce - Real Estate; Institute of Real Estate Management
- John Flanigan - Law
- Trish Lowry - Health Care
- Bryan Rapp - Engineering
- Susie Dwinell - Banking
- Jonathan Satter - Real Estate
- Maziar Keshavarz – Engineering
- Brad Hurlburt- Public TV
- Larry Levine - Retail
- Dolly Champey - Banking
- Evelyn Parkes - Accounting
- Nader Salour - Real Estate Development
- Jim Hutchison - Accounting
- John Clark Bills - Construction
- Beth Kigel - Law
- Philip Blumel - Finance & Investments; U.S. Term Limits President
- Nat Roberts - Agriculture
- Richard Rendina - Real Estate Development
- Judy Goodman - Law
- Martin Cass- Accounting
- Scott McClenegen - Banking
- John R. Smith - Finance & Investments; BIZPAC
- Fabiola Brumley- Banking
- George Elmore- Construction
- Robin Henderson - Banking
- Tom Gibson - Finance & Investments
- Lee Waring - Banking
- Greg Leach – Health Care
- Mike Jones - President & CEO
- Danny Martell
- David Baker – Law
- Wendy Link – Law
- Dr. Rose Bellanca – Education
- Michael Kohner – Wealth Management
- Joe Cardenas – Banking
- Larry Levine – Retail
- William Perry – Law
- Craig Grant – Banking
- Linda Quick - Healthcare

**Economic Development Research Institute (EDRI)**

- Greta Von Unruh

**Lantana Chamber of Commerce**

- Renu Surana

**North PB Chamber**

- Michael Mitrione - Board Chair; attorney
- Nicole Christian- President
- Ed Chase – President

**Palm Beach Chamber**

- Laurel Baker - Executive Director

**PGA Corridor Assn**

- Stephanie Ashley

**Realtors Assn**

- Dionna Brahs - Government Affairs Director
- Kevin Kent - President of the Board
- Jayne Stroshein-Rousseau

**Realtors**

- Maria Marino

**Women's Chamber of Commerce**

- Theresa LaPore

**GOVERNMENT****County Government**

- Shelley Vana - Commissioner
- Bob Weisman- County Administrator
- Sherry Howard - Economic Development
- Shannon LaRocque - Economic Development
- Roger Amidon- Tourist Development Council
- Verdenia Baker – PBC Administration
- Lisa Dela Rionda – PBC Public Affairs Channel 20
- Shannon Ramsey Chessman
- Priscilla Taylor – Commissioner
- Fred Pinto on behalf of Commissioner Santamaria

**Workforce Alliance**

- Kathryn Schmidt - President
- Peter Pignataro- Manager, Performance Analysis
- Steve Craig
- Doug Saenz
- Gene Wheeler
- Steve Parrish
- Paul Hedermam

**Children's Services Council (County-wide Taxing District)**

- Tana Ebbale - President
- Nate Nichols

**League of Cities/City Managers Association**

- Kurt Bressner - Boynton Beach City Manager

**State Legislators**

- Representative Maria Lorts Sachs, Chair of the PB Legislative delegation
- Bobby Powell for Representative Mack Bernard

**Town of Lantana**

- David Thatcher
- Michael Bornstein



**Treasure Coast Regional Planning Council**

- Kim Delaney
- Greg Vaday

**Urban Land Institute**

- Carla Coleman

**CIVIC/CHARITABLE****Community Foundation**

- Leslie Lilly - President
- Slade Sundar- Director of Digital Communications
- Daryl Houston

**Education Foundation**

- Mary Kay Murray - Executive Director

**Palm Healthcare Foundation**

- John Peters

**Quantum Foundation**

- Christine Koehn - Vice President for Programs
- Michele DeLong - Vice President of Finance
- Kerry Diaz

**EDUCATION****Community College/PB State College**

- Dennis Gallon- President
- Dr. Jean Wihbey - Provost of Palm Beach Gardens campus
- Frank Mossadeghi - Professor, Economics
- Dr. Rob Gingras - Associate Dean of Academic Affairs
- Glenn Pate- Associate Professor

**Education Commission**

- Jody Gleason - Executive Director

**FAU**

- Robert Hays - College of Business
- Jim Murley- FAU/FIU Joint Center for Environmental & Urban Problems
- Kimberly Gramm - Adams Center for Entrepreneurship, College of Business
- Joyanne Stephens - Vice President and Associate Provost for Regional Campuses
- Anthony Barber - Trustee
- Terry Gearing - Director of University Relations
- Dr. Ramaswamy Narayanan- Associate VP for Research; Professor of Biological Sciences and Acting Director of the Center for Molecular Biology and Biotechnology
- Stephanie David – Graduate Student

**Keiser University**

- Gary Vonk

**PB Atlantic University**

- William Fleming- VP for Development

**School District**

- Monroe Benaim- Board Chair
- Edmund Capitano
- Ian Saltzman
- MJ Steele
- Beverly Sears
- Keith Oswald
- Greg Hauptner
- Chuck Shaw
- Gary Weidenhamer

### **Other Guests**

- Maria Alonso- Banking
- Kelly Sobolweski - Banking
- Mark Peterson - Banking
- Robert Hochberg – Waste Management
- Jeff Brophy - Urban Planning
- Melody Sanger – Drug Study Institute
- Bob Diffenferfer – Law
- Carlos Berrocal - Law
- Sally Chester
- Reid Hotaling – Land Acquisition
- Iris Scheibl
- Fred Scheibl
- Rick Gonzalez – Architect
- Christine Hanley – Law
- Robert Currie – Architect
- Dodi Glass – Architects
- Noel Guillama
- Carl Larsen
- Michael Marshall
- Bill Nix – Cultural Counsel
- Raphael Clemente – Development
- Ken Tuma
- Kieran Kilday
- Jorge Pesquera – PBC Convention & Visitors Bureau
- Jamie Titcomb – League of Cities
- Mary Ann Stetson – Pools
- Matt Mercer – Wealth Management

### **Media**

- Tim Burke, Editor and Publisher, Palm Beach Post
- Jeff Ostrowski, Business Reporter