

SOUTH FLORIDA WATER MANAGEMENT DISTRICT



## Lower East Coast Water Supply Plan Update Process

Dean Powell, Assistant Department Director

June 21, 2011

## Today's Presentation



- The Lower East Coast region
- What is a water supply plan?
- Why is a water supply plan important to local governments?
- Local government involvement
- Process and Schedule

## Lower East Coast Planning Area

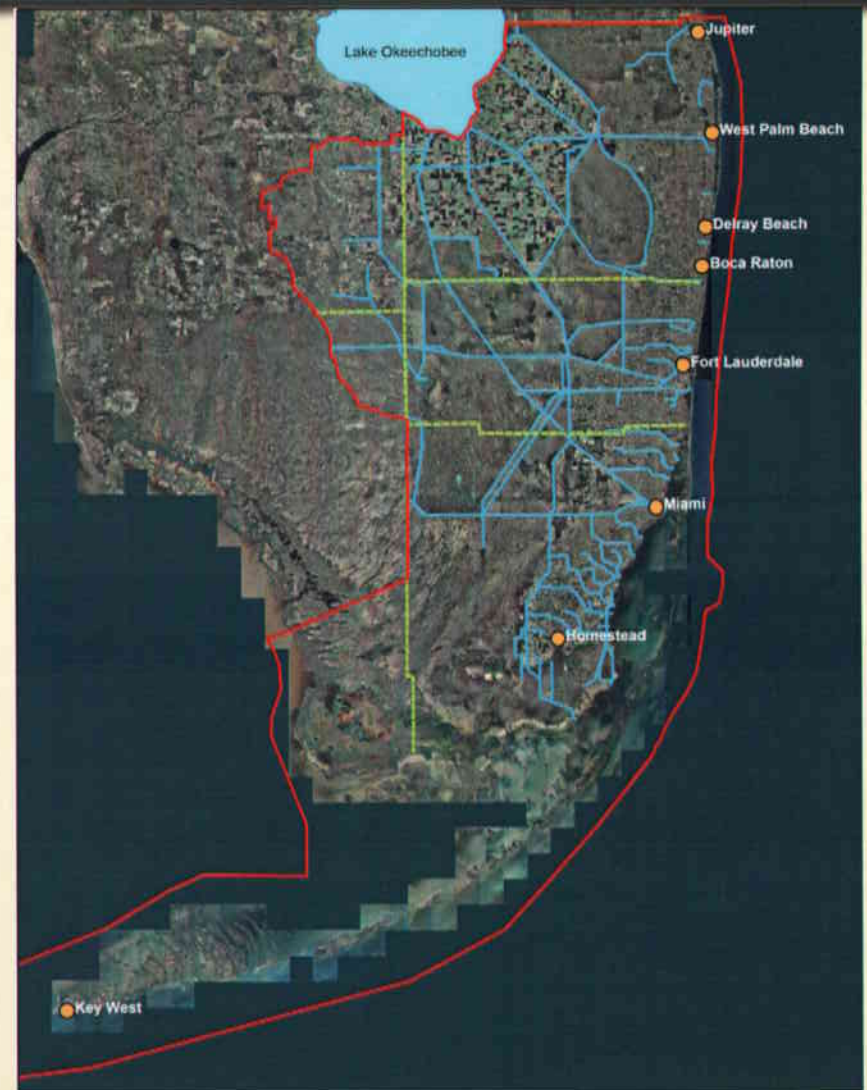
### Includes:

- Palm Beach, Broward, Miami-Dade and Monroe counties
- Eastern Collier and Hendry counties

### Population:

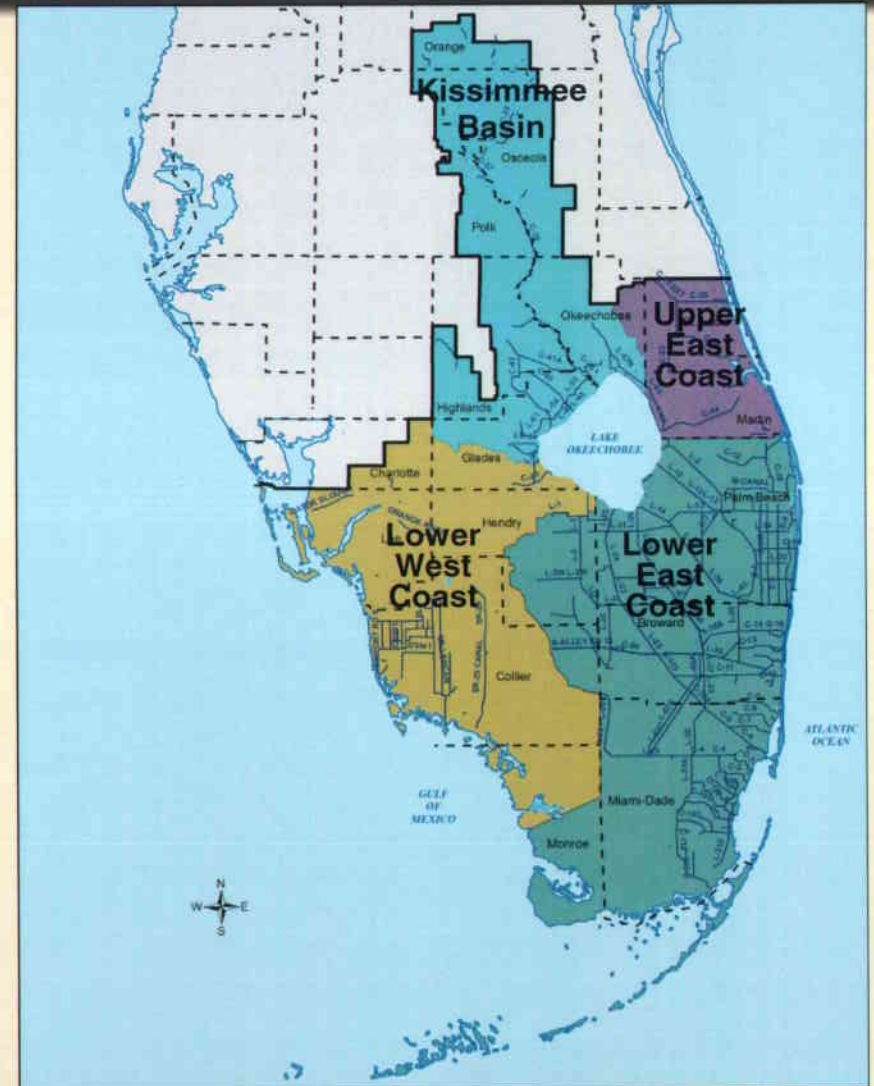
- 2010            5,637,725
- 2000            5,087,577

- 113 local governments
- 53 public water supply utilities
- Major agricultural industry
- Significant environmental features

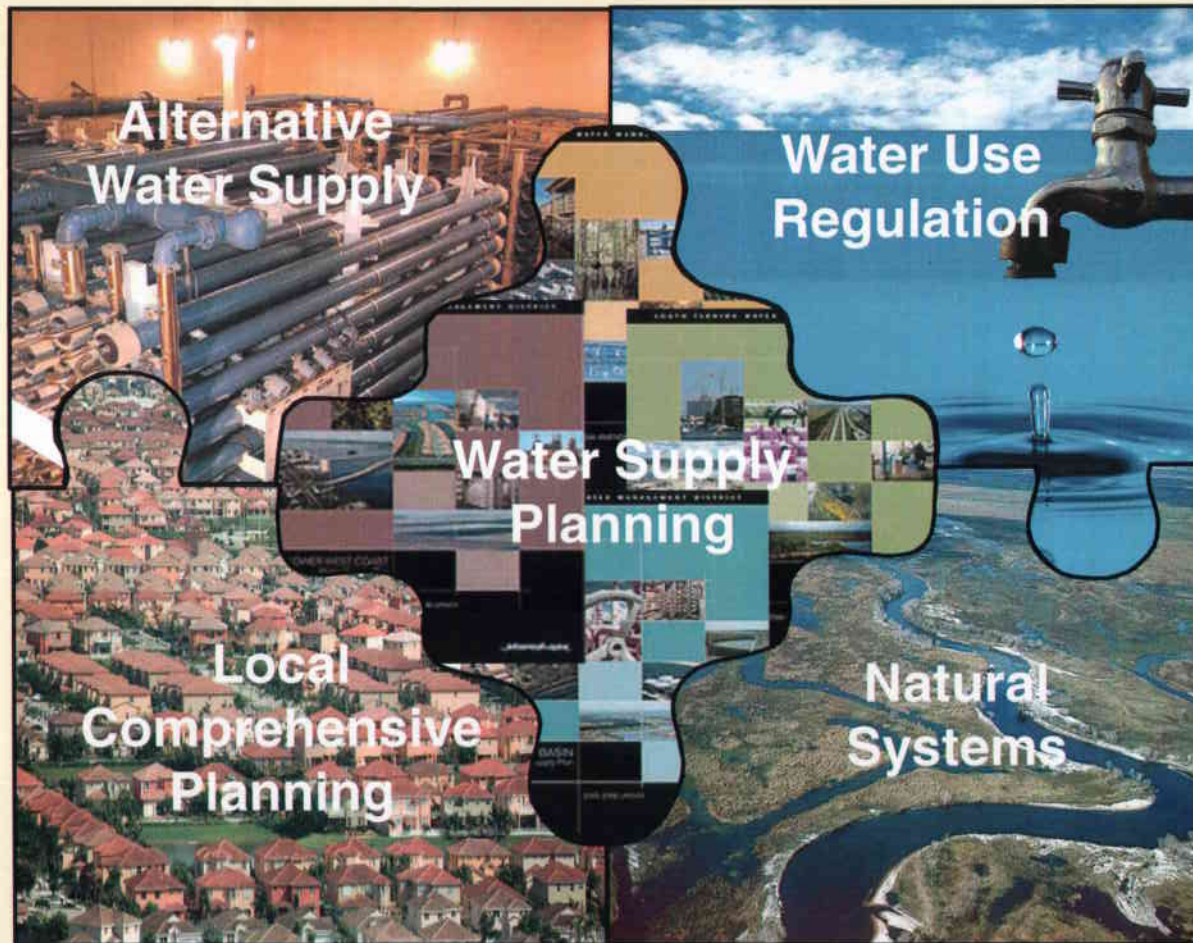


# What is a Water Supply Plan?

- Current and future look at water needs
- Strategies to meet future water demands and the needs of the environment
- Based on at least a 20-year future planning horizon
- Updated every 5 years



# Water Supply Planning Linkages



## Local Government Responsibility



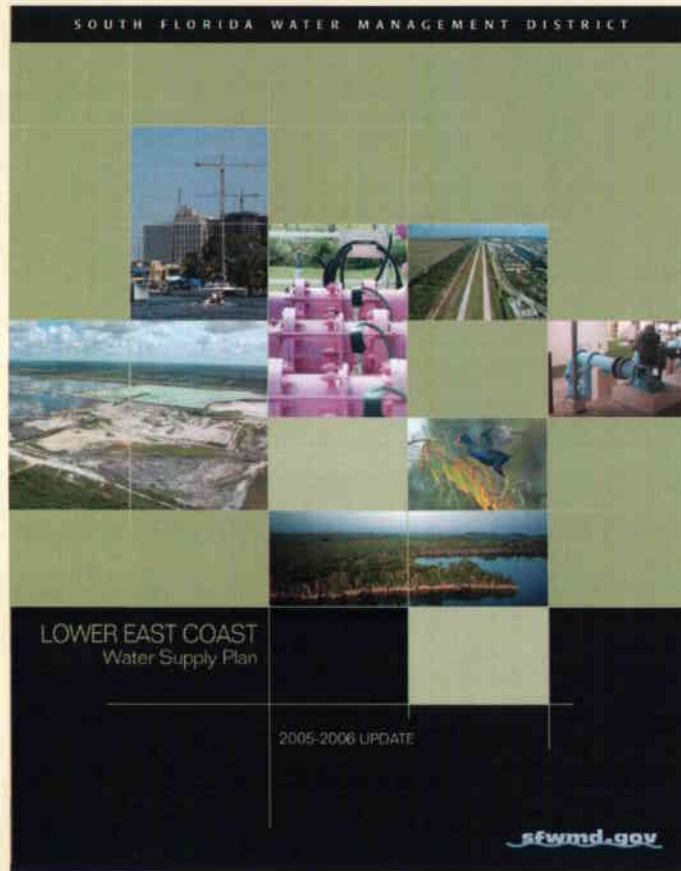
- **Identify how future water supply needs will be met**
  - Water supply can be met with traditional and alternative sources, conservation or reuse
- **Update your 10-year water supply facilities work plan**
- **Revise local comprehensive plan to incorporate the updated 10-year water supply facilities work plan within 18 months of water supply plan approval.**

## Importance for Local Involvement

- **Active participation to ensure plan reflects local needs**
- **Coordination among:**
  - **County Commission/City Council**
  - **Utility staff**
  - **Planning staff**
  - **Other stakeholders**
- **Projects to meet future water demand**



# 2006 Lower East Coast Water Supply Plan



## Plan Conclusion

The water supply plan recognized the LEC Planning Area's need for increased commitment to water conservation and alternative water supply development to meet the projected future needs through 2025.



## Opportunities for Public Participation

- Public meetings through Water Resource Advisory Commission (WRAC) Special Issues workshops
- Updates to full WRAC
- Engagement of local governments
- One-on-one meetings and discussions with stakeholders
- Meetings with regional planning councils
- Stakeholder questionnaire to identify issues upfront
- Web Boards, GoTo Meetings, etc.



# LEC Water Supply Plan Update Process



SOUTH FLORIDA WATER MANAGEMENT DISTRICT

# Questions?

