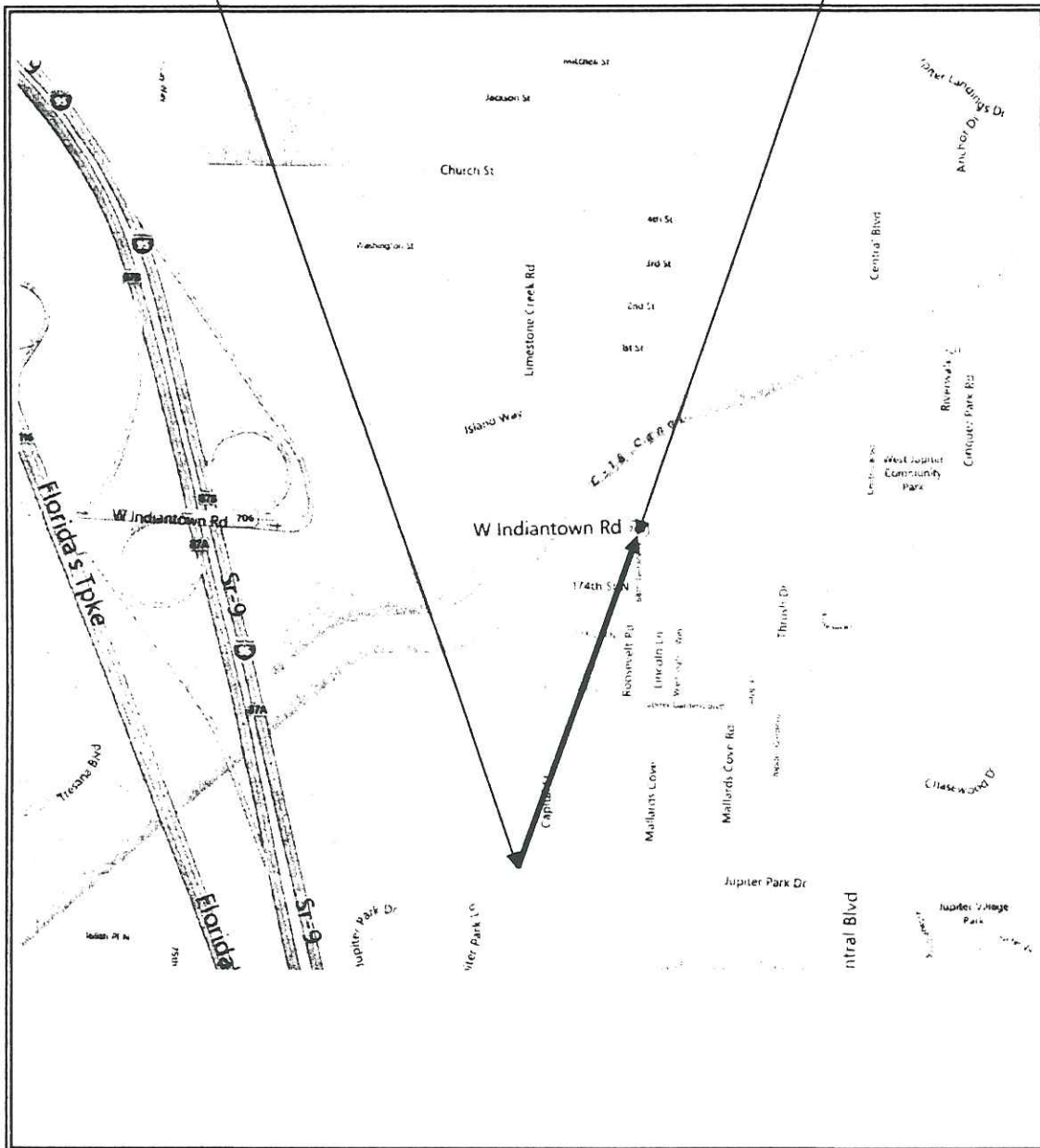




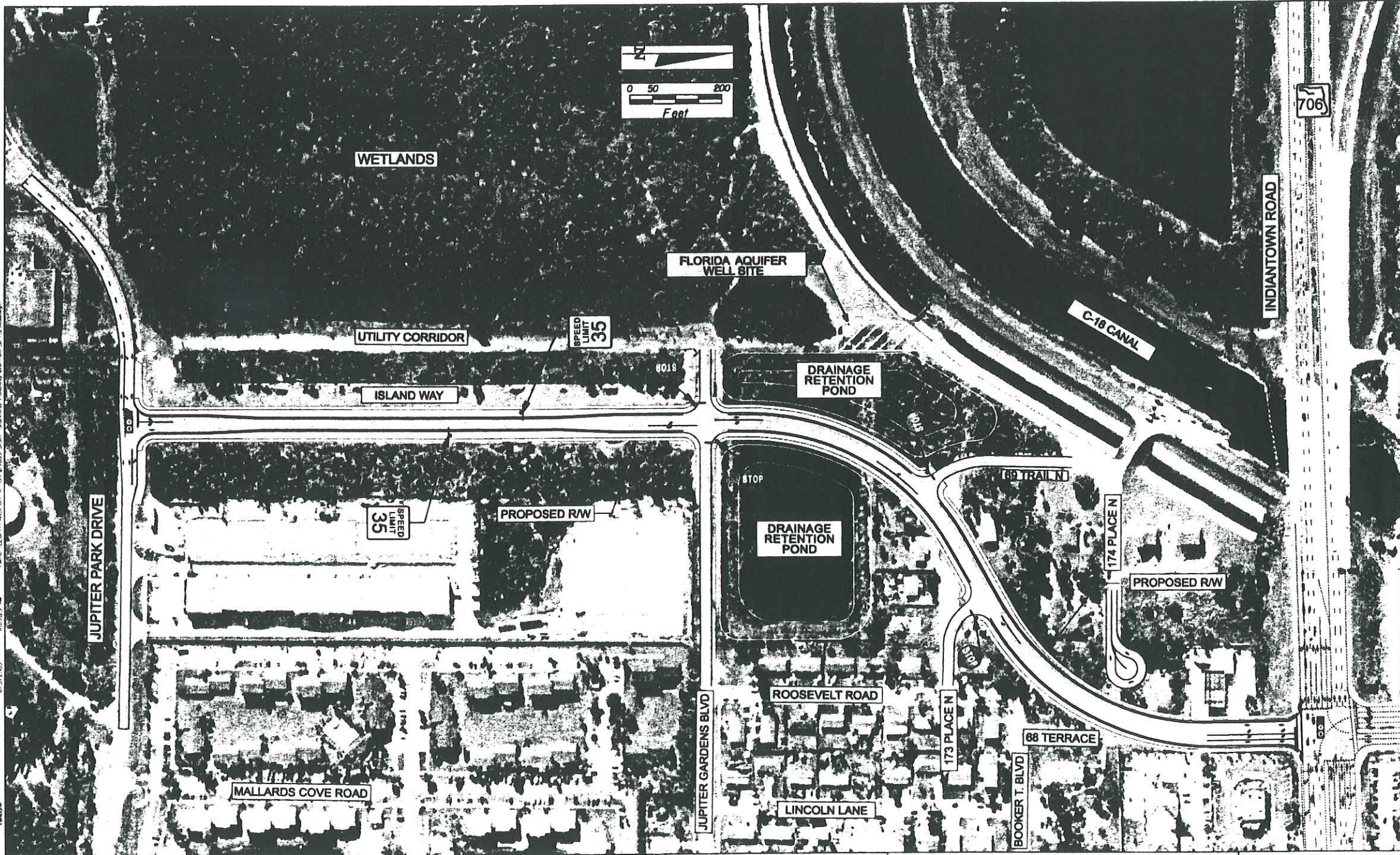


**LOCATION MAP**

**ISLAND WAY – JUPITER PARK DRIVE TO INDIANTOWN ROAD**







8/27/2008  
 8:00:29 AM  
 L:\GIS\LEO\TRANSPORTATION\2006503\MapDocs\Roadway\Roadway\07\_11\_2008.dwg



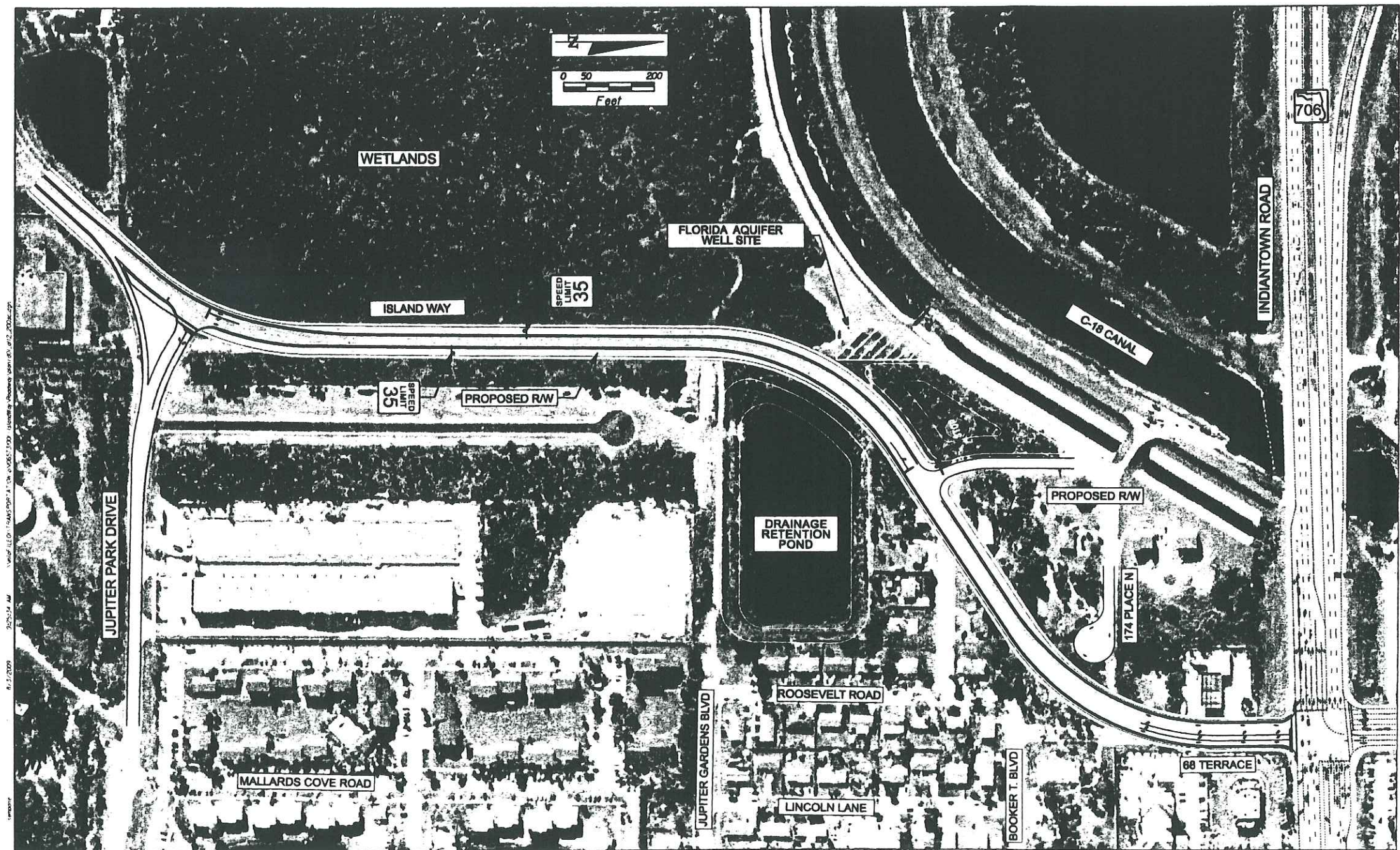
**RS&H**

**WESTERN CORRIDOR / JUPITER PARK DRIVE  
PBC PROJECT No. 2006503**

**ROADWAY ALIGNMENT  
ALTERNATIVE 1**

**FIGURE 10**

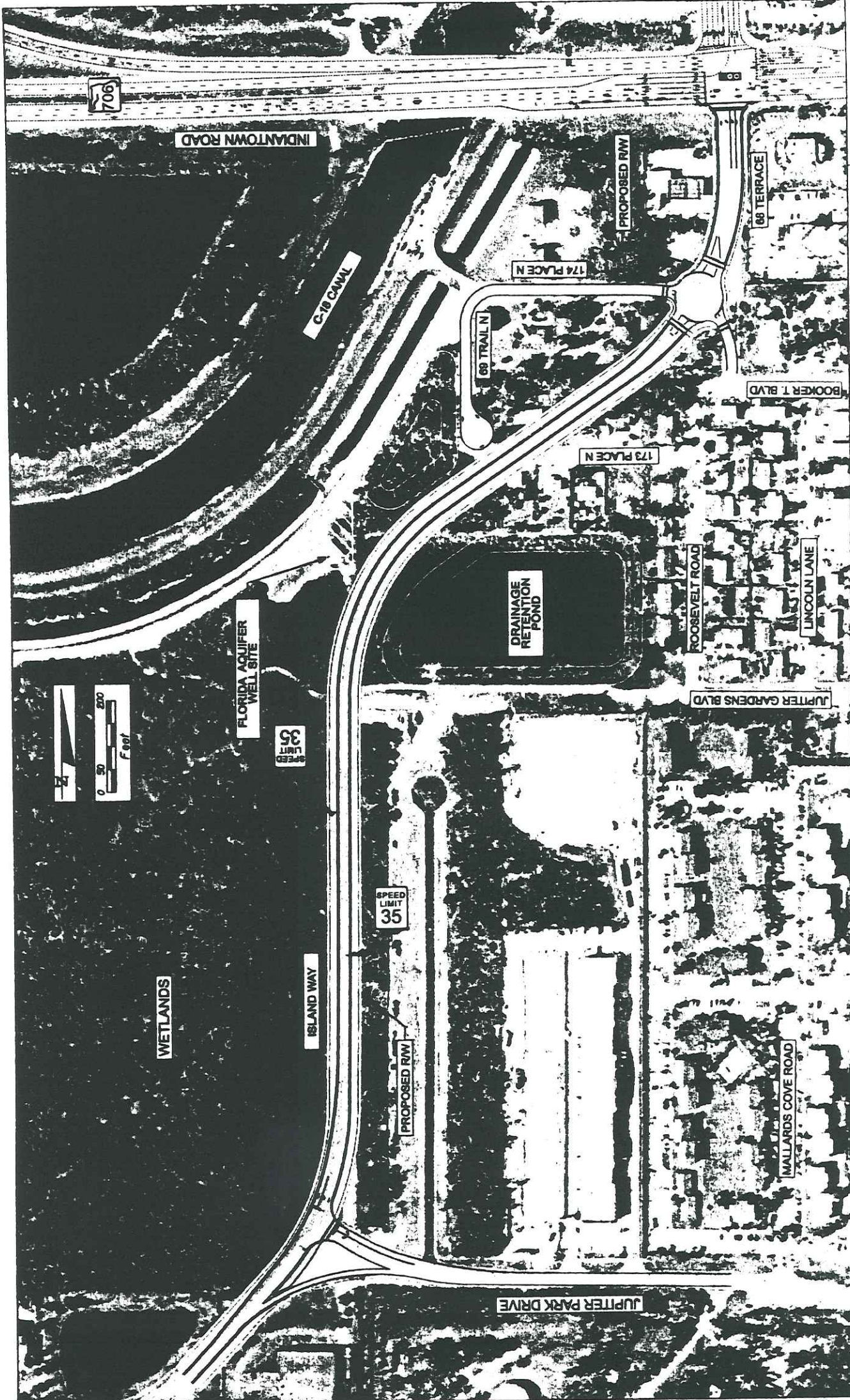




8-17-2009  
 2:25:34 AM  
 \s\p\LED - PLAN\909111 - 01\0651100 - Identifying Roadway Signs.dwg, 2/20/09

	<b>RS&amp;H</b>	<b>WESTERN CORRIDOR / JUPITER PARK DRIVE PBC PROJECT No. 2006503</b>	<b>ROADWAY ALIGNMENT ALTERNATIVE 2</b>	<b>FIGURE 11</b>
--	-----------------	--------------------------------------------------------------------------	--------------------------------------------	------------------





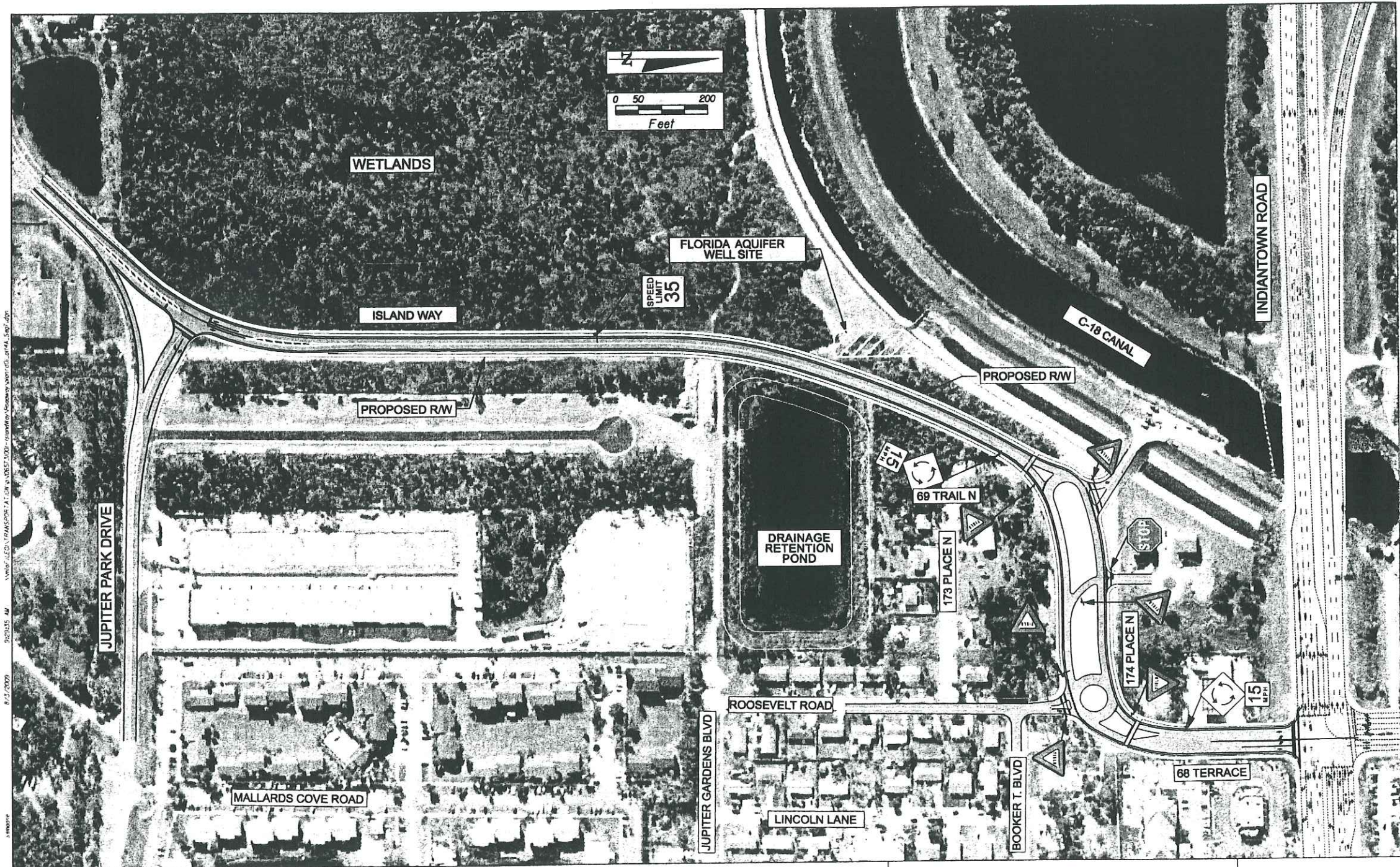
**FIGURE 12**

**ROADWAY ALIGNMENT  
ALTERNATIVE 3**

**WESTERN CORRIDOR / JUPITER PARK DRIVE  
PBC PROJECT No. 2006503**







6/17/2009 9:29:55 AM View: LEDA\_TRANSP-AT\_200650303-ROADWAY\_ALIGNMENT\_4.dwg, 3x7, 3x7.dwg



**RS&H**

**WESTERN CORRIDOR / JUPITER PARK DRIVE  
PBC PROJECT No. 2006503**

**ROADWAY ALIGNMENT  
ALTERNATIVE 4**

**FIGURE 13**



**Table 16  
WESTERN CORRIDOR / JUPITER PARK DRIVE ALIGNMENT STUDY  
SUMMARY EVALUATION MATRIX**

Alternative	Traffic Operations/Safety	ROW Impacts (Number of Parcels)	Relocations	Design Criteria	Utility Impacts	Local Neighborhood Access/Circulation	Environmental Impacts	Costs		ALTERNATIVE RANKING
								Construction	ROW	
NO BUILD	Provides no improvement to traffic operations or safety. Indiantown Road/Central Blvd at LOS F in 2015. Planned development in Jupiter Park of Commerce would increase NB to WB left-turns that experience 4 to 5 min delays. NB to WB left-turns spillover into NB through lanes.	0	0	N/A	None	N/A	Continued degradation of traffic operations would cause air quality impacts from transportation pollutants.	\$0	\$0	5
1	Indiantown Road/Central Blvd at LOS F in 2015. NB to WB left-turns reduced by 40% and eliminates spillover. Reduces traffic on Central Blvd by 14%. Provides additional capacity for traffic circulation in local network. T-Intersection at Jupiter Park Drive provides best traffic operations.	33 (18 parcels along business park access roadway)	5 Residential	Satisfies PBC design criteria	Alignment would require partial fill of existing drainage retention pond. Would require minor relocation of utilities. Traffic signal at Indiantown Road would be modified.	Local access is provided with a stop-controlled intersection at Jupiter Gardens Blvd and T-Intersections at 69th Trail N and 173rd Place N.	The new alignment would reduce vehicle travel miles, fuel consumption and associated transportation pollutants. The project would impact an existing wetland area (drainage retention pond). Each alignment would cause noise impacts to adjacent residential neighborhoods.	\$3,856,218	ROW cost is prohibitive and was not estimated.	4
2	Indiantown Road/Central Blvd at LOS F in 2015. NB to WB left-turns reduced by 40% and eliminates spillover. Reduces traffic on Central Blvd by 14%. Provides additional capacity for traffic circulation in local network.	17	6 Residential	Satisfies PBC design criteria	Alignment would require the most fill of the existing drainage retention pond. Would require major relocation of utilities along the utility easement. Could impact the Florida Aquifer Well Site. Traffic signal at Indiantown Road would be modified.	No Local access will be provided to the area east of Island Way South. Access to the northwest area will be provided through 69 Trail N.	The new alignment would reduce vehicle travel miles, fuel consumption and associated transportation pollutants. This alignment would have the most impact to an existing wetland area (drainage retention pond). The alignment could impact the Florida Aquifer Well Site. This alternative would impact an observed gopher tortoise burrow. Each alignment would cause noise impacts to adjacent residential neighborhoods.	\$4,208,011	\$2,024,606	3
3	Indiantown Road/Central Blvd at LOS F in 2015. NB to WB left-turns reduced by 40% and eliminates spillover. Reduces traffic on Central Blvd by 14%. Provides additional capacity for traffic circulation in local network.	18	5 Residential	Satisfies PBC design criteria	Alignment would require partial fill of the existing drainage retention pond. Would require major relocation of utilities along the utility easement. Traffic signal at Indiantown Road would be modified.	Local access is provided with a roundabout at 174th Place N and 68th Terrace. The roundabout would be designed to accommodate large trucks and emergency vehicles.	The new alignment would reduce vehicle travel miles, fuel consumption and associated transportation pollutants. This alignment would impact an existing wetland area (drainage retention pond). This alternative would impact an observed gopher tortoise burrow. Each alignment would cause noise impacts to adjacent residential neighborhoods.	\$4,180,411	\$2,021,524	2
4	Indiantown Road/Central Blvd at LOS F in 2015. NB to WB left-turns reduced by 40% and eliminates spillover. Reduces traffic on Central Blvd by 14%. Provides additional capacity for traffic circulation in local network.	11	2 Residential	Satisfies PBC design criteria	Alignment would require partial fill of the existing drainage retention pond. Would require major relocation of utilities along the utility easement. Traffic signal at Indiantown Road would be modified.	Local access provided by elongated traffic circle at Roosevelt Road. The traffic circle would be designed to accommodate large trucks and emergency vehicles.	The new alignment would reduce vehicle travel miles, fuel consumption and associated transportation pollutants. This alignment would impact an existing wetland area (drainage retention pond). This alternative would impact an observed gopher tortoise burrow. Each alignment would cause noise impacts to adjacent residential neighborhoods.	\$4,378,530	\$2,074,532	1

Attachment 3





February 16, 2012

**NOTICE OF PUBLIC HEARING FOR THE  
PROPOSED ALIGNMENT OF  
JUPITER PARK DRIVE/WESTERN CORRIDOR (aka ISLAND WAY)  
FROM  
JUPITER PARK DRIVE TO INDIANTOWN ROAD  
PALM BEACH COUNTY, FLORIDA  
PALM BEACH COUNTY PROJECT NUMBER 2006503S**

**Department of Engineering  
and Public Works**  
P.O. Box 21229  
West Palm Beach, FL 33416-1229  
Phone: (561) 684-4000  
FAX: (561) 684-4050  
www.pbc.gov.com

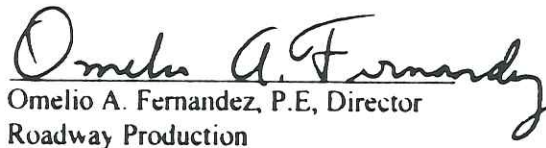
**TO WHOM IT MAY CONCERN:**

The purpose of this letter is to inform you that a Public Hearing on the proposed alignment of Jupiter Park Drive/Western Corridor (aka Island Way) from Jupiter Park Drive to Indiantown Road is scheduled for Tuesday, March 20, 2012, at the Governmental Center in the Jane Thompson Memorial Chambers on the 6<sup>th</sup> floor, 301 North Olive Avenue, West Palm Beach, Florida. The Board of County Commissioners' Meeting Agenda schedules Public Hearings to begin at 9:30 A.M. Actual time of the above Public Hearing is subject to the sequence and time of Public Hearings to be heard that day.

Questions regarding this Public Hearing or the proposed alignment of Jupiter Park Drive/Western Corridor (aka Island Way) from Jupiter Park Drive to Indiantown Road should be asked of:

David Young, P.E.  
Roadway Production Division  
2300 N. Jog Road, 3<sup>rd</sup> Floor West  
West Palm Beach, FL 33411  
Phone: (561) 684-4149  
Fax: (561) 684-4166  
E-mail: DLYOUNG@PBCGOV.ORG

Sincerely,

  
Omelio A. Fernandez, P.E., Director  
Roadway Production

F:\ROADWAY\PUBLIC\_HEARINGS\Property\_Owner\_Notice\2006503S\_Notice.doc

**Palm Beach County  
Board of County  
Commissioners**

Shelley Varma, Chair

Steven J. Abrams, Vice Chairman

Brenda L. Marquis

Genevieve Ruddle

Burt Aaronson

Jess K. Santamaria

Prescilla A. Taylor

**County Administrator**

Robert Weinstan

For more information  
contact the Public Engineer

Printed on recycled paper