

RESOLUTION NO. R-2013-

A RESOLUTION OF THE BOARD OF COUNTY COMMISSIONERS OF PALM BEACH COUNTY, FLORIDA, APPROVING THE PROPOSED 2010 FHWA ADJUSTED URBAN BOUNDARIES FOR PALM BEACH COUNTY.

WHEREAS, the Florida Department of Transportation, District 4 (FDOT D4) initiated the decennial review of the Federal Highway Administration (FHWA) adjusted urban boundaries and Functional Classifications of roads as defined in 23 USC 101(a)(36)-(37) and 49 USC 5302(A)(16)-(17); and

WHEREAS, Palm Beach County has reviewed and concurred with the draft 2010 FHWA Adjusted Urban Boundaries for Palm Beach County; and

WHEREAS, additional coordination on Federal Functional Classification designation for all public roads in Palm Beach County will be continually coordinated and mutually supported by the FDOT D4 and Palm Beach County.

NOW, THEREFORE, BE IT RESOLVED, THAT THE BOARD OF COUNTY COMMISSIONERS OF PALM BEACH COUNTY, FLORIDA THAT:

Palm Beach County (County) concurs with the draft 2010 Federal Highway Administration Adjusted Urban Boundaries for Palm Beach County and authorizes County staff to provide notification to FDOT D4 to forward the proposed boundaries to the FDOT Central Office and FHWA for subsequent review and approval.

The foregoing resolution was offered by Commissioner _____, who moved its adoption. The motion was seconded by Commissioner _____, and upon being put to a vote, the vote was as follows:

Commissioner Steven L. Abrams, Mayor	-	_____
Commissioner Priscilla A. Taylor, Vice-Mayor	-	_____
Commissioner Hal R. Valeche	-	_____
Commissioner Paulette Burdick	-	_____
Commissioner Shelley Vana	-	_____
Commissioner Mary Lou Berger	-	_____
Commissioner Jess R. Santamaria	-	_____

The Mayor thereupon declared the Resolution duly passed and adopted on the _____ day of _____, 2013.

Approved as to Form
And Legal Sufficiency

Palm Beach County, Florida by its
Board of County Commissioners

Sharon R. Bock, Clerk &
Comptroller

By: _____
County Attorney

By: _____
Deputy Clerk



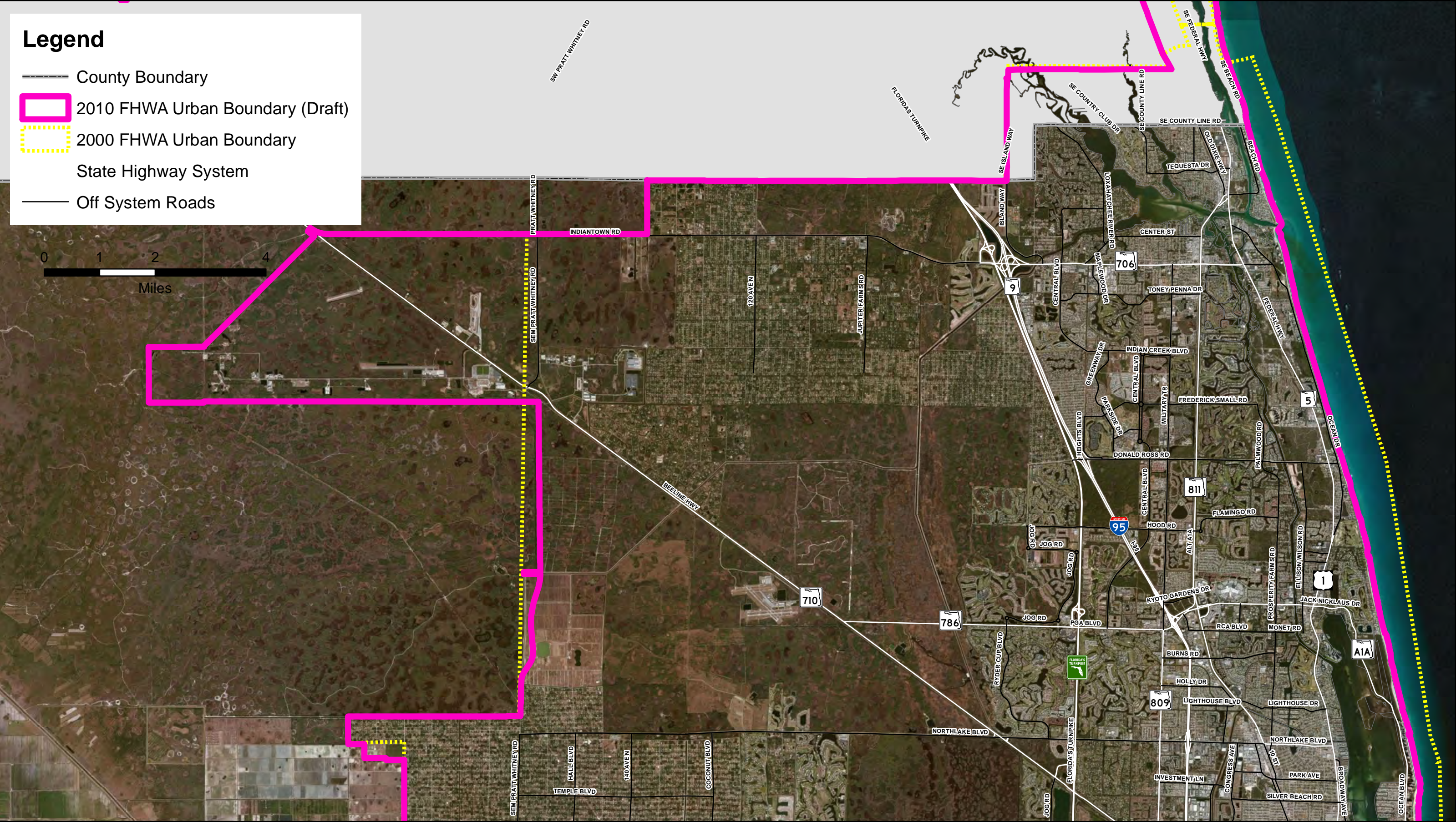
2010 Draft FHWA Adjusted Urban Boundary Palm Beach County (North)

Attachment 2(a)



Legend

- County Boundary
- 2010 FHWA Urban Boundary (Draft)
- 2000 FHWA Urban Boundary
- State Highway System
- Off System Roads










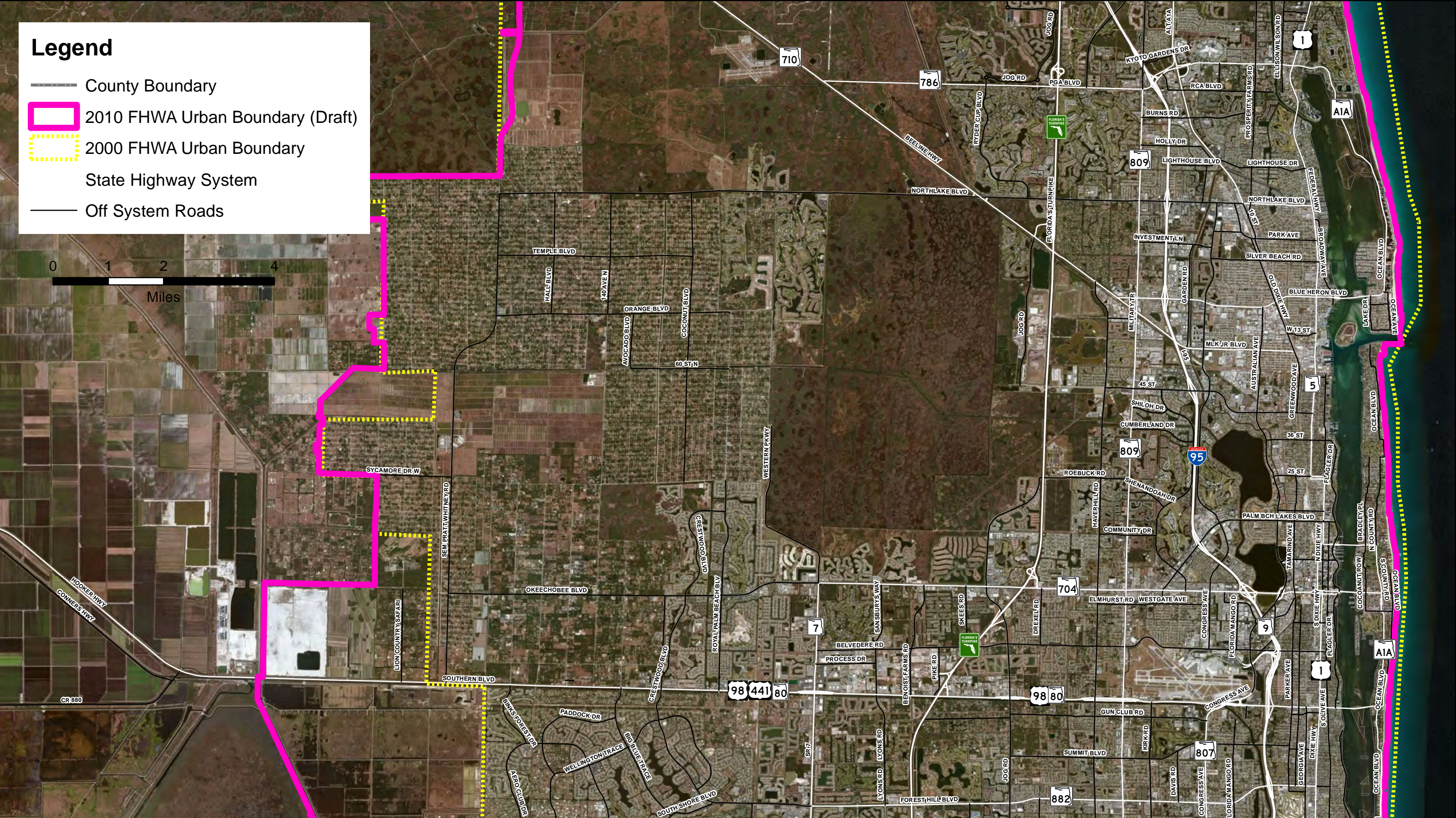
2010 Draft FHWA Adjusted Urban Boundary Palm Beach County (North Central)

Attachment 2(b)



Legend

-  County Boundary
-  2010 FHWA Urban Boundary (Draft)
-  2000 FHWA Urban Boundary
-  State Highway System
-  Off System Roads








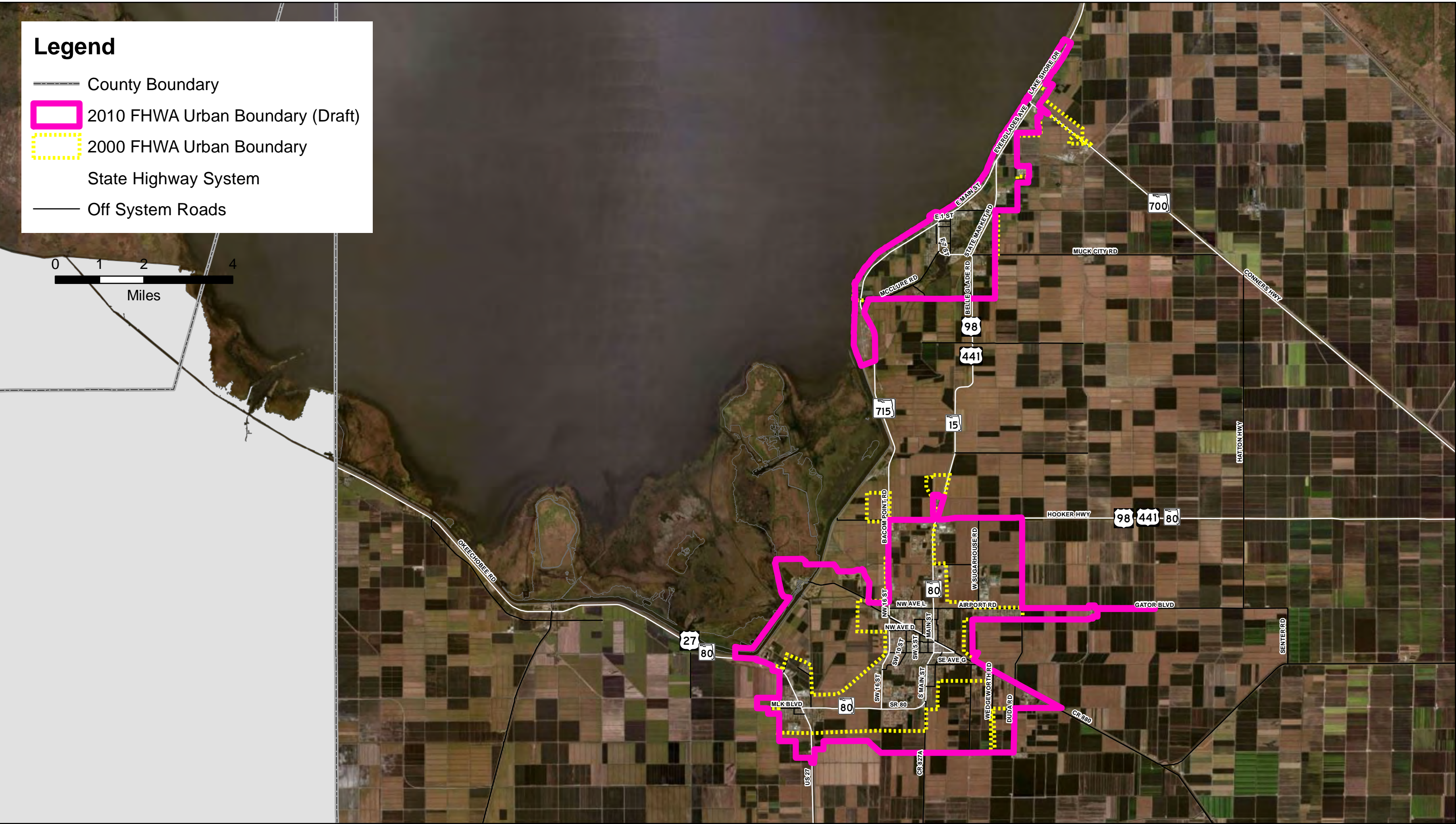
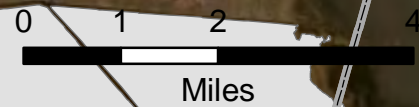


2010 Draft FHWA Adjusted Urban Boundary Palm Beach County (West) Attachment 2(c)



Legend

-  County Boundary
-  2010 FHWA Urban Boundary (Draft)
-  2000 FHWA Urban Boundary
-  State Highway System
-  Off System Roads










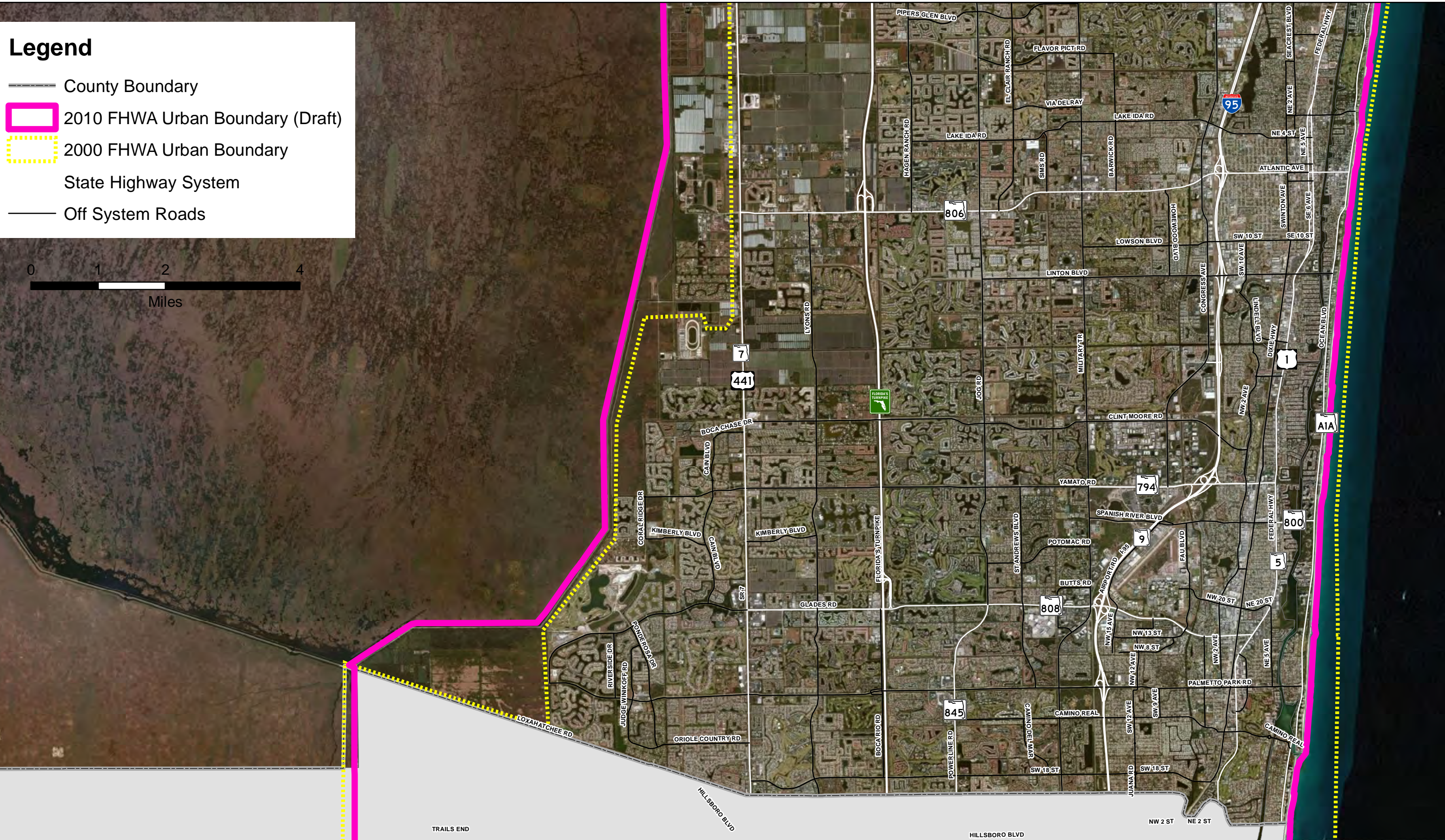
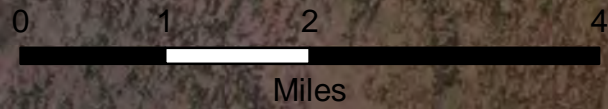
2010 Draft FHWA Adjusted Urban Boundary Palm Beach County (South)

Attachment 2(d)



Legend

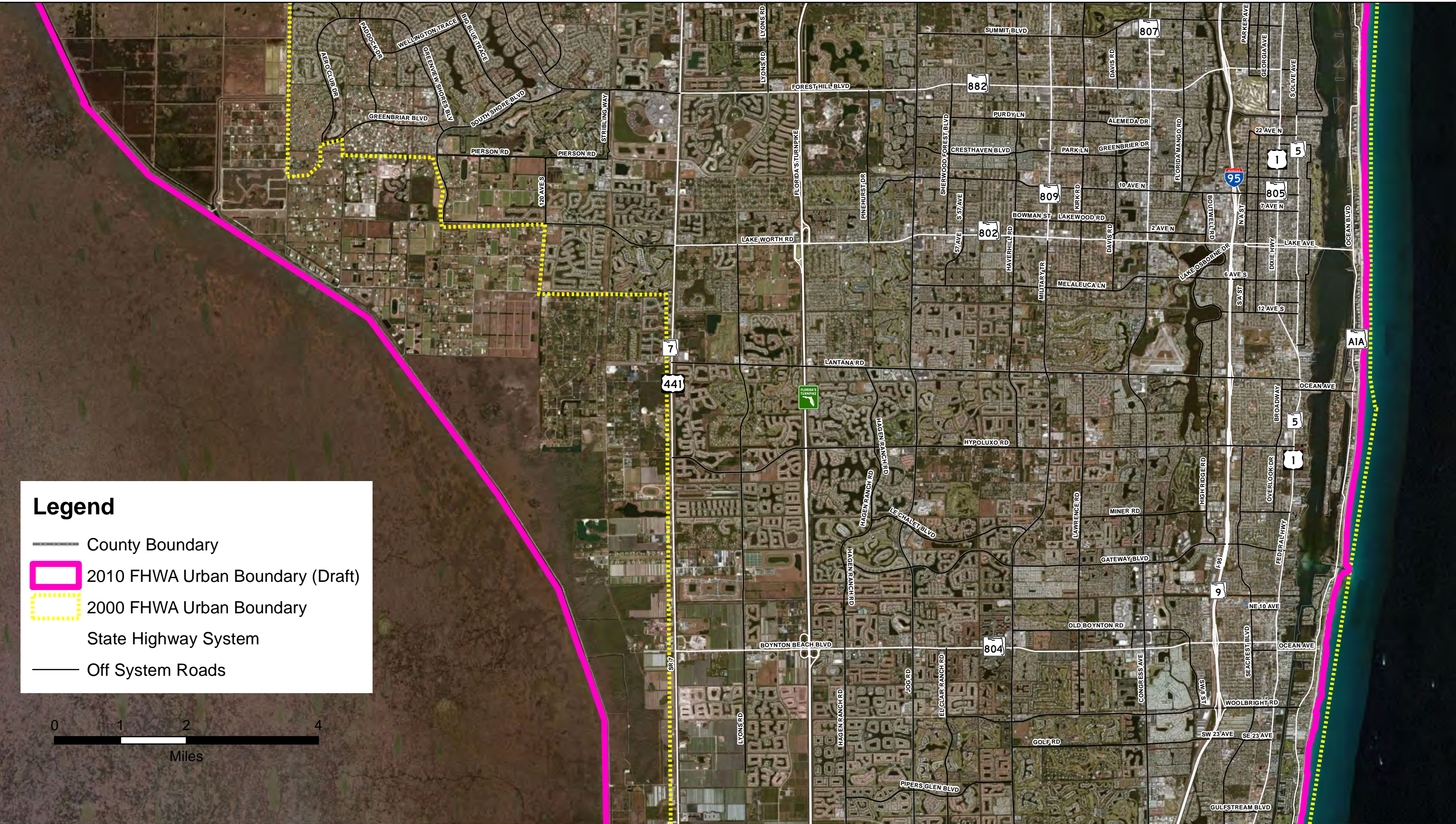
-  County Boundary
-  2010 FHWA Urban Boundary (Draft)
-  2000 FHWA Urban Boundary
-  State Highway System
-  Off System Roads





2010 Draft FHWA Adjusted Urban Boundary Palm Beach County (South Central)

Attachment 2(e)



Legend

- County Boundary
- 2010 FHWA Urban Boundary (Draft)
- 2000 FHWA Urban Boundary
- State Highway System
- Off System Roads

